

General Information

President	Dr. George Mihel
Size of Campus	144 acres
Size of Main Building	449,000 square feet
School Motto	<i>Sauk makes it possible... you make it happen</i>
Mascot	Skyhawk, a mythical bird
School Colors	Red, white, and black
Contact Information	815/288-5511 www.svcc.edu

Programs Available

Total Number of Degrees and Certificates Available	105
Number of Transfer Degrees Available	35
Number of Career Degrees Available	22
Number of Career Certificates Available	48
Number of New Programs Created in Past 5 Years	21

Cost to Attend

In-District Tuition Rate Per Credit Hour	\$85
Out-of-District Tuition Rate Per Credit Hour	\$247
Out-of-State Tuition Rate Per Credit Hour	\$279
Tuition Rate for Internet Based Courses	\$85

Est. Annual Expense for a District Resident to Attend Full-Time	\$2,550
---	---------

Scholarships and Financial Assistance 2006-07

Percent of Students Receiving Scholarships and/or Financial Aid	91
Average Scholarship and Financial Aid Awarded	\$1,814
Total Scholarship and Financial Aid Awarded	\$5,261,288

Sauk Valley Community College is an equal opportunity employer and is committed to an effective policy of non-discrimination and equal opportunity in all employee and student relations. Except to the extent and subject to the exemptions permitted by law, no qualified employee or student shall be excluded from the employment or educational opportunity, be denied benefits, or be subjected to discrimination on the basis of race, color, religion, national origin, ancestry, age, sex, sexual orientation (as that term is defined in the Illinois Human Rights Act), marital status, handicap, military status or unfavorable discharge from military service classified as Re-3 or the equivalent thereof. SVCC/9/08Mm



Student Housing Information

Housing Options	24-2 bedroom/2 bath apartments 23-4 bedroom/2 bath apartments
Amenities	High-speed Internet, water and gas, private bedrooms, full kitchens, laundry facilities, cable television, sports court, clubhouse
Housing Costs	\$379-\$469 per month, per bed
Housing Information	815/835-2000 www.svcc.edu/saukcommons

Enrollment 2006-07

Total Students Enrolled	7,273
Total Credit Students	6,073
Total Non-Credit Students	1,312
Total Credit Hours	52,422
Approximate Fall Enrollment	3,753
Average Student Credit Hour Load	6.8
Student Full Time Equivalent (FTE)	1,704

Student-to-Computer Ratio	15:1
---------------------------	------

Number of Non-Credit Courses	167
------------------------------	-----

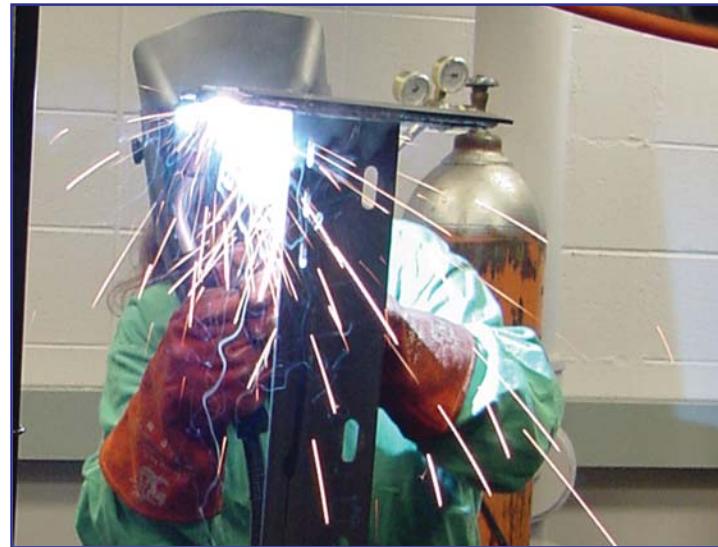
Number of GED Students	222
Number of ESL (English as A Second Language) Students	94
Percent of Female Students	54%
Percent of Students in Transfer Programs	27%
Number of Students in Honors Programs	51
Number of Students in Phi Theta Kappa	95

Percent of Local High School Graduates at SVCC	37%
--	-----

Percent Retention Rate from Fall to Spring	64%
--	-----

Percent of Students Working While Attending	72%
---	-----

Percent of District Population Served by SVCC	7.2%
---	------



Licensing Test Results

Percent Passing Illinois Nursing (LPN) Licensing Test on First Attempt	93%
Percent Passing Illinois Nursing (RN) Licensing Test on First Attempt	87%
Percent Passing American Registry of Radiologic Technologist Exam on First Attempt	100%

Intercollegiate Accomplishments:

Number of Intercollegiate Athletic Teams	10
Number of Academic All-Americans	30
Number of All-Americans	16
Number of Team National Qualifiers	12
Number of Individual National Qualifiers	38
Number of Team Regional Championships	13
Number of Team Conference Championships	14
Number of Team Sectional and District Championships	6

Board of Trustees

Chair	Robert Thompson, Attorney
Vice Chair	Ed Andersen, Hospital CEO
Secretary	*Nancy Varga, Business Owner
Member	*Andrew Bollman, Attorney
Member	*Ed Cox, Realtor
Member	Joan Padilla, Dental Hygienist
Member	Dr. William Simpson, Dentist
Student Trustee	Jessie Huseman
Meeting Date	Fourth Monday of Each Month
Meeting Time, Place	7:00 p.m., College Board Room
	*Indicates Sauk Alum

Historical Information

Year Founded	1965
Total Degrees and Certificates Awarded 1965-2007	16,262



Institutional Information

Number of Administrators	16
Number of Full-Time Faculty	46
Number of Full-Time Faculty With Doctorates	5
Number of Part-Time Faculty	89
Total Full- and Part-Time Faculty	135
Number of Professional/Technical	45
Number of Support Staff	54
Full-Time Employees who are SVCC Alum or have completed 15 Hours or more credits (48%)	77

Total Number of Full Time Employees	161
Total Number of Employees (Full- and Part-time)	250

Annual Operating Budget	\$12,624,503
Percent Revenue from Tuition and Fees	36%
Percent Revenue from Property Taxes	31%
Percent Revenue from State Funding	27%
Percent from Other Sources	6%

Recognized by Illinois Community College Board

Accredited by Higher Learning Commission, North Central Association
30 N. LaSalle St., Suite 2400, Chicago, IL 60602-2504

Accredited by the Joint Review Committee on Education in Radiologic Technology (JRCERT)

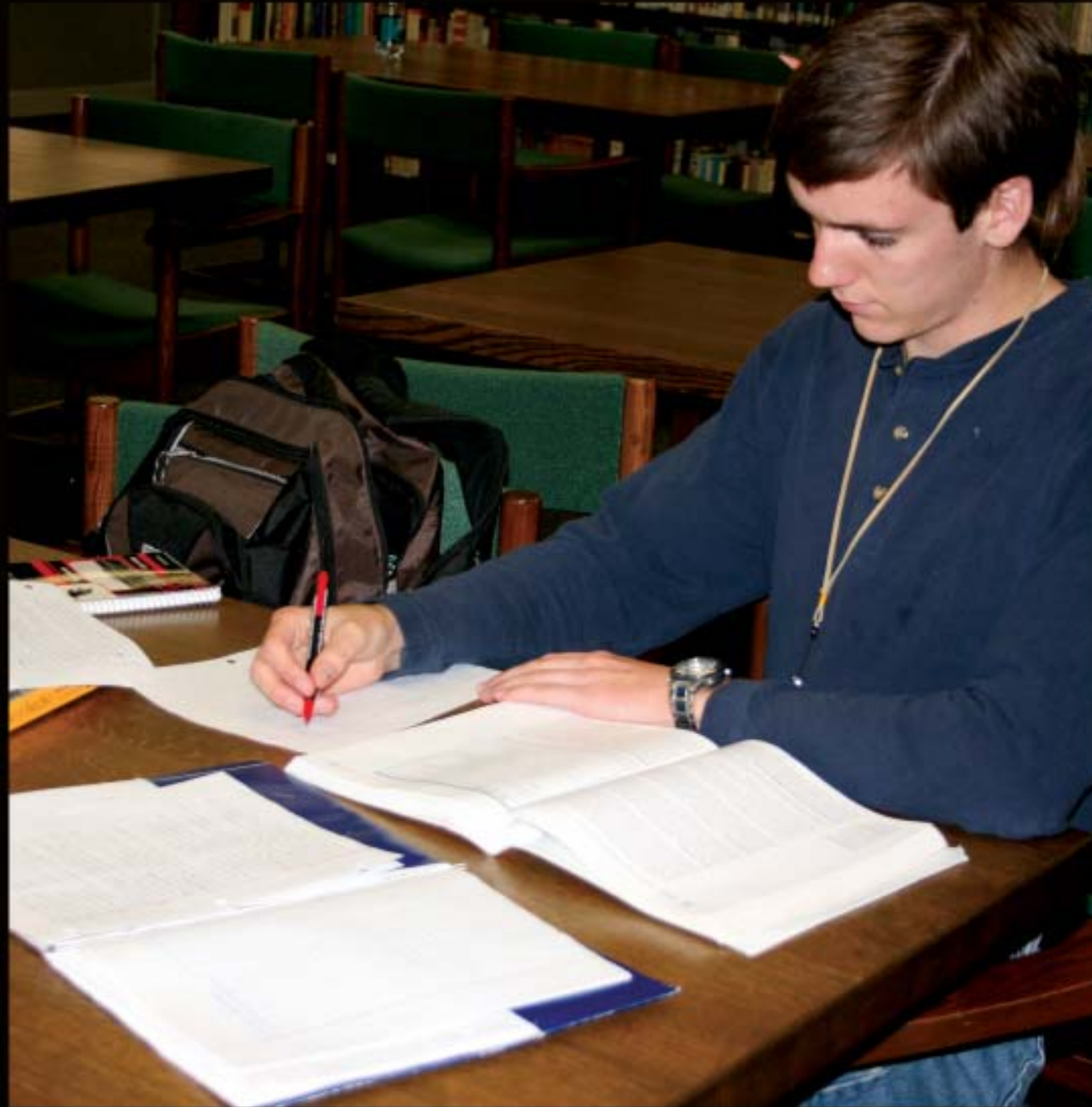
District Information

District Size (square miles)	1,625
District Population	103,079
Number of High Schools Served	18



*Sauk Makes It Possible . . .
You Make It Happen!*

**than
meets
the eye!**



**There's
more
to**

