

## Who Can Be President

- Constitutional Requirements
  - 35 years of age
  - Native-born citizen
  - U.S. resident for 14 years
- Intangibles
  - Ability to win party nomination
  - High office holder
  - Prominent family

---

---

---

---

---

---

---

## Presidency & the Constitution

- Article II
  - Limited to 2 four year terms
    - 22<sup>nd</sup> Amendment
- Vagueness of the Constitution

---

---

---

---

---

---

---

## Presidential Power

- Executive Power
  - Make policy & command subordinates
- Running the Government
- Commander in Chief
- Diplomatic Powers
- Economic Management

---

---

---

---

---

---

---

## Nineteenth Century Presidency

- Dominated by Congress
- Washington
  - Gave Presidency Legitimacy
- Jackson
  - First President to expand the powers of the Presidency
- Lincoln
  - Set the foundations for the modern Presidency

---

---

---

---

---

---

---

---

## Modern Presidency, Origins What Caused This?

- Depression
  - New Deal legislation
- National Security
  - Cold War
- Began with FDR

---

---

---

---

---

---

---

---

## The Institutional Presidency

- Executive Office of the President (EOP)
- White House Staff
  - Chief of Staff
- Cabinet

---

---

---

---

---

---

---

---

## Executive Office of the Presidency

- Created by FDR in 1939
- Gave President large research ability; no longer necessary to depend on outside help
- Key agencies
  - Office of Management and Budget (OMB)
  - National Security Council (NSC)
  - Council of Economic Advisors (CEA)

---

---

---

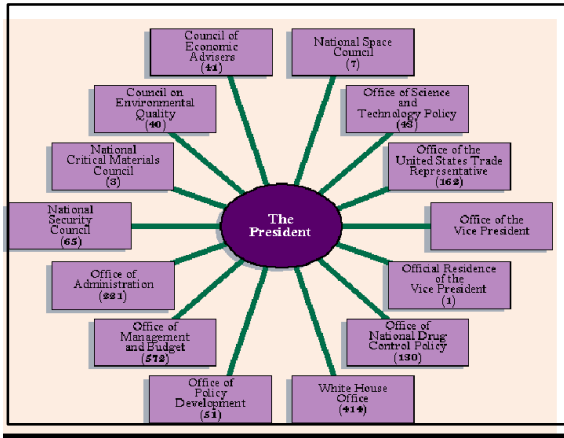
---

---

---

---

---



---

---

---

---

---

---

---

---

## White House Staff

- Advisors to the President and their assistants
- Grown incredibly since FDR
- Presidents appoint people close to them
- President depends on them heavily for advice
- Chief of Staff

---

---

---

---

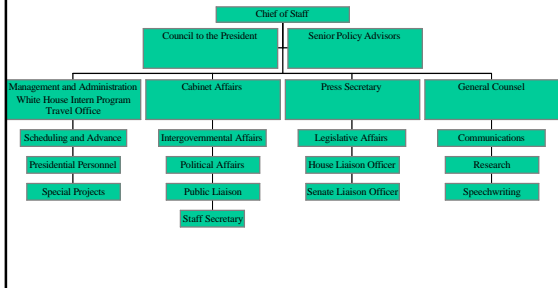
---

---

---

---

## White House Staff Organization



---

---

---

---

---

---

---

---

## Chief of Staff Functions

- Impose Order
- Arbitrate Disputes
- Control Access

---

---

---

---

---

---

---

---

## Cabinet

- Secretaries of major administrative departments (State, Defense)
- Not a formal governing body
  - Rarely consulted in a collective fashion
- Why?
  - Lack of access to the President
  - No personal relationship with President
  - Internal/External Pressures

---

---

---

---

---

---

---

---

## Electoral College

- The assembly that formally elects the President and Vice President
- Our votes simply elect the electors that vote for the President
- Number of electoral votes
  - 538 Total
  - 270 Needed to get elected

---

---

---

---

---

---

---

---

## Electoral College (continued)

- Electoral votes broken down by state
- Number of state electoral votes is equal to the state's number of House Representatives and Senators
- Washington, DC
  - 3 Votes

---

---

---

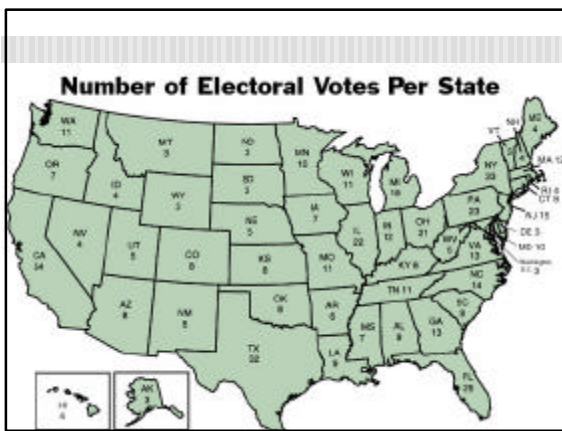
---

---

---

---

---



---

---

---

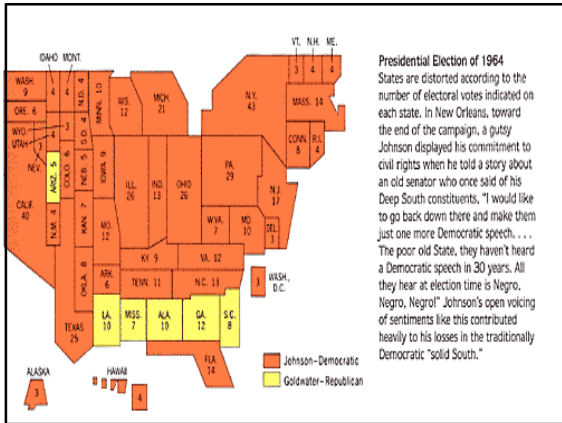
---

---

---

---

---




---

---

---

---

---

---

---

---

## Electors

- How selected?
  - Varies with each state
  - Usually selected by state parties or committees
- Who are they?
  - Party loyalists
  - Party leaders
  - Friends of the candidate

---

---

---

---

---

---

---

---

## Contingency Election (President)

- If one candidate does not win 270 votes, it goes to the House of Representatives
- Top three electoral vote receivers
- Each state has one vote
- Need a majority of states to elect the President

---

---

---

---

---

---

---

---

**Contingency Election  
(Vice-President)**

- Goes to the Senate
- Top two electoral vote getters
- Members vote as individuals rather than states.

---

---

---

---

---

---

---

**Why Founders Created  
Electoral College**

- Feared popular vote
- Compromise between large and small states

---

---

---

---

---

---

---

**Electoral College Critics**

- Faithless Elector
  - Electors may change their votes
- Winner take all system
  - Gives big states an advantage
  - Encourages fraud
  - Enhances power of third party candidates

---

---

---

---

---

---

---

## Electoral College Critics (continued)

- The “Constant Two” Electoral Votes
  - Gives small states more power relative to their population
- Uncertainty of the Winner Winning
  - Winner of the popular vote does not equal winner of the electoral vote
- Contingency Election Procedures
  - Deadlock in the House
  - Increased power of third parties

---

---

---

---

---

---

---

---

## Virtues of the Electoral College

- Virtues of the Electoral College
  - It is a Proven System
  - Makes Campaigns More Manageable
  - Discourages Election Fraud
  - Preserves Moderate Two-Party System

---

---

---

---

---

---

---

---

## Presidential Succession and Disability

- 25<sup>th</sup> Amendment
- Death, resignation
  - Vice-President takes over
- Disability
  - President signs away authority to VP
  - If VP and majority of cabinet find President unfit – can take power

---

---

---

---

---

---

---

---

## Vice-Presidential Succession and Disability

- 25<sup>th</sup> Amendment
  - President nominates new candidate
  - Confirmed by majority of both houses

---

---

---

---

---

---

---

## Impeachment

- House charges the President with the crime
  - "Treason, bribery, or other high crimes and misdemeanors"
- Senate tries the President
  - Chief Justice of the Supreme Court presides
- Senate votes to convict
  - Two-thirds vote necessary

---

---

---

---

---

---

---

## Presidential Character Barber's Theory

- Political and Presidential character is determined by an individual's childhood
- An individual with high self-esteem enters politics for the enjoyment and challenge
- An individual with low self-esteem enters politics for self-gratification

---

---

---

---

---

---

---

## Why individuals with low self-esteem enter politics

- Seek Affection
  - They have a need to be liked by everyone. Compensates for alienation as a child.
- Sense of Duty, Usefulness
  - It is their obligation to help others
- Domination
  - The need to dominate others to compensate for self inadequacies

---

---

---

---

---

---

---

---

## Barber's Theory of Presidential Character

		Role Conception	
		Active	Passive
Personality	Positive	<b>Active Positive</b>	<b>Passive Positive</b>
	Negative	<b>Active Negative</b>	<b>Passive Negative</b>

---

---

---

---

---

---

---

---

## Barber's Types of Presidential Character

- **Active-Positive**
  - High self-esteem. Make the best Presidents
- **Passive-Positive**
  - Affection Seekers. Do not work hard but enjoy the job
- **Passive-Negative**
  - Sense of Duty. Do not work hard and do not enjoy the job

---

---

---

---

---

---

---

---

## Barber's Types of Presidential Character

- **Active-Negative**

- Domination (power seekers). Work hard but do not enjoy the job
- These are the most dangerous Presidents

---

---

---

---

---

---

---

---

	Positive	Negative
Active	Thomas Jefferson FDR Harry Truman JFK Gerald Ford Jimmy Carter George Bush Bill Clinton	John Adams Woodrow Wilson Herbert Hoover Lyndon Johnson Richard Nixon
Passive	James Madison William Taft Warren Harding Ronald Reagan	George Washington Calvin Coolidge Dwight Eisenhower

---

---

---

---

---

---

---

---