

SAUK VALLEY COLLEGE BOARD OF TRUSTEES MEETING
Third Floor Conference Room, 3L14
December 19, 1978 7:30 p.m.

- A. Call to Order
- B. Roll Call
- C. Written Communications from Visitors
- D. Recommended Actions:
 - 1) Approval of minutes as submitted
 - 2) Approval of Treasurer's report
 - 3) Approval of current bills for payment
 - 4) Approval of current payroll journal
 - 5) Personnel items:
 - a) A.V. clerk replacement
 - b) Resignation
 - c) Re-organization of Data Processing and Registrar's office recommendations
 - 6. Other items
- E. Old Business:
 - 1) Agreement with Ottawa Hospital
 - 2) Board Policy manual
 - 3) Cooperative agreement with Special Ed
 - 4) Other items
- F. New Business:
 - 1) "Gallery 506" insurance
 - 2) Other items
- G. President's Report:
 - 1) Student Trustee report
 - 2) Committee meeting minutes
 - 3) Maintenance of college vehicles
 - 4) Down period information
 - 5) Reply from ISSC
 - 6) Sterling United Way report
 - 7) Trustee elections in April
 - 8) Letter of appreciation

MINUTES OF THE SAUK VALLEY COLLEGE BOARD ADJOURNED MEETING

December 9, 1978

The Board of Trustees of Sauk Valley College met in adjourned meeting at 7:30 p.m. on December 19, 1978 in the Board Room of Sauk Valley College, Rural Route #1, Dixon, Illinois.

Call to Order: Chairman Reigle called the meeting to order at 7:30 p.m. and the following members answered roll call:

Kay Fisher	Lorna Keefer
Oscar Koenig	Juanita Prescott
William Reigle	

Absent: Ronald Coplan Ann Powers
Molly Bulfer

Minutes: It was moved by Member Keefer and seconded by Member Koenig that the Board approve the minutes of the November 27 meeting as presented. Motion voted and carried.

Treasurer's Report: It was moved by Member Koenig and seconded by Member Fisher that the Board approve the Treasurer's Report as presented. Motion voted and carried.

Bills Payable: It was moved by Member Prescott and seconded by Member Keefer that the Board approve the bills in the following amounts:

Educational Fund	\$134,217.36
Building Fund	8,751.45
Site & Construction	20,948.00
Bond and Interest	268,463.12

In a roll call vote, all voted aye. Motion carried.

Payroll: It was moved by Member Keefer and seconded by Member Koenig that the Board approve the November 30 payroll in the amount of \$96,368.61. In a roll call vote, all voted aye. Motion carried.

Vacancy: It was moved by Member Prescott and seconded by Member Fisher that the Board approve hiring a replacement for the secretary-technician vacancy in the Learning Resource Center. In a roll call vote, all voted aye. Motion carried.

- Resignation:** It was moved by Member Koenig and seconded by Member Prescott that the Board accept with regret the resignation of Thomas Setchell of the Business Department as of December 31, 1978. Motion voted and carried.
- Arrival:** Member Ann Powers arrived at 7:45 p.m.
- Data Processing and Registrar Re-organization:** It was moved by Member Prescott and seconded by Member Keefer that the following changes be approved in the re-organization of the Data Processing and Registrar's Office:
- Change the title of Director of Data Processing to the Director of Informational Systems, effective as of February 1, 1979.
- Promote Alan Pfeifer to Associate Director of Informational Systems and of the Office of Admissions and Records at a salary of \$17,500 to be effective as of February 1, 1979.
- Eliminate the position of Assistant to the Director of Data Processing effective July 1, 1979.
- Eliminate the position of Programmer/Analyst, effective as of February 1, 1979.
- In a roll call vote the following was recorded: Ayes Members Fisher, Keefer, Koenig, Powers, Prescott and Reigle. Nays-0. Motion carried.
- Budget Transfer:** It was moved by Member Keefer and seconded by Member Prescott that the Board approve the transfer of \$1,750 from the contingency fund to the data processing services salary budget. In a roll call vote, all voted aye. Motion carried.
- Donation:** It was moved by Member Koenig and seconded by Member Fisher that the Board approve a donation from Raynor Mfg. Co. of Dixon, for six boxes of computer forms and journals to be used in the computer instructional program at the college. Motion voted and carried.

Cooperative Agreement: It was moved by Member Keefer and seconded by Member Koenig that the Board approve the attached cooperative agreement with the Community Hospital of Ottawa. Motion voted and carried.

Board Policy Manual: Discussion was held on the revisions to the Board policy manual. The Board went over each policy presented and made suggestions for changes.

Arrival: Member Ron Coplan arrived at 8:55 p.m.

Educational Agreement: It was moved by Member Coplan and seconded by Member Prescott that the Board approve the attached agreement between Sauk Valley College and the Lee County Special Education Association. In a roll call vote, all voted aye. Motion carried.

Status of Negotiations: Member Coplan reported that negotiations were at an impasse and that the faculty association and the board negotiators would make a joint request for a mediator. He noted that the problem was not one of "due process", but a matter of who was going to decide on retrenchment, the faculty association or the board of trustees.

Gallery 506: It was moved by Member Coplan and seconded by Member Powers that Robert Matter be designated Director of Gallery 506 and be assigned the responsibility of selecting art work to be exhibited, to schedule exhibitions, and to assume general supervisory responsibility for the facility. Motion voted and carried.

It was moved by Member Powers and seconded by Member Fisher that the Board approve a budget transfer of \$100 from the contingency fund to the humanities art contractual account for the purpose of paying the insurance on Gallery 506. Motion voted and carried.

President's Report: President Cole noted that Molly Bulfer had resigned as student trustee and that an election would be held in January to replace Molly. Dr. Cole also reported on the committee meeting minutes, maintenance of college vehicles, down period information, reply from the ISSC, report on the Sterling United Way drive.

President's Report (continued): trustee elections in April, and a letter from the Green Hill Girl Scouts on James Barber.

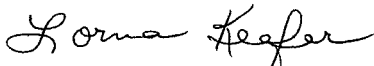
Executive Session: At 9:30 p.m. it was moved by Member Prescott and seconded by Member Keefer that the Board adjourn to executive session to discuss collective bargaining and grievances. Motion voted and carried.

Regular Session: At 9:46 p.m. it was moved by Member Prescott and seconded by Member Powers that the Board return to regular session. Motion voted and carried.

Adjournment: Since there was no further business, it was moved by Member Koenig and seconded by Member Fisher that the Board adjourn. The next regular meeting will be at 7:30 p.m. on January 8, 1979. Motion voted and carried.

The Board adjourned at 9:47 p.m.

Respectfully submitted:



Lorna Keefer, Secretary

SAUK VALLEY COLLEGE

RURAL ROUTE ONE,

DIXON, ILLINOIS 61021

DATE December 19, 1978

MEMORANDUM

TO: Sauk Valley College Board of Trustees

FROM: Dr. George E. Cole

Re: Reorganization of the Data Processing Center and Registrar's Office

The proposal to reorganize the Data Processing and Registrar's Office was discussed in great detail on Monday, December 18 in Administrative Council.

The attached proposal is intended to replace the one sent earlier in the Board packet. There are two changes in the revised version in that Alan Pfeifer's title would be changed to encompass the Admissions and Registrar's area which in the opinion of the Student Services staff would facilitate better communications with students. Also, to stay within the limitations of the existing budget, it was felt that the only salary increase to be effective before July 1 would be the one for Alan Pfeifer and this would be effective as of February 1 to correspond with Mrs. Hastings' retirement. This would mean that the proposal would stay within the confines of the amount of money budgeted for the 1978-79 year with the exception of the amount of \$1,750 which should be transferred from the contingency fund to the data processing services salaries professional budget 195-000-512.

RECOMMENDATION #1: Change the title of Director of Data Processing to the Director of Informational Systems, effective February 1, 1979.

RECOMMENDATION #2: Promote Alan Pfeifer to Associate Director of Informational Systems and of the Office of Admissions and Records, at a salary of \$17,500 to be effective as of February 1, 1979.

RECOMMENDATION #3: Eliminate the position of Assistant to the Director of Data Processing, effective July 1, 1979.

RECOMMENDATION #4: Eliminate the position of Programmer/Analyst, effective as of February 1, 1979.

RECOMMENDATION #5: Eliminate the position of Secretary to the Director of Data Processing, effective July 1, 1979.

RECOMMENDATION #6: Create the clerical position of Technical Assistant in Charge of Operations at the Grade 5 level effective July 1, 1979. This position would be filled by Anita Van Dusen, presently Secretary in Data Processing.

SAUK VALLEY COLLEGE

RURAL ROUTE ONE,

DIXON, ILLINOIS 61021

DATE December 19, 1978

Page #2

MEMORANDUM to SVC Board

TO:

FROM:

RECOMMENDATION #7: Create a position of Management Information Systems Technician at the Grade 3 level, and promote Shirley Sword to this position, effective July 1, 1979.

RECOMMENDATION #8: Fill the position of General Clerical, Grade 1, that will be vacant after the promotion of Shirley Sword, effective July 1, 1979.

mv

SAUK VALLEY COLLEGE

RURAL ROUTE ONE,

DIXON, ILLINOIS 61021

DATE December 18, 1978

MEMORANDUM

TO: Dr. Cole

FROM: Walter Clevenger

RE: Reorganization of the Data Processing Center

In order to facilitate a smooth merger between the Data Processing Center and the Registrar's Office, I recommend the following changes to the Administrative structure:

1. Change the title of Director of Data Processing to the Director of Informational Systems, effective February 1, 1979.
2. Promote Alan Pfeifer to Associate Director of Informational Systems and of the Office of Admissions and Records, within a salary range of \$17,000 and \$18,000, effective February 1, 1979. (See attached list of responsibilities.)
3. Eliminate the position of the Assistant to the Director of Data Processing, effective July 1, 1979.
4. Eliminate the position of Programmer/Analyst, effective February 1, 1979.
5. Eliminate the position of Secretary to the Director of Data Processing, effective July 1, 1979.
6. Create the clerical position of Technical Assistant in Charge of Operations at the Grade 5 level, effective July 1, 1979. This position would be filled by Anita Van Dusen, presently Secretary to the Director of Data Processing.
7. Create a position of Management Information Systems Technician at the Grade 3 level, and promote Shirley Sword to this position, effective July 1, 1979.
8. Fill the position of General Clerical, Grade 1, that will be vacant after the promotion of Shirley Sword, effective July 1, 1979.

Reductions

Registrar's salary	
Pro rated 7 month to 12 months	\$17,400
Asst. to the Dir. of Data Processing (11 month contract) (3/5 instruction)	16,316
Secretary to the Dir. of Data Processing	7,313
Programmer/Analyst	13,300

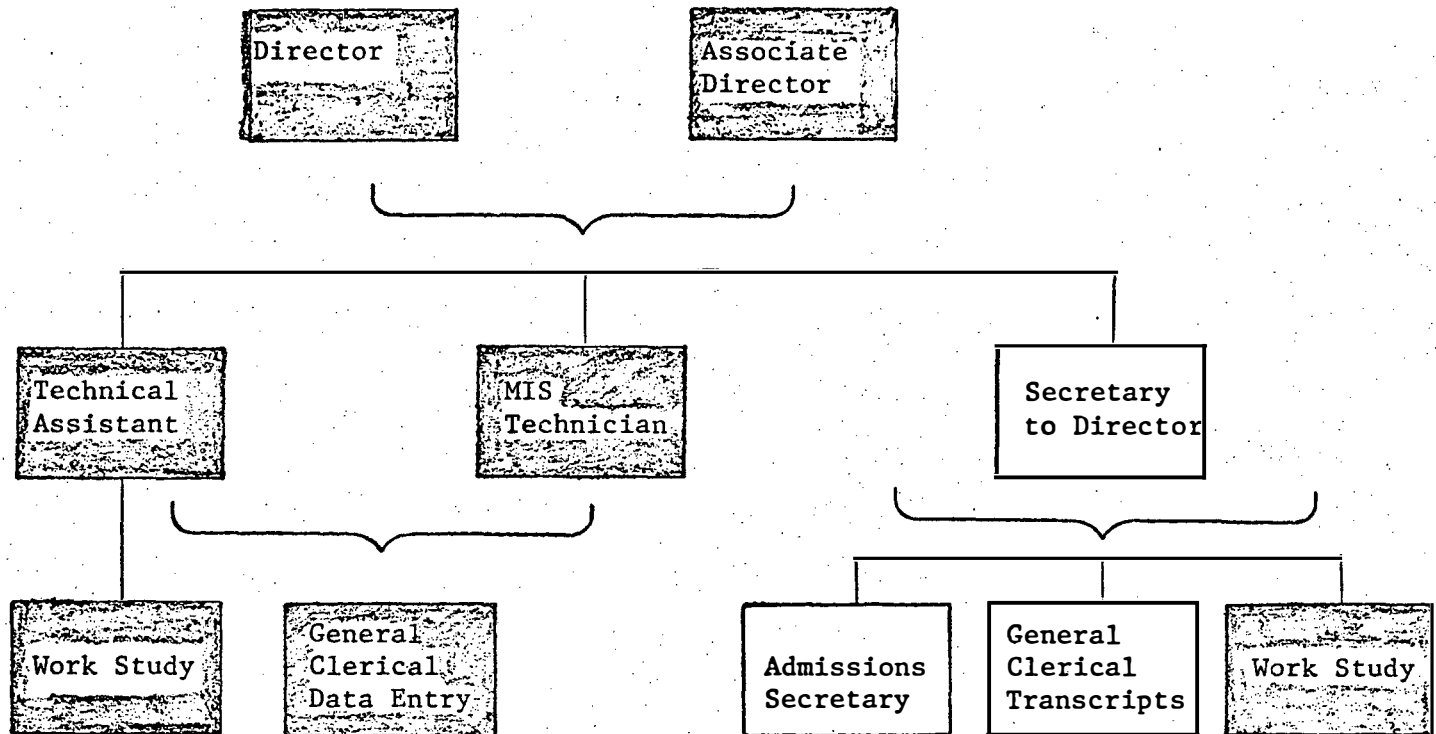
\$54,329

Additions

Assoc. Dir. of Informational Systems and of the Office of Admissions & Records	\$17,500
Technical Asst. in Charge of Operations	8,841
MIS Technician	8,113
General Clerical (no additional cost for replacement)	-
Part-time teacher to teach classes taught by Asst. to the Dir. of Data Processing	3,600

\$38,054

Organizational Chart
of the Data Center
and the Office of
Admissions & Records



Shaded areas will work in both the
Data Center and the Office of Admissions & Records

Duties and Responsibilities of the Director of Informational Systems

The Director of Informational Systems is responsible to the President. His duties and responsibilities include the following:

1. To be in charge of and responsible for all administrative data processing equipment owned or leased by the College except for small business machines that are purchased for and assigned to specific departments.
2. Administer policy concerning project priorities.
3. System analyst work - This includes conferences with the department representatives to determine what services are wanted. Analysis of current files to determine whether information is available or must be collected. Review of forms to determine that the information will be useful to persons requesting information.
4. Programming ability and implementation - Responsible for following a project through to implementation including all necessary documentation that is required.
5. Give leadership and assistance in developing computer applications for various departments.
6. Serve as a consultant in selecting materials to be used in data processing education.
7. Function as a resource person for all college departments in setting up information processing for the departments, including bookkeeping, statistical and research projects.
8. Submit budget and reports appropriate to carrying on data processing work.
9. Supervise all personnel assigned to the Data Center and the Office of Admissions and Records.
10. Responsible for all Federal and State reports concerning student characteristics.
11. Coordinate the use of the research capabilities of the computer center.
12. Maintain student records and be responsible for the security and organization of these records.
13. Maintain records of final grades by sections.
14. Organize and administer the registration of students for fall, spring, and summer.
15. Sign transcripts and affix the College seal.
16. Certify refunds for students dropping courses.
17. Prepare lists of student status.
18. Publish complete course offering each term.
19. Prepare student class schedules in cooperation with the Dean of Career Education and Dean of Arts & Sciences.
20. Certify requirements for students who are candidates for graduation.
21. Supply information relative to student reports.
22. Maintain file of changes, deletions and additions of courses for catalog. Assign course numbers and curriculum numbers.
23. Process waivers of college requirements and notify students and counselors.

24. Prepare and certify eligibility lists for college athletic purposes.
25. Maintain records of withdrawals with reason student withdraws.
26. Order all diplomas and certificates needed for graduation.
27. Keep records on credits earned by evaluation.
28. Distribute the school calendar within two weeks after Board approval.

SAUK VALLEY COLLEGE

RURAL ROUTE ONE,

DIXON, ILLINOIS 61021

DATE December 18, 1978

MEMORANDUM

TO: Dr. Cole

FROM: Walter Clevenger

If the Board approves the salary of \$17,500.00 for Alan Pfeifer, then \$1,750.00 will have to be transferred to the Data Processing Services Salaries Professional #195-000-512.

SAUK VALLEY COLLEGE

RURAL ROUTE ONE,

DIXON, ILLINOIS 61021

DATE December 11, 1978

MEMORANDUM

TO: Dr. Cole

FROM: Walter Clevenger

RE: Reconsideration of reassigning Richard Doolen to an instructional position

The reorganization of the Data Processing Department was done strictly from an administrative standpoint.

Any assignment of an instructional position for Richard Doolen would be considered by the Dean of Career Education.

Technical Assistant in Charge of Operations

Duties and Responsibilities:

1. Responsible for the scheduling and operating of the computer system.
2. Responsible for all Data Entry in the computer room.
3. Responsible for the maintenance of the computer forms inventory.
4. Responsible for the accurate preparation and processing of data received from user departments.
5. Responsible for general office duties, including, filing, typing, and keypunching.

Qualifications:

1. Knowledge of, and ability to operate the computer system.
2. High proficiency skills in keypunching and data entry to terminals, and the ability to operate typewriters, calculators, and other general office equipment.
3. Ability to supervise work study and other clerical personnel.
4. Must be able to make decisions, schedule and proceed with work that needs to be done without being directed.
5. Two years of college education, or equivalent experience.

Duties and Responsibilities of the Associate Director of Informational Systems and of the Office of Admissions and Records

The Associate Director of Informational Systems and of the Office of Admissions and Records reports directly to the Director of Informational Systems and carries out assignments made by the Director of Informational Systems.

The Associate Director of Informational Systems and of the Office of Admissions and Records is responsible for all areas of operation within the scope of the Director of Informational Systems.

The Associate Director of Informational Systems and of the Office of Admissions and Records should be knowledgeable of, and have experience with, on-line programming systems.

Management Information Systems Technician

Duties and Responsibilities:

1. Review and assist in the preparation of state, federal, and internally generated reports.
2. Maintenance and review of the state master course file.
3. Maintenance and review of the course offer file.
4. Supervision and assistance in all student registration procedures (add, drop, or changes in all classes).
5. General office duties, including, supplying information to various offices, maintenance of student files, distribution of grade sheets, class rosters, etc, and any other duties assigned.

Qualifications:

1. Proficient in typing, and the ability to accurately enter data through the terminals.
2. Ability to supervise other clerical personnel.
3. Must be able to make decisions and proceed with work that needs to be done without direct supervision.
4. Pleasing personality and ability to deal with the public.

SAUK VALLEY COLLEGE

RURAL ROUTE ONE,

DIXON, ILLINOIS 61021

DATE November 27, 1978

MEMORANDUM

TO: Sauk Valley College Board of Trustees

FROM: Dr. George E. Cole G.E.C.

The attached letter from Asst. Dean Pintozzi contains a proposed letter of agreement between Sauk Valley College and the Lee County Special Education Association. This is being presented to the Board at this time for discussion and possible approval.

As President, I feel this effort is extremely valuable as it is the first step in forming a relationship between Sauk Valley College and the surrounding schools to deal with individuals who (for one reason or another) have not completed the four-year high school program.

For every 100 freshmen that start at the high school level, more than 30 fail to complete the high school program. The number of adult residents in our area who have not completed their high school training is estimated to be in excess of 30,000. This group has long been recognized as a ready market but most programs in the past have been less than effective.

RECOMMENDATION: After this proposed agreement has been properly reviewed by the Board attorney, I recommend it be approved.

mv

SAUK VALLEY COLLEGE


RURAL ROUTE ONE,

DIXON, ILLINOIS 61021

DATE 11-22-78

MEMORANDUM

TO: Dr. Cole

FROM: Frank Pintozzi 

I would like to present the enclosed cooperative agreement to the administrative council on Monday, November 27. This agreement is between the Lee County Special Education Association and Sauk Valley College. It will allow students from the Project Choice Alternative School to participate in Sauk's GED program when these students are not attending the Alternative School classes. Sauk Valley College will be allowed to offer adult and community education classes when the Project Choice facility is not being used for alternative school classes. This facility is located at 609 W. Third, Dixon, Illinois.

Jim Barber and I have been developing this project with Clint Conway and Jim Ferolo, officers of the Lee County Special Education Association, and Roger Walker, the counselor-instructor for Project Choice.

We have all reviewed this document and agree on the content. Feel free to ask any questions you may have. I believe the Board of Trustees will want to consider this agreement as well.

jh

cc: Administrative Council Members

enclosures

Overview

The Project Choice-Sauk Valley College Project is a program of educational cooperation between the Lee County Special Ed. Association and Sauk Valley College. In this project, students from Project Choice who qualify for the GED high school equivalency diploma could take GED preparation courses at Sauk Valley College. These students would be entitled to all the rights and privileges of any matriculated student at the college. In addition, Sauk Valley College would bring adult and continuing education courses to Project Choice located in the Carl Fisher Building, 609 West Third, Dixon, Illinois.

Role of Sauk Valley College

Sauk Valley College is committed to serving the varied educational needs of the community. Encompassing the counties of Lee, Whiteside, and parts of Bureau, Ogle, Henry and Carroll counties, the Sauk Valley College annually provides educational opportunity to over 4000 full and part-time students in the district. Educational services range from career and vocational programs to college transfer programs and adult and community education offerings.

Sauk Valley College is also very interested in fostering interagency projects which would involve integration of educational services. Often such projects result in more effective delivery systems for students as well as promoting a spirit of cooperation between social and educational agencies.

Through the years, Sauk Valley College has provided special academic programs for the educationally disadvantaged and community services classes for adults, in the belief that educational opportunity should be available to all citizens of the district. In addition, the college believes that through educational upgrading and enrichment of citizens, the entire community benefits in terms of better jobs, fuller lives, and further educational options.

The following goals are thus established for the Project Choice-Sauk Valley College Project:

Goals

1. To offer GED courses and testing through Sauk Valley College to high school dropouts from the Project Choice who would qualify for the GED high school equivalency diploma.
2. To offer community service classes in the Carl Fisher Building to citizens of Dixon and surrounding communities at times when the building is not being used by Project Choice.

Methodology

1. To provide GED courses in reading in the content areas, general mathematics, basic writing skills, and personal growth through the Sauk Valley College Academic Skills program. Dropouts from the Project Choice would enroll in existing GED classes offered in the college schedule. (see attachment from college catalog)

2. To offer adult and community service classes to citizens of Dixon and surrounding areas based on individual needs. Course possibilities would be in such areas as culture, homemaking, health, recreation, family life and community development. (see attachment from college catalog)

Exchange of Services and Facilities

1. Students participating in the program at the Carl Fisher Building may enroll at Sauk Valley College providing the assigned monitor-facilitator approve their enrollment in classes that will not interfere with their participation in Project Choice.
2. Students may enroll in Sauk Valley College classes again following suggestions in curriculum and individual course approval from the monitor facilitator.
3. Sauk Valley College may bring individual courses to Project Choice in Dixon (i.e. GED or other developmental courses which will be conducted at the Carl Fisher Building.)
4. Sauk Valley College will conduct adult education classes at the Carl Fisher Building when the classrooms are not being used specifically for Project Choice courses.
5. Sauk Valley College will provide office space and telephone service on campus for the monitor-facilitator from Project Choice so that he may provide counseling services for students enrolled in the cooperative project attending Sauk Valley College classes.
6. Sauk Valley College will provide individual and group counseling services for students enrolled in Project Choice including aptitude and interest testing, career advisement and personal counseling.
7. Following specific college policy Project Choice students may participate in any program offered by Sauk Valley College pending approval by the Project Choice monitor-facilitator or Sauk Valley College advisors.
8. It is understood that possible tuition sources for these students may include CETA, BEOG grants, personal financing, and Title III (Adult Education grants).

Evaluation of the Project

Several methods will be employed to evaluate this cooperative project. Among them will be periodic written observations of the program by the monitor-facilitator from Lee County Special Education Association and the assistant dean of learning skills and resources from Sauk Valley College. Students in the program will also be given the opportunity to evaluate classes and services.

Program Coordinators

The coordinator from Project Choice will be Roger Walker. The coordinator from Sauk Valley College will be Frank Pintozzi, Assistant Dean, Learning Skills and Resources.

CERTIFICATE PROGRAM

ACADEMIC SKILLS

This program contains areas of study designed to furnish the student with an introduction to the major fields of knowledge. It offers individualized attention by instructors, small class size, systematic professional counseling and a curriculum planned as a coherent whole.

General objectives: (1) provide a skill-building program for students who are unable to pursue college work without additional preparation; (2) provide a program for those who desire some college experience for employment or personal reasons; (3) provide a program for those students who have been out of school a number of years and feel the need for review work before beginning college level study; and (4) provide a program to prepare students for successful completion of high school equivalency education.

Summary of Certificate Requirements

The completion of 12 semester hours of study selected from the following courses:

	Semester Hours
GSP 050 Reading and Study Skills	3
GSP 100 Efficient Reading	3
GSP 061 English as a Second Language	3
GSP 063 Basic Writing Skills	3
GSP 070 Fundamentals of Mathematics	3
GSP 071 Fundamentals of Algebra	3
GSP 080 G.E.D. Tutorial*	3-6
GSP 085 Individual Growth in a Changing Environment	3
	<u>12</u>
* Students must receive the G.E.D. diploma for this credit to count towards the certificate.	
Electives (Selected by the student and advisor	9
Total required for certificate	21

All students must satisfy the Illinois State Constitution examination requirement either by course work or special examinations.

GENERAL STUDIES PROGRAMS

In keeping with its philosophy as a comprehensive community college, Sauk Valley provides programs and courses for those students whose demands and interests are not met by one of the other areas of interest.

The General Studies program was established to meet the needs of those individuals who, for one reason or another, do not wish to pursue an Associate Degree in a transfer program or an Associate in an Applied Science Degree in a career program.

All courses in the General Studies program carry academic credit which can be applied only toward a certificate within the General Studies program at Sauk Valley College.

General Studies certificates are available in the following areas:

- Personal Development
- Intellectual and Cultural
- Homemaking
- Health, Safety and Environment
- Improving Family Circumstances
- Development and/or Review of Vocational Skills
- Community and Civic Development
- Developmental Preparatory or Basic Skills

BILLS PAYABLE

December 19, 1978

EDUCATIONAL FUND

2-000-544	POSTMASTER	Postage meter	2988	\$	5,000.00
	SVC BOND & INTEREST FUND #1	Inter-fund loan	3171	\$	8,000.00
	SVC PAYROLL FUND	11-30-78 Payroll	3172		92,552.53
-000-550	GEORGE COLE	Expenses	3173		138.56
-813-514-01	MARIAN SCHWABBAUER, M.T.	Honorarium	3174		50.00
-813-514-01	GEORGE FRITSMA, M.T.	" "	3175		100.00
-813-514-01	LARRY SCHOEFF, M.T.	" "	3176		50.00
-813-514-01	RAY STEPHENS,	" "	3177		50.00
-813-514-01	PAT NICHOLSON, M.T.	" "	3178		50.00
-813-514-01	CAROL CARNOYER, M.T.	" "	3179		50.00
-813-514-01	DR. EDWARD RENNER	" "	3180		50.00
-813-514-01	BEVERLY FIORELLA, M.T.	" "	3181		100.00
					<hr/>
					\$106,191.09

2,000,585.01	AGFA GEVAERT REX INC	EQUIPMENT	3,182		157.15
0,418,543.00	ALLYN AND BACON	SUPPLIES	3,183		12.46
0,711,543.00	AMERICAN SOC OF CLINICAL PATHOL	SUPPLIES	3,184		156.00
0,200,543.00	AMERICAN VEGETABLE GROWER	SUBSCR	3,185		12.00
1,000,545.00	BAKER & TAYLOR CO	BOOKS	3,186		91.54
1,000,545.00	BAKER & TAYLOR CO	BOOKS	3,187		889.57
0,100,550.00	GLENN BAILEY	TRAVEL	3,188		140.27
0,813,550.00	JAMES BARBER	TRAVEL	3,189		102.56
0,000,530.00	B & B TOWER SERVICE	SERVICE	3,190		67.00
2,000,550.00	FLORENCE BERTSCH	TRAVEL	3,191		18.60
0,000,541.00	BLACKHAWK OFFICE SUPPLY	SUPPLIES	3,192		13.68
0,511,543.00	DICK BLICK	SUPPLIES	3,193		10.59
0,300,543.00	BOGOTTS	SUPPLIES	3,194		197.76
0,512,543.00	BOWLING GREEN UNIV	SUPPLIES	3,195		14.95
0,300,543.00	BRUNING DIVISION	SUPPLIES	3,196		27.46
0,811,550.01	NOAH BUNCH	TRAVEL	3,197		81.57
0,000,545.00	BUREAU OF LABOR STATISTICS	BOOK	3,198		12.50
0,815,543.00	CAMBRIDGE BOOK CO	SUPPLIES	3,199		282.68
6,000,575.00	CENTRAL TELEPHONE CO	SERVICE	3,200		1,753.13
	VOID CHECK		3,201		.00
	VOID CHECK		3,202		.00
	VOID CHECK		3,203		.00
0,000,545.00	CHICAGO HISTORICAL SOC	BOOKS	3,204		51.55
2,000,554.00	CHRONICLE OF HIGHER EDUC	SUPPLIES	3,205		67.03
5,000,550.00	WALTER CLEVENGER	TRAVEL	3,206		8.70
0,000,545.00	COLUMBIA UNIVERSITY PRESS	BOOKS	3,207		76.39
0,000,545.00	CONGRESSIONAL QUARTERLY	BOOKS	3,208		68.00
0,100,543.00	CONWILL SERVICES	BOOK	3,209		1.00
5,000,541.00	COPPINS LETTER SHOP	SUPPLIES	3,210		80.00
0,300,543.00	DOALL ROCKFORD CO	SUPPLIES	3,211		40.85
0,000,530.00	EASTMAN KODAK CO	SERVICE		53.00	
0,000,544.01	X X X	SUPPLIES	3,212	105.50	158.50
0,000,530.00	EASTMAN KODAK CO	SERVICE	3,213		17.19
0,000,545.00	EDUCATIONAL A V	BOOKS	3,214		93.98
8,000,541.00	EDUCATORS PROGRESS SERV	SUPPLIES	3,215		13.95
2,000,550.00	ROBERT EDISON	TRAVEL	3,216		114.19

0.000,550.00	EMERALD HILL	ARTICULATION	3,217	210.00
0.000,545.00	FEDERAL RESERVE BANK OF N Y	BOOK	3,218	31.50
0.600,543.00	FISHER SCIENTIFIC CO	SUPPLIES	3,219	15.89
0.100,550.00	CARL GATES	TRAVEL	3,220	26.00
0.711,543.00	GIBCO DIAGNOSTICS	SUPPLIES	3,221	20.89
0.512,530.00	VINCENT GILBERT	PIANO TUNING	3,222	38.00
0.400,543.00	GROVE PRESS INC	SUPPLIES	3,223	22.85
0.511,543.00	HALLS L P GAS SERV	SUPPLIES	3,224	55.00
0.100,530.00	DEBORAH HEFFERIN	VIDEOTAPING	3,225	45.00
0.000,544.02	THE HIGHSMITH CO	SUPPLIES	3,226	102.85
0.117,550.00	RICHARD HOLTAM	TRAVEL 30.20		
0.316,550.00	X X	30.20	3,227	60.40
0.000,562.00	I B M	EQUIPMENT	3,228	402.48
0.800,530.02	I B M	SERVICE 30.22		
2.000,541.00	X X	244.20		
2.000,539.00	X X	52.91	3,229	327.33
1.000,550.00	I C C T A	TRAVEL	3,230	35.00
0.000,575.00	ILL BELL TELEPHONE CO	SERVICE	3,231	160.23
2.000,593.00	ILL VALLEY COMM COLLEGE	TUITION	3,232	549.28
2.000,544.01	JOSTENS	SUPPLIES 78.40		
0.000,549.00	X X	DIPLOMA 4.22	3,233	82.62
1.712,550.00	JANET KIME	TRAVEL 13.65		
0.812,550.02	X X	157.90	3,234	171.55
2.000,541.00	KIPLINGER WASHINGTON LETTER	SUBSCR	3,235	42.00
0.714,543.00	R S LANDAUER JR	SUPPLIES	3,236	284.51
0.815,550.00	KATHRYN LILLYMAN	TRAVEL	3,237	42.50
1.000,545.00	MACMILLAN PUBL CO	BOOKS	3,238	65.48
1.500,550.00	JERRY MATHIS	TRAVEL	3,239	217.00
1.000,530.00	MIDWEST VISUAL EQUIP	SERVICE	3,240	59.00
1.600,543.00	MODERN FILM RENTALS	SUPPLIES	3,241	27.15
1.300,543.00	MOTOR MAGAZINE	SUPPLIES	3,242	17.00
0.815,530.00	ED MUELLER A V	SERVICE 15.00		
2.000,530.00	X X X	X X 120.20	3,243	135.20
1.800,542.00	MULTIGRAPHICS DIV	SUPPLIES	3,244	143.65
1.000,545.00	NATL CENTER FOR HIGHER EDUC MANAGEMENT	BOOKS	3,245	18.50
0.000,541.00	NATL COMPUTER SYSTEMS INC	SUPPLIES 372.80		
0.000,530.00	X X X X	MAINT CONTR 115.00	3,246	487.80
0.000,541.00	NATL DATA PRODUCTS	SUPPLIES	3,247	73.45
1.000,545.00	NATL GEOGRAPHIC SOC	BOOKS	3,248	6.95
0.000,562.00	NCR CORP	EQUIPMENT	3,249	2,515.60
1.811,541.01	NCSCHBE	DUES	3,250	225.00
1.400,550.00	FRED NESBIT	TRAVEL	3,251	79.02
1.000,545.00	NEW GLIDE PUBL INC	BOOKS	3,252	8.70
2.000,585.01	OMS INC	EQUIPMENT	3,253	216.92
1.100,543.00	OVERLOOK CO	SUPPLIES	3,254	2.50
0.300,543.00	P & W SUPPLY	SUPPLIES	3,255	56.70
1.715,550.00	FRANK PALUMBO	TRAVEL	3,256	22.80
2.000,593.00	PARKLAND COLLEGE	TUITION	3,257	1,526.28
0.000,550.00	DUANE PAULSEN	TRAVEL	3,258	19.10
0.300,543.00	PAXTON PATTERSON	SUPPLIES \$139.52		
2.000,585.01	XX XXXX	EQUIPMENT 185.50	3,259	325.02
0.512,543.00	PHOENIXONGS	SUPPLIES	3,260	26.00

7,000,550.00	KAREN PINTER	TRAVEL	3,261	25.05
10,815,543.00	PRENTICE HALL	SUPPLIES	3,262	94.95
20,000,545.00	PUBLIC AFFAIRS COMMITTEE	BOOKS	3,263	15.09
95,000,562.00	RADIO RANCH INC	EQUIPMENT	3,264	250.00
10,300,543.00	RETCO ALDOY CO	SUPPLIES	3,265	3.92
20,000,545.00	RIDLEY ENSLOW PUBL	BOOKS	3,266	8.09
10,800,543.00	R GRAPHICS INC	SUPPLIES	3,267	19.54
20,000,545.00	ROSE DISCOUNT RECORDS	BOOKS	3,268	115.94
10,511,543.00	ROWLAND PRINTING	SUPPLIES	3,269	19.50
38,000,550.00	JOHN SAGMOE	TRAVEL	3,270	59.60
10,100,543.00	SVC BOOKSTORE	SUPPLIES		\$ 17.83
10,117,543.00	XX XXXX	SUPPLIES		.69
10,316,543.00	XX XXXX	SUPPLIES		2.15
10,420,543.00	XX XXX	SUPPLIES		4.50
10,511,543.00	XX XXXX	SUPPLIES		39.81
10,600,543.00	XXX XXXX	SUPPLIES		3.24
10,711,543.00	XXX XXXX	SUPPLIES		2.20
10,811,541.02	XXX XXXXX	SUPPLIES		2.95
20,000,544.01	XXX XXXX	SUPPLIES		1.74
31,000,541.00	XXX XXXXX	SUPPLIES		.61
38,000,541.00	XXX XXXX	SUPPLIES		41.81
52,000,541.00	XXX XXXX	SUPPLIES		1.05
10,816,550.00	SVC RESTRICTED PURPOSES	TRAVEL	3,271	118.58
10,300,543.00	SAW SERVICE SHOP	SUPPLIES	3,272	57.80
10,512,543.00	G SHIRMER INC	SUPPLIES	3,273	33.55
38,000,550.00	MICHAEL SEGUIN	TRAVEL	3,274	36.65
8,000,550.00	SERVOMATION CORP	SERVICE	3,275	34.35
10,714,550.00	STANLEY SHIPPET	TRAVEL	3,276	115.00
10,100,543.00	SITLERS SUPPLIES INC	SUPPLIES		\$51.77
10,815,543.00	XXX XXX XX	SUPPLIES		76.87
10,800,542.00	GLENN SPUTE	SUPPLIES	3,278	128.64
10,815,543.00	SCIENCE RESEARCH ASSOC INC	SUPPLIES	3,279	88.50
39,000,550.00	GEORGE STANLEY	TRAVEL	3,280	207.63
10,300,543.00	STERLING BUSINESS MACH	SUPPLIES	3,281	56.70
10,800,530.01	XXX XXXX XXX	SUPPLIES		\$ 1.40
10,800,542.00	XXX XXX XXX	SERVICE		46.10
38,000,541.00	XXX XXXX XXXX	SUPPLIES		78.00
52,000,541.00	XXX XXXX XXXX	SUPPLIES		3.25
20,000,544.02	STERLING CAMERA CENTER	SUPPLIES		485.00
10,310,538.00	STERLING SCHOOL OF BEAUTY	SUPPLIES	3,282	613.75
10,812,550.01	JAMES STRICKLAND	COSMETOLOGY	3,283	92.60
20,000,550.00	ROBERT THOMAS	TRAVEL	3,284	1,055.60
10,500,530.00	MARVIN THOMPSON	TRAVEL	3,285	44.45
95,000,541.00	UARGO INC	SERVICE	3,286	14.70
10,815,550.00	CHARLES WALRATH	SUPPLIES	3,287	326.00
10,600,543.00	WARDS NATURAL SCIENCE EST	TRAVEL	3,288	315.66
10,712,543.00	WAYNE STATE UNIVERSITY	SUPPLIES	3,289	133.50
10,300,543.00	WELDERS SUPPLY CO	SUPPLIES	3,290	12.30
92,000,565.00	WENSEL WILKINS LOWE & WHEELER	SUPPLIES	3,291	17.35
20,000,545.00	WEST PUBL CO	PREMIUM	3,292	135.60
82,000,541.00	WRITING SALES INC	BOOKS	3,293	20.00
20,000,544.03	XEROX CORP	SUPPLIES	3,294	30.00
2,000,521.00	PRUDENTIAL INS CO	SUPPLIES	3,295	373.97
10,600,543.00	SVC PETTY CASH FUND	PREMIUM	3,296	316.54
10,813,543.00	XXX XXX XXXX	SUPPLIES	3,297	8,514.11
10,815,543.00	XXX XXX XXXX	SUPPLIES		4.91
91,000,549.00	XXX XXXX XXXX	SUPPLIES		7.90
92,000,544.00	XXX XXXX XXXX	SUPPLIES		2.06
		SUPPLIES		1.02
		SUPPLIES	3,298	17.49
		SUPPLIES		2.50

SVC IMPREST FUND

MISC SUPPLIES

3,299 592.47

TOTAL EDUC. BILLS

28,026.27

Cks. #2988, 3171 - 3181

106,191.09

TOTAL EDUCATIONAL FUND FOR DECEMBER

\$ 134,217.36

BUILDING FUND

0,000,544.00	CARDINAL AUTO PARTS	SUPPLIES	5,302	3.05
0,000,544.00	COAST TO COAST STORE	SUPPLIES	5,303	8.64
0,000,544.00	CRESCENT ELECTRIC	SUPPLIES	5,304	4.04
0,000,544.00	DIXON PAINT CO	SUPPLIES	5,305	7.01
0,000,544.00	DIXON SWIMMING POOL SUPPLY	SUPPLIES	5,306	60.00
0,000,544.00	DUBOIS CHEMICALS	SUPPLIES	5,307	54.88
0,000,544.00	FISHER CONTROLS CO	SUPPLIES	5,308	80.63
0,000,550.00	GLADYS GUNTLE	TRAVEL	5,309	4.20
0,000,544.00	JOHNSTON LUMBER CO	SUPPLIES	5,310	39.60
0,000,544.00	LEE F S INC	SUPPLIES	5,311	286.34
1,000,530.00	DAVID MAYES	SEWAGE TESTING	5,312	165.00
1,000,530.00	MONTGOMERY ELEVATOR CO	SERVICE	5,313	404.44
0,000,544.00	MORGAN LINEN SERV	SUPPLIES	5,314	63.03
0,000,544.00	MOTT BROS CO	SUPPLIES	5,315	5.88
6,000,571.00	NORTHERN ILL GAS	SERVICE	5,316	3,107.03
6,000,571.00	NORTHERN ILL GAS	SERVICE	5,317	4,168.02
1,000,530.00	ROCK VALLEY DISPOSAL	SERVICE	5,318	76.00
0,000,544.00	SVC BOOKSTORE	SUPPLIES	5,319	3.78
2,000,561.00	STERLING PARK DIST	POOL RENTAL	5,320	36.00
1,000,530.00	STEWART TRUCK & EQUIP	SERVICE	5,321	55.00
1,000,530.00	JOE TULLYS REPAIR	SERVICE	5,322	70.57
	SVC IMPREST FUND	MISC EXPENSES	5,323	48.31

TOTAL BUILDING FUND FOR DECEMBER

8,751.45

BOND AND INTEREST #1

00-000-563	AMERICAN NATIONAL BANK & TRUST	Principal - 225,000.00		
00-000-564	" " " "	Interest - 35,325.00		
00-000-569	" " " "	Fees - 138.12	117	\$260,463.12
	SVC EDUCATIONAL FUND	Repay loan	118	<u>8,000.00</u>
TOTAL BOND & INTEREST #1 for December				\$268,463.12

SITE AND CONSTRUCTION FUND

	SVC EDUCATIONAL FUND	Repay loan	607	\$ 20,000.00
00-000-584-04	HONEYWELL, INC.	Equipment	608	756.00
00-000-584-02	RATHS, RATHS & JOHNSON, INC.	Services	609	<u>192.00</u>
TOTAL SITE AND CONSTRUCTION FOR DECEMBER				\$ 20,948.00

IMPREST FUND

November, 1978

110-815-550	VOID Check #4470 written Oct. 31			\$ -25.00
176-000-573	Sue Dixon	Phone calls	4480	5.03
176-000-575	Cheryl Weckesser	Phone calls	4481	1.14
192-000-544	United Parcel Service	Service	4482	3.04
110-811-550-02	Pepperdine University (Foster)	Conference fees	4483	150.00
110-812-550-01	Pepperdine University (Strickland)	Conference fees	4484	150.00
110-200-543	University of Illinois	Supplies	4485	23.00
110-512-543	Jenson Publications Inc.	Supplies	4486	15.00
110-100-543	Southern Business Publications	Supplies	4487	12.95
271-000-530	Div. of Boiler & Pressure Vessel Safety	Inspection	4488	4.00
120-000-544-01	Human Nature	Subscr.	4489	15.00
110-512-543	Rose Discount Records	Supplies	4490	35.81
120-000-544-02	Betty Orlowski	Supplies	4491	5.16
192-000-544	United Parcel Service	Service	4492	3.77
270-000-544	Service Saw Co.	Supplies	4493	44.31
110-512-543	Hennikers Electronics	Supplies	4494	61.85
110-512-543	Center for the Study of Popular Culture	Supplies	4495	25.00
192-000-544	Postmaster	Deposit	4496	25.00
138-000-550	Anne Powers	Supplies	4497	2.22
192-000-544	United Parcel Service	Service	4498	2.00
	VOID CHECK		4499	
182-000-541	Ill. Assn. Comm. Coll. Bus. Admin.	Conference fees	4500	25.00
120-000-544-01	Dixon Evening Telegraph	Supplies	4501	29.00
138-000-550	Only Sheraton Inn	Workshop-Marlier	4502	27.50
				<hr/>
				640.78

EDUCATIONAL FUND - 592.47
BUILDING FUND - 48.31

Balance in fund - 2383.22
Disbursements - 640.78
Total in fund - 3024.00

SAUK VALLEY COLLEGE

E.O.G. WORK STUDY FUNDS

Period Ending November 30, 1978

B A L A N C E S H E E T

Cash on Hand.....	\$ 17,058.50	
Workstudy Awards Receivable from Fed. Gov. 1978-79.....	82,135.00	
Workstudy Awards Capital 1978-79.....		147,135.00
Workstudy Awards Paid 1978-79.....	54,547.92	
E.O.G. Funds Receivable from Fed. Gov. 1978-79.....	25,231.00	
Initial E.O.G. Awards Capital 1978-79.....		17,346.00
Initial E.O.G. Awards Paid 1978-79.....	5,050.00	
Renewal E.O.G. Awards Capital 1978-79.....		25,193.00
Renewal E.O.G. Awards Paid 1978-79.....	9,977.00	
Basic E.O.G. Awards Rec. from Fed. Gov. 1978-79.....	80,440.00	
Basic E.O.G. Awards Capital 1978-79.....		152,440.00
Basic E.O.G. Awards Paid 1978-79.....	68,217.66	
Inactive Federal Grants.....	398.92	
Transfer Account.....		942.00
	<u>\$343,056.00</u>	<u>\$343,056.00</u>

SAUK VALLEY COLLEGE

APPROVED BY

William E. Reigh

PRESIDENT

Lorna Keefer

SECRETARY

DATE _____

SAUK VALLEY COLLEGE BOOKSTORE

Period Ending 10-31-78

B A L A N C E S H E E T

ASSETS:

Cash in Bank	\$42,309.81
Petty Cash.....	400.00
Investments.....	49,087.56
Inventory 6/30/78.....	45,448.60
Accounts Receivable - Educational Fund.....	121.84
	<u>\$137,367.81</u>

LIABILITIES AND NET WORTH:

Accounts Payable - Student Activities Fund.....	\$ 48.00
Fund Equity.....	\$154,767.29
Net Loss.....	(-17,447.48)
	<u>137,319.81</u>
	<u>\$137,367.81</u>

P R O F I T A N D L O S S

INCOME:

Textbook Sales.....	\$80,660.49
Supply Sales.....	8,017.23
Miscellaneous Sales.....	3,548.96
Paperback Sales.....	1,400.00
Used Book Sales.....	2,701.02
Sales Tax Collected.....	4,793.34
Other Income.....	74.31
Investment Income.....	503.76
	<u>\$101,699.11</u>

EXPENSES:

Textbook Purchases.....	\$93,907.51
Supply Purchases.....	6,009.06
Miscellaneous Purchases.....	4,229.84
Paperback Purchases.....	858.98
Used Book Purchases.....	2,086.05
Sales Tax Paid.....	4,223.70
Salaries and Wages.....	4,887.60
Transportation Charges.....	1,894.19
Supply Expense.....	100.61
Travel.....	297.04
Telephone.....	85.30
Dues & Subscriptions.....	10.00
Other Expense.....	547.10
Over & Under.....	9.61
	<u>\$119,146.59</u>

NET LOSS on a cash basis without regard to inventory or
accounts payable.....\$(-17,447.48)

RESTRICTED PURPOSES FUND

STATEMENT OF INCOME & EXPENSE

November 30, 1978

ACTIVITIES	AMOUNT
Comprehensive Fee Income	\$ 4,462.92
Athletic Income	47.00
Drama Income	397.55
Student Activity Income	1,994.75
Student Newspaper Income	99.40
Film Income	97.80
Cash Over & Under	19.70
Other Income-Student Activity Fund Only	-0-
TOTAL INCOME	<u>\$ 7,119.12</u>

	BUDGET	EXPENSE
Athletic Expense	\$17,040.00	\$4,526.92
Cheeleaders & Pon Pom Expense	370.00	10.20
Speech Activities/Readers Theatre	4,000.00	2,247.31
Drama Expense	2,400.00	1,079.66
Music Expense	2,870.00	441.95
Student Activity Expense	10,035.00	2,758.41
Student Newspaper Expense	4,000.00	558.11
Associated Student Board	2,100.00	572.27
Musical	2,000.00	1,123.39
Women's Intercollegiate Act.	9,000.00	3,356.86
Intramurals-Coed	300.00	28.00
SVC Clubs	2,500.00	355.49
Film Commission	2,000.00	929.23
Art Exhibitions	300.00	-0-
Contingency Expense/Equipment	100.00	178.76
Contingencies/Non-Budgeted	1,000.00	-0-
	<u>\$60,015.00</u>	

TOTAL EXPENSE \$18,166.56

Excess of Expenditures

over Revenue, as of

November 30, 1978

\$ (11,047.44)

RESTRICTED PURPOSES FUND

STATEMENT OF ASSETS AND LIABILITIES

November 30, 1978

<u>ASSETS</u>		<u>REVOLVING AGENCY FUND LIABILITIES</u>		<u>AMOUNT</u>
Cash in Bank	\$150,522.36	Student Tuition	\$220,600.00	
		Out-of District Fees	2,957.92	
Petty Cash	485.00	Due Educational Fund	1,503.28	
		Due Building Fund	161.67	
Accts. Rec.	104,526.13	Due Student Loan Fund	479.40	
		Due Bookstore	1,491.13	
		Tuition Refunds	<u>(12,804.80)</u>	\$214,388.60

RESTRICTED AGENCY FUND LIABILITIES

Child Care Operations	(1,677.84)
Parking	11,251.71
Recreation Room Fund	4,332.73
Student Locker Fund	196.40
Land Lab	4,385.35
Community Services	10,895.11
Child Care Center	(5.61)
EMTA Grant	-0-
Photography Supplies	1,539.31
LPN Supplies	492.67
Book Transactions	3.00
Law Enforcement Grant	1,787.00
HEW Nurses Grant	(942.00)
Nursing Capitation	121.05
1978-79 Disadvantaged Gt.	5,852.06
CETA Public Services	(3,038.80)
Ill. Humanities Grant	42.13
Miscellaneous Account	214.81
Student Clubs	1,895.54
Adult Learn. Book Charges	177.06
Community Theatre	442.33
College Van	785.70
Health Student Accident Ins.	13.25
Horticulture/Greenhouse	<u>700.00</u>

\$ 39,462.96

FUND EQUITY

July 1, 1978 \$12,729.37

Excess of Expenditures
over Revenue, as of:

November 30, 1978 \$11,047.44

\$ 1,681.93

TOTAL ASSETS: \$255,533.49

TOTAL LIABILITIES & FUND EQUITY

\$255,533.49

STUDENT ACTIVITY

Balance On Hand, October 31, 1978	\$225,904.76
November Receipts	64,175.26
November Disbursements	(139,557.66)
Balance on Hand, November 30, 1978	<u>\$150,522.36</u>

CHECK #	NAME	DESCRIPTION	AMOUNT
4961		The Wrestlers Scorebook-#254 Athletic Expense/Walrath; one scorebook and one stats book	\$ 8.50
4962		Claire Holmberg-#266 Women's Intercollegiate Act.; meal for volleyball team at Elgin 11-1-78	38.44
4963		Lucille Patterson-#360 Miscellaneous; check received 16.00, paid fees 1.00 (Sr. Cit.), check change 15.00	15.00
4964		SVC Building Fund-#376 College Van; 84 gals. of gas @ 60.2¢ October 1978	50.57
4965		SVC Educational Fund-#262 Sauk Talk 3.30, #264 A.S.B. .60, #352E Disadvantaged Grant 6.09; Xerox copies made in Oct. 78	9.99
4966		SVC Building Fund-#258 Drama Expense; use of trucks on 10-10-78 & 10-12-78; 45 miles at .08	3.60
4967		SVC Bookstore-#251 Athletic Expense/Palumbo 28.50, #257 Speech Activities 11.75 & #352E Disadvantaged Grant 35.40	75.65
4968		Rockford Newspapers-#103 Accts. Rec./Adult Basic Educ. Grant D-21; advertisement for counselor-recruiter	9.94
4969		Universal/16-#260 Student Activity Expense; film rental - "Creature from the Black Lagoon"	379.50
4970		Dixon Camera Center-#262 Sauk Talk; film finishing	5.62
4971		Mr. Charles Schuler-#334 Land Lab; labd lab rent due 11-1-78	585.00
4972		Muller Pinehurst Dairy-#264 A.S.B.; ice cream for Pow Wow	79.20
4973		SVC Educational Fund-#262 Sauk Talk; storeoom charges for October 1978	12.85
4974		Illinois Bell Telephone Co.-#352E Disadvantaged Grant; service 10-25 to 11-24-78	55.95
4975		Fosco Fabricators Inc.-#331 Parking; 2 parking signs	12.00
4976		Sherwin Williams Co.-#258 Drama Expense; supplies for Red Ryder	43.29
4977		Frances Call-#103 Accts. Rec./ISSC/Fall 1978; refund of 16 sem. hrs. Fall, 1978 - received ISSC Grant - tuition already deducted from BOG	256.00
4978		Virginia Smith-#320 Tuition Refunds; refund of one sem. hr. for Fall 1978	16.00
4979		Robert C. Quade-#360 Miscellaneous; check rec'd 32.00, paid fees 17.00 (1 Sr. Cit. & 1 hr. reg. tuition); check change 15.00	15.00
4980		Bernadetta Leffelman-#103 Accts. Rec./Sr. Cit. Waiver; re-	15.00

CHECK #	NAME	DESCRIPTION	AMOUNT
4981	Leo Wahl-#320	Tuition Refunds; refund of 1 sem. hr. Fall 1978	\$ 16.00
4982	David Perino-#320	Tuition Refunds; refund of 3 sem. hrs. for Fall 1978	48.00
4983		VOID	
4984	David Barajas-#320	Tuition Refunds; refund of 2 sem. hrs. for Fall 1978	32.00
4985	Linda Moshure-#103	Accts. Rec./Fall, 1978/ISSC; refund of Fall 1978 tuition, 12 hrs. - received ISSC Grant	192.00
4986	Ed Mann-#103	Accts. Rec./Military, Fall 1978; refund of 1 sem. hr. for Fall 1978 - received Military Grant	16.00
4987	Paul Law-#360	Miscellaneous; check rec'd 16.00, paid fees 1.00 (Sr. Cit.), check change 15.00	15.00
4988	Sterling Camera Center-#258	Drama Expense; film for "Red Ryder"	7.00
4989	SVC Educational Fund-#302	Out of District Fees; October 1978 trial balance	136.20
4990	SVC Educational Fund-#315	Due Educational; trial balance October 31, 1978	2,943.12
4991	SVC Building Fund-#316	Due Building Fund; trial balance October 31, 1978	357.10
4992	SVC Bookstore-#318	Due Bookstore; trial balance October 31, 1978	133.71
4993	SVC Student Loan Fund-#318;	trial balance October 31, 1978	602.91
4994	SVC Educational Fund-#258	Drama Expense 26.65, #352E Disadv. Grant 10.15; workroom supplies and service, October 1978	36.80
4995	Samuel French, Inc.-#375	Community Theatre; royalties for "Blithe Spirit" - 4 performances	125.00
4996	Kradles-#375	Community Theatre; lumber for "Blithe Spirit"	11.06
4997	Dramatists Play Service-#258	Drama Expense; royalties for "Red Ryder"	155.00
4998	Kathryn Potter-#360	Miscellaneous; cash rec'd 16.00; paid fees 1.00 (Sr. Cit.), check change 15.00	15.00
4999	Paul Potter-#360	Miscellaneous; cash rec'd 16.00; paid fees 1.00 (Sr. Cit.), check change 15.00	15.00
5000	Bakerite Bakery-#260	Student Activity Expense; 40 doz. cookies	30.24
5001	James Strickland-#335	Community Services; coffee and doughnuts for Small Business Seminar	12.18
5002	Wayne Holland-#335	Community Services; Small Business Workshop - guest speaker fee	50.00
5003	Roger A. Colmark-#335	Community Services; Small Business Seminar - guest speaker fee	50.00
5004	Bill Kozlowski-#335	Community Services; Small Business Seminar - guest speaker fee	50.00
5005	Tom Setchell-#335	Community Services; Small Business Seminar guest speaker fee	50.00
5006	Servomation Corporation-#335	Community Services; Small Business Workshop - Buffet Dinner for 35 @ \$4.85	135.80
5007	John Cook-#103	Accts. Rec./ISSC/Fall 1978; refund of Fall 1978 tuition - received ISSC Grant	165.00

CHECK #	NAME	DESCRIPTION	AMOUNT
5008	Janet Fulfs-#103 Accts. Rec./ISSC/Fall 1978; partial re-	fund of Fall 1978 tuition - received ISSC Grant	\$ 152.00
5009	Thomas Molitor-#103 Accts. Rec./ISSC/Fall 1978; partial	refund of Fall 1978 tuition - received ISSC Grant	208.00
5010	Cheryl Woods-#103 Accts. Rec./ISSC/Fall 1978; partial re-	fund of Fall 1978 tuition - received ISSC Grant	152.00
5011	Linda Curran-#103 Accts. Rec./ISSC/Fall 1978; partial re-	fund of Fall 1978 tuition - received ISSC Grant - tuition	152.00
		deducted from BOG, Billings #2	
5012	Veronica Brunner-#103 Accts. Rec./ISSC/Fall 1978; refund	of Fall 1978 tuition - received ISSC Grant - tuition de-	195.20
		deducted from BOG, Billings #2	
5013	Natalie Kesselring-#103 Accts. Rec./ISSC/Fall 1978; partial	refund of Fall 1978 tuition - received ISSC Grant - tuition	90.00
		deducted from BOG, Billings #2	
5014	James Leif-#103 Accts. Rec./ISSC/Fall 1978; refund of Fall	1978 tuition - received ISSC Grant - tuition deducted from	192.00
		BOG, Billing #2	
5015	Jan Marshall-#103 Accts./Rec./ISSC/Fall 1978; refund of Fall	tuition - received ISSC Grant - tuition deducted from BOG,	192.00
		Billing #2	
5016	Charlene Leinbach-#103 Accts./Rec./Adult Basic Educ./Grant	#957; transportation expenses to Rock Island 10-2-78 - Adult	16.50
		Basic Educ. - Regional Workshop	
5017	Shawver Press-#262 Sauk Talk; printing of newspaper 10-9-78 &	9-22-78	498.00
5018	Bender & Block Music Co., Inc.-#258 Drama Expense; supplies		13.40
5019	Association of College Unions-#260 Student Activity Expense;	annual membership dues for the year 1978	100.00
5020	Albert Veverka-#320 Tuition Refunds; refund of 2 sem. hrs.	for Fall 1978	32.00
5021	Virgil Wasson-#320 Tuition Refunds; refund of 2 sem. hrs. for	Fall 1978 - Sr. Cit.	2.00
5022	The Daily Gazette-#271 Film Commission; advertisements for	"Straw Dogs" & "Amarcord"	23.40
5023	Max Guinnup-#259 Music Expense; lunch money for choir, 19 @	5.00 each	95.00
5024	Everett Glazier-#360 Miscellaneous; check rec'd 16.00; paid	fees 1.00 (Sr. Cit.), check change 15.00	15.00
5025	Mrs. Robert Collins-#334 Land Lab; land lab rent due 11-1-78		172.25
5026	Elkhorn Corporation-#352E Disadvantaged Grant; utilities for	Rock Falls Center	92.43
5027	Reglin Janitorial Service-#352E Disadvantaged Grant; service	for Oct. 6, 13, 20, 27, 1978 - Rock Falls Center	52.00
5028	Buchmeier Motor, Inc.-#376 College Van; maintenance on van		23.70
5029	Elsie M. McPhillips-#320 Tuition Refunds; refund of 1 sem. hr.	for Fall 1978 @ 90%	14.20
5030	Linda Worsley-#103 Accts. Rec./ISSC/Fall 1978; partial refund	of tuition, Fall 1978 - received ISSC Grant - tuition de-	304.00
		deducted from BOG	

CHECK #	NAME	DESCRIPTION	AMOUNT
5031	Linda Piper-#103 Accts. Rec./ISSC/Fall, 1978; refund of	Fall 1978 tuition - received ISSC Grant - tuition deducted from BOG, Billing #2	\$ 208.00
5032	Joyce Crowley-#103 Accts. Rec./ISSC/Fall 1978; refund of	Fall 1978 tuition - received ISSC Grant - tuition deducted from BOG, Billing #2	96.00
5033	Thomas Krause-#103 Accts. Rec./ISSC/Fall 1978; refund of	Fall 1978 tuition - received ISSC Grant - paid cash originally	256.00
5034	Sandra Springer-#103 Accts. Rec./Fall '78/ISSC; refund of	Fall 1978 tuition - received ISSC Grant - paid cash originally	152.00
5035	Kroger Co.-#330 Child Care; supplies for Child Care		36.45
5036	Rock Valley Review-#352E Disadvantaged Grant; supplies for adult Learning Center		26.25
5037	Frank Palumbo-#251 Athletic Expense/Palumbo; pre-season dinner for basketball team 11-8-78		57.75
5038	SVC Payroll Fund-#103 Accts. Rec./CETA Class Size Welding	2,125.00, #330 Child Care 700.95, #335 Community Services 100.00, #352E Disadvantaged Grant 1978-79 802.30 & #354 CETA 1,249.16	4,977.41
5039	Jerry Mathis-#257 Speech Activities; workshop 10-26-10-28-78	held in Eau Claire, Wis.	426.53
5040	Rick Baker-#103 Accts. Rec./ISSC/Fall 1978; refund of Fall	1978 tuition - received ISSC Grant - tuition previously deducted from BOG, Billing #2	240.00
5041	Ligia McLaughlin-#103 Accts. Rec./BOG/Fall 1978; refund of	Lab fee, deducted from BOG in error	10.00
5042	Saul Dorfman-#260 Student Activity Expense 200.00 & Community	Services 200.00	400.00
5043	SVC Bookstore-#335 Community Services; supplies for Small	Business Seminar	5.09
5044	Michael Heckman-#103 Accts. Rec./CETA; GED testing fee for	Cathy Wright	5.00
5045	The Sport Shop-#266 Women's Intercollegiate Act.; supplies		46.25
5046	Claire Holmberg-#266 Women's Intercollegiate; meal for volleyball team at Canton		23.93
5047	Willard Burkey-#360 Miscellaneous; check rec'd 16.00, paid	fees 1.00 (Sr. Cit.), check change 15.00	15.00
5048	Economy Trophy Co.-#251 Athletic Expense/Palumbo; lettering	of seven basketball pregame shirts	4.32
5049	E. R. Schlaf & Assoc.-#335 Community Services; hazardous	materials seminar 10-28-78	1,139.85
5050	Chalet Motel-#260 Student Activity Expense; Saul Dorfman	expenses	22.05
5051	Victoria Gomez-#360 Miscellaneous; money order rec'd 875.00,	paid fees 64.00, check change 811.00	811.00
5052	Glen R. Stanley-#360 Miscellaneous; cash rec'd 40.00, paid	fees 32.00, check change 8.00	8.00
5053	The Music Gallery-#335 Community Services; music for Community	Choir	44.31

CHECK #	NAME	DESCRIPTION	AMOUNT
5054	Janice Voeltzke-#103 Accts. Rec./EOG; refund of six semester hrs., Fall 1978 - received EOG - tuition deducted from BOG Billing #2		96.00
5055	Richard Starkova-#103 Accts. Rec./Foundation; refund of Fall 1978 tuition - received Foundation Grant		125.00
5056	Steve Keegan-#320 Tuition Refunds; 90% refund of one sem. hr. Fall 1978		14.40
5057	Frank J. Richards-#320 Tuition Refunds; 100% refund of one sem. hr., Fall, 1978		16.00
5058	Peggy J. Richards-#320 Tuition Refunds; 100% refund of one sem. hr., Fall 1978		16.00
5059	Servomation Corporation-#335 Community Services; buffet for 86 persons 10-28-78 "Hazardous Materials Workshop"		437.96
5060	Charles Walrath-#102 Petty Cash; petty cash for wrestling		100.00
5061	Steck-Vaughn Co.-#352E Disadvantaged Grant; books		89.22
5062	Crescent Electric Co.-#257SSpeech Act.; 3/4 EMT		21.13
5063	Films Inc.-#271 Film Commission; "Passenger"		206.50
5064	Edna Sandoval-#352E 1978-79 Disadvantaged Grant		48.12
5065	Kevin McKee-#360 Miscellaneous; check rec'd 2.00, paid transcript 1.00, check change 1.00		1.00
5066	National League for Nursing-#341 LPN Supplies; 17 testing scores @ 8.00 each		136.00
5067	Jonni Gallentine-#103 Accts. Rec./Foundation; 100% refund of 11 sem. hrs., Fall 1978 - received Foundation Grant		176.00
5068	Sandi Wolber-#103 Accts. Rec./Foundation; refund of Fall 1978 tuition - received Foundation Grant		150.00
5069	Joseph Spanier-#103 Accts. Rec./Military/Fall 1978; refund of Fall 1978 tuition - received Military Grant		64.00
5070	Robert C. Spanier-#103 Accts. Rec./Military/Fall 1978; refund of 4 sem. hrs., Fall 1978 - received Military Grant		64.00
5071	Economy Trophy Co.-#372 Student Clubs; 2 plaques		12.00
5072	Treasurer, State of Illinois-#103 Accts. Rec./Military/ Summer, 1978		86.40
5073	Beverly Ohda-#330 Child Care; miscellaneous supplies (reimburse petty cash)		10.00
5074	Frank Palumbo-#251 Athletic Expense/Palumbo; meals for basketball team at McHenry College 11-18-78, 67.57 & scouting for basketball games 11-17-78, 17.70		85.27
5075	SVC Site & Construction Fund-#360 Miscellaneous; kitchen rental from Community Unit #5		1,000.00
5076	Richard Cheshier-#103 Accts. Rec./ISSC/Fall 1978; 100% refund of Fall 1978 tuition - received ISSC Grant; tuition deducted from BOG Billing #2		272.00
5077	The Sport Shop-#254A Athletic Expense/Walrath; one case of tape		32.00
5078	Jerry Mathis-#257 Speech Activities; expenses for Kentucky workshop 11-16 thru 11-18-78		390.15
5079	SVC Bookstore-#103 Accts. Rec./CETA/Class Size/Welding; textbooks for Class Size Welding Students		131.70
5080	Harlans-#265 Musical; fabric for musical		109.29

CHECK #	NAME	DESCRIPTION	AMOUNT
5081		SVC Educational Fund; #301 Student Tuition;	\$100,000.00
5082		Gibbons Bus Service--#266 Women's Intercollegiate Acct.; bus trip to DeKalb 10-21-78 140.00 & bus trip to Cicero 150.00	290.00
5083		Frieda McLuckie--#103 Accts. Rec./ISSC/Fall 1978; partial refund of Fall 1978 tuition - received ISSC Grant	152.00
5084		A. Lucile Vock--#320 Tuition Refunds; refund of 2 sem. hrs., Fall 1978	32.00
5085		Claire Holmberg--#266 Women's Intercollegiate; banquet for tennis & volleyball teams	190.10
5086		Laidlow Brothers--#352E Disadvantaged Grant; books	45.61
5087		Elkorn Corporation--#352E Disadvantaged Grant; December 1978 rent	300.00
5088		Marilyn Spangler--#376 College Van; reimbursement for gas pur- chase for van	7.00
5089		Gene Carden--#251 Athletic Expense/Palumbo; officiating basket- ball 11-27-78	25.00
5090		Don Morgan--#251 Athletic Expense/Palumbo; officiating basket- ball 11-27-78	25.00
5091		Claire Holmberg--#256 Cheerleader & Pon Pom Squad, #266 Women's Intercollegiate Act.; meal for 12 players & assistant coach & meal for cheerleaders	30.38
5092		The Sports Shop--#266 Women's Intercollegiate Act.; one knit shirt & numbers for BB team member	7.05
5093		Frank Palumbo--#251 Athletic Expense/Palumbo; scouting trip to Ill. Valley, Clinton & Ill. Central (basketball) & meals for BB team at Canton 11-21-78	45.10
5094P		Prentice Hall Inc.--#251 Athletic Expense/Palumbo; subscription to Coaches Clinic Magazine	26.79
5095		Charles Walrath--#254A Athletic Expense/Walrath; tolls & meals for wrestling matches at Sugar Gove, IL 11-22-78	39.84
5096		Lynn Krapfl--#103 Accts. Rec./Foundation; refund of Fall 1978 tuition - received Foundation Grant	217.60
5097		The Print Shop--#260 Student Activity Expense; 500 programs	19.48
5098		Salvadore Valdivia--#260 Student Activity Expense; perform nce in SVC Cafeteria 11-22-78	70.00
5099		Ken Kraft Wrestling Products--#254A Athletic Expense/Walrath; 13 pairs of wrestling shoes	200.45
5100		SVC Payroll Fund--#103 Accts. Rec./CETA - Class Size/Welding, 3,202.08 #330 Child Care, #352E Disadvantaged Grant & #354 CETA; pay- roll 11-30-78	
5101		Maureen Oester--#360 Miscellaneous; IGLP check rec'd, paid fees, check change 808.00	808.00
5102		Northwest Educational Cooperative--#103 Accts./Rec./Adult Basic Education/Grant E-957; program participation fees for Linda Delimata	12.50
5103		Linda Miller--#103 Accts. Rec./Adult Basic Education/Grant D-21 travel expenses to Rockford to study Public Aid continuing education program 11-9-78	16.50
5104		Rock River Self Help Enterprises--#335 Community Services; posters for the Christmas Concert	15.00

CHECK #	NAME	DESCRIPTION	AMOUNT
5105	Frank Palumbo-#251 Athletic Expense/Palumbo; fees for	scorer and timer of IVCC & Wright basketball games @ 5.00	\$ 20.00
5106	Pam Garcia-#266 Women's Intercollegiate Expense; officia-	ting one game 11-25-78; official scorer 3 games	35.00
5107	Gloria Verhulst-#266 Women's Intercollegiate Act.; officia-	ting 4 games 11-24 & 25-78; one game 11-27-78	100.00
5108	Crete LeFevre-#266 Women's Intercollegiate Act.; officiating	3 games 11-24 & 25-78; 1 game 11-27-78	80.00
5109	Claire Holmberg-#266 Women's Intercollegiate Act; meal for	basketball team 11-24-78	24.40
5110	Pat McBride-#266 Women's Intercollegiate Act.; officiating	4 basketball games 11-24 & 24-78	80.00
5111	Frank Pintozzi-#103 Accts. Rec./Adult Basic Education/ Grant	# 21; travel & meal 11-17-78 at Kishwaukee College	14.75
5112	Uniforms To You & Co.-#341 LPN Supplies; uniforms for nurs-	ing students	6,590.50
5113	Grand Stage Lighting Co.-#265 Musical; 20 lamps		344.11
5114	Crown Printing Co.-#265 Musical; 50 posters for musical		36.50
5115	Michael Heckman-#103 Accts. Rec./CETA; GED testings fees	@ 5.00 each	30.00
5116	Earl F. Slagle & Son, Inc.-#260 Student Activity Expense;	100 posters - "Lionel Hampton"	41.50
5117	Sharel Wolber-#103 Accts. Rec./ISSC; refund of Fall 1978	tuition - 224.00 paid previously by BOG, Billing #2 & 32.00	256.00
5118	Susan Rank-#103 Accts. Rec./ISSC; refund of Fall 1978 tuition	received ISSC Grant	96.00
5119	LaDonna Maldonado-#103 Accts. Rec./ISSC; refund of Fall 1978	tuition - received ISSC Grant - tuition previously deducted	144.00
5120	J. H. Schuler Co.-#372 Student Clubs/ADN Club; candy		957.09
5121	Marcy Shinault-#103 Accts. Rec./ISSC/Fall 1978; refund of	Fall 1978 tuition - received ISSC Grant	192.00
5122	Frank Cesarek-#251 Athletic Expense/Palumbo; official for	game 12-2-78	35.00
5123	John Stone-#251 Athletic Expense/Palumbo; official for BB	game 12-2-78	35.00
5124	University of Illinois-#254A Athletic Expense/Walrath;	entry fees for U of I Open Wrestling Tournament - 5.00 x 10	50.00
5125	Chuck Walrath-#254A Athletic Expense/Walrath; housing for	wrestling team of University of Illinois - motel will not	50.00
5126	Debbie Cook-#103 Accts. Rec./ISSC/Fall 1978; partial refund	of Fall 1978 tuition - received ISSC Grant - tuition pre-	304.00
5127	David Townsend-#103 Accts. Rec./ISSC/Fall 1978; refund of	Fall 1978 tuition - received ISSC Grant - tuition previously	192.00
5128	Carol Tibbels-#103 Accts. Rec./ISSC/Fall 1978; refund of Fall	1978 tuition (partial) - received ISSC Grant - previously	192.00

CHECK #	NAME	DESCRIPTION	AMOUNT
5129	Karen Meyer-#103 Accts. Rec./ISSC/Fall, 1978; refund of Fall, 1978 tuition - received ISSC Grant - BOG Billing #2 paid 64.00 - 128.00 previously paid in cash		\$ 192.00
5130	Janice Voeltzke-#103 Accts. Rec./ISSC/Fall 1978; refund of Fall, 1978 tuition - received ISSC Grant - tuition previously paid by IEOG Billing #1		96.00
5131	Dolly Klitz-#103 Accts. Rec./ISSC/Fall, 1978; refund of Fall, 1978 tuition - received ISSC Grant - tuition previously deducted from BOG Billing #2		192.00
5132	Ruth Adair-#103 Accts. Rec./ISSC/Fall, 1978; refund of Fall, 1978 tuition - received ISSC Grant - tuition previously paid by BOG Billing #2		208.00
5133	John Apple-#103 Accts. Rec./ISSC/Fall, 1978; refund of Fall, 1978 tuition - received ISSC Grant - tuition paid by BOG Billing #2		256.00
5134	So-Fro Fabrics-#265 Musical; 13 yards of fabric		46.56
5135	So-Fro Fabrics-#265 Musical; 34 1/4 yards of fabric		111.94

BAUK VALLEY COLLEGE

APPROVED BY

William E. Reigh

PRESIDENT

Lorna Keefer

SECRETARY

DATE

TREASURER'S REPORT

November 30, 1978

EDUCATIONAL FUND

Balance on Hand October 31, 1978 \$ 338,800.57

Receipts:

Taxes	20,119.48	
Charge-Back Revenue	136.20	
Federal Work Study	12,123.31	
Fall Tuition	100,000.00	
Transcript Fees	103.00	
Other Revenue	2,767.67	
Exp. Credits	<u>2,980.49</u>	<u>138,230.15</u>

Total Available \$ 477,030.72

Disbursements:

Expenses for November \$ 270,062.11

Balance on Hand November 30, 1978 \$ 206,968.61

BUILDING FUND

Balance on Hand October 31, 1978 \$ 77,607.96

Receipts:

Taxes	5,029.84	
Misc. Revenue	340.00	
Exp. Credits	<u>88.07</u>	<u>5,457.91</u>

Total Available \$ 83,065.87

Disbursements:

Expenses for November \$ 21,020.71

Balance on Hand November 30, 1978 \$ 62,045.16

SITE AND CONSTRUCTION FUND - Dixon National Bank

Balance on Hand October 31, 1978 \$ 9,476.48

Receipts:

Facilities Revenue	5,747.75	
Interest on Investments	<u>8,812.50</u>	<u>14,560.25</u>

Total Available \$ 24,036.73

Disbursements:

-0-

Balance on Hand November 30, 1978 \$ 24,036.73

SITE AND CONSTRUCTION FUND - Harris Trust

Balance on Hand October 31, 1978 \$ 6,811.09

Receipts:

-0-

Disbursements:

-0-

Balance on Hand November 30, 1978 \$ 6,811.09

BOND AND INTEREST FUND #1

Balance on Hand October 31, 1978 \$ 46,586.31

Receipts:

Investments	192,100.00	
Taxes	8,328.09	
Interest on Investments	225.00	
Loan from Educ. Fund	<u>8,000.00</u>	<u>208,653.09</u>

Total Available \$255,239.40

Disbursements:

-0-

Balance on Hand November 30, 1978 \$ 255,239.40

BOND AND INTEREST #2

Balance on Hand October 31, 1978 \$ 22,828.81

Receipts:

Taxes		<u>2,784.23</u>
-------	--	-----------------

Total Available \$ 25,613.04

Disbursements:

Investments		<u>22,000.00</u>
-------------	--	------------------

Balance on Hand November 30, 1978 \$ 3 613.04

WORKING CASH FUND

Balance on Hand October 31, 1978 \$ 16,282.20

Receipts:

Interest on Investments 7,209.29

Total Available \$ 23,491.49

Disbursements:

Investments \$ 7,209.29

Balance on Hand November 30, 1978 \$ 16,282.20

INSURANCE FUND

Balance on Hand October 31, 1978 \$ 9,616.55

Receipts:

Taxes 285.67

Total Available \$ 9,902.22

Disbursements:

-0-

Balance on Hand November 30, 1978 \$ 9,902.22

* * * * *

FUNDS INVESTED

Certificate of Deposit	B & I #1	11-28-78	\$ 125,000.00
Certificate of Deposit	S & C	11-23-78	103,698.63
Certificate of Deposit	Working Cash	12-10-78	206,421.72
Time-Open Deposit	B & I #2		96,936.68
Time-Open Deposit	S & C	5-28-79	100,000.00
Time-Open Deposit	B & I #1		888.91
Certificate of Deposit	S & C	5-19-79	50,000.00
Certificate of Deposit	B & I #1		45,000.00
Certificate of Deposit	S & C	2-17-79	385,538.11
Time-Open Deposit	S & C	11-28-79	100,000.00
Certificate of Deposit	Working Cash	1-10-79	246,459.06
Certificate of Deposit	Working Cash	2-10-79	<u>270,638.26</u>

TOTAL INVESTED \$1,730,581.37

SASK VALLEY COLLEGE

STUDENT LOAN FUND

October 31, 1978

BALANCE SHEET

ASSETS:

Cash in Bank #1.	\$1,212.04
Cash in Bank #2.	136.51
Notes Receivable #1.	1,692.00
Notes Receivable #2.	1,100.00
	<u>\$4,140.55</u>

LIABILITIES AND NET WORTH:

Fund Equity #1	\$2,838.27	
Net Profit #1.	<u>65.77</u>	\$2,904.04
Fund Equity #2	\$1,392.18	
Net Loss #2	<u>(155.67)</u>	1,236.51
		<u>\$4,140.55</u>

PROFIT AND LOSS

INCOME:

Interest Income #1.	\$ 54.27	
Bad Debts Repaid #1	<u>182.00</u>	\$ 236.27
Interest Income #2.	\$ 14.33	
Bad Debts Repaid #2	<u>130.00</u>	144.33

EXPENSES:

Bad Debts #1	\$ 170.50
Bad Debts #2	300.00
NET PROFIT #1.	<u>\$ 65.77</u>
NET LOSS #2	<u>\$(155.67)</u>

SAUK VALLEY COLLEGE

STUDENT LOAN FUND

November 30, 1978

B A L A N C E S H E E T

ASSETS:

Cash in Bank #1.....	\$1,060.15
Cash in Bank #2.....	99.90
Notes Receivable #1.....	1,851.00
Notes Receivable #2.....	1,140.00
	<u>\$4,151.05</u>

LIABILITIES AND NET WORTH:

Fund Equity #1.....	\$2,838.27	
Net Profit #1.....	72.88	\$2,911.15
Fund Equity #2.....	\$1,392.18	
Net Loss #2.....	(152.28)	1,239.90
		<u>\$4,151.05</u>

P R O F I T A N D L O S S

INCOME:

Interest Income #1.....	\$ 61.38	
Bad Debts Repaid #1.....	182.00	\$ 243.38
Interest Income #2.....	\$ 17.72	
Bad Debts Repaid #2.....	130.00	\$ 147.72

EXPENSES:

Bad Debts #1.....	\$ 170.50
Bad Debts #2.....	300.00

NET PROFIT #1.....	<u>\$ 72.88</u>
--------------------	-----------------

NET LOSS #2.....	<u>\$ (152.28)</u>
------------------	--------------------

SAUK VALLEY COLLEGE

E.O.G. WORK STUDY FUNDS

Period Ending 10/31/78

B A L A N C E S H E E T

Cash on Hand.....	\$ 17,599.58	
Workstudy Awards Receivable from Fed. Gov. 1978-79....	102,135.00	
Workstudy Awards Capital 1978-79.....		147,135.00
Workstudy Awards Paid 1978-79.....	40,941.89	
E.O.G. Funds Receivable from Fed. Gov. 1978-79.....	27,289.00	
Initial E.O.G. Awards Capital 1978-79.....		17,346.00
Initial E.O.G. Awards Paid 1978-79.....	-0-	
Renewal E.O.G. Awards Capital 1978-79.....		25,193.00
Renewal E.O.G. Awards Paid 1978-79.....	-0-	
Basic E.O.G. Awards Rec. from Fed. Gov. 1978-79.....	92,440.00	
Basic E.O.G. Awards Capital 1978-79.....		152,440.00
Basic E.O.G. Awards Paid 1978-79.....	61,309.61	
Inactive Federal Grants.....	398.92	
	<u>\$342,114.00</u>	<u>\$342,114.00</u>

EDUCATIONAL FUND

Account	Total Expenditures	To Date	Prev. Mo. To Date	This Mo.	Budget	Unexpended	Unencumbered
DIV OF BUSINESS SALARIES	31,815.79	31,815.79	26,513.16	5,302.63	101,608.00	69,792.21	69,792.21
DIV OF BUS CONTR SERV	2,882.00	2,882.00	2,837.00	45.00	3,800.00	918.00	918.00
DIV OF BUS SUPPLIES	1,319.34	1,319.34	1,124.02	195.32	3,850.00	2,530.66	2,530.66
DIV OF BUS CONF & MEETINGS	209.47	209.47	43.20	166.27	1,148.00	938.53	938.53
FOOD SERVICES CONTR SERV	75.00	75.00	75.00	.00	350.00	275.00	275.00
FOOD SERV SUPPLIES	90.50	90.50	89.09	1.41	949.00	858.50	858.50
FOOD SERV CONF & MEETINGS	69.60	69.60	39.40	30.20	212.00	142.60	142.60
DIV OF AGRIC SALARIES	4,493.70	4,493.70	3,744.75	748.95	17,975.00	13,481.30	13,481.30
DIV OF AGRIC CONTR SERV	.00	.00	.00	.00	165.00	165.00	165.00
DIV OF AGRIC SUPPLIES	538.18	538.18	447.62	90.56	1,390.00	851.82	851.82
DIV OF AGRIC CONF & MEETINGS	.00	.00	.00	.00	468.00	468.00	468.00
DIV OF INDUS ED SALARIES	25,668.66	25,668.66	21,390.55	4,278.11	103,400.00	77,731.34	77,731.34
DIV OF INDUS ED CONTR SERV	280.00	280.00	280.00	.00	1,250.00	970.00	970.00
DIV OF INDUS ED SUPPLIES	7,277.21	7,277.21	6,521.67	755.54	12,728.00	5,450.79	5,450.79
DIV OF INDUS ED CONF & MEETINGS	753.42	753.42	753.42	.00	1,496.00	742.58	742.58
COSMETOLOGY CONTR SERV	10,872.63	10,872.63	9,817.08	1,055.60	23,256.00	12,383.32	12,383.32
COSMETOL SUPPLIES	.00	.00	.00	.00	100.00	100.00	100.00
COSMETOL CONF & MEETINGS	.00	.00	.00	.00	42.00	42.00	42.00
HUMAN SERV ADMIN SALARIES	8,088.30	8,088.30	7,279.47	808.83	14,412.00	11,323.70	11,323.70
HUMAN SERV CONTR SERV	.00	.00	.00	.00	350.00	350.00	350.00
HUMAN SERV SUPPLIES	649.75	649.75	595.56	54.19	1,200.00	550.25	550.25
HUMAN SERV CONF & MEETINGS	122.22	122.22	114.02	8.20	467.00	344.78	344.78
DIV OF SOC SCI SALARIES	24,222.78	24,222.78	20,185.65	4,037.13	86,225.00	62,002.22	62,002.22
DIV OF SOC SCI SUPPLIES	594.35	594.35	534.45	59.90	1,942.00	1,347.65	1,347.65
DIV OF SOC SCI CONF & MEETINGS	675.60	675.60	596.58	79.02	952.00	276.40	276.40
CRIMINAL JUS INSTR SALARIES	9,162.48	9,162.48	7,635.40	1,527.08	31,050.00	21,887.52	21,887.52
CRIM JUS CONTR SERV	.00	.00	.00	.00	200.00	200.00	200.00
CRIM JUS SUPPLIES	345.41	345.41	332.95	12.46	1,893.00	1,547.59	1,547.59
CRIM JUS CONF & MEETINGS	.00	.00	.00	.00	850.00	850.00	850.00
LIBRARY TECH SUPPLIES	.00	.00	.00	.00	250.00	250.00	250.00
DIV OF FIRE SCI CONTR SERV	28.00	28.00	28.00	.00	100.00	72.00	72.00
DIV OF FIRE SCI SUPPLIES	1,264.50	1,264.50	1,260.00	4.50	1,575.00	310.50	310.50
DIV OF FIRE SCI CONF & MEETINGS	.00	.00	.00	.00	340.00	340.00	340.00
DIV OF HUMAN. SALARIES	41,993.52	41,993.52	34,994.60	6,998.92	143,725.00	101,731.48	101,731.48
DIV OF HUMAN. CONTR SERV	326.00	326.00	.00	326.00	525.00	199.00	199.00
DIV OF HUMAN. SUPPLIES	447.60	447.60	337.56	110.04	2,154.00	1,706.40	1,706.40
DIV OF HUMAN. CONF & MEETINGS	584.85	584.85	367.85	217.00	1,136.00	551.15	551.15

Account	Total Expenditures	To Date	Prev. Mo. To Date	This Mo.	Budget	Unexpended	Unencumbered
ART DEPT SALARIES	3931.20	3931.20	3276.00	655.20	15,725.00	11,793.80	11,793.80
ART DEPT CONTR SERV		.00		.00	346.00	346.00	346.00
ART DEPT SUPPLIES	676.69	676.69	583.76	92.93	1,527.00	850.31	850.31
ART DEPT CONF & MEETINGS	45.00	45.00	45.00	.00	88.00	43.00	43.00
MUSIC DEPT SALARIES	7,918.68	7,918.68	6,598.90	1,319.78	31,675.00	23,756.32	23,756.32
MUSIC DEPT CONTR SERV	128.00	128.00	90.00	38.00	735.00	607.00	607.00
MUSIC DEPTTSUPPLIES	834.28	834.28	606.56	227.72	1,384.00	549.72	549.72
MUSIC DEPT CONF & MEETINGS	144.65	144.65	144.65	.00	177.00	32.35	32.35
DIV OF MATH SCI SALARIES	36,524.76	36,524.76	30,437.30	6,087.46	127,625.00	91,100.24	91,100.24
DIV OF MATH SCI CONTR SERV	455.00	455.00	455.00	.00	2,735.00	2,280.00	2,280.00
DIV OF MATH SCI SUPPLIES	4,377.42	4,377.42	4,158.80	218.62	8,573.00	4,195.58	4,195.58
DIV OF MATH SCI CONF & MEETINGS		.00		.00	704.00	704.00	704.00
MED LAB TECH SALARIES	11,224.96	11,224.96	9,933.30	1,291.66	31,000.00	19,775.04	19,775.04
MED LAB TECH CONTR SERV	27.66	27.66	27.66	.00	400.00	372.34	372.34
MED LAB TECH SUPPLIES	4,608.31	4,608.31	4,425.83	182.48	7,856.00	3,247.69	3,247.69
MED LAB TECH CONF & MEETINGS	114.60	114.60	114.60	.00	349.00	234.40	234.40
ADN ADMIN SALARIES	8,749.98	8,749.98	7,812.48	937.50	20,000.00	11,250.02	11,250.02
ADN INSTR SALARIES	13,312.50	13,312.50	11,093.75	2,218.75	67,175.00	53,862.50	53,862.50
ADN OFC SALARIES	3,216.76	3,216.76	2,919.47	297.29	7,856.00	4,639.24	4,639.24
ADN CONTR SERV	20.00	20.00	20.00	.00	110.00	90.00	90.00
ADN SUPPLIES	784.26	784.26	702.82	81.44	1,938.00	1,153.74	1,153.74
ADN CONF & MEETINGS	171.00	171.00	157.35	13.65	1,505.00	1,334.00	1,334.00
LPN SALARIES	23,987.08	23,987.08	21,310.28	2,676.80	62,520.00	38,532.92	38,532.92
LPN CONTR SERV	25.00	25.00	25.00	.00	100.00	75.00	75.00
LPN SUPPLIES	878.72	878.72	840.63	38.09	1,308.00	429.28	429.28
LPN CONF & MEETINGS	154.84	154.84	154.84	.00	701.00	546.16	546.16
RAD TECH SALARIES	6,900.00	6,900.00	6,210.00	690.00	16,560.00	9,660.00	9,660.00
RAD TECH CONTR SERV		.00		.00	900.00	900.00	900.00
RAD TECH SUPPLIES	488.79	488.79	194.14	294.65	2,325.00	2,336.21	2,336.21
RAD TECH CONF & MEETINGS	434.71	434.71	335.11	99.60	1,169.00	734.29	734.29
DIV OF PHYS ED SALARIES	9,643.68	9,643.68	8,036.40	1,607.28	38,575.00	28,931.32	28,931.32
DIV OF PHYS ED SUPPLIES	756.13	756.13	753.67	2.46	2,159.00	1,402.87	1,402.87
DIV OF PHYS ED CONF & MEETINGS	64.55	64.55	41.75	22.80	334.00	269.45	269.45
NURSE AID CONTR SERV		.00		.00	30.00	30.00	30.00
NURSE AID SUPPLIES		.00		.00	35.00	35.00	35.00
PART TIME OVERLOAD/BUNCH	2,944.00	2,944.00	2,500.00	444.00	20,025.00	17,081.00	17,081.00
PART TIME OVERLOAD/SAGMOE	2,544.00	2,544.00	2,544.00	.00	3,800.00	1,256.00	1,256.00

Account	Total Disbursements	To Date	Prev. Mo. To Date	This Mo.	Budget	Unexpended	Unencumbered
PART TIME OVERLOAD/STRICKLAND	26792.50	26792.50	25497.50	1,295.00	103,000.00	76,207.50	76,207.50
SUMMER SESSION SALARIES	73,928.00	73,928.00	73,928.00	.00	80,775.00	6,847.00	6,847.00
INSTR SECR SALARIES	8,532.26	8,532.26	7,739.19	793.07	27,542.00	19,009.74	19,009.74
WORKROOM CONTR SERV	1,314.25	1,314.25	1,268.15	46.10	1,150.00	164.25 CR	164.25 CR
UNALLOCATED INSTR CONTR SERV	547.82	547.82	517.60	30.22	1,750.00	1,202.18	1,202.18
FACULTY IN SERVICE TRAINING	45.90	45.90	45.90	.00	5,000.00	4,954.10	4,954.10
WORKROOM SUPPLIES	592.06	592.06	611.77	19.71 CR	750.00	157.94	157.94
FACULTY OFFICE SUPPLIES	240.23	240.23	189.90	50.33	800.00	559.77	559.77
INSTITUTIONAL COMMITTEES SUPPLIES	21.37	21.37	21.07	.30	200.00	178.63	178.63
TUITION REIMBURSEMENT	1,466.33	1,466.33	1,466.33	.00	7,500.00	6,033.67	6,033.67
ARTS & SCI DEAN SALARY	11,250.00	11,250.00	10,125.00	1,125.00	27,000.00	15,750.00	15,750.00
ASST DEAN SALARY	9,404.12	9,404.12	8,463.71	940.41	22,570.00	13,165.88	13,165.88
ARTS & SCI SECR SALARY	3,569.12	3,569.12	3,212.21	356.91	8,566.00	4,996.88	4,996.88
ARTS & SCI FED WORK STUDY	7,973.77	7,973.77	6,598.33	1,375.44	22,577.00	14,603.23	14,603.23
STUDENT TUTORS	1,149.00	1,149.00	883.50	265.50	3,300.00	2,151.00	2,151.00
ARTS & SCI SUPPLIES /DEAN	508.47	508.47	249.41	259.06	1,125.00	616.53	616.53
ASST DEAN SUPPLIES	170.07	170.07	143.84	26.23	400.00	229.93	229.93
DEAN CONF & MEETINGS	119.56	119.56	37.99	81.57	612.00	492.44	492.44
ASST DEAN CONF & MEETINGS	175.00	175.00	25.00	150.00	306.00	131.00	131.00
CAREER ED DEAN SALARY	7,797.06	7,797.06	7,797.06	.00	26,500.00	18,702.94	18,702.94
CAREER ED ASST DEAN SALARY	8,833.30	8,833.30	7,874.97	958.33	20,000.00	11,166.70	11,166.70
CAREER ED SECR SALARY	3,846.22	3,846.22	3,461.60	384.62	9,231.00	5,384.78	5,384.78
CAREER ED FED WORK STUDY	4,869.70	4,869.70	4,152.35	717.35	14,380.00	9,510.30	9,510.30
SVC STUDENT EMPLOYEES	1,973.28	1,973.28	1,704.88	268.40	6,000.00	4,026.72	4,026.72
CAREER ED DEAN SUPPLIES	417.33	417.33	368.82	48.51	1,800.00	1,382.67	1,382.67
ACTING ASST DEAN SUPPLIES	187.21	187.21	154.81	32.40	750.00	562.79	562.79
DEAN CONF & MEETINGS	654.01	654.01	459.56	194.45	1,275.00	620.99	620.99
ACTING ASST DEAN CONF & MEETINGS	201.90	201.90	44.00	157.90	382.00	180.10	180.10
COMMUNITY ED ADMIN SALARIES	9,100.00	9,100.00	8,190.00	910.00	21,840.00	12,740.00	12,740.00
COMM ED INSTR SALARIES	17,879.50	17,879.50	16,242.00	1,637.50	68,000.00	50,120.50	50,120.50
COMM SERV COORDINATORS	540.00	540.00	540.00	.00	6,000.00	5,460.00	5,460.00
COMM ED SECR SALARIES	2,625.28	2,625.28	2,327.99	297.29	7,135.00	4,509.72	4,509.72
COMM ED CONTR SERV	90.00	90.00	90.00	.00	3,000.00	2,910.00	2,910.00
COMM ED SUPPLIES	941.05	941.05	742.11	198.94	2,000.00	1,058.95	1,058.95
COMM ED CONF & MEETINGS	447.70	447.70	345.14	102.56	1,530.00	1,082.30	1,082.30
ACADEM SKILLS SALARIES	7,593.72	7,593.72	6,328.10	1,265.62	45,100.00	37,506.28	37,506.28
ACADEM SKILLS FED WORK STUDY	1,183.25	1,183.25	1,009.67	173.58	3,200.00	2,016.75	2,016.75

Account	Total Expenditures	To Date	Prev. Mo. To Date	This Mo.	Budget	Unexpended	Unencumbered
ACADEM SKILLS CONTR SERV	112.75	112.75	97.75	15.00	400.00	287.25	287.25
ACADEM SKILLS SUPPLIES	2694.11	2694.11	2007.05	687.06	3000.00	305.89	305.89
ACADEM SKILLS CONF & MEETINGS	176.00	176.00	25.00	151.00	255.00	79.00	79.00
HONORSPPROGRAM CONTR SERV		.00		.00	200.00	200.00	200.00
HONORS PROGRAM SUPPLIES		.00		.00	200.00	200.00	200.00
HONORS PROGRAM CONF & MEETINGS	57.80	57.80		57.80	510.00	452.20	452.20
LRC ADMIN SALARIES	8333.30	8333.30	7499.97	833.33	20000.00	11666.70	11666.70
LEARNING RES PROF SALARIES	11212.44	11212.44	9343.70	1868.74	44850.00	33637.56	33637.56
LRC SECR SALARIES	9771.12	9771.12	8794.01	977.11	23451.00	13679.88	13679.88
LRC FED WORK STUDY	3816.75	3816.75	3238.37	578.38	9300.00	5483.25	5483.25
LRC CONTR SERV	878.14	878.14	561.75	316.39	3500.00	2621.86	2621.86
LIBRARY SUPPLIES	5456.96	5456.96	5236.21	220.75	8300.00	2843.04	2843.04
A V SUPPLIES	2461.00	2461.00	2341.44	119.56	6400.00	3939.00	3939.00
XEROX SUPPLIES	1907.16	1907.16	673.87 CR	1,233.29	2000.00	3907.16	3907.16
LIBRARY BOOKS	10411.61	10411.61	9135.17	1,276.44	25000.00	14588.39	14588.39
LRC CONF & MEETINGS	175.88	175.88	284.76	108.88 CR	510.00	334.12	334.12
ADM & REC PROF SALARIES	7250.00	7250.00	6525.00	725.00	10150.00	2900.00	2900.00
ADM & REC SECR SALARIES	12095.51	12095.51	10886.65	1,208.86	29013.00	16917.49	16917.49
ADM & REC FED WORK STUDY	1892.12	1892.12	1755.64	136.48	4500.00	2607.88	2607.88
ADM & REC CONTR SERV	415.00	415.00	415.00	.00	390.00	25.00 CR	25.00 CR
ADM & REC SUPPLIES	750.91	750.91	649.37	101.54	6000.00	5249.09	5249.09
ADM & REC CONF & MEETINGS		.00		.00	425.00	425.00	425.00
COUNSELING SALARIES	25293.97	25293.97	22484.85	2809.12	67420.00	42126.03	42126.03
COUNSELING SECR SALARIES	2680.16	2680.16	2382.87	297.29	7135.00	4454.84	4454.84
HEALTH SERV SUPPLIES	372.80	372.80		372.80	300.00	72.80 CR	72.80 CR
FIN AIDS PROF SALARIES	8854.12	8854.12	7968.71	885.41	21250.00	12395.88	12395.88
FIN AIDS SECR SALARIES	3234.52	3234.52	2911.07	323.45	7763.00	4528.48	4528.48
STUDENT SERV ADMIN SALARIES	10750.00	10750.00	9675.00	1,075.00	25800.00	15050.00	15050.00
STUDENT SERV SECR SALARIES	3400.80	3400.80	3015.97	384.83	9236.00	5835.20	5835.20
STUDENT SERV FED WORK STUDY	18840.01	18840.01	16418.00	2422.01	40035.00	21194.99	21194.99
COACHING SALARIES	2087.50	2087.50	2087.50	.00	9300.00	7212.50	7212.50
STUDENT SERV CONTR SERV	132.33	132.33	132.33	.00	300.00	167.67	167.67
STUDENT SERV SUPPLIES	2280.83	2280.83	1711.75	569.08	9000.00	6719.17	6719.17
STUDENT RECRUITMENT		.00		.00	2000.00	2000.00	2000.00
COMMENCEMENT	274.59	274.59	270.37	4.22	5000.00	4725.41	4725.41
STUDENT SERV CONF & MEETINGS	1064.03	1064.03	615.36	448.67	3655.00	2590.97	2590.97
VETERANS GRANT PROF SALARIES	6166.62	6166.62	5549.96	616.66	14800.00	8633.38	8633.38

Account	Total Expenditures	To Date	Prev. No. To Date	This No.	Budget	Unexpended	Unencumbered
VETERANS SECR SALARY	2712.50	2712.50	2441.25	271.25	6510.00	3797.50	3797.50
VETERANS GRANT SUPPLIES	503.33	503.33	471.13	32.20	2500.00	1996.67	1996.67
VETERANS GRANT CONF & MEETINGS	323.75	323.75	267.05	56.70	1020.00	696.25	696.25
PUB SERV SALARIES		.00		.00	3500.00	3500.00	3500.00
PUB SERV CONTR SERV		.00		.00	500.00	500.00	500.00
PUB SERV SUPPLIES		.00		.00	500.00	500.00	500.00
SERVICE STAFF SALARIES	106902.64	106902.64	95890.32	11012.32	276410.00	164507.36	164507.36
MAINT FED WORK STUDY BOYS	14069.86	14069.86	12569.22	1500.64	74493.00	60423.14	60423.14
MATRONS FED WORK STUDY	5353.36	5353.36	5101.73	251.63		5353.36 CR	5353.36 CR
TELEPHONE	8948.47	8948.47	7174.97	1773.50	24000.00	15051.53	15051.53
PRESIDENTS SALARY	14583.30	14583.30	13124.97	1458.33	35000.00	20416.70	20416.70
PRESIDENTS SECR	4811.22	4811.22	4330.10	481.12	11797.00	6985.78	6985.78
PRES FED WORK STUDY	1872.26	1872.26	1645.63	226.58	2465.00	592.74	592.74
PRES OFC CONTR SERV		.00		.00	100.00	100.00	100.00
PRES OFC SUPPLIES	1608.35	1608.35	1269.16	339.19	3000.00	1391.65	1391.65
PRES OFC CONF & MEETINGS	1063.94	1063.94	890.38	173.56	2125.00	1061.06	1061.06
SPECIAL AFFAIRS	511.56	511.56	511.56	.00	1500.00	988.44	988.44
BUS OFC ADMIN SALARIES	13416.62	13416.62	12074.96	1341.66	32200.00	18783.38	18783.38
BUS OFC PROF SALARIES	8958.30	8958.30	8062.47	895.83	21500.00	12541.70	12541.70
BUS OFC SECR SALARIES	19176.15	19176.15	17479.40	1696.75	50775.00	31598.85	31598.85
BUS OFC FED WORK STUDY	3711.41	3711.41	3434.47	276.94	9900.00	6188.59	6188.59
BUS OFC CONTR SERV	2674.28	2674.23	2674.23	.00	3575.00	900.72	900.72
BUS OFC SUPPLIES	1902.02 ◊	1902.02 CR	1526.98 ◊	375.04 CR	7500.00	4402.02	4402.02
BUS OFC CONF & MEETINGS	323.59	323.59	190.80	132.79	1700.00	1376.41	1376.41
PUB RELA ADMIN SALARIES	8666.62	8666.62	7799.96	866.66	20800.00	12133.38	12133.38
PUB RELA SECR SALARIES	584.10	584.10	551.10	33.00	6505.00	5920.90	5920.90
PUB RELA SUPPLIES & ADS	11319.55	11319.55	10791.06	528.49	43000.00	31680.45	31680.45
PUB RELA CONF & MEETINGS	194.85	194.85	194.85	.00	638.00	443.15	443.15
AUDITING & LEGAL	7494.68	7494.68	7494.68	.00	13000.00	5505.32	5505.32
ELECTIONS & OTHER	3127.19	3127.19	3113.57	13.62	5000.00	1872.81	1872.81
BOARD CONF & MEETINGS	324.93	324.93	324.93	.00	1700.00	1375.07	1375.07
INSTITUTIONAL SECR SALARIES	3170.80	3170.80	2853.72	317.08	7610.00	4439.20	4439.20
GROUP MEDICAL & LIFE INS	62137.88	62137.83	54265.14	7872.74	132900.00	70762.12	70762.12
UNEMPLOYMENT COMPINS	1428.40	1428.40	1428.40	.00	14000.00	12571.60	12571.60
UNALLOCATED INSITU CONTR SERV	563.73	563.73	548.11	15.62	2100.00	1536.27	1536.27
FACULTY ASSN SUPPLIES	164.93	164.93	134.87	30.06	200.00	35.07	35.07
POSTAGE	7880.05	7880.05	3837.71	4042.34	27300.00	14419.95	14419.95

Account	Total Expenditures	To Date	Prev. Mo. To Date	This Mo.	Budget	Unexpended	Unencumbered
PUBLICATIONS & DUES	2603.00	2603.00	2603.00	.00	6,200.00	3597.00	3597.00
ADVERTISING	308.76	308.76	308.76	.00	550.00	241.24	241.24
RECRUITMENT	787.34	787.34	720.31	67.03	2000.00	1,212.66	1,212.66
GENERAL INSURANCE	31893.20	31893.20	31891.97	1.23	32000.00	106.80	106.80
CAPITAL OUTLAY	1688.90	1688.90	1688.90	.00	26,476.00	24,787.10	24,787.10
STATE VOC EQUIPMENT	3767.24	3767.24	3207.67	559.57		3,767.24 CR	3,767.24 CR
TUITION CHARGE BACK	6082.82	6082.82	4007.26	2075.56	15,000.00	8917.18	8917.18
INSTITUTIONAL RES SUPPLIES	36.28	36.28	27.98	8.30	1,000.00	963.72	963.72
INSTITU RES CONF & MEETINGS	56.30	56.30	56.30	.00	425.00	368.70	368.70
DATA PROC PROF SALARIES	21999.56	21999.56	19799.61	2199.95	51,316.00	29,316.44	29,316.44
DATA PROC NON ACADEM SALARIES	3049.52	3049.52	2744.57	304.95	7,319.00	4,269.48	4,269.48
DATA PROC FED WORK STUDY	1355.49	1355.49	1270.69	84.80	3,800.00	2,444.51	2,444.51
DATA PROC CONTR SERV	4672.65	4672.65	4557.65	115.00	10,908.00	1,235.35	1,235.35
DATA PROC SUPPLIES	2472.24	2472.24	1992.33	479.91	3,600.00	1,127.76	1,127.76
DATA PROC CONF & MEETINGS	31.30	31.30	22.60	8.70	850.00	818.70	818.70
DATA PROC EQUIP RENTAL	17810.27	17810.27	14642.19	3168.08	44,620.00	26,809.73	26,809.73
GRANTS OFC SUPPLIES	226.72	226.72	225.01	1.71	2,000.00	1,773.28	1,773.28
GRANTS OFC CONF & MEETINGS	241.68	241.68	99.00	142.68	850.00	608.32	608.32
AFFIRM ACTION CONTR SERV	25.05	25.05		25.05	250.00	224.95	224.95
AFFIRM ACTION SUPPLIES	84.14	84.14	69.04	15.10	400.00	315.86	315.86
AFFIRM ACTION CONF & MEETINGS	95.85	95.85	95.85	.00	850.00	754.15	754.15
CONTINGENCIES		.00		.00	21,775.00	21,775.00	21,775.00
	1,120,373.87	1,120,373.87	997,136.82	123,236.89	3,102,963.00	1,982,589.13	1,982,589.13

BUILDING FUND

Account	Total Expenditures	To Date	Prev. Mo. To Date	This Mo.	Budget	Unexpended	Unencumbered
BLDG & MAINT SUPPLIES	5,198.21	5,198.21	4,625.09	573.12	52,000.00	46,801.79	46,801.79
MAINT CONF & MEETINGS	244.65	244.65	240.45	4.20	638.00	393.35	393.35
SERVICE EQUIPMENT		.00		.00	8,500.00	8,500.00	8,500.00
MAINT CONTR SERV	10,244.41	10,244.41	9,469.40	775.01	29,700.00	19,455.59	19,455.59
GAS	28,887.61	28,887.61	21,612.56	7,275.05	93,060.00	64,172.39	64,172.39
ELECTRIC	34,239.88	34,239.88	34,239.88	.00	112,000.00	77,760.12	77,760.12
RENTAL CHARGES	513.00	513.00	477.00	36.00	500.00	13.00 CR	13.00 CR
CONTINGENCIES		.00		.00	15,000.00	15,000.00	15,000.00
	79,327.76 T	79,327.76 T	70,664.38 T	8,663.38 T	311,398.00 T	232,070.24 T	232,070.24 T

SITE AND CONSTRUCTION FUND

SITE IMPROVEMENT	66,645.85	66,645.85	66,645.85	.00	25,000.00	41,645.85 CR	41,645.85 CR
NEW BLDGS & ADDITIONS		.00		.00	25,000.00	25,000.00	25,000.00
BUILDING IMPROVEMENTS		.00		.00	75,000.00	75,000.00	75,000.00
BLDG REPAIRS	1,777.00	1,777.00	1,585.00	192.00		1,777.00 CR	1,777.00 CR
BLDG REPAIRS-LITTLE THEATRE	2,239.31	2,239.31	2,239.31	.00		2,239.31 CR	2,239.31 CR
BLDG REPAIRS-DEMAND CONTROLLERS	756.00	756.00		756.00		756.00 CR	756.00 CR
OFFICE EQUIPMENT		.00		.00	10,000.00	10,000.00	10,000.00
INSTR EQUIPMENT		.00		.00	10,000.00	10,000.00	10,000.00
SERVICE EQUIPMENT		.00		.00	10,000.00	10,000.00	10,000.00
OTHER CAPITAL OUTLAY		.00		.00	20,000.00	20,000.00	20,000.00
	71,418.16 T	71,418.16 T	70,470.16 T	948.00 T	175,000.00 T	103,581.84 T	103,581.84 T

BOND & INTEREST #1

DEBT PRINCIPAL RETIREMENT	225,000.00	225,000.00		225,000.00	225,000.00	.00	.00
INTEREST	35,325.00	35,325.00		35,325.00	66,600.00	31,275.00	31,275.00
OTHER CHARGES	138.12	138.12		138.12	500.00	361.88	361.88
	260,463.12 T	260,463.12 T	.00 T	260,463.12 T	292,100.00 T	31,636.88 T	31,636.88 T

BOND & INTEREST #2

Account	Total Expenditures	To Date	Prev. Mo. To Date	This Mo.	Budget	Unexpended	Unencumbered
DEBT PRINCIPAL RETIREMENT		.00		.00	90.000.00	90.000.00	90.000.00
INTEREST		.00		.00	4.800.00	4.800.00	4.800.00
OTHER CHARGES		.00		.00	100.00	100.00	100.00
	.00 T	.00 T	.00 T	.00 T	94.900.00 T	94.900.00 T	94.900.00 T

WORKING CASH FUND

MISC EXPENSES

	.00		.00	250.00	250.00	250.00
	.00 T	.00 T	.00 T	250.00 T	250.00 T	250.00 T

INSURANCE FUND

INSURANCE EXPENSES

	.00		.00	12.000.00	12.000.00	12.000.00
	.00 T	.00 T	.00 T	12.000.00 T	12.000.00 T	12.000.00 T

REVENUE REPORT

EDUCATIONAL FUND

Account	Total Receipts	To DATE	Prev. No. To DATE	This Mo.	Budget	Unexpended	Unencumbered
CURRENT TAXES	594040.52	594040.52	576903.11	17137.41	733,788.00	134,747.48 CR	134,747.48 CR
BACK TAXES	2,982.07	2,982.07		2,982.07			
CHARGE BACK REVENUE	2,790.60	2,790.60	2,654.40	136.20	12,000.00	9,209.40	9,209.40
SUMMER STATE APPORT	288,847.00	288,847.00	288,847.00	.00	100,844.00	188,003.00 CR	188,003.00 CR
FALL STATE APPORT		.00		.00	578,295.00	578,295.00	578,295.00
SPRING STATE APPORT	167.86 <	167.86 CR	167.86 <	.00	517,973.00	518,140.86	518,140.86
ICCB EQUALIZATION GRANT	179.12	179.12	179.12	.00	1,200.00	1,020.88	1,020.88
VOC ED REG REIMB	12,775.00	12,775.00	12,775.00	.00	95,000.00	82,225.00	82,225.00
VOC ED EQUIP REIMB	1,017.00 <	1,017.00 CR	1,017.00 <	.00	5,188.00	6,205.00	6,205.00
STATE WORK STUDY		.00		.00	12,500.00	12,500.00	12,500.00
OTHER ILLINOIS REV	597.26 <	597.26 CR	597.26 <	.00	8,817.00	9,414.26	9,414.26
HEW TITLE 2		.00		.00	3,800.00	3,800.00	3,800.00
VETERANS COST OF INSTR PAYMENT		.00		.00	14,737.00	14,737.00	14,737.00
FEDERAL WORK STUDY	48,043.11	48,043.11	35,919.80	12,123.31	141,377.00	93,333.89	93,333.89
VETERANS REPORTING FEE		.00		.00	8,500.00	8,500.00	8,500.00
SUMMER TUITION	66,943.88	66,943.88	66,943.88	.00	66,830.00	113.88 CR	113.88 CR
FALL TUITION	175,000.00	175,000.00	75,000.00	100,000.00	367,101.00	192,101.00	192,101.00
SPRING TUITION		.00		.00	327,778.00	327,778.00	327,778.00
GRADUATION FEES		.00		.00	600.00	600.00	600.00
TRANSCRIPT FEES	476.50	476.50	373.50	103.00	700.00	223.50	223.50
PUB SERVICES INCOME		.00		.00	4,500.00	4,500.00	4,500.00
INTEREST ON INVESTMENTS		.00		.00	100.00	100.00	100.00
OTHER REVENUE	2,948.52	2,948.52	180.85	2,767.67	100.00	2,848.52 CR	2,848.52 CR

1193244.20 T 1193244.20 T 1057994.54 T 135249.66 T 3001728.00 T 1808483.80 T 1808483.80 T

BUILDING FUND

CURRENT TAXES	148,509.34	148,509.34	144,225.01	4,284.33	183,447.00	34,937.66	34,937.66
BACK TAXES	745.51	745.51		745.51		745.51 CR	745.51 CR
INTEREST ON INVESTMENTS		.00		.00	100.00	100.00	100.00
MISC REVENUE	529.00	529.00	189.00	340.00	900.00	371.00	371.00

144783.85 T 144783.85 T 144414.01 T 5369.84 T 184,447.00 T 34,663.15 T 34,663.15 T

SITE AND CONSTRUCTION FUND

Account	Total Receipts	To Date	Prev. Mo. To Date	This Mo.	Budget	Unexpended	Unencumbered
ANNIXTER REVENUE	23,698.75	23,698.75	18,951.00	4,747.75	49,850.00	26,151.25	26,151.25
UNIT 5 REVENUE	5,000.00	5,000.00	4,000.00	1,000.00	12,000.00	7,000.00	7,000.00
INTEREST ON INVESTMENTS	26,070.28	26,070.28	17,257.78	8,812.50	25,000.00	1,070.28 CR	1,070.28 CR
	54,769.03 T	54,769.03 T	40,208.78 T	14,560.25 T	86,850.00 T	32,080.97 T	32,080.97 T

BOND & INTEREST #1

CURRENT TAXES	24,282.06	24,282.06	23,581.86	7,005.20	29,936.00	57,111.94	57,111.94
BACK TAXES	1,322.89	1,322.89		1,322.89		1,322.89 CR	1,322.89 CR
INTEREST ON INVESTMENTS	2,507.22	2,507.22	2,282.22	225.00	6,000.00	3,492.78	3,492.78
	24,654.17 T	24,654.17 T	23,810.10 T	8,553.09 T	30,936.00 T	59,281.83 T	59,281.83 T

BOND & INTEREST #2

CURRENT TAXES	78,947.93	78,947.93	76,670.37	2,277.56	97,471.00	18,523.07	18,523.07
BACK TAXES	506.67	506.67		506.67		506.67 CR	506.67 CR
INTEREST ON INVESTMENTS	552.37	552.37	552.37	.00	50.00	502.37 CR	502.37 CR
	80,006.97 T	80,006.97 T	77,222.74 T	2,784.23 T	97,521.00 T	17,514.03 T	17,514.03 T

WORKING CASH FUND

INTEREST ON INVESTMENTS	27,002.80	27,002.80	19,793.51	7,209.29	10,000.00	17,002.80 CR	17,002.80 CR
	27,002.80 T	27,002.80 T	19,793.51 T	7,209.29 T	10,000.00 T	17,002.80 CR	17,002.80 CR

INSURANCE FUND

CURRENT TAXES	9,902.22	9,902.22	9,616.55	285.67	12,058.00	2,155.78	2,155.78
	9,902.22 T	9,902.22 T	9,616.55 T	285.67 T	12,058.00 T	2,155.78 T	2,155.78 T

SAUK VALLEY COLLEGE

APPROVED BY

William E. Rayle

PRESIDENT

Lorna Keefer

SECRETARY

DATE