

SAUK VALLEY COMMUNITY COLLEGE BOARD OF TRUSTEES MEETING

Third Floor Board Room

March 23, 1992

7:00 p.m.

- A. Call to Order
- B. Roll Call
- C. Communication from Visitors
- D. Approval of Minutes
- E. President's Report
 - 1. New Endowment Challenge Grant Drive
 - 2. Published Article - Judy Williamson
 - 3. ICCTA Student Essay Contest Winners
 - 4. Women's Basketball Success
 - 5. Endowment Challenge Grant - \$627,737.98
(an increase of \$4,719.55)
- F. Financial Reports and Actions
 - 1. Treasurer's Report
 - 2. Bills Payable
 - 3. Payrolls - Feb. 28-\$370,458.20; March 15-\$252,858.73
 - 4. Budget Report
 - 5. Whiteside County Tax Appeal Resolutions - 1991
 - 6. Position Replacements
 - 7. Permission to Bid
- G. Discussion Items
 - 1. Outdoor Restroom Facility Proposal
 - 2. Potential Bond Issue Projects
- H. Executive Session
- I. Personnel Recommendations
 - 1. Administrative Re-appointments
 - 2. Contractual Re-appointments
 - 3. Termination of SVCC-DCC Staff
 - 4. Faculty Resignation
- J. Other Actions
 - 1. Moonlight Gala
 - 2. Board Policy Changes - First Reading
- K. Reports
 - 1. Student Trustee
 - 2. ICCTA Representative
 - 3. Foundation Liaison
 - 4. Board Chair
- L. Time of Next Meeting
 - Monday, April 27, 1992 - 7:00 p.m.
 - Third Floor Board Room

SAUK VALLEY COMMUNITY COLLEGE BOARD OF TRUSTEES MEETING MINUTES

March 23, 1992

The Board of Trustees of Sauk Valley Community College met in regular meeting at 7 p.m. on Monday, March 23, 1992 in the third floor Board Room of Sauk Valley Community College, 173 Illinois Route #2, Dixon, Illinois.

Call to Order: Chair Yemm called the meeting to order at 7 p.m. and the following members answered roll call:

Thomas Densmore	Richard Groharing
William Simpson	Patricia Smith
Margaret Tyne	B.J. Wolf
William Yemm	Laura Heuck

SVCC Staff: President Richard L. Behrendt
Vice President Ron Appuhn
Vice President Karen Kylen
Vice President John Sagmoe
Vice President Virginia Thompson
Secretary to the Board Marilyn Vinson
Board Attorney Ole Bly Pace III

Minutes: It was moved by Member Groharing and seconded by Member Wolf that the Board approve the minutes of the February 24 meeting with the notation that the Board adjourned at 9:45 p.m. instead of 7:45 p.m. In a roll call vote, all voted aye. Motion carried. Student Trustee Heuck advisory vote: aye.

President's Report: President Behrendt reported on the success of the women's basketball team, that a new Endowment Challenge Drive was underway and that donations had been received from faculty, classified, and administration, that Judy Williamson had an article published, that Karen Van Hoose won the Sauk ICCTA Student Essay Contest with Genelle Harrison coming in second, and that the Endowment Challenge Grant Fund total was \$627,737.98, which is an increase of \$4,719.55 over last month.

Treasurer's Report: It was moved by Member Simpson and seconded by Member Smith that the Board approve the Treasurer's Report as presented. In a roll call vote, all voted aye. Motion carried. Student Trustee Heuck advisory vote: aye.

Bills
Payable: It was moved by Member Densmore and seconded
by Member Groharing that the Board approve
bills in the following amounts:

Educational Fund	\$630,740.03
Operations/Maintenance	39,662.03
Liability/Protection	23,049.56

In a roll call vote, all voted aye. Motion
carried. Student Trustee Heuck advisory
vote: aye.

Payroll: It was moved by Member Groharing and seconded
by Member Simpson that the Board approve the
February 28 payroll of \$370,458.20 and the
March 15 payroll of \$252,858.73. In a roll
call vote, all voted aye. Motion carried.
Student Trustee Heuck advisory vote: aye.

Tax Appeal
Resolutions-
Whiteside
County: It was moved by Member Wolf and seconded by
Member Simpson that the Board approve the
attached resolution to authorize the firm of
Hodges, Loizzi, Eisenhammer, Rodick & Kohn to
file as legal representative on our behalf a
Request to Intervene in the Property Tax
Appeal Board case involving Northwestern
Steel and Wire Company of Sterling. In a
roll call vote, all voted aye. Motion
carried. Student Trustee advisory vote:
aye.

It was moved by Member Simpson and seconded
by Member Densmore that the Board approve
the attached resolution to authorize the firm
of Robbins, Schwartz, Nicholas, Lifton &
Taylor, Ltd. to file as legal representative
on our behalf a Request to Intervene in the
Property Tax Appeal Board case involving the
Civic Plaza II of Rock Falls. In a roll call
vote, all voted aye. Motion carried.
Student Trustee Heuck advisory vote: aye.

Position
Replacements: It was moved by Member Tyne and seconded by
Member Groharing that the Board re-allocate
two full-time faculty positions from
automotive and diesel technology to science
and math/data processing and one full-time
faculty position from medical laboratory
technology to science, effective with the
1992-93 school year. In a roll call vote,
all voted aye. Motion carried. Student
Trustee Heuck advisory vote: aye.

Computer
Center
Air
Conditioning:

It was moved by Member Groharing and seconded by Member Simpson that the Board approve the development of specifications in order to seek bids to provide a new air conditioning system for the computer center. In a roll call vote, all voted aye. Motion carried. Student Trustee Heuck advisory vote: aye.

Discussion
Items:

Discussion was held on a proposal to build an outdoor restroom/storage/concession facility for the athletic fields and two possible bond projects which included removal of underground storage tanks and a proposal for power generation.

It was moved by Member Densmore and seconded by Member Simpson that the Board give approval to develop specifications and seek bids for the outdoor restroom/storage/concession facility and ask the administration to bring back more information on the storage tank removal and power generation proposals. In a roll call vote, all voted aye. Motion carried. Student Trustee Heuck advisory vote: aye.

Executive
Session:

At 7:45 p.m. it was moved by Member Simpson and seconded by Member Smith that the Board adjourn to executive session to discuss the appointment, employment, or dismissal of an employee and collective negotiating matters. In a roll call vote, all voted aye. Motion carried. Student Trustee Heuck advisory vote: aye.

Regular
Session:

The Board returned to regular session at 10:00 p.m.

Administrative
Reappointments:

It was moved by Member Groharing and seconded by Member Densmore that the Board reappoint the following administrators for the 1992-93 year:

Continuing Appointments

Walt Clevenger	Dick Holtam
Ron Marlier	Alan Pfeifer
John Sagmoe	Mike Seguin

Two Year Contracts

Russ Damhoff	Zollie Hall
Karen Kylan	Virginia Thompson

One Year Contract

Ron Appuhn	Rose Johnson
Bobbi McBride	Jim Reynolds
Steve Ullrick	Cindy Watkins
Jan Woodhouse	

In a roll call vote, all voted aye. Motion carried. Student Trustee Heuck advisory vote: aye.

Contractual
Reappointments:

It was moved by Member Densmore and seconded by Member Simpson that the Board reappoint the following contractual and temporary staff for the periods indicated pending satisfactory evaluations by their supervisors and contingent upon the continuation/renewal of their respective grants/contracts:

Jane Dorman	Steve Cordogan
Tom Gospodarczyk	Linda Kim
Kate Heckman	Kenneth Ballom
Tom Breed	Colleen Klein
Suzanne McLaughlin	Dan Thompson
Cindy Alfano	Letty O'Neil

In a roll call vote, all voted aye. Motion carried. Student Trustee Heuck advisory vote: aye.

Termination
of SVCC-DCC
Staff:

President Behrendt reported that the Department of Corrections has decided not to renew their contract with the college to provide educational services at the Dixon Correctional Center.

It was moved by Member Simpson and seconded by Member Groharing that the Board terminate the following SVCC-DCC employees at the conclusion of the current contract on June 30, 1992:

Shirley Anderson	Patrick Barrett
Bill Bencini	Judith Bodmer
R. Thomas Brehm	Christine Heckman
Allan Johnson	Joseph Rush
Terry Simmons	

In a roll call vote, all voted aye. Motion carried. Student Trustee Heuck advisory vote: aye.

Faculty
Resignation:

It was moved by Member Groharing and seconded by Member Densmore that the Board accept with regret the resignation of Mary Niemann, effective at the end of the 1991-92 school year. In a roll call vote, all voted aye. Motion carried. Student Trustee Heuck advisory vote: aye.

Moonlight Gala:

It was moved by Member Simpson and seconded by Member Tyne that the Board give approval to allow the administration and the Foundation to follow applicable statutes, appropriate ICCB guidelines, and SVCC Board Policy 516.01, to serve alcoholic beverages at the Foundation Moonlight Gala to be held on June 6, 1992. In a roll call vote, all voted aye. Motion carried. Student Trustee Heuck advisory vote: aye.

Board Policy
Changes:

It was moved by Member Groharing and seconded by Member Wolf that the Board approve changes to Board Policies 504.01 and 517.01 as attached for first reading. In a roll call vote, all voted aye. Motion carried. Student Trustee Heuck advisory vote: aye.

Reports:

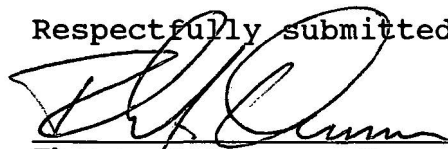
Student Trustee Heuck reported on the various activities planned by the Student Senate for Earth Week.

ICCTA Representative Groharing presented a written report and reminded the group of ICCTA Lobby Day to be held on May 13, 1992.

Since the scheduled business was completed, it was moved by Member Simpson and seconded by Member Tyne that the Board adjourn. The next regular meeting of the Board is scheduled for Monday, April 27, 1992 at 7 p.m. in the third floor Board Room of the college. In a roll call vote, all voted aye. Motion carried. Student Trustee Heuck advisory vote: aye.

The meeting adjourned at 10:15 p.m.

Respectfully submitted:



Thomas Densmore, Secretary

For Board Meeting
of March 23, 1992

Agenda Item F-5

WHITESIDE COUNTY TAX APPEAL RESOLUTIONS - 1991

In January the Board approved a resolution authorizing the legal firm of Hodges, Loizzi, Eisenhammer, Rodick & Kohn to file as legal representative on behalf of the college a Request to Intervene in four property tax appeal board cases in Lee County. We have now received tax appeals from two firms in Whiteside County and the attached two resolutions, if approved by the Board, will authorize the legal representatives noted below to intervene on our behalf.

RECOMMENDATION: Board approval to adopt the attached resolution to authorize the firm of Hodges, Loizzi, Eisenhammer, Rodick & Kohn to file as legal representative on our behalf a Request to Intervene in the Property Tax Appeal Board case involving Northwestern Steel & Wire Company of Sterling.

Board authorization to adopt the attached resolution to authorize the firm of Robbins, Schwartz, Nicholas, Lifton & Taylor, Ltd. to file as legal representative on our behalf a Request to Intervene in the Property Tax Appeal Board case involving Civic Plaza II of Rock Falls.

RESOLUTION AUTHORIZING REQUEST TO INTERVENE

WHEREAS, the Board of Trustees of Sauk Valley Community College District No. 506 has received notice from the Board of Review of Whiteside County that Civic Plaza II has appealed to the Property Tax Appeal Board regarding the 1991 assessed valuation for its property located in Coloma Township, which property comprises part of the assessed valuation of said Sauk Valley Community College District No. 506; and

WHEREAS, the Board of Trustees of Sauk Valley Community College District No. 506 having a revenue interest in said assessed valuation appeal finds intervention as a party therein to be in the best interests of this Sauk Valley Community College District No. 506.

NOW, THEREFORE BE IT RESOLVED by the Board of Trustees of Sauk Valley Community College District No. 506 as follows:


Section 1. That Heidi A. Katz of Robbins, Schwartz, Nicholas, Lifton & Taylor, Ltd. be authorized, as of the postmark date of the aforementioned Board of Review notice, to file as legal representative on its behalf a Request To Intervene in PTAB Docket No. 91-596-C-3 relating to the 1991 assessed valuation appeal of Civic Plaza II.

Section 2. That this resolution shall take effect immediately upon its passage.

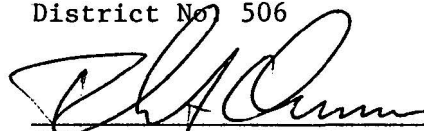
Passed this 23rd day of March, 1992.

AYES:

NAYS:



Chairman, Board of Trustees
Sauk Valley Community College
District No. 506



Secretary, Board of Trustees
Sauk Valley Community College
District No. 506

RESOLUTION AUTHORIZING REQUEST TO INTERVENE

Laurel Valley
Comm College
WHEREAS, *Laurel Valley Comm College* ("Taxing District"), has received notice from the Board of Review of Whiteside County that Northwestern Steel and Wire Co. has appealed to the Property Tax Appeal Board the 1988, 1989, 1990 and 1991 assessed valuation for its property located in Whiteside County, Illinois, which property comprises part of the assessed valuation of the Taxing District; and

WHEREAS, the Taxing District has a revenue interest in the assessed valuation appeals and finds that intervention as a party in the assessed valuation proceedings is in the best interests of the Taxing District;

NOW, THEREFORE, BE IT RESOLVED by the Taxing District as follows:

Section One: That Robert A. Kohn of Hodges, Loizzi, Eisenhammer, Rodick & Kohn, is authorized by the Taxing District to file as legal representative on its behalf, a Request to Intervene in the following Property Tax Appeal Board cases regarding the assessed valuation of Northwestern Steel & Wire Co.:

1. 88-1231-I-3 through 88-1304-I-3;
2. 89-1536-I-3 through 89-1611-I-3;
3. 90-362-I-3;
4. 91-771-I-3.

Section Two: That this Resolution shall take effect immediately upon its passage.

Adopted this 23 day of March, 1992, by the following vote:

AYES:

NAYES:

ABSENT:

ATTEST:

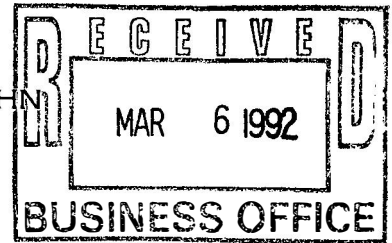
William B. Jensen

President

Tha Quinn

Secretary

LAW OFFICES OF
HODGES, LOIZZI, EISENHAMMER, RODICK & KOHN
3030 SALT CREEK LANE
SUITE 202
ARLINGTON HEIGHTS, ILLINOIS 60005



TELEPHONE: (708) 670-9000

FACSIMILE: (708) 670-7334

MEMORANDUM

ROBERT A. KOHN

TO: STERLING AND HOPKINS TOWNSHIPS TAXING DISTRICTS
FROM: ROBERT A. KOHN
RE: NORTHWESTERN STEEL AND WIRE
DATE: MARCH 5, 1992

Northwestern Steel and Wire has filed an appeal of its 1991 assessed valuation for the 1991 tax year with the Property Tax Appeal Board. I have enclosed for your information a copy of our Request to Intervene in the 1991 case and our Evidence Clarification-Intervenor form.

I have also enclosed a Resolution Authorizing Request to Intervene. **PLEASE HAVE YOUR TAXING DISTRICT APPROVE THE RESOLUTION AND RETURN THE ORIGINAL EXECUTED RESOLUTION TO ME.**

Mr. Voelz and his assistants have successfully concluded eight days at Northwestern's facility. They are preparing their report, which should be ready to file with the PTAB no later than April 30, 1992. As I have previously indicated, the hearing on the valuation of Northwestern's property is scheduled for the week of September 14, 1992.

If you have any questions regarding this matter, please do not hesitate to call.

cc: Gary Spencer
Daryl Drennen

ROCK FALLS ELEMENTARY SCHOOL DISTRICT 13

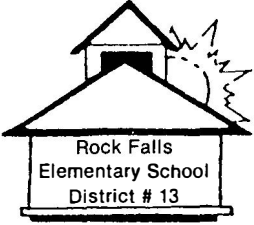
602 Fourth Avenue

Rock Falls, IL 61071-1297

(815)626-2604

FAX (815)626-2627

Jack H. Etnyre, Superintendent



BOARD MEMBERS:

Barbara Burroughs, Pres.

Ted Nicklaus, Vice-Pres.

Debbie Gonzalez, Secretary

David Drane

Marvin Finkle

Charles Koehler

Thomas Starr

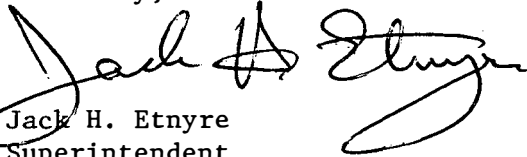
March 3, 1992

Dear Coloma Township Taxing Bodies:

I recently received a letter from Heidi Katz concerning Civic Plaza II's assessed valuation appeal for 1991 (copy attached). You will recall that Civic Plaza II has appealed their assessment previously for the years 1987 through 1990. That matter is currently before the Property Tax Appeal Board.

Please have your governing board complete the attached resolution which authorizes Heidi Katz to intervene on behalf of the various taxing bodies involved and send it to her Chicago address.

Sincerely,


Jack H. Etnyre
Superintendent

JHE/kp

enc

For Board Meeting
of March 23, 1992

Agenda Item F-6

POSITION REPLACEMENTS

As the Board is aware, with the discontinuance of the automotive and diesel technology programs, we will have two full-time faculty vacancies. The primary reason for the discontinuation of these two programs was lack of enrollment and a need for the college to re-allocate its resources. Therefore, we are requesting that these two faculty positions be re-allocated to and math/data processing as detailed in the attached from Vice President Thompson.

As Agenda Item I-4 details, Mary Niemann has resigned from her temporary biology/chemistry position and we also need to replace her on a permanent basis. This would fill Harold Nelson's full-time position in medical laboratory technology.

RECOMMENDATION: Board approval to re-allocate two full-time faculty positions from automotive and diesel technology to science and math/data processing and from medical laboratory technology to science, effective with the 1992-93 school year.

SAUK VALLEY COMMUNITY COLLEGE
MEMORANDUM

DATE: March 18, 1992
TO: Dr. Behrendt
FROM: Virginia Thompson *VT*
SUBJECT: Faculty Positions

The following positions are being recommended for the 1992-93 year:

1. Science (two full-time positions)

As you are aware our enrollments in biology and chemistry have increased significantly over the past five years as indicated in the table below.

	Credit Hours				
	<u>FY 88</u>	<u>FY 89</u>	<u>FY 90</u>	<u>FY 91</u>	<u>FY 92*</u>
Biology	1793	2122	2483	2900	3250
Chemistry	<u>1209</u>	<u>1234</u>	<u>1620</u>	<u>1804</u>	<u>2100</u>
	3002	3356	4103	4704	5350

*Estimates based on projections from tenth day enrollment; other years reflect apportionment hours

The change from 3002 hours in FY 88 to approximately 5350 in FY 92 is an increase of 78%.

To respond to this increased demand we created a temporary position for the 1991-92 year, received Board approval to create a second temporary position for the spring 1992 semester, and had 51 hours of overload taught by full-time staff.

As the schedule has been developed for the next year there are currently 54 unassigned load hours in biology and chemistry. This does not include any additional sections which may be needed or the BIO 120 telecourse.

I recommend that the temporary position created last year be established as a regular tenure track position and that a second tenure track position be approved. We will seek candidates who have qualifications in more than one area to provide us the greatest flexibility and benefit.

These positions reflect a reallocation of current positions.

2. Math/Data Processing (full-time position)

Another area of significant growth over the past five years has been math. The table below indicates that there has been a 55% enrollment increase during this time.

Credit Hours					
	<u>FY 88</u>	<u>FY 89</u>	<u>FY 90</u>	<u>FY 91</u>	<u>FY 92*</u>
Math/ College Level	2265	2654	2932	3037	3400
Math/ Academic Skills	<u>1467</u>	<u>1482</u>	<u>1610</u>	<u>1972</u>	<u>2400</u>
	3732	4136	4542	5009	5800

*Estimates based on projections from tenth day enrollment; other years reflect apportionment hours

In data processing we currently have 60 load hours of instruction provided by part-time and overload assignments; other courses have not been offered due to lack of instructors. To provide a comprehensive program and sufficient sections to meet the demand, additional full-time staffing is required.

I recommend that a position be reallocated to provide a full-time tenure track position in math/data processing.

For Board Meeting
of March 23, 1992

Agenda Item F-7

PERMISSION TO BID

As the attached memorandum from Vice President Kylen outlines, our current air conditioning system is inadequate to properly accommodate even the present IBM 4361 computer and peripherals. With the installation of the IBM 4381 and additional disc drives, the problem will become worse. While this is a non-budgeted item, we do have savings in the Information Systems budget that would cover the estimated amount for a new air conditioning system.

RECOMMENDATION: Board approval to develop specifications and seek bids to provide a new air conditioning system in the computer center.



SAUK VALLEY
COMMUNITY
COLLEGE

173 IL Rt. 2, Dixon, IL 61021 • 815/288-5511

MEMORANDUM

March 19, 1992

TO: Dr. Richard Behrendt

FROM: Karen Kylan *KK*

SUBJECT: Air Conditioning - Information Systems Center

When the IBM 4361 computer and peripherals were installed in 1986, a 68,000 BTU air conditioning system was installed for environmental control of the area. The BTU output of the computer and peripherals was estimated at 29,000. Over the years, additional peripherals such as large capacity disk drives have been added to the computer creating several demands on the air conditioning system. It is now estimated that the BTU output of the computer system as currently configured is 71,400. We are literally operating in an environment which can, and probably has, caused damage to the equipment.

The installation of the IBM 4381 and additional disk drives will add to the heat problem. It is estimated that the BTU output will be 96,848. It is absolutely necessary to install a new air conditioning unit which will provide adequate environmental control. Ideally, the system should be installed as early as possible in the spring.

We have investigated several types of air conditioners and estimated the cost to be no greater than \$15,000. This item is not currently in the equipment budget. However, there are budget savings in the Information Systems budget equivalent to this amount. (Attorney Pace tells us that the air conditioner cannot be purchased from Site and Construction funds.)

I recommend that we seek Board approval to bid the air conditioner for Information Systems.

For Board Meeting
of March 23, 1992

Agenda Items G-1 and G-2

DISCUSSION ITEMS

G-1 - Outdoor Restroom Facility Proposal

G-2 - Potential Bond Issue Projects

Attached are two proposals from Vice President Appuhn that are submitted for board discussion and general direction. No final action will be requested at the March meeting, but discussion will be asked to provide direction to the administration.

RECOMMENDATION: Discussion items only.



**SAUK VALLEY
COMMUNITY
COLLEGE**

173 IL Rt. 2, Dixon, IL 61021 * 815/288-5511

MEMORANDUM

TO: Dr. Richard Behrendt
FROM: Ron Appuhn *Ron*
DATE: March 13, 1992
SUBJECT: Outdoor Restroom Facility

The architect has received written estimates on the proposed outdoor facility. The relevant costs are as follows:

Building structure	\$26,400
Fixtures, septic, and water line	19,200
Electrical	7,275
Tennis court fountain	4,082
A&E (and contingency)	<u>5,696</u>

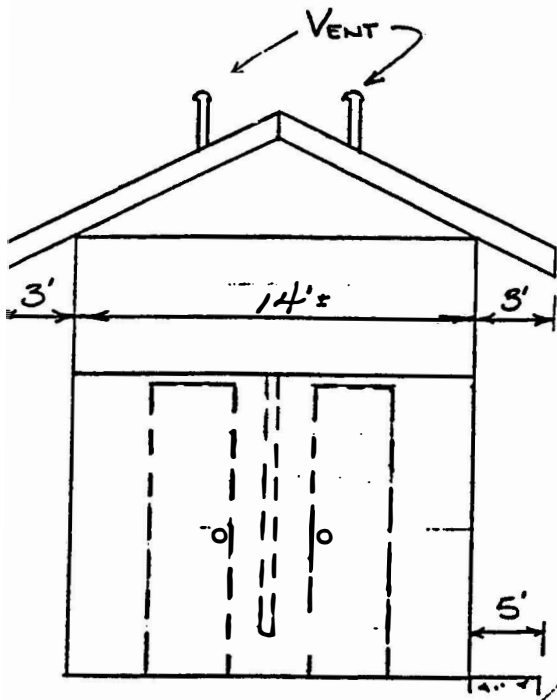
\$62,653

The structure consists of a concrete block building on a concrete pad. The exterior of the building will be brick, in an attempt to match the campus decor, with a shingled, reverse-V-shaped roof. Five feet of overhang will be made on each end of the building. The interior concrete block walls will be painted. The two restrooms will be 6' x 8' (handicap accessible). The storage/concession area is 8' x 12', with one window and one door. There will be one outside drinking fountain (handicap accessible). There will not be an exterior water faucet because the water line cannot generate enough water for a hose. Restroom entries will have privacy walls. Interior spaces will have sheet rock ceilings and will be vented. Plans will provide for a utility sink in the storage area.

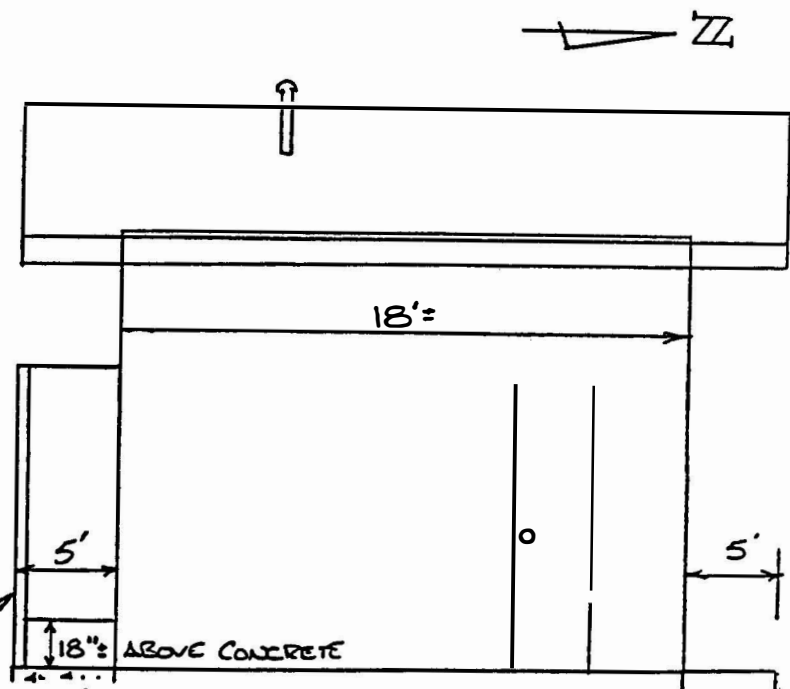
A septic system will serve the facility. The water line will run from the main building. Electrical service will be run from the closest location (near the track). A water line and fountain is proposed for the tennis court.

The proposed construction site is nestled between trees, strategically located to serve the ball fields while being able to serve potential future uses of the track area.

Rough drafts of the building floor plan and site location are attached.

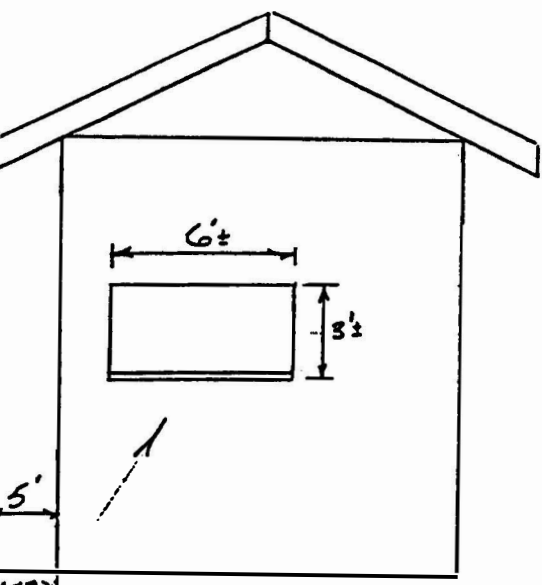


(SOUTH END)

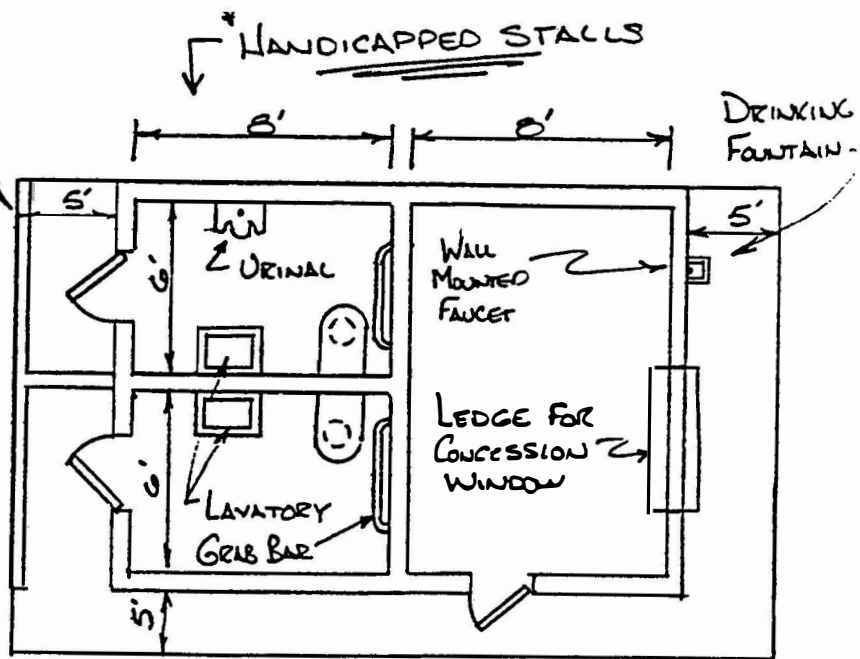


PRIVACY WALL

CONCRETE APRON



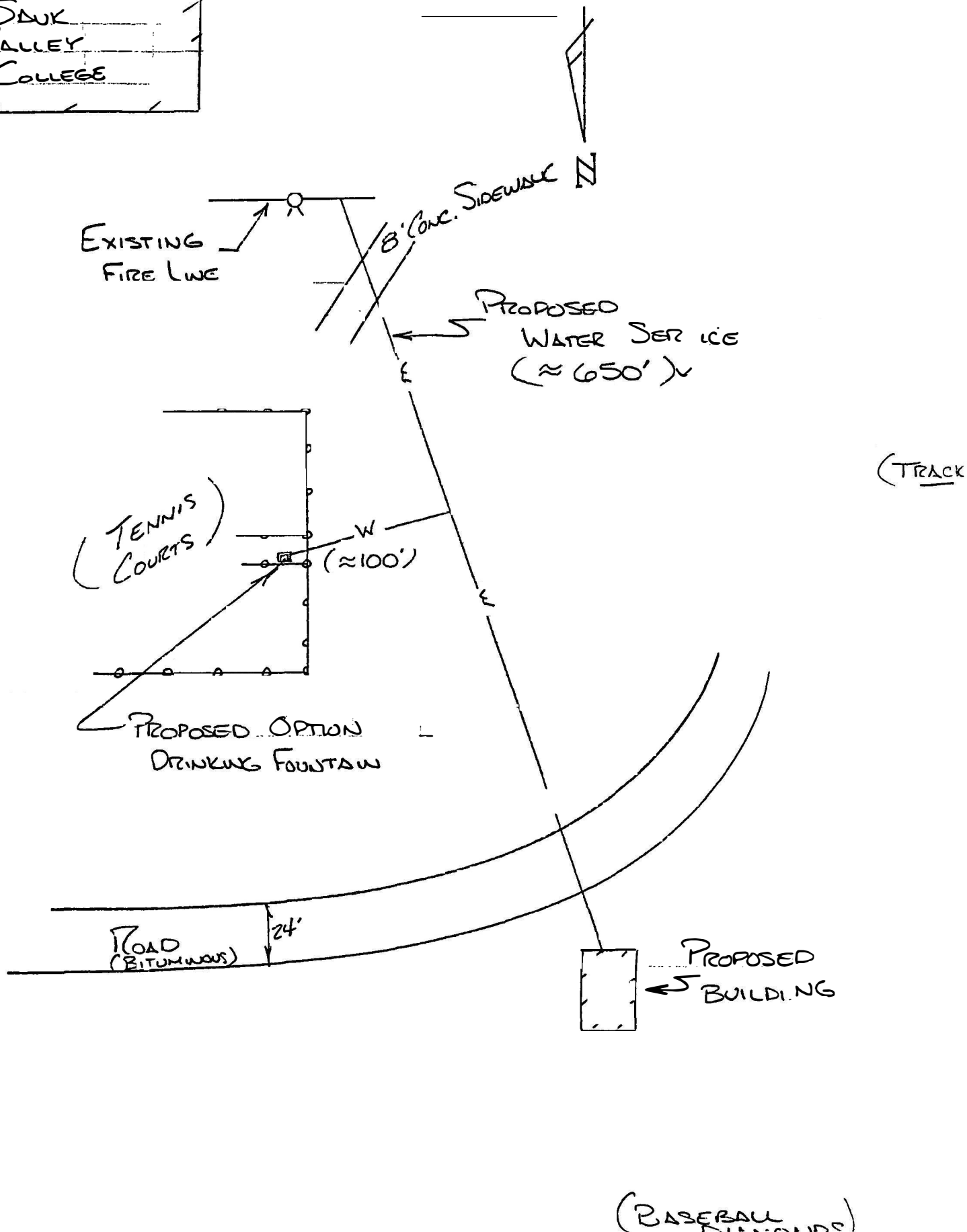
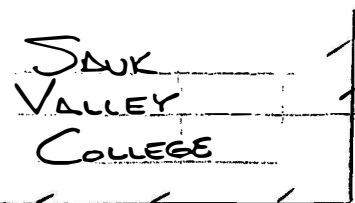
(NORTH END)



RECEIVED

NOV 1 1991

RICHARD J. PRESCOTT
CONSULTING ENGINEER





SAUK VALLEY
COMMUNITY
COLLEGE

173 IL Rt. 2, Dixon, IL 61021 * 815/288-5511

MEMORANDUM

TO: Dr. Richard Behrendt

FROM: Ron Appuhn *RA*

DATE: March 16, 1992

SUBJECT: Potential Bond Issue Projects

Jim Reynolds and I are researching two major physical plant projects that can be funded from a new revenue source. The projects include power generation and underground storage tank removal.

Our electrical rates are composed of demand and usage charges. A feasibility study, currently underway, is expected to demonstrate that we can reduce operating costs by a net of \$100,000 to \$140,000 by purchasing a generator that can produce electricity from natural gas during peak demand hours. Other colleges are using this approach with success.

The recent oil spill brought needed attention to our underground storage tank situation. Jim has discovered that we are in violation of federal and state requirements, including registration of tanks and monthly monitoring for leak detection. We should not merely discontinue use of the tanks, because we are on "interruptible" gas. Also, corrosion protection and spill/overflow prevention will both be required by the federal government. We are having professional estimates made of the cost for full compliance, including removal and replacement of tanks where needed.

The projects are eligible for protection, health and safety funding. The underground storage tank proposal is obviously eligible. The power generation proposal is eligible as an energy conservation measure because the payback will be less than eight years. The rough estimated total costs of both projects is \$1,000,000.

I would like to propose a protection, health and safety bond issue to fund these projects. We are allowed to levy bonds up to \$1,500,000 in addition to our regular nickel levy for other projects. At current interest rates and using a five year payback as a rough guide, the increased tax levy would only be four cents per year. This bond issue needs approval by the Board, the ICCB, and the IBHE, but is not subject to voter approval.

Memorandum to Dr. Behrendt
March 16, 1992
Page Two

This proposal, when fully complete, will be designed to cut operating fund costs significantly (power generation) and to remove a major environmental concern (underground tanks). Jim and I plan to have the final proposal ready by the April Board meeting.

For Board Meeting
of March 23, 1992

Agenda Item I-1

ADMINISTRATIVE REAPPOINTMENTS

Each year we act on administrative reappointments. The following personnel are recommended for reappointment for the positions shown for 1992-93:

CONTINUING APPOINTMENTS PER POLICY 410.01

Clevenger, Walter	Director of Information Systems
Holtam, Richard	Dean of Health, Community Services
Marlier, Ronald	Director of Financial Aid
Pfeifer, Alan	Assistant Director of Information Systems
Sagmoe, John	Vice President of Student Services
Sequin, Michael	Dean of Arts, Social Sciences, and Physical Education

TWO YEAR CONTRACTS PER POLICY 409.01

Damhoff, Russ	Head Men's Basketball Coach and Director of Sports Information, Director Athletic Booster Club, and Intramurals
Hall, Zollie	Dean of Business, Technology and Natural Sciences
Kylen, Karen	Vice President of College Advancement
Virginia Thompson	Vice President of Instructional Services

ONE YEAR CONTRACT PER POLICY 409.01

Appuhn, Ron	Vice President of Business Services
Johnson, Rosemary	Director of Nursing Education
McBride, Bobbi	Director of Marketing and Public Relations
Reynolds, Jim	Director of Building and Grounds
Ullrick, Steve	Director of Admissions, Records, and Placement
Watkins, Cindy	Business Manager
Woodhouse, Jan	Coordinator of Student Activities

RECOMMENDATION: It is recommended that the Board reappoint the administrators noted above for the 1992-93 year.



SAUK VALLEY
COMMUNITY
COLLEGE

173 IL Rt. 2, Dixon, IL 61021 • 815/288-5511

MEMORANDUM

February 26, 1992

TO: Dr. Behrendt

FROM: Karen Kylen *YK*

SUBJECT: Administrative Reappointments

I recommend the following administrators for reappointment for the 1992-93 year. This recommendation is based on prior evaluations and current performance.

Roberta McBride - Director of Marketing & Public Relations
Walter Clevenger - Director of Information Systems
Alan Pfeifer - Assistant Director of Information Systems

In addition, I recommend that the following Title III grant funded administrator be appointed for 1992-93 provided that the grant is renewed for the federal fiscal year beginning October 1, 1992.

Steve Cordogan - Director of Student Research



SAUK VALLEY
COMMUNITY
COLLEGE

173 IL Rt. 2, Dixon, IL 61021 • 815/288-5511

MEMORANDUM

To: Karen Kylan

Feb. 18, 1992

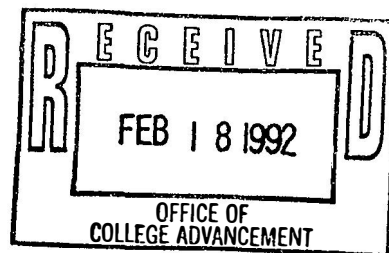
From: Walter Clevenger *WC*

Subject: Continued Appointment of Alan Pfeifer

As usual Alan Pfeifer's performance has been exceptional. Based on his past evaluations and his current level of performance, I recommend that Alan Pfeifer be retained for the 1992-1993 school year.

cc Alan Pfeifer

ap93
Disk#3



SAUK VALLEY COMMUNITY COLLEGE
MEMORANDUM

DATE: February 25, 1992
TO: Dr. Behrendt
FROM: Virginia Thompson *VT*
SUBJECT: Administrative Reappointments

I recommend that the following administrators be reappointed for the 1992-93 fiscal year based on satisfactory performance:

Zollie Hall, Dean of Business, Technology
and Natural Science
Dick Holtam, Dean of Health and Community Service
Mike Seguin, Dean of Arts, Social Science and P.E.
Rosemary Johnson, Director of Nursing Education

I also recommend that the following contractual employees be reappointed for for the 1991-92 fiscal year based on satisfactory performance and renewal of the relevant grant or contract:

Thomas Gospodarczyk, Director of the Center for Business
and Economic Development
Linda Kim, Coordinator of the VITAL Project

js



SAUK VALLEY
COMMUNITY
COLLEGE

173 IL Rt. 2, Dixon, IL 61021 • 815/288-5511

MEMORANDUM

TO: Dr. Behrendt DATE: February 24, 1992
FROM: John Sagmoe SUBJECT: Administrative Reappointment
Recommendations

This is to advise you that I am recommending the following full-time administrative appointments for 1992-93:

Director of Admissions, Records & Placement
Steve Ullrick

Director of Financial Aid & Veterans Affairs
Ronald F. Marlier

Coordinator of Student Support Services
Jane Dorman

Part-time administrative recommendations for 1992-93:

Director Of Sports Information, Boosters, Intramural
Basketball Coach
Russ Damhoff

Coordinator of Student Activities
Janice Woodhouse

JES/df



SAUK VALLEY
COMMUNITY
COLLEGE

173 IL Rt. 2, Dixon, IL 61021 • 815/288-5511

MEMORANDUM

TO: Dr. Richard Behrendt
FROM: Ronald E. Appuhn *Per*
DATE: February 24, 1992
SUBJECT: Administrative Reappointments

I recommend Cynthia Watkins and Jim Reynolds for continued employment in FY 93 as Business Manager and Director of Buildings and Grounds, respectively. Cindy and Jim are performing very well and project a positive image and impact on Business Services and the College as a whole.

For Board Meeting
of March 23, 1992

Agenda Item I-2

CONTRACTUAL RE-APPOINTMENTS

We need to re-appoint all contractual positions for 1992-93 pending continuations/renewal of their grants/contracts, with the appropriate salary increase for the position, and for the time periods specified.

<u>Name</u>	<u>Grant(s)</u>	<u>Grant/Contract Fiscal Year</u>
<u>Administrators</u>		
Dorman, Jane	Student Support Services (Title IV)	September 1 - August 31
Cordogan, Steve	Title III	October 1 - September 30
Tom Gospodarczyk	Economic Development Small Business	July 1 - June 30
Kim, Linda	VITAL	July 1 - June 30
<u>Faculty</u>		
Heckman, Kate	Student Support Services (Title IV)	September 1 - August 31
Ballom, Kenneth	Student Support Services (Title IV)	September 1 - August 31
Breed, Tom	Title III	October 1 - September 30
Klein, Colleen	Title III	October 1 - September 30
McLaughlin, Suzanne	Title III	October 1 - September 30
Thompson, Daniel	Title III	October 1 - September 30

CONTRACTUAL RE-APPOINTMENTS

(continued)

Other

Alfano, Cindy	Temporary replacement for Tom Breed	October 1 - September 30
O'Neil, Letty	Temporary one-half time replacement for Michael Hustad/vacancy	October 1 - September 30

Recommendation: Re-appointment of the contractual and temporary staff as listed, pending satisfactory evaluation and supervisory recommendation with all appointments contingent upon the continuation/renewal of their grants/contracts and with the appropriate salary increases.

For Board Meeting
of March 23, 1992


Agenda Item I-3

TERMINATION OF SVCC-DCC STAFF

As the Board is aware, the Department of Corrections has decided not to renew our contract with them to provide educational services at the Dixon Correctional Center. Therefore, it is necessary for the Board of Trustees to take official action to terminate the contractual employees there.

RECOMMENDATION: Termination of the attached SVCC-DCC employees at the conclusion of the current contract -- June 30, 1992.

SAUK VALLEY COMMUNITY COLLEGE
MEMORANDUM

DATE: March 16, 1992
TO: Dr. Behrendt
FROM: Virginia Thompson 
SUBJECT: Termination of SVCC at DCC Professional Staff

Below is a list of the professional staff to be recommended to the Board of Trustees for termination as a result of the discontinuation of the SVCC contract with the Department of Corrections to provide instruction at the Dixon Correctional Center.

Shirley Anderson, Food Service
Patrick Barrett, Construction Technology
William Bencini, Automotive Technology
Judith Bodmer, Business Information Systems
R. Thomas Brehm, Horticulture
Christine Heckman, Counselor
Allan Johnson, Electronics Technology
Joseph Rush, Small Engine Technology
Terry Simmons, Director

js

For Board Meeting
of March 23, 1992

Agenda Item I-4

FACULTY RESIGNATION

As the Board will recall, we hired Mary Niemann on a one-year temporary basis to teach biology and chemistry and replace Harold Nelson who was head of the medical laboratory technology program. As the attached resignation explains, Mary Niemann will not be with us next year.

RECOMMENDATION: Board acceptance with regret of Mary Niemann's resignation, effective at the end of the 1991-92 school year.



SAUK VALLEY
COMMUNITY
COLLEGE

173 IL Rt. 2, Dixon, IL 61021 * 815/288-5511

MEMORANDUM

DATE: March 18, 1992

TO: Virginia Thompson

FROM: Mary Niemann *M.N.*

Due to relocation, I regretfully must resign from the position of biology instructor, effective at the termination of the Spring 1992 semester.

My experience at Sauk Valley Community College has been positive and will certainly be an asset to my future career plans.

For Board Meeting
of March 23, 1992

Agenda Item J-1

MOONLIGHT GALA

In the past the Board has granted permission for the SVCC Foundation to serve alcoholic beverages at their Galas held on campus.

The Foundation is planning another Gala for June 6 and is once again requesting permission to serve alcoholic beverages. We have been assured that the alcoholic beverages will be handled much as they were last year, and the Foundation will acquire the special one-day liquor license and the necessary insurance.

RECOMMENDATION: Board approval to allow the administration and the Foundation to follow applicable statutes, appropriate ICCB guidelines, and SVCC Board Policy 516.01, to serve alcoholic beverages at the Foundation Moonlight Gala to be held on June 6, 1992.



SAUK VALLEY
COMMUNITY
COLLEGE

173 IL Rt. 2, Dixon, IL 61021 • 815/288-5511

MEMORANDUM

March 18, 1992

TO: Dr. Richard Behrendt

FROM: Karen Kylen *KK*

SUBJECT: Foundation Moonlight Gala

The Foundation Moonlight Gala committee is requesting permission to serve alcoholic beverages at their ball scheduled for June 6. As in the past, the Foundation will acquire a special one-day liquor license and the necessary insurance.

I think all would agree that the serving of alcoholic beverages in the past has been handled tastefully and with good sense. The privilege was not abused and those attending the ball enjoyed the beverages.

For Board Meeting
of March 23, 1992

Agenda Item J-2

BOARD POLICY CHANGES

(FIRST READING)

Walt Clevenger and the Computer Task Force are recommending changes to Board Policies 504.01 and 517.01.

RECOMMENDATION: Board approval of the attached changes to Board Policies 504.01 and 517.01 for first reading.



SAUK VALLEY
COMMUNITY
COLLEGE

173 IL Rt. 2, Dixon, IL 61021 • 815/288-5511

MEMORANDUM

March 18, 1992

TO: Dr. Richard Behrendt

FROM: Karen Kylen *KK*

SUBJECT: Recommended Changes to Board Policies

Walt Clevenger, with the endorsement of the Computer Task Force, has recommended changes to Board policies 504.01 and 517.01. The changes along with the rationale for them are outlined on the attached memo from Walt.

I recommend that these changes be submitted to the Board for first reading.

Date: 3/15/92
To: SUCC Board of Trustees
From: Dick Groharing
Subject: March 13/14 ICCTA Meeting

In an attempt to determine whether there is a viable system wide effort to provide multi-cultural education, the Minority Affairs committee examined a list of course offerings obtained from ICCB. It was decided that the information provided by ICCB is inadequate, and directed Mike Monaghan to prepare and send out a questionnaire to all the colleges requesting a list of courses that they consider multi-cultural, minority programs in place, and what their college is doing to enhance the numbers of minority faculty.

The State Relations committee discussed the possible ICCTA legislative agenda. Among a long list to be supported are:

1. Closed sessions for board self-examination
2. Increase bidding requirements from \$5000 to \$10000
3. Move adult education governance from the State Board of Education to ICCB

Included in the list of bills to be defeated are:

1. Efforts to remove management rights by restricting the use of part timers
2. Subdistricting of Boards
3. Any changes in trustees terms

The Executive committee spent time in closed session discussing those who are to be presented awards at the annual meeting in June. The balance of the meeting was spent in argument over the proposed changes in the governance structure of the ICCTA. In a show of hands, only one person was in favor of the plan as presented, though the consensus was that the issue had to be discussed by the entire Board of Representatives.

Arthur Quern, chair of the Illinois Board of Higher Education was the featured speaker at the 9 AM Board of Reps meeting. He spoke of the flat state funding that is expected for fiscal '93, and how the IBHE feels we all need to respond. He essentially spoke of what we are already aware - set priorities, shut down programs/courses that aren't

doing well, reallocate or redirect our resources to viable programs, expect better productivity without sacrificing quality.

The balance of the meeting, aside from informational handouts, was taken up by the debate on the proposed governance changes. Even the standing committee reports were eliminated. The debate lasted the better part of an hour, and as it progressed, it became apparent that virtually everyone was against the proposal. Though no formal vote had been planned at this meeting, and none was taken, the committee was directed by a show of hands not to proceed on each major point in the proposal. Though this method lacked the finality that I was hoping for, it has defused an issue which had taken too much time and effort on everyone's part, by diverting our efforts from what we are supposed to be doing as an association.

ICCTA Calendar:

April 4, Board Building Seminar, Itasca

April 24-25, ICCTA Meeting, Springfield

TREASURER'S REPORT
February 29, 1992

I. INVESTMENTS

FUND -----	LOCATION -----	RATE	DUE DATE	AMOUNT
Education (Pool)	First Bank, Sterling	4.36	3-23-92	\$42,188.74
Education	Ashton Bank & Trust Co.	6.30	8-15-92	100,000.00
Education	Farmers Bank of Sublette	6.30	8-15-92	100,000.00
Education	Smith Trust & Savings (Morrison)	6.30	8-16-92	100,000.00
Education	First National Bank, Sterling	6.10	9-20-92	100,000.00
Operations & Maintenance (Pool)	First Bank, Sterling	4.36	3-23-92	464,653.15
Operations & Maintenance	First National Bank, Amboy	6.85	8-15-92	100,000.00
Operations & Maintenance	Tampico National Bank	6.25	10-12-92	100,000.00
Operations & Maintenance	Milledgeville State Bank	6.00	10-12-92	100,000.00
Working Cash	Sterling Federal Bank	7.45	2-1-92	100,000.00
Working Cash	Community State Bank (Rock Falls)	7.14	2-6-92	100,000.00
Working Cash (Pool)	First Bank, Sterling	4.36	3-23-92	358,219.39
Working Cash	Amcore (Sterling)	5.125	4-1-92	1,020,000.00
Working Cash	Dixon National Bank	6.80	7-5-92	223,380.53
Working Cash	Dixon National Bank	5.10	12-29-92	350,000.00
Building Bond Proceeds	First Bank/Dixon	6.60	5-6-92	100,000.00
Building Bond Proceeds	First National Bank, Sterling	6.80	5-10-92	100,000.00
Building Bond Proceeds	Farmers National Bank, Prophetstown	6.50	5-18-92	100,000.00
Building Bond Proceeds	Dixon National Bank	6.60	5-27-92	225,511.38
Building Bond Proceeds	First National Bank, Sterling	6.80	6-26-92	150,000.00
Building Bond Proceeds	First National Bank, Sterling	6.10	9-25-92	100,000.00
Auxiliary (Student Activities)	Citizens First State Bank, Walnut	6.65	5-15-92	100,000.00

				<u>\$4,233,953.19</u>

II. INTEREST BEARING ACCOUNTS

ACCOUNT/FUND -----	LOCATION -----	RATE ----	AMOUNT -----
Operations and Maintenance			
Trust Account	First National Bank, Sterling	3.75	92,997.29
General Fund	First Bank, Sterling	4.10	574,985.38
Bookstore Fund	First Bank, Sterling	4.10	161,657.38

			<u>\$829,640.05</u>

III. CHECKING ACCOUNTS - NONINTEREST BEARING

ACCOUNT/FUND -----	LOCATION -----	AMOUNT -----
Education	First National Bank, Sterling	\$55,764.17
Payroll - Education	First Bank, Dixon	0.00
Building - Operations & Maintenance	First National Bank, Sterling	1,425.20
Restricted and Federal Funds	First Bank, Sterling	244,396.71

		<u>\$301,586.08</u>

SAUK VALLEY COMMUNITY COLLEGE
STUDENT LOAN FUND
Period Ending 2/29/92
B A L A N C E S H E E T

ASSETS:

Cash in Bank	\$2,234.86	
Notes Receivable	9,750.00	

		\$11,984.86
		=====

LIABILITIES & NET WORTH:

Fund Equity	\$11,995.01	
Net Loss	(10.15)	

		\$11,984.86
		=====

P R O F I T A N D L O S S

INCOME:

Interest Income	\$338.85	
Bad Debts Repaid	370.00	

		\$708.85

EXPENSES:

Bad Debts	\$719.00	

NET LOSS	(\$10.15)	
		=====

SAUK VALLEY COMMUNITY COLLEGE BOOKSTORE

Period Ending 2-29-92

B A L A N C E S H E E T

ASSETS:

Cash in Bank	\$161,681.76
Petty Cash	1,000.00
Accounts Receivable-Educational Fund	0.00
Investments	2,554.01
Inventory 6-30-91	154,713.47
	<u>\$319,949.24</u>
	=====

LIABILITIES & NET WORTH:

Accounts Payable-Student Activity Fund	\$11,666.00
Fund Equity	\$330,010.27
Fund Transfer	0.00
Net Loss	(21,727.03)
	<u>\$319,949.24</u>
	=====

P R O F I T A N D L O S S

INCOME:

Textbook Sales	\$380,539.44
Supply Sales	34,461.32
Miscellaneous Sales	21,651.40
Paperback Sales	9,936.59
Used Book Sales	69,976.62
Sales Tax Collected	29,869.11
Other Income	991.83
Investment Income	907.54
	<u>\$548,333.85</u>

EXPENSES:

Textbooks Purchased	\$366,366.69
Supplies Purchased	31,772.17
Miscellaneous Purchased	15,615.84
Paperbacks Purchased	7,879.89
Used Books Purchased	63,603.73
Sales Tax Paid	29,225.00
Salaries & Wages	39,378.32
Employee Benefits	189.87
Transportation Charges	7,888.26
Supply Expenses	3,290.46
Equipment	390.11
Travel	2,119.49
Telephone	185.05
Dues & Subscriptions	130.00
Other Expense	1,814.86
Over & Under	50.17
Bad Debts	160.97
	<u>\$570,060.88</u>

NET LOSS on a cash basis without regard to inventory
or accounts payable

(\$21,727.03)
=====

Bookstore

February 1 - 29, 1992

Vendor	Ch #	Debit	Amount
Kay Andresen	1001	Book sales	156.80
		Taxes payable	9.80
Richard Linville	1002	Book sales	21.95
		Taxes payable	1.37
Publications U of I	1003	Books purchased	7.00
SVCC Education Fund	1004	Books purchased	60.40
		Transportation	11.01
		Supply expense	103.01
		Telephone	49.70
Tricia Abner	1005	Used books purchased	8.06
Stacy Aiken	1006	Used books purchased	24.15
Ulzime Akiti	1007	Used books purchased	10.65
DeShawn Anderson	1008	Used books purchased	22.43
Cynthia L Bauscher	1009	Used books purchased	28.65
Lori B Berogan	1010	Used books purchased	29.18
Kurt Bogott	1011	Used books purchased	64.61
Monica Brown	1012	Used books purchased	17.40
Denise Carl	1013	Used books purchased	33.08
Marty Crouse	1014	Used books purchased	67.95
Brandy Cross	1015	Used books purchased	51.08
Scott Claudia	1016	Used books purchased	24.68
Janis Dillon	1017	Used books purchased	26.93
Malinda Doty	1018	Used books purchased	14.59
Tina Erikson	1019	Used books purchased	33.71
Tony Fitzpatric	1020	Used books purchased	11.78
Jeffrie Garner	1021	Used books purchased	8.40
Kay Gogerty	1022	Used books purchased	10.05
Ray W Hager	1023	Used books purchased	30.90
Michelle L Halgren	1024	Used books purchased	24.68
Phil Hall	1025	Used books purchased	10.65
Lori Halsey	1026	Used books purchased	69.04
Joleen Hannan	1027	Used books purchased	22.43
Rhonda Hitchcock	1028	Used books purchased	30.90
Tom Hudson	1029	Used books purchased	10.13
Todd Jensen	1030	Used books purchased	23.03
Dawn Kilgore	1031	Used books purchased	25.76
Ryan Kelly	1032	Used books purchased	42.08
Heath Lauritzen	1033	Used books purchased	11.78
Robert LeMoine	1034	Used books purchased	10.05
Tiffany LeMoine	1035	Used books purchased	13.43
Janell Loos	1036	Used books purchased	42.11
Duane Long	1037	Used books purchased	29.14
Blanca G Marruffo	1038	Used books purchased	11.21
Lori Marsili	1039	Used books purchased	23.03
Nancy Meade	1040	Used books purchased	22.43
Aaron W Mullan	1041	Used books purchased	10.05
Sean Mulligan	1042	Used books purchased	12.90
Mike McDaniel	1043	Used books purchased	14.59
Danette Newcomer	1044	Used books purchased	22.43
Suzanne O'Neil	1045	Used books purchased	17.93
Jeanne Roberson	1046	Used books purchased	22.43
Marci Rodriguez	1047	Used books purchased	13.43

Missi Rodriguez	1048	Used books purchased	13.43
Bruce Rumbolz	1049	Used books purchased	26.93
Barry S Schaver	1050	Used books purchased	13.43
Brent Schmall	1051	Used books purchased	6.68
William G Sisler	1052	Used books purchased	20.78
Wilda Smit	1053	Used books purchased	2.18
Terry Swarts	1054	Used books purchased	31.43
Chad D Von Holten	1055	Used books purchased	24.15
Mike Welch	1056	Used books purchased	23.03
John I Willis	1057	Used books purchased	57.26
Amy Wiseman	1058	Used books purchased	37.01
Jennie Withrow	1059	Used books purchased	14.59
Scott Wolf	1060	Used books purchased	23.03
Marco Flores	1061	Used books purchased	9.53
Dorothy A Hehl	1062	Used books purchased	4.43
Gryphon House	1063	Paperbacks purchased	57.36
		Transportation	3.39
American College Testing	1064	Books purchased	125.00
		Transportation	10.00
Industrial Press	1065	Paperbacks purchased	27.96
		Trnsportation	2.73
GPO Chicago Bookstore	1066	Books purchased	28.50
Iowa State Univ Press	1067	Books purchased	23.96
		Transportation	2.18
Hammond	1068	Books purchased	23.80
		Transportation	2.91
F. A. Davis	1069	Books purchased	33.56
		Transportation	2.91
Kendall/Hunt	1070	Books purchased	71.76
		Transportation	2.33
Noname	1071	Books purchased	143.82
		Transportation	4.44
Pract Psych Press	1072	Books purchased	51.80
		Transportation	2.00
Publishers Group West	1073	Books purchased	103.53
		Transportation	5.27
APICS	1074	Books purchased	96.00
Anderson	1075	Books purchased	175.60
		Transportation	4.71
D. C. Heath	1076	Books purchased	22.50
		Transportation	5.02
SVCC-Gerry Harrington	1077	Travel	6.00
Walnut Methodist Church	1078	Book sales	135.65
		Taxes payable	8.47
McGraw Hill	1079	Books purchased	239.95
		Transportation	8.04
Wes` Publishing	1080	Books purchased	409.72
		Transportation	8.02
Glencoe-Macmillan/McGraw	1081	Books purchased	444.02
		Transportation	9.58
Amer Tech Publishing	1082	Books purchased	24.48
		Transportation	2.07
Dushkin	1083	Books purchased	43.80
		Transp-rtation	4.13
NACSCORP	1084	Books purchased	89.55
		Transportation	2.87

John Wiley	1085	Books purchased	199.60
		Transportation	5.31
Houghton Mifflin	1086	Books purchased	203.85
		Transportation	3.54
Addison Wesley	1087	Books purchased	31.92
		Paperbacks purchased	20.80
		Transportation	4.86
Dearborn Financial Pub	1088	Books purchased	19.00
		Transportation	2.08
Delmar Publishing	1089	Books purchased	589.61
		Transportation	15.21
Harper Collins	1090	Books purchased	515.29
		Transportation	10.13
College Bk. Co. of Calif.	1091	Used book purchased	8.23
		Transportation	2.93
Douglas Stewart	1092	Supplies purchased	333.77
		Transportation	8.64
Login	1093	Books purchased	64.40
		Paperbacks purchased	233.96
		Transportation	9.87
Little Brown & Co	1094	Books purchased	33.44
		Transportation	31.73
Entec	1095	Supplies purchased	589.98
Grab On Products	1096	Supplies purchased	56.00
Macmillan	1097	Books purchased	393.75
		Paperbacks purchased	18.36
		Transportation	12.35
Harcourt Brace Jov	1098	Books purchased	622.50
		Transportation	10.78
South-Western Publ	1099	Books purchased	1,228.00
		Transportation	14.01
SVCC Payroll	1100	Salaries & Wages	2,913.85
ASQC	1101	Books purchased	215.64
		Transportation	17.25
National Fire Protection	1102	Books purchased	32.50
		Transportation	4.15
Login Bros. Book Co.	1103	Books purchased	56.51
		Paperbacks purchased	237.13
		Transportation	9.11
South-Western Publ.	1104	Books purchased	210.00
		Transportation	3.93
Macmillan Publ.	1105	Books purchased	354.75
		Transportation	20.02
NASCORP	1106	Books purchased	238.80
		Paperbacks purchased	315.10
		Transportation	33.77
Dearborn Financial	1107	Books purchased	169.55
		Transportation	6.65
McGraw-Hill Pub	1108	Books purchased	298.51
		Transportation	9.82
American Technical	1109	Books purchased	23.96
		Transportation	1.97
Anderson Publ.	1110	Books purchased	21.95
		Transportation	4.01
Campus Publ.	1111	Books purchased	64.35
		Transportation	8.22

HarperCollins College Publ.	1112	Books purchased	22.91
		Transportation	2.07
Delmar	1113	Books purchased	99.90
		Transportation	2.71
Entec	1114	Supplies purchased	57.51
Contemporary Books	1115	Paperbacks purchased	25.61
		Transportation	2.07
Bennett Travel	1116	Travel	628.00
North American Recreation	1117	Misc. purchased	125.15
		Transportation	6.26
West Publ	1118	Books purchased	37.92
		Transportation	2.34
John Wiley Publ.	1119	Books purchased	150.28
		Transportation	6.72
SVCC Bookstore	1120	Transfer of funds	50.01
IL Dept. of Revenue	1121	Sales tax payable	8,194.00
Jacque Foust	1122	Used book purchased	21.38
Petty Cash	1123	P.C. (book buy)	296.50
SVCC Insurance Fund	1124	Employee benefits	189.87
Il Assoc. College Stores	1125	Travel	170.00
Action Wholesale Serv.	1126	Supplies purchased	150.82
Alzheimer's Publ.	1127	Books purchased	180.00
		Transportation	8.00
Microref Publ.	1128	Paperbacks purchased	109.73
		Transportation	3.15
Am. Bankers Assoc. Publ.	1129	Books purchased	378.00
		Transportation	28.00
Master Teacher Publ.	1130	Paperbacks purchased	19.96
		Transportation	3.50
Lab Volt Systems Publ.	1131	Books purchased	80.00
		Transportation	4.21
SVCC Payroll	1132	Salaries & Wages	2,068.40
Janet Curfman	1133	Travel	120.73
Artcraft	1134	Supplies purchased	279.60
		Transportation	11.76
NACS-Annual Meeting Reg.	1135	Travel	510.00

TOTAL EXPENDITURES

\$ 28,864.71

SAUK VALLEY COMMUNITY COLLEGE
STUDENT ACTIVITY FUND
February 29, 1992

Balance on Hand - February 1, 1992	\$392,139.12
Journal Entries	(239,972.96)
February Receipts 1992	110,468.63
<div>TOTAL FUNDS AVAILABLE DURING FEBRUARY</div>	\$262,634.79
Cash Disbursements - February, 1992	127,009.59
Balance on Hand - February 29, 1992	\$135,625.20

RESTRICTED/FEDERAL FUNDS
February 29, 1992

Balance on Hand - February 1, 1992	\$147,801.25
Journal Entries	1,730.69
February Receipts 1992	136,447.15
<div>TOTAL FUNDS AVAILABLE DURING FEBRUARY</div>	\$285,979.09
Cash Disbursements - February, 1992	41,582.38
Balance on Hand - February 29, 1992	\$244,396.71

STATEMENT OF INCOME & EXPENSE
STUDENT ACTIVITY FUND

ACTIVITIES

Student Activity Assessments	\$28,530.03
Athletic Income	2,461.00
Drama Income	813.25
Student Activity Income	1,920.20
Student Activity Income-Restricted Purp. Source	0.00
Student Activity Income - Bookstore Source	0.00
Sauk Talk Income	709.83
Cash Over & Under	(4.13)
Other Student Activity Income	12.02
	\$34,442.20

TOTAL INCOME

	BUDGET	EXPENSE	
Athletic Expense	50,787.	\$23,750.13	
Cheerleader & Pom Pon Squad	4,500.	3,703.41	
Speech Act. & Readers Theatre	5,500.	3,577.14	
Drama Expense	6,000.	3,813.06	
Music Expense	3,750.	1,592.39	
Student Act. Expense	15,500.	8,445.34	
Student Senate Expense	2,000.	1,055.64	
Women's Intercollegiate Exp.	40,000.	26,569.06	
VCC Clubs	300.	0.00	
Sauk Talk	7,000.	5,786.02	
Intramurals	500.	110.00	
Contingencies/Non-Budgeted	0.	0.00	
	\$135,850.	TOTAL EXPENSE	\$78,402.19

Excess of Expenditures over Revenues as of February 29, 1992	(\$43,959.99)
-----------------------------------------------------------------	---------------

STATEMENT OF ASSETS AND LIABILITIES

ASSETS	REVOLVING AGENCY FUND LIABILITIES	AMOUNT
Cash in Bank/ General Fnds \$135,625.20	Due from Other Fund-St. Act. (\$6,112.75)	
	Due to Rest. & Federal Fund 6,112.75	
	Due to Educational Fund 0.00	
Cash in Bank/ Rest/Fed Fnds 244,396.71	Due to Oper. & Maint. Funds 0.00	
	Due to Bookstore 0.00	
	Due Insurance Fund 0.00	
Petty Cash 2,783.00	Due to Student Loan Fund 0.00	
	Resident Student Tuition 724,565.00	
Accts. Rec. 313,317.68	Resident Tuition Refunds (35,936.80)	
	Out of District Tuition 390.24	
Investments 100,000.00	Lab Fees 17,572.00	
	Lab Fees Refunds (1,236.80)	
	Accounts Payable 0.00	
		\$705,353.64

RESTRICTED AGENCY FUND LIABILITIES

Child Care Operations	(\$7,255.77)
Parking	11,152.61
Recreation Room Fund	3,501.82
Student Locker Fund	1,002.51
Building Fairness Grant	0.00
Community Services	51,340.36
Collegiate Choir	334.48
Spec Serv For Disadv. Inc-FY 91	88,618.07
Spec Serv For Disadv. Exp-FY 91	(88,618.07)
Spec Serv for Disadv. Inc-FY 92	44,000.00
Spec Serv for Disadv. Exp-FY 92	(64,753.55)
HITS Grant - Clear Creek Frnture	0.00
Special Population Gt. FY 91	(365.59)
Special Population Gt. FY 92	(2,777.90)
Perkins Gt. FY 92	(1,494.27)
Northwest Passage	0.00
Econ. Dev. Gt. II FY 92	8,563.74
Econ. Dev. Gt. Inc. FY 92	30,069.00
Econ. Dev. Gt. Exp. FY 92	(46,266.78)
Student Clubs	2,929.96
Adult Learning Book Charges	943.80
College Van	7,136.62
VIP/PPP	(907.90)
Student Serv/Special Projects	107,045.40
SVCC Athletic Booster Club	8,789.09
DCC/Income/FY 92	257,260.50
DCC/Expense/FY 92	(260,690.64)
Voc. Educ. Adult Training	0.00
Ill. Interp. Workshop	248.25
SVCC Foundation	(13.77)
Sauk Area Arts Council	0.00
Sm. Bus. Dev. Gt./Inc./FY 92	11,750.00
Sm. Bus. Dev. Gt./Exp./FY 92	(15,420.67)
VITAL - Secy of State FY 92	(769.66)
Anna Johnson Estate	270.68
Nursing Uniforms	0.00
LPN Supplies	527.11

Miscellaneous Account	(188.75)	
IL Personal Serv. Withholding	0.00	
LRC Gt. Dept. of Educ. FY 90	3,612.65	
DCC/Sales	1,562.00	
Advanced Tech Gt. FY 92	24,263.50	
Title III Income/FY 91	359,218.06	
Title III St Serv Ret/Exp FY91	(103,295.94)	
Title III - Nrs. Cln Lab/Exp FY91	(117,899.77)	
Title III - Proj. Admin/Exp FY91	(45,098.30)	
Title III - Eng Comp Lab/Exp FY91	(92,924.05)	
Title III - Income/FY 92	143,275.00	
Title III - St Serv Ret/Exp FY92	(52,038.60)	
Title III - Nrs. Cln Lab/Exp FY92	(41,234.51)	
Title III - Proj. Admin/Exp FY92	(17,649.55)	
Title III - Eng Comp Lab/Exp FY92	(90,582.05)	
Tech-Prep Planning Gt.	12,902.33	
Workstudy Awards Rec. 1991-92	(28,151.00)	
Workstudy Awards Cap. 1991-92	171,837.00	
Workstudy Awards Paid 1991-92	(158,479.83)	
EOG Awards Rec. 1991-92	(6,527.58)	
EOG Awards Capital 1991-92	64,459.00	
EOG Awards Paid 1991-92	(57,931.42)	
PELL Awards Rec. 1991-92	(259,028.78)	
PELL Awards Capital 1991-92	743,419.00	
PELL Awards Paid 1991-92	(458,762.06)	
Inactive Federal Grants	(9,646.21)	
Retiree Health/Income	7,069.40	
Retiree Health/Expense	(6,039.81)	132,289.16

FUND EQUITY

July 1, 1991	\$2,439.78	
Excess of Expenditures over Revenues as of February 29, 1992	(43,959.99)	(\$41,520.21)

-TOTAL ASSETS	\$796,122.59	TOTAL LIABILITIES & NET WORTH	\$796,122.59
---------------	--------------	-------------------------------	--------------

BUSINESS OFFICE

ACCOUNT LISTING BY ACCOUNT

NT	DATE	TICKET	NAME	DEBIT	CREDIT
000111100	022992	2309	BRANDON MARILYN	0.00	502.00
001111100	022992	2318	BYAR WILLIAM	0.00	273.74
000111100	022992	2319	DAVIS DARREL	0.00	256.08
000111100	022992	2287	DREW JANELLE	0.00	124.05
000111100	022992	2310	DYKHUIZEN BARRY	0.00	425.00
000111100	022992	2320	EDISON ROBERT	0.00	256.08
000111100	022992	2288	FOWKES JENNIFER L	0.00	375.00
000111100	022992	2289	FOWKES SEAN	0.00	375.00
000111100	022992	2311	FRANK MONICA L	0.00	654.00
000111100	022992	2321	FREDERICKS LAUREN	0.00	273.74
000111100	022992	2322	FRIEDRICHs ALICE	0.00	256.08
000111100	022992	2290	GROSSMAN ALLAN P	0.00	825.00
000111100	022992	2322	GUNTLE GLADYS	0.00	273.74
000111100	022992	2322	HAIN CAROL	0.00	273.74
000111100	022992	2322	HASTINGS HARRIET	0.00	256.08
000111100	022992	2326	HAYNER HENRY	0.00	256.08
000111100	022992	2291	HICKS SANDRA E	0.00	499.50
000111100	022992	2292	HILTY CHESTER D	0.00	575.00
000111100	022992	2327	HOLMBERG CLARYCE	0.00	256.08
000111100	022992	2293	KAMMAN ROBERT P	0.00	412.00
000111100	022992	2328	KELLER STUART Y SR	0.00	273.74
000111100	022992	2329	LENOX JOHN	0.00	256.08
000111100	022992	2294	MARTINEZ LAURA L	0.00	175.00
000111100	022992	2330	MERLO LENA	0.00	256.08
000111100	022992	2312	METKA STACEY A	0.00	488.00
000011100	022992	2295	MOLAND LYNN M	0.00	1005.00
000011100	022992	2296	MOLINA DAVID E	0.00	319.00
001111100	022992	2331	MURRAY LEE	0.00	256.08
000011100	022992	2297	NAJERA OFELIA E	0.00	619.00
000011100	022992	2332	NELSON HAROLD	0.00	144.04
000011100	022992	2333	OSBORN PHILLIP	0.00	256.08
000011100	022992	2313	PALUMBO RONALD	0.00	1005.00
000011100	022992	2298	RAY SONDR A	0.00	844.00
000011100	022992	2334	RICE ELMER	0.00	256.08
000011100	022992	2299	SALMON LUIS E	0.00	825.00
000011100	022992	2335	SCHEFFLER GILBERT	0.00	256.08
000011100	022992	2300	SEYDEL DONALD G IV	0.00	722.22
000011100	022992	2301	SPINELLI JAMES J	0.00	412.00
000011100	022992	2336	STOUDT ARDELLA	0.00	273.74
000011100	022992	2306	STUDENT LOAN FUND	0.00	304.23
000011100	022992	2217	SVCC ED FUND	0.00	10949.73
000011100	022992	2316	SVCC ED FUND	0.00	9087.84
000011100	022992	2339	SVCC GENERAL FUND	0.00	508.21
000011100	022992	1316	SVCC RESTRICTED & FEDERAL FUNDS	956.65	0.00
000011100	022992	2315	SVCC STUDENT LOAN FUND	0.00	100.00
000011100	022992	2302	TIMM KAREN S	0.00	237.00
000011100	022992	2303	VERUCCHI DAWN	0.00	900.00
000011100	022992	2218	VOID CHECK #2218 THRU CHECK #2286	0.00	0.00
000011100	022992	2337	WEIDMAN BYRON	0.00	256.08
000011100	022992	2338	WELCH NORM	0.00	256.08
000011100	022992	2304	WHITE PAMELA K	0.00	900.00
000011100	022992	2305	WILLIS BONITA K	0.00	825.00
000011100	022992	2314	WITMER RICHARD	0.00	394.00

IN BANK - RESTR & FED FUNDS

DEBIT CREDIT

956.65 41582.38

BUSINESS OFFICE

ACCOUNT LISTING BY ACCOUNT

IT	DATE	TICKET	NAME	DEBIT	CREDIT
000111010	022992	1072	THE DAILY GAZETTE..ADMIN	0.00	32.04
0111010	022992	1073	THE OHIO STATE UNIVERSITY..ADMIN	0.00	25.52
000111010	022992	1098	THE REGISTER STAR	0.00	46.17
000111010	022992	1275	THOMAS DONNA	0.00	122.50
000111010	022992	1292	THOME JUDY	0.00	30.00
000111010	022992	1291	THOMPSON JAN	0.00	30.00
000111010	022992	1250	THOMSON CHAMBER OF COMMERCE	0.00	35.00
000111010	022992	1290	THORNGREN DAVID	0.00	60.00
000111010	022992	1019	TRIBLEY KEVIN	0.00	300.00
000111010	022992	1116	TWIN CITY TRAVEL	0.00	490.22
000111010	022992	1306	UPWARD MOBILITY PROGRAM	0.00	69.60
000111010	022992	1182	USC/UNIVERSITY OF SOUTH CAROLINA	0.00	590.00
000111010	022992	1307	VADER DARCI	0.00	348.00
000111010	022992	1104	VAN HOWE WILLIAM	0.00	130.00
000111010	022992	1153	VANCIL DAVID	0.00	10.00
000111010	022992	1136	VANLERBURGHE AL	0.00	55.00
000111010	022992	1289	VAUGHAN SHARON	0.00	30.00
000111010	022992	1128	VENDERSCHAAF SHANI LEE	0.00	68.00
000111010	022992	1041	VOID CHECK	0.00	0.00
000111010	022992	1052	VOID CHECK	0.00	0.00
000111010	022992	1199	VOID CHECK	0.00	0.00
000111010	022992	1251	VOID CHECK	0.00	0.00
000111010	022992	1017	WAGNER MELINDA	0.00	87.00
000111010	022992	1288	WALLACE JOYCE	0.00	30.00
000111010	022992	1202	WALNUT CHAMBER OF COMMERCE	0.00	15.00
000111010	022992	1181	WARREN BRIDGETTE	0.00	10.00
000111010	022992	1082	WARREN RADIO CO..EET	0.00	3.40
000111010	022992	1268	WELCH CONNIE	0.00	30.00
000111010	022992	1258	WENZEL ALAN	0.00	200.00
000111010	022992	1090	WESCOTT SHARON	0.00	96.80
000111010	022992	1216	WHITE PAMELA	0.00	5.00
000111010	022992	1287	WILKINSON MARY ELLEN	0.00	30.00
000111010	022992	1286	WILLARD JUDY	0.00	30.00
000111010	022992	1026	WILLIAM & MARY COMPUTER CTR	0.00	132.00
000111010	022992	1207	WILLIAM & MARY COMPUTER CTR..BIS	0.00	7.00
000111010	022992	1030	WILLIAMS SUSAN	0.00	62.00
000111010	022992	1285	WILLIAMS SUSAN	0.00	60.00
000111010	022992	1200	WILSON ANGIE	0.00	59.59
000111010	022992	1016	WILSON KIM	0.00	40.00
000111010	022992	1201	WITMER LADONNA	0.00	5.26
000111010	022992	1198	WITMER SUE	0.00	12.28
000111010	022992	1126	WITTBECKER STEVEN	0.00	188.75
000111010	022992	1118	WNS PUBLICATIONS NEW - SENTIEL REV	0.00	144.45
000111010	022992	1123	WOLF LOIS	0.00	10.00
000111010	022992	1096	WOLOHAN LUMBER	0.00	33.08
000111010	022992	1283	WOOD CHARLES JR	0.00	30.00
000111010	022992	1191	YOUNG HEATHER	0.00	30.00

N BANK..GEN FUND

53325.83 127009.59

000111100	022992	2307	ALLANN CHRISTOPHER	0.00	162.00
000111100	022992	2308	ANGLE BRIAN	0.00	502.00
000111100	022992	2317	ASP DOLORES	0.00	160.00

BUSINESS OFFICE

ACCOUNT LISTING BY ACCOUNT

COUNT	DATE	TICKET	NAME	DEBIT	CREDIT
00000111010	022992	1147	PARK SEED WHOLESALE..ADMIN	0.00	67.70
0000111010	022992	1010	PAXTON/PATTERSON..CON	0.00	40.65
000000111010	022992	1266	PECK ROBERT	0.00	30.00
000000111010	022992	1107	PEVONKA ED	0.00	55.00
000000111010	022992	1111	PRESCOTT'S	0.00	40.00
000000111010	022992	1161	PROFESSIONAL DEV SOFTWARE	0.00	1206.00
000000111010	022992	1167	PRYOR RESOURCES INC..HRT	0.00	59.00
000000111010	022992	1039	PSI RESEARCH/EXECARDS	0.00	37.41
000000111010	022992	1097	QUAD CITY TIMES	0.00	33.67
000000111010	022992	1248	QUECKBOERNER DAVID	0.00	60.00
000000111010	022992	1151	RACKET DOCTOR	0.00	100.00
000000111010	022992	1031	RADIO SHACK	0.00	13.45
000000111010	022992	1089	REAVY REY	0.00	100.80
000000111010	022992	1215	RELIABLE SUPPLY CORPORATION..AUT	0.00	37.71
000000111010	022992	1249	RICHARDSON DAWN	0.00	30.00
000000111010	022992	1278	ROCK RIVER PROVISION	0.00	27.98
000000111010	022992	1314	ROCK VALLEY COLLEGE	0.00	30.00
000000111010	022992	1084	ROYSTER BARRY	0.00	300.00
000000111010	022992	1274	RUMBOLZ CHARYL	0.00	344.80
000000111010	022992	1194	RYDER STUDENT TRANS SERVICES	0.00	36.00
000000111010	022992	1294	RYLANDER JOHN W	0.00	30.00
000000111010	022992	1102	SALIENT SOFTWARE INC	0.00	135.90
000000111010	022992	1150	SANNIER WILHEM COMPANY	0.00	210.42
000000111010	022992	27131	SAUK VALLEY COMM COLL GENERAL FUND	53325.83	0.00
000000111010	022992	1011	SBM BUS EQUIP CTR..ADMIN	0.00	482.78
000000111010	022992	1213	SBM BUS EQUIP CTR..ADMIN	0.00	306.00
000000111010	022992	1075	SBM BUSINESS EQUIPMENT CTR..HRT	0.00	52.45
000000111010	022992	1269	SCHMIDT JUDITH	0.00	30.00
000000111010	022992	1265	SCHWINGLE PAUL	0.00	30.00
000000111010	022992	1020	SEIFERT DARCI E L	0.00	87.00
000000111010	022992	1302	SELF HELP ENTERPRISES PRINT SHOP	0.00	30.00
000000111010	022992	1028	SHAWVER PRESS	0.00	84.50
000000111010	022992	1115	SHAWVER PRESS INC	0.00	31.70
000000111010	022992	1197	SHELL OIL COMPANY	0.00	82.30
000000111010	022992	1276	SHELL OIL COMPANY	0.00	38.69
000000111010	022992	1154	SIMMONS TERRY	0.00	0.80
000000111010	022992	1057	SNAP-ON TOOLS..ADMIN	0.00	32.00
000000111010	022992	1070	SNAP-ON TOOLS..ADMIN	0.00	3.88
000000111010	022992	1259	SPECIAL OCCASIONS	0.00	195.85
000000111010	022992	1221	SPORTS DEPOT INC	0.00	1103.20
000000111010	022992	1281	SQUIRES JACK	0.00	22.97
000000111010	022992	1293	STABENOW VALERIE	0.00	60.00
000000111010	022992	1042	STARR TOM	0.00	55.00
000000111010	022992	1068	STATE UNIVERSITIES RETIREMENT SYSTE	0.00	1197.12
000000111010	022992	1180	STATE UNIVERSITIES RETIREMENT SYSTE	0.00	1314.23
000000111010	022992	1076	STATE UNIVERSITIES RETIREMENT SYSTE	0.00	110.69
000000111010	022992	1120	STENZEL KAREN L	0.00	1.00
000000111010	022992	1035	STUMPS	0.00	122.29
000000111010	022992	1100	SUGIRI WIDJAJA	0.00	2.00
000000111010	022992	1050	SVCC BOOKSTORE..PURCHASES 1/92	0.00	349.08
000000111010	022992	1196	SVCC BOOKSTORE..STUDENT BOOKS	0.00	10132.62
000000111010	022992	1069	SVCC PAYROLL FUND..02-15-92	0.00	33277.66
0000111010	022992	1179	SVCC PAYROLL FUND..02-29-92	0.00	39240.83
000000111010	022992	1316	SVCC RESTRICTED & FEDERAL FUNDS	0.00	956.65
000000111010	022992	1060	SVCC STUDENT LOAN FUND	0.00	1692.35

ACCOUNT LISTING BY ACCOUNT

ACCOUNT	DATE	TICKET	NAME	DEBIT	CREDIT
0000000111010	022992	1239	JOHNSON JERRY	0.00	30.00
	022992	1240	JOHNSON KENNETH	0.00	30.00
0000000111010	022992	1051	KENTUCKY NETWORK/ENTERPRISE DIVISIO	0.00	150.00
0000000111010	022992	1085	KETTER BRIAN	0.00	174.00
0000000111010	022992	1135	KIM LINDA	0.00	138.10
0000000111010	022992	1094	KINKEAD GORDON	0.00	200.00
0000000111010	022992	1241	KITZMILLER MARNA	0.00	60.00
0000000111010	022992	1040	KLAUS RADIO INC	0.00	549.94
0000000111010	022992	1184	KNIPE DARLENE	0.00	20.76
0000000111010	022992	1109	KROGER COMPANY	0.00	74.63
0000000111010	022992	1162	KROGER COMPANY	0.00	65.42
0000000111010	022992	1192	KROGER COMPANY	0.00	53.09
0000000111010	022992	1142	KRUSINSKI RONALD R	0.00	2325.54
0000000111010	022992	1242	LANGE MARILYN	0.00	30.00
0000000111010	022992	1273	LAVALLIE DAWN	0.00	30.00
0000000111010	022992	1254	LAWRENCE JIM	0.00	18.77
0000000111010	022992	1113	LESEMAN JOLENE	0.00	301.10
0000000111010	022992	1185	LESEMAN JOLENE	0.00	327.40
0000000111010	022992	1317	LESEMAN JOLENE	0.00	260.86
0000000111010	022992	1032	LESEMAN JOLENE	0.00	456.40
0000000111010	022992	1190	LIE PETER	0.00	1.00
0000000111010	022992	1217	LITTLE CHOCOLATIER	0.00	15.00
0000000111010	022992	1243	LOOS ARLYN	0.00	60.00
0000000111010	022992	1256	LOVEKIN CAROL	0.00	61.68
0000000111010	022992	1244	LUDWIG BILL	0.00	60.00
0000000111010	022992	1083	MACHEN ROBERTA	0.00	494.00
0000000111010	022992	1308	MACWAREHOUSE	0.00	494.00
0000000111010	022992	1245	MAHAR SANDRA	0.00	60.00
0000000111010	022992	1018	MAPLESIDE MANOR	0.00	192.00
0000000111010	022992	1037	MARCRAFT INTERNATIONAL CORP	0.00	113.39
0000000111010	022992	1178	MATHIS JERRY	0.00	1200.00
0000000111010	022992	1252	MATHIS JERRY	0.00	1600.00
0000000111010	022992	1053	MCCORMICK'S..ADMIN	0.00	188.78
0000000111010	022992	1168	MCCORMICK'S..ADMIN	0.00	3.49
0000000111010	022992	1263	MCCORMICKS	0.00	135.50
0000000111010	022992	1043	MCGRATH STEVE	0.00	55.00
0000000111010	022992	1160	MEDCOM INC	0.00	593.90
0000000111010	022992	1145	MERIDIAN EDUCATION CORPORATION..AUT	0.00	201.40
0000000111010	022992	1186	MICHIGAN TECHNOLOGICAL UNIVERSITY	0.00	20.00
0000000111010	022992	1280	MICROFRONTIER	0.00	204.00
0000000111010	022992	1008	MID-AMERICAN GROWERS..ADMIN	0.00	437.50
0000000111010	022992	1025	MIDWEST PUBLISHERS SUPPLY CO	0.00	295.30
0000000111010	022992	1205	MILLER SPORTS CENTER..SET	0.00	70.20
0000000111010	022992	1103	MILLIKEN PUBLISHING CO	0.00	1273.43
0000000111010	022992	1045	MILLS BILL	0.00	55.00
0000000111010	022992	1195	MILWAUKEE AREA TECHNICAL COLLEGE	0.00	25.00
0000000111010	022992	1246	NADEAU MIKE	0.00	60.00
0000000111010	022992	1054	NAPA AUTO PARTS..DONAHUE AUTO SUPP	0.00	26.46
0000000111010	022992	1218	NATIONAL HEALTH SUPPLY CO	0.00	104.98
0000000111010	022992	1247	NELSON CAROLYN	0.00	60.00
0000000111010	022992	1004	NEWS TRANSCRIPTS..SET	0.00	5.00
0000000111010	022992	1095	NIGHTINGALE UNIFORM COMPANY	0.00	102.90
0000000111010	022992	1036	OZARKS/FLINT HILLS PERFORMANCE FEST	0.00	225.00
0000000111010	022992	1038	PAGE GAYE	0.00	300.00
0000000111010	022992	1187	PALUMBO FRANK	0.00	23.38

BUSINESS OFFICE

ACCOUNT LISTING BY ACCOUNT

ACCOUNT	DATE	TICKET	NAME	DEBIT	CREDIT
000000111010	022992	1022	DAMHOFF RUSS	0.00	122.00
000000111010	022992	1134	DAMHOFF RUSS	0.00	39.60
000000111010	022992	1148	DAMHOFF RUSS	0.00	136.30
0000000111010	022992	1105	DAMHOFF RUSS	0.00	180.00
0000000111010	022992	1279	DAMHOFF RUSS	0.00	209.29
0000000111010	022992	1261	DANEHY JOHN	0.00	60.00
0000000111010	022992	1230	DAVIS JERRY J	0.00	30.00
0000000111010	022992	1219	DAWSON DAVID	0.00	175.00
0000000111010	022992	1231	DEPASQUALE TOM	0.00	30.00
0000000111010	022992	1112	DIXON TELEGRAPH	0.00	86.40
0000000111010	022992	1119	DIXON TELEGRAPH	0.00	23.04
0000000111010	022992	1313	DIXON TELEGRAPH	0.00	1385.70
0000000111010	022992	1071	DIXON TELEGRAPH..ADMIN	0.00	34.56
0000000111010	022992	1099	DOMINO'S PIZZA	0.00	189.00
0000000111010	022992	1024	DRANE PAULA	0.00	35.97
0000000111010	022992	1272	DRUCE JUDI	0.00	15.00
0000000111010	022992	1014	DUFFY EDWARD F	0.00	169.75
0000000111010	022992	1193	EASTERN IL UNIV..NON-CREDIT PROGRAM	0.00	180.00
0000000111010	022992	1005	EDUCATIONAL VIDEO NETWORK..AUT	0.00	53.95
0000000111010	022992	1131	EDWARDS LISA	0.00	58.70
0000000111010	022992	1233	FENSTERMAN GLENN	0.00	30.00
0000000111010	022992	1270	FLAMMANG BARB	0.00	30.00
0000000111010	022992	1056	FLORIST PRODUCTS..ADMIN	0.00	371.84
0000000111010	022992	1108	FORMAN ERIC	0.00	58.00
0000000111010	022992	1232	FREIDHOF LEONARD	0.00	30.00
0000000111010	022992	1044	FRITTS JOHN	0.00	55.00
0000000111010	022992	1271	GANCZAK EDWARD	0.00	30.00
0000000111010	022992	1234	GEMENY ROBERT	0.00	60.00
0000000111010	022992	1130	GIESON HEATH	0.00	11.50
0000000111010	022992	1284	GILPATRICK KEVIN	0.00	408.90
0000000111010	022992	1235	GOFF ROBERT	0.00	60.00
0000000111010	022992	1220	GOLDEN CORRAL #519	0.00	109.09
0000000111010	022992	1158	GOSPODARCZYK MARY	0.00	57.72
0000000111010	022992	1183	GOSPODARCZYK THOMAS	0.00	34.78
0000000111010	022992	1236	GRETH LAWRENCE	0.00	60.00
0000000111010	022992	1152	GRIMES MICHELLE	0.00	245.00
0000000111010	022992	1129	HALL ALICIA	0.00	30.00
0000000111010	022992	1222	HALL DORIS	0.00	12.10
0000000111010	022992	1029	HALL ZOLLIE W	0.00	160.60
0000000111010	022992	1101	HALL ZOLLIE W	0.00	241.85
0000000111010	022992	1237	HARTMAN LEANDRA	0.00	30.00
0000000111010	022992	1092	HARUANANI FAIZA	0.00	60.00
0000000111010	022992	1047	HEARLD CLINTON	0.00	13.92
0000000111010	022992	1122	HENNINGSEN NANCY	0.00	30.00
0000000111010	022992	1155	HENSON DANIEL J	0.00	15.40
0000000111010	022992	1267	HOFFMILLER MARGARET	0.00	30.00
0000000111010	022992	1088	HOHLEN KENT	0.00	116.00
0000000111010	022992	1027	HOLCOMB NANCY	0.00	3.00
0000000111010	022992	1163	HUDSON BRIAN	0.00	63.00
0000000111010	022992	1238	HUGHES BRENT	0.00	60.00
0000000111010	022992	1277	IBM CORP	0.00	1876.00
0000000111010	022992	1301	ILLINOIS CHAMBER	0.00	60.00
0000000111010	022992	1063	ILLINOIS CORRECTIONAL ED ASSOC..ADM	0.00	25.00
0000000111010	022992	1015	ILLINOIS DEPARTMENT OF REVENUE	0.00	5.25
0000000111010	022992	1034	IMAGE CLUB GRAPHICS, INC	0.00	159.00

SAUK VALLEY COLLEGE
BUSINESS OFFICE

PAGE 1

ACCOUNT LISTING BY ACCOUNT					
ACCOUNT	DATE	TICKET	NAME	DEBIT	CREDIT
000111000	022992	27131	SAUK VALLEY COMM COLL GENERAL FUND	0.00	53325.83
BANK					
				0.00	53325.83
0000111010	022992	1009	A.H. HUMMERT SEED CO..ADMIN	0.00	67.23
0000111010	022992	1117	AAA PHOTOGRAPHIC	0.00	56.10
0000111010	022992	1282	AAA PHOTOGRAPHIC	0.00	13.75
0000111010	022992	1074	ABRACADATA LTD..ADMIN	0.00	106.95
0000111010	022992	1206	ABRACADATA LTD..ADMIN	0.00	36.95
0000111010	022992	1007	ACE HARDWARE..AUT	0.00	13.98
0000111010	022992	1257	AHO DAN	0.00	200.00
0000111010	022992	1223	ALEGRA EDWARD	0.00	30.00
0000111010	022992	1061	ALLEN DAVID LEE	0.00	550.00
0000111010	022992	1156	ALLEN KATHLEEN	0.00	51.72
0000111010	022992	1264	ALLEN WILLIAM	0.00	29.00
0000111010	022992	1046	AMOCO OIL COMPANY	0.00	19.55
0000111010	022992	1006	ASAP SOFTWARE EXPRESS.BIS	0.00	89.99
0000111010	022992	1169	ASAP SOFTWARE..BIS	0.00	4.50
0000111010	022992	1021	BAKER CARLEEN	0.00	10.00
0000111010	022992	1224	BAKER MAURICE J	0.00	60.00
0000111010	022992	1146	BALL SEED CO..ADMIN	0.00	144.70
0000111010	022992	1255	BALLOM KENNY	0.00	109.00
0000111010	022992	1132	BARBKNECKT ARNOLD B	0.00	650.00
0000111010	022992	1023	BENNETT LORI	0.00	12.75
0000111010	022992	1315	BENNETT LORI	0.00	21.20
0000111010	022992	1260	BERGSTROM RALPH	0.00	60.00
0000111010	022992	1087	BEST BECKY	0.00	377.00
0000111010	022992	1214	BILL DORAN COMPANY..ADMIN	0.00	114.78
0000111010	022992	1228	BLISS JEAN	0.00	60.00
0000111010	022992	1189	BONTZ GREGORY	0.00	8.00
0000111010	022992	1225	BRAIDA JAMES	0.00	30.00
0000111010	022992	1164	BREED THOMAS	0.00	613.60
0000111010	022992	1086	BRUKETTA ANDREW	0.00	92.80
0000111010	022992	1091	BUSH VIRGIL	0.00	54.40
0000111010	022992	1159	BYAR CHRISTINE	0.00	145.31
0000111010	022992	1262	BYAR CHRISTINE	0.00	42.21
0000111010	022992	1226	CANNON PAUL	0.00	30.00
0000111010	022992	1114	CARLSON DICK	0.00	55.00
0000111010	022992	1055	CARTER LUMBER..CON	0.00	213.61
0000111010	022992	1253	CENTRAL TELEPHONE CO	0.00	27.39
0000111010	022992	1106	CESAREK LOU	0.00	55.00
0000111010	022992	1121	CHICAGO HILTON HOTEL	0.00	192.00
0000111010	022992	1227	CHIDLEY LARRY	0.00	30.00
0000111010	022992	1229	CHRISTIAN RONALD E	0.00	30.00
0000111010	022992	1166	CIRCLE OAK PRODUCTIONS INC..CON	0.00	495.00
0000111010	022992	1048	CONSOLIDATED MANAGEMENT	0.00	78.00
0000111010	022992	1110	CONSOLIDATED MANAGEMENT	0.00	11.25
0000111010	022992	1188	CONSOLIDATED MANAGEMENT	0.00	36.00
0000111010	022992	1093	CRISHAM JOSEPH	0.00	90.00
0000111010	022992	1157	CROWSON CARLA	0.00	53.72
0000111010	022992	1033	CURRICULUM ASSOCIATES INC	0.00	63.91
0000111010	022992	1149	DAILY GAZETTE	0.00	226.94
0000111010	022992	1049	DALE'S CHARTER SERVICE	0.00	1500.00

SAUK VALLEY COMMUNITY COLLEGE

APPROVED BY

William B. Jensen

PRESIDENT

Phil Jensen

SECRETARY

DATE 3-23-92

BILLS PAYABLE

March 23, 1992

EDUCATION FUND

06-000-550	KAREN KYLEN	Travel	18894	\$ 94.03
0-512-550	MICHAEL A. DOWELL	Travel	18895	267.44
0-814-550	ROSEMARY JOHNSON	Travel	18896	24.80
0-712-541.02	COLONIAL HOSPITAL SUPPLY CO.	Supplies	18897	1,119.05
2-000-529	JANET LYNCH	Reimb. tuition	18898	300.00
3-000-541.01	DEB FLORAY	Supplies	18899	19.74
0-818-550	VIRGINIA THOMPSON	Travel	18900	113.55
8-000-550	JOHN SAGMOE	Travel	18901	59.40
0-000-541.03	CATALOG CARD CORPORATION	Supplies	18902	544.00
0-810-547	ROBERTA J. MCBRIDE	Pub. Rela.	18903	62.75
0-818-550	VIRGINIA THOMPSON	Travel	18904	37.50
8-000-550	KENNETH BALLOM	Travel	18905	115.50
2-000-544.02	POSTMASTER	Bulk permit	18906	500.00
0-000-550	ILLINOIS LIBRARY ASSN.	Conf. reg.	18907	140.00
2-000-554	THE REGISTER STAR	Ads	18908	260.10
2-000-554	THE QUAD CITY TIMES	Ads	18909	110.76
-300-550	I.C.A.I.A.	Conf. reg.	18910	70.00
2-000-521	ROBERT EDISON	Ins. reimb.	18911	256.08
0-712-550	ST. ANTHONY MEDICAL CENTER	Conf. reg.	18912	45.00
2-000-544.02	UNITED PARCEL SERVICE	Service	18913	59.92
0-100-541.02	SACRAMENTO DISTRIBUTION CENTER	Supplies	18914	27.45
0-100-541.02	QUALITAS	Supplies	18915	34.95
0-100-541.02	ABOVE SOFTWARE INC.	Supplies	18916	28.50
0-100-541.02	MODULAR SOFTWARE SYSTEMS	Supplies	18917	23.00
0-810-547	ROBERTA MCBRIDE	Supplies - 10.14		
2-000-544.02	x x	Postage - 19.95	18918	30.09
	VOID CHECK		18919	
8-000-550	INDIAN LAKES RESORT	Lodging-conf.	18920	259.74
8-000-550	I.L.A.S.F.A.A.	Conf. Reg.	18921	170.00
	SVCC PAYROLL FUND	2-28-92 Payroll	18922	326,272.84
2-000-550	CAROL LINTON	Travel	18923	25.36
6-000-575	U.S. SPRINT	Service	18924	443.93
	VOID CHECK		18925	
5-000-575	CENTEL	Service	18926	1,572.63
0-300-541.02	ROCKFORD TRUCK SALES & SERVICES	Supplies	18927	58.61
1-000-550	MOBIL	Pres. travel	18928	11.66
0-500-550	KATHRYN LILLYMAN	Travel	18929	173.10
0-600-550	STEVE SHAFF	Travel	18930	174.00
1-000-550	SHELL OIL CO.	Pres. travel	18931	131.05
-000-550	VOID CHECK #18877 written February			(156.86)
0-000-544.02	POSTMASTER	Bus. reply fee	18932	185.00
711-534	C.C.I.	Photography - 35.90		
1-714-534	x x	x x 40.45	18933	76.35
1-813-541.02	GOLF DAY	Supplies	18934	40.90
1-818-550	DIXON CHAMBER OF COMMERCE	Annual Dinner	18935	30.00
-000-544.02	POSTMASTER	Bulk mailing	18936	168.09

92-000-539	ROSS HERREN	Staff development	18937	35.20
110-818-550	VIRGINIA THOMPSON	Travel	18938	180.10
192-000-539	GARY DREW	Staff development	18939	25.00
192-000-539	REX SCHMALL	Staff development	18940	25.00
131-000-550	STEVE ULLRICK	Travel	18941	163.62
138-000-550	RONALD MARLIER	Travel	18942	70.20
181-000-550	DIXON AREA CHAMBER OF COMMERCE	Meeting - 15.00		
110-813-550	x x x x	xx 15.00		
138-000-550	x x x x	x x 15.00	18943	45.00
192-000-544.02	UNITED PARCEL SERVICE	Service	18944	23.67
110-812-550	ZOLLIE HALL	Travel	18945	30.21
110-600-541.02	STEVE SHAFF	Supplies purchased	18946	50.00
192-000-544.02	UNITED PARCEL SERVICE	Service	18947	117.17
138-000-541.01	THE FOUNDATION CENTER	Supplies	18948	44.50
176-000-575	U.S. SPRINT	Service	18949	2,577.21
191-000-535	DR. JOHN BONDY	Service	18950	250.00
176-000-575	CENTEL	Service	18951	397.12
110-511-534	SHERRI LARSON	Model-art class	18952	27.00
138-000-550	JOHN SAGMOE	Travel	18953	29.81
120-000-550	ROBERT THOMAS	Travel	18954	55.68
110-811-550	MICHAEL SEGUIN	Travel	18955	60.34
110-400-541.02	UNIVERSITY OF ILLINOIS	Supplies - 104.00		
110-500-541.02	x x x	x x 95.00	18956	199.00
110-810-550	ROBERTA MCBRIDE	Travel	18957	24.50
192-000-544.02	POSTMASTER	Postage meter	18959	2,000.00
182-000-534	SBM EQUIPMENT CENTER	Service contr.	18959	95.00
191-000-550	RICHARD GROHARING	Travel	18960	43.45
110-815-550	DORIS COX	Travel	18961	48.80
195-000-550	WALTER CLEVINGER	Travel	18962	57.05
110-410-534	RHONDA MILLER	EMT Honorarium	18963	30.00
110-410-534	SUSAN COLE	CPR Honorarium	18964	70.00
110-410-534	MICHAEL R. COLE	CPR Honorarium	18965	40.00
110-410-534	TONI DAUPHIN	CPR Honorarium	18966	40.00
110-410-534	EMILY BRANDON	CPR Honorarium	18967	40.00
110-300-541.02	NORTHEAST ELECTRONICS	Supplies	18968	24.45
110-500-550	UNIVERSITY OF ILLINOIS	Conference	18969	95.50
	VOID CHECK		18970	
110-818-550	WALNUT CHAMBER OF COMMERCE	Annual dinner	18971	8.50
110-300-550	I.C.A.I.A.	Conference	18972	70.00
110-813-550	ILLINOIS SOC. FOR MICROBIOLOGY	Conference	18973	75.00
110-714-550	STANLEY SHIPPERT	Travel	18974	237.60
110-714-550	CASSANDRA FRANCISCO	Travel	18975	176.00
120-000-550	ROBERT THOMAS	Travel	18976	7.00
110-810-547	TIMBERLAKE PLAYHOUSE	Ads	18977	55.00
138-000-550	JOAN KERBER	Travel	18978	86.60
110-813-550	RICHARD J. HOLTAM	Travel	18979	560.24
182-000-541.01	FIRST BANK SOUTH	Supplies	18980	2,509.77
110-117-541.02	CBS THIS MORNING	Supplies	18981	24.92
192-000-544.02	UNITED PARCEL SERVICE	Service	18982	27.71
110-711-541.02	A.S.C.P.	Supplies	18983	20.50
110-512-550	KRIS MURRAY	Travel	18984	267.60
192-000-544.02	ROCKFORD POST OFFICE	Pathfinder mailing	18985	1,800.00
110-815-550	ILLINOIS READING COUNCIL	Conference fee	18986	58.00
	VOID CHECK		18987	
	VOID CHECK		18988	

20,000,541.03	AACJC PUBLICATIONS SALES	SUBSCR	18,990	46.00
10,800,542.00	A M MULTIGRAPHIC S	SUPPLIES	18,991	443.15
	VOID CHECK		18,992	.00
50,000,541.01	A C T PROGRAM	SUPPLIES	18,993	175.00
20,000,544.01	ACTIVISION ELECTRIC	SUPPLIES	18,994	361.99
92,000,589.00	AIRTITE	REMODELING PROJECT	18,995	23,885.00
10,418,541.02	AMERICAN CORRECTIONAL ASSN	SUPPLIES	18,996	59.45
10,400,541.02	AMERICAN HEART ASSN	SUPPLIES	18,997	60.00
10,300,541.02	ARATEX SERVICES	SUPPLIES	18,998	46.67
10,810,547.00	ASHTON GAZETTE	PUB RELA	18,999	12.00
20,000,545.00	BAKER & TAYLOR	BOOKS	19,000	241.70
20,000,545.00	BAKER & TAYLOR	BOOKS	19,001	3,594.93
01,000,559.00	RICHARD BEHRENDT	EXPENSES	19,002	400.00
95,000,534.01	BELL ATLANTIC	SERVICE	19,003	5,018.30
10,818,550.00	BESTWESTERN BRANDYWINE LODGE	MEETING	19,004	19.23
97,000,593.00	BLACK HAWK COLLEGE	CHARGE BACK	19,005	1,802.00
10,512,541.02	BLOCK MUSIC CO.	SUPPLIES	19,006	243.31
10,812,550.00	BRANDYWINE RESTAURANT	MEETING	20.88	
91,000,550.00	X X	BOARD DINNER	214.38	235.26
10,300,541.02	C & N SUPPLY	SUPPLIES	19,008	22.11
10,254,41.02	CGH MEDICAL CENTER	SUPPLIES	19,009	49.30
20,000,541.03	CINAHIL INFORMATION SYSTEMS	SUPPLIES	19,010	234.50
10,600,541.02	CAROLINA BIOL SUPPLY CO	SUPPLIES	19,011	61.03
00,300,541.02	CASTING SPECIALTIES CORP	SUPPLIES	19,012	75.23
10,100,541.02	CENTRAL POINT SOFTWARE	SUPPLIES	471.76	
10,810,547.00	X X		117.96	
10,814,541.02	X X		39.32	
95,000,541.01	X X		39.32	
96,000,541.01	X X		78.64	
10,400,541.02	COAST COMMUNITY COLLEGE DIST	SUPPLIES	19,013	747.00
97,000,593.00	COLLEGE OF DUPAGE	CHARGE BACK	19,014	38.00
10,712,541.02	COLONIAL HOSPITAL SUPPLY	SUPPLIES	19,015	242.72
10,713,541.02	X X		14.45	
10,716,541.02	X X		14.46	
10,818,541.01	COMMUNITY COLLEGE SATELLITE	NETWORK TELECONF	19,016	43.36
91,000,535.00	COMMUNITY UNIT DIST 5	LEGAL FEES	19,017	150.00
10,117,541.02	CONSOLIDATED MANAGEMENT CO	SUPPLIES	19,018	42.28
10,714,550.00	X X	MEETINGS	25.50	
10,811,550.00	X X		18.00	
10,812,550.00	X X		268.11	
10,818,550.00	X X		24.00	
50,000,550.00	X X		387.87	
01,000,556.00	X X		55.00	
91,000,550.00	X X		32.20	
10,815,541.02	CONTEMPORARY BOOKS	SUPPLIES	19,019	895.68
92,000,589.00	CRESCENT ELECTRIC SUPPLY	REMODELING	19,020	100.60
10,711,541.02	CURTIN MATHESON SCIENTIFIC INC	SUPPLIES	19,021	1,453.67
10,810,547.00	THE DAILY GAZETTE	PUB RELA	19,022	629.06
92,000,554.00	X X	ADS	102.80	
20,000,541.03	DAWSON	SUBSCR	19,023	197.52
00,300,541.02	DIXON GARAGE SUPPLY CO	SUPPLIES	19,024	75.00
			19,025	4.64

20,000,534.00	DIXON PUBLIC LIBRARY	TELECOMM	19,026	311.90
91,000,535.00	DIXON PUBLIC SCHOOLS	LEGAL FEES	19,027	24.02
10,713,541.02	R K DIXON CO	SUPPLIES	19,028	30.80
10,810,547.00	DIXON TELEGRAPH	PUB RELA 3548.00		
92,000,544.02	X X	PATHFINDER POSTAGE 2050.13		
92,000,544.00	X X	ADS 97.04	19,029	5,695.17
10,810,547.00	THE ECHO	PUB RELA 20.00		
10,813,541.02	X X	ADS 33.00	19,030	53.00
10,811,534.00	EDUCATIONAL SERVICE CENTER	NO 8 FINE ARTS CONF	19,031	381.93
10,500,541.02	EDUCATIONAL VIDEO NETWORK	SUPPLIES	19,032	53.95
93,000,541.02	V W EIMICKE ASSOCIATES	SUPPLIES	19,033	40.05
92,000,539.00	EXPOCON MANAGEMENT ASSOC	STAFF DEVEL-MAINT	19,034	80.00
10,100,541.02	F T A COMPUTERS	SUPPLIES	19,035	25.00
10,117,541.02	FLORALCREST FLORIST	SUPPLIES 42.68		
10,200,541.02	X X	48.50	19,036	91.18
10,711,541.02	GAMMA BIOLOGICALS	SUPPLIES	19,037	89.50
20,000,541.03	GAYLORD BROS INC	SUPPLIES	19,038	49.03
10,512,534.00	VINCENT E GILBERT	PIANO TUNING	19,039	300.00
10,300,541.02	GREAT LAKES AIRGAS	SUPPLIES	19,040	27.18
10,300,541.02	GREAT LAKES AIRGAS	SUPPLIES 3.10		
10,711,541.02	X X	5.10	19,041	8.20
10,712,542.01	HASKELLS	SUPPLIES 39.80		
31,000,541.01	X X	97.70		
20,000,541.01	X X	144.91	19,042	282.41
20,000,550.00	BETTY HALGREN	TRAVEL	19,043	32.75
76,000,575.00	HUGHES BUSINESS TELEPHONES	SERVICE	19,044	2,242.79
92,000,565.00	I B M CORPORATION	EQUIP 570.00		
95,000,534.01	X X	SERVICE 4872.00		
95,000,541.01	X X	SUPPLIES 7.00	19,045	5,449.00
10,810,547.00	I C C T A	MEETING 15.00		
01,000,550.00	X X	90.00		
91,000,549.00	X X	160.00		
91,000,550.00	X X	250.00	19,046	515.00
02,000,541.01	ILLINI TROPHY	NAME TAGS	19,047	8.30
20,000,545.00	I C C T A	BOOK	19,048	20.00
10,500,550.00	DEPT OF ENGLISH U OF I	CONF FEES	19,049	62.00
10,810,547.00	IMAGE DESIGNS	PUB RELA	19,050	193.00
10,810,541.01	THE INSTITUTE FOR FUTURE STUDIES	SUPPLIES	19,051	30.00
10,800,541.02	INTERLAKE CONTINENTAL WATER SYS	SUPPLIES 72.66		
10,711,541.02	X X	36.34	19,052	109.00
10,300,541.02	JOHNSTONE SUPPLY	SUPPLIES	19,053	515.56
10,300,541.02	MARLIN P JOHNES & ASSOC	SUPPLIES	19,054	63.88
38,000,549.00	KLOSTERS	DIPLOMAS	19,055	3.10
20,000,544.01	KLAUS RADIO INC	SUPPLIES	19,056	85.38
10,714,534.00	L & L XRAY	SERVICE	19,057	326.00
10,117,541.02	LEARNING SEED CO	SUPPLIES	19,058	54.00
10,300,541.02	LENS AND CAMERA CO	SUPPLIES	19,059	150.40
20,000,541.03	MCCALLS	SUBSCR	19,060	15.97
30,000,541.01	MCCORMICKS	FLOWERS	19,061	25.00
10,810,547.00	MAGUS MEDIA GROUP INC	PUB RELA	19,062	300.00

20,000.545.00	MEDCOM INC	BOOKS	19,063	76.95
10,400.541.02	UNIV OF MINNESOTA	SUPPLIES	19,064	84.50
92,000.589.00	MONARCH INDUSTRIAL INC	REMODELING PROJECT	19,065	945.90
20,000.534.00	MUELLER AUDIO VISUAL	SERVICE	19,066	258.73
92,000.546.00	N A E I R	SUPPLIES	19,067	54.50
10,600.542.00	NASCO	SUPPLIES	19,068	111.37
20,000.534.00	NORTHERN ILL LIBRARY SYS	MAINT	19,069	809.22
10,800.542.00	NORTHLAND PAPER CO	SUPPLIES	19,070	112.99
95,000.541.01	OASIS LASER SUPPLY	SUPPLIES	19,071	240.00
10,810.547.00	PEACHPIT PRESS INC	PUB RELA	19,072	13.95
92,000.537.00	PETERSON OFFICE SERVICE	SERVICE	19,073	133.75
20,000.544.01	PRATT AUDIO VISUAL	SUPPLIES 70.00		
92,000.585.00	X X	EQUIP 513.52	19,074	583.52
92,000.554.00	QUAD CITY TIMES	ADS	19,075	291.84
31,000.541.01	R C PRINTING	SUPPLIES	19,076	93.00
20,000.544.01	RADIO SHACK	SUPPLIES	19,077	99.47
10,300.541.02	RAMSEY ELECTRONICS INC	SUPPLIES	19,078	160.35
20,000.545.00	REGENT BOOK CO	BOOKS	19,079	157.36
10,810.547.00	ROCHELLE NEWS LEADER	PUB RELA	19,080	52.00
10,810.547.00	ROCKBROOK CAMERA & VIDEO	PUB RELA	19,081	115.44
92,000.554.00	THE REGISTER STAR	ADS	19,082	342.72
10,810.547.00	ROCK RIVER PRINTERS INC	PUB RELA	19,083	267.15
10,712.541.02	SAM RUMA	SUPPLIES	19,084	6.00
10,100.541.02	SVCC BOOKSTORE	SUPPLIES 2.76		
10,300.541.02	X X	11.96		
10,316.541.02	X X	4.39		
10,400.541.02	X X	27.49		
10,500.541.02	X X	16.73		
10,514.541.02	X X	29.64		
10,512.541.02	X X	2.31		
10,600.541.02	X X	11.51		
10,714.541.02	X X	2.09		
10,800.542.00	X X	12.21		
10,810.547.00	X X	1.04		
10,812.541.01	X X	9.53		
10,813.541.02	X X	97.40		
10,815.541.02	X X	12.86		
10,810.541.02	X X	13.93		
20,000.544.01	X X	124.35		
31,000.541.01	X X	6.47		
38,000.541.01	X X	150.82		
38,000.554.00	X X	93.45		
82,000.541.01	X X	52.25		
81,000.541.01	X X	19.82		
94,000.541.01	X X	1.96		
95,000.541.02	X X	35.62		
31,000.541.01	SBM EQUIPMENT CENTER	SUPPLIES 59.00	19,085	740.59
38,000.541.01	X X	125.00		
95,000.541.01	X X	143.85	19,086	327.85
10,814.550.00	SVCC CENTER FOR BUS & ECON DEVEL	MEETING 12.00		
10,812.550.00	X X	12.00		
2,000.550.00	X X	12.00	19,087	36.00

10,715,541.02	SCHOOL TECH INC	SUPPLIES	19,088	55.82
01,000,550.00	SHELL OIL CO	PRES TRAVEL	19,089	66.80
10,010,541.02	SIMON & SCHUSTER	SUPPLIES	19,090	32.48
10,000,541.02	SOUTHERN BIOLOGICAL SUPPLY CO	SUPPLIES	19,091	820.15
10,015,541.02	STECK VAUGHN CO	SUPPLIES	19,092	105.44
10,010,547.00	STERLING GUS MACKER	COURT REG	19,093	500.00
20,000,545.00	THINKING ALLOWED PRODUCTIONS	BOOKS	19,094	103.90
10,512,534.00	THOMWAY LINES	MOVING PIANO	19,095	195.00
10,316,541.02	TELSHARE PUBLISHING CO	SUPPLIES	19,096	5.00
02,000,534.00	TURNER ARCHITECTURAL ASSOC	SERVICES	19,097	1,400.00
95,000,541.01	UARCO INC	SUPPLIES	19,098	2,727.09
92,000,505.00	UNIQUE COMPUTER	EQUIP 620.00		
95,000,541.02	X X	316.00	19,099	936.00
10,500,541.02	UNIVERSITY FOUNDATION	SUPPLIES	19,100	103.00
10,010,547.00	W I X N	PUB RELA	19,101	740.00
10,010,547.00	W L L T	PUB RELA	19,102	295.00
10,010,547.00	W S D R	PUB RELA	19,103	1,000.00
10,010,547.00	W N S PUBLICATIONS	PUB RELA	19,104	00.25
10,010,547.00	WAGNERS PRINTERS INC	PUB RELA	19,105	448.10
10,712,541.02	WALLCUR INC	SUPPLIES	19,106	58.34
10,000,541.02	WARDS NATURAL SCIENCE ESTAB	SUPPLIES	19,107	42.97
10,014,541.02	WAYNE INC	SUPPLIES	19,108	96.04
20,000,545.00	WEST PUBLISHING CO	BOOKS	19,109	79.50
92,000,505.00	WILKENS ANDERSON CO	EQUIPMENT	19,110	1,395.00
20,000,545.00	WORLDWATCH INSTITUTE	BOOKS	19,111	45.00
95,000,541.01	WRITING TOOLS GROUP	SUPPLIES	19,112	35.45
20,000,541.01	XEROX CORPORATION	SUPPLIES	19,113	2,515.91

CKS. #18894 - 18989

551,281.02

TOTAL EDUCATION FUND FOR MARCH

\$630,740.03

OPERATIONS, BUILDING & MAINTENANCE

270-000-541.04 VOID CHECK #3394 written February \$ (1,425.20)

270-000-550	JIM REYNOLDS	Travel	3395	28.29
270-000-541.04	FARM AND FLEET	Supplies	3396	831.80
270-000-541.04	WOLOHAN LUMBER CO.	Supplies	3397	47.95
270-000-541.04	WOLOHAN LUMBER CO.	Supplies	3398	1,377.25
270-000-550	DANIEL J. HENSON	Travel	3399	157.85
270-000-534.01	DIV. OF PETROLEIUM/CHEMICAL SAFETY	Reg. fee	3400	3,200.00
270-000-550	DANIEL HENSON	Travel	3401	147.40
271-000-571	AMGAS, INC.	Service	3402	2,393.20
270-000-541.04	EAGLES	Supplies	3403	137.47
				<hr/>
				\$6,896.01

70,000,550.00	APPA	CONF REG	3,404	695.00
70,000,541.04	ACE HARDWARE	SUPPLIES	3,405	271.45
70,000,534.01	BROWNING FERRIS INDUSTRIES	SERVICE	3,406	171.00
70,000,534.01	C & E GLASS CO	REPAIRS	3,407	1,230.00
70,000,573.00	COMMONWEALTH EDISON	SERVICE	3,408	1,017.93
70,000,573.00	COMMONWEALTH EDISON	SERVICE	3,409	93.18
70,000,541.04	CRESCENT ELECTRIC SUPPLY	SUPPLIES	3,410	105.60
70,000,541.04	DISKEY SIGN CORPORATION	SUPPLIES	3,411	720.91
70,000,541.04	DIXON GARAGE SUPPLY CO	SUPPLIES	3,412	35.70
70,000,541.04	DIXON PAINT CO	SUPPLIES	3,413	131.13
70,000,541.04	DIXON TRUE VALUE HARDWARE	SUPPLIES	3,414	11.18
70,000,534.01	ECOLAB PEST ELMINATION	SERVICE	3,415	154.00
70,000,541.04	GRUMMERTS TRUE VALUE	SUPPLIES	3,416	71.02
70,000,541.04	GRUMMERTS TRUE VALUE	SUPPLIES	3,417	3.97
70,000,541.04	HASKELLS	SUPPLIES	3,418	230.40
70,000,534.01	HILLS ELECTRIC MOTOR SERV	SUPPLIES	3,419	75.22
70,000,541.04	HOYLE ROAD EQUIP CO	SUPPLIES	3,420	208.98
70,000,541.04	ILLINI TROPHY	NAME TAGS	3,421	4.15
70,000,541.04	INSTITUTIONAL PRODUCTS CORP	SUPPLIES	3,422	42.11
70,000,541.04	J & K LOCKSMITH SERVICE	KEYS	3,423	89.80
70,000,541.04	LEE FS INC	SUPPLIES	3,424	451.44
70,000,534.01	JOHN A LOUS SONS INC	SERVICES	3,425	414.00
70,000,541.04	MCMASTER CARR SUPPLY CO	SUPPLIES	3,426	250.96
70,000,534.01	DAVID MAYES	SEWAGE TESTING	3,427	400.00
70,000,541.04	MODERN SHOE SHOP	SUPPLIES	3,428	10.00
70,000,534.01	MONTGOMERY ELEVATOR CO	SERVICE	3,429	515.53
70,000,541.04	MORGAN SERVICES INC	SUPPLIES	3,430	158.40
70,000,541.04	NAPA AUTO PARTS	SUPPLIES	3,431	75.42
71,000,571.00	NORTHERN ILL GAS	SERVICE	3,432	3,725.75
70,000,534.01	PETERSON OFFICE SERVICE	SERVICE	121.25	
70,000,541.04	X X	SUPPLIES	80.68	
70,000,541.04	RADIO RANCH	SUPPLIES	3,433	201.93
70,000,541.04	SVCC BOOKSTORE	SUPPLIES	3,434	129.00
70,000,541.04	SVCC BOOKSTORE	SUPPLIES	3,435	66.98
70,000,541.04	S & S BUILDERS HARDWARE CO	SUPPLIES	3,436	45.48
70,000,541.04	SHERWIN WILLIAMS CO	SUPPLIES	3,437	9.60
70,000,541.04	SORENSEN JANITORIAL SUPPLY	SUPPLIES	3,438	1,613.00

0,000,541.04	STATE SUPPLY CO	SUPPLIES	3,439	942.34
0,000,541.04	WILCO RENTAL INC	SUPPLIES	3,440	123.91
0,000,541.04	WISCONSIN TURF EQUIP CO	SUPPLIES	3,441	195.41
0,000,541.04	WOLOHAN LUMBER CO	SUPPLIES	3,442	23.98

32,726.02

CKS. # 3395 - 3403 and void #3394

6,896.01

TOTAL OPERATIONS, BUILDING & MAINTENANCE FOR MARCH

\$39,622.03

LIABILITY, PROTECTION & SETTLEMENT FUND

292-000-517	SVCC PAYROLL FUND	2-28-92 Payroll	1165	\$ 2,876.13
292-000-527	DIXON NATIONAL BANK	Medicare 2-28-92	1175	1,843.97
292-000-529	DIXON NATIONAL BANK	FICA 2-28-92	1176	97.04
292-000-528	AUTO GLASS CENTER	Van repairs-deductible	1177	50.00
200-000-171	WALDER, RHODES, PALEN & CORKEN	Prepaid ins.-1663.00		
292-000-528	x x x	Policy renewals-4989.00	1304	6,652.00
200-000-171	WILKINS, LOWE & CO.	Prepaid ins-1051.25		
292-000-528	x x x	Boiler ins.-885.75	1305	1,937.00
200-000-171	WILKINS,LOWE & CO.	Prepaid Ins.-535.50		
292-000-528	x x x	Add tuition fee-766.50	1319	1,302.00
292-000-517	SVCC PAYROLL FUND	3/15/92 payroll	1361	2,768.21
292-000-527	DIXON NATIONAL BANK	Medicare 3/15	1364	1,642.21
292-000-529	DIXON NATIONAL BANK	FICA 3/15	1365	149.00
292-000-528	BROWNING FERRIS INDUSTRIES	Oil spill	1371	2,800.00
292-000-528	SPECIALTY OIL SORBENTS	Oil spill	1372	932.00

TOTAL LIABILITY, PROTECTION & SETTLEMENT FOR MARCH

\$23,049.56

SAUK VALLEY COMMUNITY COLLEGE

APPROVED BY

William B. Yemmer

PRESIDENT

R. M. C. C.

SECRETARY

DATE 3-23-92

OFFICE OF BUSINESS SERVICES
SAUK VALLEY COMMUNITY COLLEGE

BUDGET SUMMARY REPORT

3/31/92

		R E V E N U E			E X P E N D I T U R E S		
	BEGINNING FY 91 BALANCE (DEFICIT)	BUDGET	TO DATE	%	BUDGET	TO DATE	%
<hr/>							
GENERAL FUNDS							
<hr/>							
Education Fund	\$905,404	\$5,823,000	\$2,910,059	50.0%	\$6,071,000	\$4,244,916	69.9%
Operations, Building & Maintenance Fund	918,214	282,000	141,360	50.1%	449,000	303,769	67.7%
<hr/>							
TOTAL OPERATING FUND	\$1,823,618	\$6,105,000	\$3,051,419	50.0%	\$6,520,000	\$4,548,685	69.8%
SPECIAL REVENUE FUNDS							
<hr/>							
Liability, Protection & Settlement Fund (Insurance)	\$470,367	\$252,000	\$136,934	54.3%	\$237,000	\$248,049	104.7%
Audit Fund	\$36,572	\$24,000	\$11,627	48.4%	\$24,000	\$23,925	99.7%
Operations & Maintenance (Restricted) Fund (Protection, Health and Safety Fund)	\$199,544	\$334,000	\$164,351	49.2%	\$533,544	\$189,248	35.5%
PROPRIETARY FUNDS							
<hr/>							
Bookstore Fund	\$329,810	\$667,000	\$548,334	82.2%	\$612,000	\$570,061	93.1%
OTHERS							
Working Cash Fund	\$2,565,114	\$175,000	\$78,928		\$175,000	\$0	
Building Bond Proceeds Fund (Site and Construction)	\$877,055	\$52,000	\$35,105		\$205,000	\$0	

EXPENDITURES	BUDGET	EXPENDITURES AS OF 12/31/91	EXP. JAN., FEB. & MAR.	TOTAL EXPENDITURES	%
110-000-000 INSTRUCTION					
110-100-000 BUSINESS EDUCATION					
110-100-513.01 Salaries - Full Time	\$284,100.00	\$82,673.64	\$89,505.08	\$172,178.72	60.60%
110-100-534 - Contractual Services	\$5,000.00	\$4,086.60	\$267.65	\$4,354.25	87.09%
110-100-541.02 General Materials & Supplies	\$14,675.00	\$7,393.64	\$3,944.30	\$11,337.94	77.26%
110-100-550 Conference & Meeting Expense	\$1,400.00	\$46.20	\$40.70	\$86.90	6.21%
	\$305,175.00	\$94,200.08	\$93,757.73	\$187,957.81	61.59%
110-117-000 FOOD SERVICES					
110-117-541.02 General Materials & Supplies	\$2,500.00	\$100.30	\$237.23	\$337.53	13.50%
110-117-550 - Conference & Meeting Expense	\$100.00	\$50.25	\$13.75	\$64.00	64.00%
	\$2,600.00	\$150.55	\$250.98	\$401.53	15.44%
110-200-000 AGRICULTURE					
110-200-541.02 - General Materials & Supplies	\$500.00	\$142.00	\$57.42	\$199.42	39.88%
	\$500.00	\$142.00	\$57.42	\$199.42	39.88%
110-300-000 INDUSTRIAL EDUCATION					
110-300-513.01 Salaries - Full Time	\$253,031.00	\$69,969.60	\$81,631.20	\$151,600.80	59.91%
110-300-534 Contractual Services	\$3,000.00	\$1,692.77	\$0.00	\$1,692.77	56.43%
110-300-541.02 General Materials & Supplies	\$17,265.00	\$6,760.38	\$4,053.30	\$10,813.68	62.63%
110-300-550 Conference & Meeting Expense	\$1,400.00	\$957.52	\$198.05	\$1,155.57	82.54%
	\$274,696.00	\$79,380.27	\$85,882.55	\$165,262.82	60.16%
110-312-000 LEARNING ASSISTANCE CENTER					
110-312-513.01 - Salaries - Full Time	\$26,599.00	\$8,866.32	\$10,344.04	\$19,210.36	72.22%
110-312-516 Salary-Secretarial-Part-time	\$4,500.00	\$121.00	\$1,579.05	\$1,700.05	37.78%
110-312-541.02 General Materials & Supplies	\$200.00	\$62.51	\$3.24	\$65.75	32.88%
110-312-550 Conference & Meeting Expense	\$200.00	\$0.00	\$0.00	\$0.00	0.00%
	\$31,499.00	\$9,049.83	\$11,926.33	\$20,976.16	66.59%
110-316-000 HUMAN SERVICES					
110-316-534 - Contractual Services	\$100.00	\$0.00	\$0.00	\$0.00	0.00%
110-316-541.02 - General Materials & Supplies	\$800.00	\$151.73	\$109.27	\$261.00	32.63%
110-316-550 Conference & Meeting Expense	\$300.00	\$0.00	\$0.00	\$0.00	0.00%
	\$1,200.00	\$151.73	\$109.27	\$261.00	21.75%
110-400-000 SOCIAL SCIENCE					
110-400-513.01 Salaries - Full Time	\$152,411.00	\$44,599.92	\$52,033.24	\$96,633.16	63.40%
110-400-541.02 - General Materials & Supplies	\$4,320.00	\$1,475.46	\$1,413.05	\$2,888.51	66.86%
110-400-550 Conference & Meeting Expense	\$1,000.00	\$0.00	\$0.00	\$0.00	0.00%
	\$157,731.00	\$46,075.38		\$99,521.67	63.10%

110-410-000 E.M.T.

110-410-534	Contractual Services	\$1,500.00	\$0.00	\$280.00	\$280.00	18.67%
110-410-541.02	General Materials & Supplies	\$300.00	\$0.00	\$0.00	\$0.00	0.00%
110-410-550	- Conference & Meeting Expense	\$50.00	\$0.00	\$0.00	\$0.00	0.00%
		\$1,850.00	\$0.00	\$280.00	\$280.00	15.14%

110-418-000 CRIMINAL JUSTICE

110-418-513.01	Salaries - Full Time	\$28,152.00	\$9,384.00	\$10,948.00	\$20,332.00	72.22%
110-418-534	Contractual Services	\$200.00	\$0.00	\$0.00	\$0.00	0.00%
110-418-541.02	General Materials & Supplies	\$1,200.00	\$518.25	\$165.36	\$683.61	56.97%
110-418-550	Conference & Meeting Expense	\$600.00	\$27.50	\$55.25	\$82.75	13.79%
		\$30,152.00	\$9,929.75	\$11,168.61	\$21,098.36	69.97%

110-500-000 HUMANITIES

110-500-513.01	Salaries-Full Time (Humanities)	\$300,443.00	\$88,694.76	\$101,339.83	\$190,034.59	63.25%
110-500-541.02	General Materials & Supplies (Humanities)	\$4,500.00	\$1,516.34	\$1,089.74	\$2,606.08	57.91%
110-500-550	Conference & Meeting Expense (Humanities)	\$2,800.00	\$701.96	\$407.97	\$1,109.93	39.64%
		\$307,743.00	\$90,913.06	\$102,837.54	\$193,750.60	62.96%

110-511-000 ART

110-511-513.01	Salaries-Full Time (Art)	\$39,270.00	\$13,090.02	\$15,271.69	\$28,361.71	72.22%
110-511-534	Contractual Services (Art)	\$400.00	\$150.00	\$147.00	\$297.00	0.00%
110-511-541.02	General Materials & Supplies (Art)	\$600.00	\$227.68	\$115.83	\$343.51	57.25%
110-511-550	Conference & Meeting Expense (Art)	\$200.00	\$121.75	\$0.00	\$121.75	
		\$40,470.00	\$13,589.45	\$15,534.52	\$29,123.97	71.96%

110-512-000 MUSIC

110-512-513.01	Salaries-Full Time (Music)	\$76,201.00	\$19,050.24	\$22,225.28	\$41,275.52	54.17%
110-512-534	Contractual Services (Music)	\$1,500.00	\$21.00	\$695.00	\$716.00	47.73%
110-512-541.02	- General Materials & Supplies(Music)	\$4,168.00	\$659.36	\$473.13	\$1,132.49	27.17%
110-512-550	Conference & Meeting Expense(Music)	\$800.00	\$150.55	\$535.04	\$685.59	85.70%
		\$82,669.00	\$19,881.15	\$23,928.45	\$43,809.60	52.99%

110-600-000 MATH SCIENCE

110-600-512	Salary - Lab Assistant	\$16,000.00	\$0.00	\$3,827.05	\$3,827.05	23.92%
110-600-513.01	Salaries - Full Time	\$272,515.00	\$82,653.12	\$96,428.64	\$179,081.76	65.71%
110-600-534	Contractual Services	\$2,000.00	\$660.00	\$0.00	\$660.00	33.00%
110-600-541.02	General Materials & Supplies	\$16,800.00	\$8,622.25	\$2,552.44	\$11,174.69	66.52%
110-600-550	Conference & Meeting Expense	\$1,600.00	\$1,334.41	\$174.00	\$1,508.41	94.28%
		\$308,915.00	\$93,269.78	\$102,982.13	\$196,251.91	63.53%

110-711-000 MED. LAB. TECHNOLOGY

110-711-513.01	Salaries - Full Time	\$33,531.00	\$14,272.74	\$7,758.03	\$22,030.77	65.70%
110-711-534	Contractual Services	\$4,515.00	\$1,669.30	\$206.90	\$1,876.20	41.55%
110-711-541.02	General Materials & Supplies	\$11,805.00	\$7,329.94	\$2,579.38	\$9,909.32	83.94%
110-711-550	Conference & Meeting Expense	\$1,040.00	\$605.00	\$105.88	\$710.88	68.35%
		\$50,891.00	\$23,876.98	\$10,650.19	\$34,527.17	67.85%

110-712-000 A.D. NURSING

110-712-513.01	Salaries - Full Time	\$121,013.00	\$31,029.05	\$35,295.47	\$66,324.52	54.81%
110-712-516	Salaries - Office Staff	\$18,619.00	\$6,982.11	\$5,430.53	\$12,412.64	66.67%
110-712-534.01	Contractual Services	\$500.00	\$225.00	\$71.00	\$296.00	59.20%
110-712-541.02	General Materials & Supplies	\$6,473.00	\$3,281.96	\$2,342.90	\$5,624.86	86.90%
110-712-541.02.1	General Supplies - Title III	\$8,450.00	\$5,158.57	\$134.40	\$5,292.97	62.64%
110-712-550	Conference & Meeting Expense	\$1,500.00	\$1,103.37	\$273.79	\$1,377.16	91.81%

		\$156,555.00	\$47,780.06	\$43,548.09	\$91,328.15	58.34%
--	--	--------------	-------------	-------------	-------------	--------

110-713-000 L.P. NURSING

110-713-513.01	Salaries - Full Time	\$65,623.00	\$16,405.74	\$19,140.03	\$35,545.77	54.17%
110-713-534	Contractual Services	\$500.00	\$0.00	\$0.00	\$0.00	0.00%
110-713-541.02	General Materials & Supplies	\$2,972.00	\$2,277.05	\$252.32	\$2,529.37	85.11%
110-713-550	Conference & Meeting Expense	\$600.00	\$288.00	\$95.88	\$383.88	63.98%

		\$69,695.00	\$18,970.79	\$19,488.23	\$38,459.02	55.18%
--	--	-------------	-------------	-------------	-------------	--------

110-714-000 RADIOLOGIC TECHNOLOGY

110-714-513.01	Salaries - Full Time	\$73,622.00	\$24,858.28	\$21,473.06	\$46,331.34	62.93%
110-714-534	Contractual Services	\$3,935.00	\$4,018.89	\$1,051.45	\$5,070.34	128.85%
110-714-541.02	General Materials & Supplies	\$4,265.00	\$1,662.58	\$325.11	\$1,987.69	46.60%
110-714-550	Conference & Meeting Expense	\$5,350.00	\$3,036.36	\$664.40	\$3,700.76	69.17%

		\$87,172.00	\$33,576.11	\$23,514.02	\$57,090.13	65.49%
--	--	-------------	-------------	-------------	-------------	--------

110-715-000 PHYSICAL EDUCATION

110-715-513.01	Salaries - Full Time	\$65,619.00	\$16,404.78	\$19,138.91	\$35,543.69	54.17%
110-715-534	Contractual Services	\$2,500.00	\$1,078.22	\$1,097.80	\$2,176.02	87.04%
110-715-541.02	General Materials & Supplies	\$1,214.00	\$114.47	\$491.20	\$605.67	49.89%
110-715-550	Conference & Meeting Expense	\$400.00	\$0.00	\$0.00	\$0.00	0.00%

		\$69,733.00	\$17,597.47	\$20,727.91	\$38,325.38	54.96%
--	--	-------------	-------------	-------------	-------------	--------

110-716-000 NURSING ASSISTANT

110-716-534	Contractual Services	\$100.00	\$0.00	\$0.00	\$0.00	0.00%
110-716-541.02	General Materials & Supplies	\$1,130.00	\$1,946.70	\$3.41	\$1,950.11	172.58%
110-716-550	Conference & Meeting Expense	\$250.00	\$0.00	\$0.00	\$0.00	0.00%

		\$1,480.00	\$1,946.70	\$3.41	\$1,950.11	131.76%
--	--	------------	------------	--------	------------	---------

110-800-000 FACULTY OFFICE & REPRODUCTION ROOM

110-800-516	Salaries - Secretarial	\$58,985.00	\$16,981.70	\$24,655.53	\$41,637.23	70.59%
110-800-534.01	Contractual Services (Fac. Off)	\$345.00	\$0.00	\$0.00	\$0.00	0.00%
110-800-534	Contractual Services (Workroom)	\$10,500.00	\$10,755.00	\$0.00	\$10,755.00	102.43%
110-800-542	General Materials & Supplies (Workroom)	\$800.00	\$1,947.07	\$650.70	\$2,597.77	324.72%
110-800-541.02	General Materials & Supplies (Faculty Office)	\$1,400.00	\$248.06	\$140.64	\$388.70	27.76%
110-800-541.03	General Materials & Supplies (Institutional Committees)	\$300.00	\$9.48	\$7.27	\$16.75	5.58%
110-800-550	Conference & Meeting Expense	\$300.00	\$0.00	\$0.00	\$0.00	0.00%

		\$72,630.00	\$29,941.31	\$25,454.14	\$55,395.45	76.27%
--	--	-------------	-------------	-------------	-------------	--------

110-810-000 MARKETING & PUBLIC RELATIONS

110-810-511	Salaries - Administrative	\$35,000.00	\$14,062.36	\$10,062.50	\$24,124.86	68.93%
110-810-516	Salaries - Secretarial	\$18,587.00	\$15,340.00	(\$2,174.18)	\$13,165.82	70.83%
110-810-547	General Materials & Supplies	\$99,780.00	\$24,267.84	\$20,404.06	\$44,671.90	44.77%
110-810-550	Conference & Meeting Expense	\$1,730.00	\$1,724.92	\$112.21	\$1,837.13	106.19%
		\$155,097.00	\$55,395.12	\$28,404.59	\$83,799.71	54.03%

110-811-000 DEAN OF ARTS & SOCIAL SCIENCES

110-811-511	Salaries - Administrative	\$51,223.00	\$21,342.90	\$14,940.03	\$36,282.93	70.83%
110-811-513.02	- Salaries - Instruction (Part-time)	\$125,000.00	\$43,378.48	\$69,384.25	\$112,762.73	90.21%
110-811-513.03	- Salaries - Instruction (Summer)	\$50,000.00	\$52,048.59	\$0.00	\$52,048.59	104.10%
110-811-516	- Salaries - Secretarial	\$19,448.00	\$8,103.30	\$5,447.91	\$13,551.21	69.68%
110-811-534	Contractual Services	\$850.00	\$200.00	\$381.93	\$581.93	68.46%
110-811-541.01	General Materials & Supplies	\$1,500.00	\$143.57	\$114.92	\$258.49	17.23%
110-811-550	Conference & Meeting Expense	\$2,600.00	\$853.52	\$297.91	\$1,151.43	44.29%
		\$250,621.00	\$126,070.36	\$90,566.95	\$216,637.31	86.44%

110-812-000 DEAN OF BUSINESS & TECHNOLOGY

110-812-511	Salaries - Administrative	\$55,570.00	\$23,154.20	\$16,207.94	\$39,362.14	70.83%
110-812-513.02	- Salaries - Instruction (Part-time)	\$155,000.00	\$30,436.90	\$121,226.80	\$151,663.70	97.85%
110-812-513.03	- Salaries - Instruction (Summer)	\$45,000.00	\$47,376.90	\$0.00	\$47,376.90	105.28%
110-812-516	Salaries Secretarial	\$15,937.00	\$6,640.40	\$4,648.28	\$11,288.68	70.83%
110-812-541.01	General Materials & Supplies	\$1,500.00	\$377.98	\$138.31	\$516.29	34.42%
110-812-550	- Conference & Meeting Expense	\$3,500.00	\$1,690.60	\$509.11	\$2,199.71	62.85%
		\$276,507.00	\$109,676.98	\$142,730.44	\$252,407.42	91.28%

110-813-000 DEAN OF COMM & EXTENDED SERVICES

110-813-511	Salaries - Administrative	\$49,427.00	\$20,594.60	\$12,356.76	\$32,951.36	66.67%
110-813-513.02	- Instructional Salaries	\$30,000.00	\$9,860.70	\$9,338.92	\$19,199.62	64.00%
110-813-513.03	Community Service Coordinators	\$8,000.00	\$339.30	\$2,364.28	\$2,703.58	33.79%
110-813-516	Salaries - Secretarial	\$15,502.00	\$6,459.20	\$4,521.44	\$10,980.64	70.83%
110-813-534	- Contractual Services	\$6,800.00	\$1,182.40	\$15.00	\$1,197.40	17.61%
110-813-541.02	General Materials & Supplies	\$3,000.00	\$1,292.02	\$845.11	\$2,137.13	71.24%
110-813-550	Conference & Meeting Expense	\$2,250.00	\$606.17	\$1,197.94	\$1,804.11	80.18%
		\$114,979.00	\$40,334.39	\$30,639.45	\$70,973.84	61.73%

110-814-000 NURSING EDUCATION

110-814-511	- Salaries - Administrative	\$37,088.00	\$15,453.30	\$10,817.31	\$26,270.61	70.83%
110-814-513.02	- Salaries - Instruction (Part-time)	\$45,000.00	\$11,713.01	\$30,311.47	\$42,024.48	93.39%
110-814-513.03	Salaries - Instructional (Summer)	\$11,500.00	\$11,190.63	\$0.00	\$11,190.63	97.31%
110-814-534	Contractual Services	\$250.00	\$0.00	\$0.00	\$0.00	0.00%
110-814-541.01	General Materials & Supplies	\$1,080.00	\$1,091.25	\$267.78	\$1,359.03	125.84%
110-814-550	Conference & Meeting Expense	\$1,500.00	\$60.63	\$144.05	\$204.68	13.65%
		\$96,418.00	\$39,508.82	\$41,540.61	\$81,049.43	84.06%

110-815-000 ACADEMIC SKILLS CENTER

110-815-513.01	Salaries - Full Time	\$75,087.00	\$18,771.72	\$21,900.34	\$40,672.06	54.17%
110-815-541.02	General Materials & Supplies	\$7,050.00	\$2,593.35	\$1,419.11	\$4,012.46	56.91%
110-815-550	- Conference & Meeting Expense	\$700.00	\$441.60	\$106.80	\$548.40	78.34%
		\$82,837.00	\$21,806.67	\$23,426.25	\$45,232.92	54.60%

110-816-000 HONORS PROGRAM

110-816-534	Contractual Services	\$100.00	\$0.00	\$0.00	\$0.00	0.00%
110-816-541.02	General Materials & Supplies	\$400.00	\$34.21	\$61.35	\$95.56	23.89%
110-816-550	- Conference & Meeting Expense	\$250.00	\$0.00	\$82.74	\$82.74	33.10%
		\$750.00	\$34.21	\$144.09	\$178.30	23.77%

110-818-000 VICE PRESIDENT OF INSTRUCTION

110-818-511	- Salaries - Administrative	\$63,408.00	\$26,420.00	\$18,494.00	\$44,914.00	70.83%
110-818-516	Salaries - Secretarial	\$24,669.00	\$10,278.80	\$7,195.16	\$17,473.96	70.83%
110-818-518	Student Tutors	\$3,000.00	\$0.00	\$0.00	\$0.00	0.00%
110-818-534	Contractual Services	\$3,100.00	\$1,110.00	\$0.00	\$1,110.00	35.81%
110-818-541.01	General Materials & Supplies	\$2,000.00	\$753.03	\$455.64	\$1,208.67	60.43%
110-818-550	Conference & Meeting Expense	\$3,000.00	\$807.39	\$1,043.88	\$1,851.27	61.71%
		\$99,177.00	\$39,369.22	\$27,188.68	\$66,557.90	67.11%

120-000-000 LEARNING RESOURCE CENTER

120-000-513.03	Salaries - Instructional (Summer)	\$4,500.00	\$4,500.00	\$0.00	\$4,500.00	100.00%
120-000-515	Salaries - Professional	\$120,315.00	\$37,379.98	\$35,091.91	\$72,471.89	60.24%
120-000-516	Salaries - Secretarial	\$36,721.00	\$15,300.40	\$10,494.52	\$25,794.92	70.25%
120-000-516.01	Salaries - Secretarial- Part-time	\$5,250.00	\$0.00	\$1,509.75	\$1,509.75	28.76%
120-000-534	Contractual Services	\$12,242.00	\$3,674.06	\$5,561.65	\$9,235.71	75.44%
120-000-541.01	Xerox Supplies	\$0.00	(\$3,054.13)	(\$1,218.47)	(\$4,272.60)	ERR
120-000-541.03	Library Supplies	\$19,635.00	\$14,134.30	\$2,321.44	\$16,455.74	83.81%
120-000-544.01	Audio Visual Supplies	\$10,250.00	\$1,661.74	\$899.65	\$2,561.39	24.99%
120-000-545	Library Books	\$42,000.00	\$9,916.82	\$18,039.90	\$27,956.72	66.56%
120-000-550	Conference & Meeting Expense	\$2,390.00	\$653.72	\$326.88	\$980.60	41.03%
		\$253,303.00	\$84,166.89	\$73,027.23	\$157,194.12	62.06%

130-000-000 STUDENT SERVICES AND AIDS

131-000-000 ADMISSIONS AND RECORDS

131-000-511	Salaries - Administrative	\$40,902.00	\$13,966.92	\$7,596.76	\$21,563.68	52.72%
131-000-516	Salaries - Secretarial	\$75,735.00	\$29,368.80	\$22,066.16	\$51,434.96	67.91%
131-000-534	Contractual Services	\$4,280.00	\$680.00	\$0.00	\$680.00	15.89%
131-000-541.01	General Materials & Supplies	\$16,000.00	\$6,727.72	\$1,189.53	\$7,917.25	49.48%
131-000-550	Conference & Meeting Expense	\$3,000.00	\$253.97	\$312.28	\$566.25	18.88%
		\$139,917.00	\$50,997.41	\$31,164.73	\$82,162.14	58.72%

132-000-000	COUNSELING AND TESTING					
132-000-515	Salaries - Professional	\$96,489.00	\$42,499.51	\$28,303.37	\$70,802.88	73.38%
132-000-516	Salaries - Secretarial	\$20,244.00	\$6,560.00	\$4,592.00	\$11,152.00	55.09%
		\$116,733.00	\$49,059.51	\$32,895.37	\$81,954.88	70.21%
133-000-541.01	HEALTH SERVICES - Materials	\$100.00	\$0.00	\$19.74	\$19.74	19.74%
		\$100.00	\$0.00	\$19.74	\$19.74	19.74%
134-000-000	FINANCIAL AIDS					
134-000-511	- Salaries - Administrative	\$49,549.00	\$20,645.40	\$14,451.78	\$35,097.18	70.83%
134-000-516	- Salaries - Secretarial	\$36,559.00	\$15,232.90	\$11,295.43	\$26,528.33	72.56%
		\$86,108.00	\$35,878.30	\$25,747.21	\$61,625.51	71.57%
138-000-000	VICE PRESIDENT OF STUDENT SERVICES					
138-000-511	Salaries - Administrative	\$60,208.00	\$25,086.70	\$17,560.69	\$42,647.39	70.83%
138-000-512.02	- Student Activities Coord.	\$16,644.00	\$5,825.40	\$5,825.40	\$11,650.80	70.00%
138-000-516	Salaries - Secretarial	\$19,103.00	\$7,959.60	\$5,571.72	\$13,531.32	70.83%
138-000-519	Other Salaries (Coaching)	\$41,113.00	\$11,365.13	\$17,836.73	\$29,201.86	71.03%
138-000-534	Contractual Services	\$900.00	\$876.06	\$0.00	\$876.06	97.34%
138-000-541.01	General Materials & Supplies	\$20,210.00	\$14,777.93	\$3,325.15	\$18,103.08	89.57%
138-000-549	Commencement	\$7,000.00	\$886.14	\$8.56	\$894.70	12.78%
138-000-550	Conference & Meeting Expense	\$7,900.00	\$2,421.12	\$2,074.00	\$4,495.12	56.90%
138-000-554	Student Recruitment	\$4,500.00	\$1,428.84	\$324.41	\$1,753.25	38.96%
		\$177,578.00	\$70,626.92	\$52,526.66	\$123,153.58	69.35%
140-000-000	PUBLIC SERVICES					
140-000-514.02	Salaries	\$24,000.00	\$0.00	\$0.00	\$0.00	0.00%
140-000-534	Contractual Services	\$5,000.00	\$0.00	\$0.00	\$0.00	0.00%
140-000-541.02	General Materials & Supplies	\$5,300.00	\$0.00	\$0.00	\$0.00	0.00%
		\$34,300.00	\$0.00	\$0.00	\$0.00	0.00%
170-000-000	OPERATION & MAINTENANCE OF PLANT					
171-000-511	Salaries - Administrative	\$30,000.00	\$0.00	\$11,520.81	\$11,520.81	38.40%
171-000-517	Service Staff	\$349,291.00	\$148,018.38	\$98,599.61	\$246,617.99	70.61%
176-000-575	Telephone	\$76,700.00	\$29,135.71	\$18,739.73	\$47,875.44	62.42%
		\$455,991.00	\$177,154.09	\$128,860.15	\$306,014.24	67.11%
181-000-000	GENERAL ADMINISTRATION					
181-000-000	PRESIDENT'S OFFICE					
181-000-511	Salaries - Administrative	\$86,908.00	\$36,211.70	\$25,348.19	\$61,559.89	70.83%
181-000-516	Salaries - Secretarial	\$27,338.00	\$11,390.95	\$7,973.70	\$19,364.65	70.83%
181-000-534	Contractual Services	\$100.00	\$0.00	\$0.00	\$0.00	0.00%
181-000-541.01	General Materials & Supplies	\$2,000.00	\$2,110.92	\$679.30	\$2,790.22	139.51%
181-000-550	Conference & Meeting Expense	\$6,500.00	\$1,756.98	\$985.04	\$2,742.02	42.18%
181-000-556	Special Affairs	\$4,500.00	\$1,542.17	\$2,037.77	\$3,579.94	79.55%
181-000-559	Other Conf. & Meeting Expense	\$8,525.00	\$5,921.88	\$1,413.75	\$7,335.63	86.05%
		\$135,871.00	\$58,934.60	\$38,437.75	\$97,372.35	71.67%

182-000-000 VICE PRESIDENT OF BUSINESS SERVICES

182-000-511	Salaries - Administrative	\$112,145.00	\$52,080.68	\$29,020.81	\$81,101.49	72.32%
182-000-512	Salaries - Professional	\$21,250.00	\$4,592.39	\$6,875.00	\$11,467.39	53.96%
182-000-516	Salaries - Secretarial	\$102,920.00	\$42,814.35	\$30,018.31	\$72,832.66	70.77%
182-000-534	Contractual Services	\$5,500.00	\$1,680.10	\$3,543.90	\$5,224.00	94.98%
182-000-541.01	General Materials & Supplies	\$8,500.00	(\$1,937.01)	\$1,179.23	(\$757.78)	-8.92%
182-000-550	Conference & Meeting Expense	\$5,000.00	\$3,349.50	\$259.15	\$3,608.65	72.17%
		\$255,315.00	\$102,580.01	\$70,896.40	\$173,476.41	67.95%

190-000-000 INSTITUTIONAL SUPPORT

191-000-000 BOARD OF TRUSTEES

191-000-516	Salaries - Secretary	\$913.00	\$380.35	\$266.21	\$646.56	0.00%
191-000-535	Contractual -Legal	\$2,000.00	\$4,974.27	\$782.85	\$5,757.12	287.86%
191-000-549	Other Gen Supplies (Election)	\$1,000.00	\$590.43	\$279.22	\$869.65	86.97%
191-000-550	Conference & Meeting Expense	\$6,500.00	\$3,548.86	\$1,570.94	\$5,119.80	78.77%
		\$10,413.00	\$9,493.91	\$2,899.22	\$12,393.13	119.02%

192-000-000 INSTITUTIONAL SUPPORT EXPENSES

192-000-516	Salaries - Secretarial	\$18,708.00	\$8,204.40	\$5,495.70	\$13,700.10	73.23%
192-000-518.01	Student Employees (Federal)	\$55,329.00	\$103,007.37	\$57,147.49	\$160,154.86	289.46%
192-000-521	Group Medical & Life Insurance	\$518,000.00	\$283,847.19	\$128,722.95	\$412,570.14	79.65%
192-000-524	Medical Examination Fee	\$6,000.00	\$0.00	\$0.00	\$0.00	0.00%
192-000-529	Tuition Reimbursement	\$9,800.00	\$3,506.60	\$3,400.00	\$6,906.60	70.48%
192-000-529.01	Retirement Benefits	\$13,600.00	\$13,572.80	\$0.00	\$13,572.80	99.80%
192-000-532	- Curriculum Development	\$1,000.00	\$699.85	\$0.00	\$699.85	69.99%
192-000-537	- UNALLOCATED Contractual	\$1,000.00	\$431.75	\$201.50	\$633.25	63.33%
192-000-539	In-Service Training	\$7,000.00	\$808.89	\$685.20	\$1,494.09	21.34%
192-000-541.02	Supplies (Faculty Association)	\$200.00	\$118.40	\$47.35	\$165.75	82.88%
192-000-544.02	Postage	\$51,400.00	\$15,419.01	\$16,638.71	\$32,057.72	62.37%
192-000-546	Publications/Dues	\$16,000.00	\$9,375.90	\$8,487.35	\$17,863.25	111.65%
192-000-547	Advertising	\$1,200.00	\$758.14	\$784.08	\$1,542.22	128.52%
192-000-554	Recruitment	\$8,000.00	\$18,328.92	\$2,442.61	\$20,771.53	259.64%
		\$707,237.00	\$458,079.22	\$224,052.94	\$682,132.16	96.45%

192-000-580 CAPITAL OUTLAY

192-000-585	Equipment	\$100,756.00	\$54,326.56	\$30,597.98	\$84,924.54	84.29%
192-000-589	- Projects	\$33,344.00	\$4,360.25	\$35,877.58	\$40,237.83	0.00%
		\$134,100.00	\$58,686.81	\$66,475.56	\$125,162.37	93.34%

193-000-000 AFFIRMATIVE ACTION

193-000-534	Contractual Services	\$100.00	\$0.00	\$0.00	\$0.00	0.00%
193-000-541.02	General Materials & Supplies	\$500.00	\$432.50	\$42.15	\$474.65	94.93%
193-000-550	Conference & Meeting Expense	\$1,000.00	\$32.00	\$0.00	\$32.00	3.20%
		\$1,600.00	\$464.50	\$42.15	\$506.65	31.67%

194-000-000 INSTITUTIONAL RESEARCH

194-000-534	Contractual Services	\$1,000.00	\$0.00	\$0.00	\$0.00	0.00%
194-000-541.02	- General Materials & Supplies	\$1,000.00	\$20.95	\$48.84	\$69.79	6.98%
		\$2,000.00	\$20.95	\$48.84	\$69.79	3.49%

195-000-000 INFORMATION SYSTEMS

195-000-511	Salaries - Administrative	\$49,549.00	\$20,645.40	\$14,451.78	\$35,097.18	70.83%
195-000-512	Professional	\$40,769.00	\$16,987.01	\$11,890.90	\$28,877.91	70.83%
195-000-516	Office Staff	\$35,514.00	\$14,797.60	\$10,358.32	\$25,155.92	70.83%
195-000-534.01	Contractual - Admin.	\$129,550.00	\$34,470.26	\$29,181.63	\$63,651.89	49.13%
195-000-534.02	Contractual - Educ.	\$29,300.00	\$3,069.00	\$0.00	\$3,069.00	10.47%
195-000-541.01	General Supplies - Admin.	\$15,900.00	\$7,811.50	\$4,787.67	\$12,599.17	79.24%
195-000-541.02	General Supplies - Educ.	\$9,500.00	\$1,463.98	\$2,830.83	\$4,294.81	45.21%
195-000-550	- Conference & Meeting Expense	\$8,500.00	\$604.90	\$172.15	\$777.05	9.14%
		<hr/>				
		\$318,582.00	\$99,849.65	\$73,673.28	\$173,522.93	54.47%

196-000-000 VICE PRESIDENT OF COLLEGE ADVANCEMENT

196-000-511	Salaries - Administrative	\$57,512.00	\$23,963.30	\$16,774.31	\$40,737.61	70.83%
196-000-516	Salaries - Secretarial	\$19,948.00	\$8,311.70	\$5,818.19	\$14,129.89	70.83%
196-000-534	Contractual Services	\$200.00	\$0.00	\$0.00	\$0.00	0.00%
196-000-541.01	General Materials & Supplies	\$2,600.00	\$1,130.72	\$1,099.25	\$2,229.97	85.77%
196-000-550	Conference & Meeting Expense	\$4,000.00	\$1,553.07	\$719.04	\$2,272.11	56.80%
		<hr/>				
		\$84,260.00	\$34,958.79	\$24,410.79	\$59,369.58	70.46%

197-000-593 TUITION CHARGE-BACK

\$25,000.00	\$12,234.87	\$3,744.42	\$15,979.29	63.92%
<hr/>				
\$25,000.00	\$12,234.87	\$3,744.42	\$15,979.29	63.92%

199-000-600 PROVISION FOR CONTINGENCIES

\$2,850.00	\$0.00	\$0.00	\$0.00	0.00%
\$2,850.00	\$0.00	\$0.00	\$0.00	0.00%

TOTAL EDUCATIONAL FUND EXPENDITURES.

\$6,071,000.00	\$2,365,804.65	\$1,879,111.31	\$4,244,915.96	69.92%
<hr/>				

OPERATIONS & MAINTENANCE FUND

270-000-000 OPERATIONS & MAINTENANCE FUND

270-000-534.01	Contractual Services	\$59,150.00	\$36,639.03	\$24,575.78	\$61,214.81	103.49%
270-000-541.04	General Materials & Supplies	\$65,000.00	\$14,237.57	\$13,364.87	\$27,602.44	42.47%
270-000-550	- Conference & Meeting Expense	\$2,200.00	\$1,133.67	\$2,601.79	\$3,735.46	169.79%
		<hr/>				
		\$126,350.00	\$52,010.27	\$40,542.44	\$92,552.71	73.25%
271-000-571	Gas	\$80,000.00	\$33,013.68	\$23,094.77	\$56,108.45	70.14%
276-000-573	Electricity	\$235,000.00	\$90,919.03	\$56,829.96	\$147,748.99	62.87%
276-000-587	Equipment	\$5,400.00	\$3,400.00	\$3,959.26	\$7,359.26	136.28%

290-000-000	INSTITUTIONAL SUPPORT					
299-000-600	Provision for Contingencies	\$2,250.00	\$0.00	\$0.00	\$0.00	0.00%

		\$2,250.00	\$0.00	\$0.00	\$0.00	0.00%
TOTAL OPERATIONS & MAINTENANCE FUND EXPENDITURES		\$449,000.00	\$179,342.98	\$124,426.43	\$303,769.41	67.65%
		=====				
TOTAL OPERATING FUND EXPENDITURES		\$6,520,000.00	\$2,545,147.63	\$1,999,799.79	\$4,544,947.42	69.71%
		=====				

EXPENDITURES	BUDGET	EXPENDITURES AS OF 12/13/91	EXP. JAN., FEB., & MAR.	TOTAL EXPENDITURES	%
LIABILITY, PROTECTION & SETTLEMENT FUND					
1292-000-000 Institutional Support					
1292-000-517 - Service Staff Salaries/Boiler	\$67,000.00	\$27,246.67	\$19,647.27	\$46,893.94	69.99%
1292-000-521 Health & Life Insurance	\$10,000.00	\$0.00	\$0.00	\$0.00	0.00%
1292-000-523 Worker's Compensation	\$30,000.00	\$20,364.27	\$2,765.20	\$23,129.47	77.10%
1292-000-526 Unemployment Insurance	\$15,000.00	\$722.43	\$778.57	\$1,501.00	10.01%
1292-000-527 Medicare	\$23,000.00	\$9,815.28	\$7,686.22	\$17,501.50	76.09%
1292-000-528 - Tort Liability Insurance	\$60,000.00	\$34,650.00	\$117,581.87	\$152,231.87	253.72%
1292-000-529 FICA Insurance	\$20,000.00	\$1,371.85	\$268.14	\$1,639.99	8.20%
1292-000-535 Legal Controls	\$12,000.00	\$2,475.00	\$2,676.50	\$5,151.50	42.93%
TOTAL LIABILITY, PROTECTION & SETTLEMENT EXPENDITURES	\$237,000.00	\$96,645.50	\$151,403.77	\$248,049.27	104.66%
=====					
AUDIT FUND					
1192-000-531 - Contractual Services	\$24,000.00	\$23,575.00	\$350.00	\$23,925.00	
TOTAL AUDIT FUND EXPENDITURES	\$24,000.00	\$23,575.00	\$350.00	\$23,925.00	99.69%
=====					
WORKING CASH FUND					
700-000-711 - Transfer to Educational Fund	\$156,000.00	\$0.00	\$0.00	\$0.00	0.00%
700-000-711.01 - Transfer to Operations and Maintenance Fund	\$19,000.00	\$0.00	\$0.00	\$0.00	0.00%
TOTAL WORKING CASH FUND EXPENDITURES	\$175,000.00	\$0.00	\$0.00	\$0.00	0.00%
=====					
CAPITAL PROJECTS					
BUILDING BOND PROCEEDS FUND					
1390-000-000 Institutional Support					
1390-000-589 Other Capital Outlay	\$205,000.00	\$0.00	\$0.00	\$0.00	0.00%
TOTAL BUILDING BOND PROCEEDS FUND EXPENDITURES	\$205,000.00	\$0.00	\$0.00	\$0.00	0.00%
=====					
OPERATIONS AND MAINTENANCE (RESTRICTED) FUND					
0390-000-584 Capital (Protection, Health and Safety)	\$533,544.00	\$112,599.95	\$76,647.77	\$189,247.72	35.47%
TOTAL OPERATIONS AND MAINTENANCE (RESTRICTED) FUND	\$533,544.00	\$112,599.95	\$76,647.77	\$189,247.72	35.47%
=====					
PROPRIETARY FUNDS					
Bookstore Expenditures	\$612,000.00	\$335,268.20	\$234,792.68	\$570,060.88	93.15%
TOTAL PROPRIETARY FUNDS EXPENDITURES	\$612,000.00	\$335,268.20	\$234,792.68	\$570,060.88	93.15%
=====					

REVENUE	BUDGET	RECEIPTS AS OF 12/31/91	RECEIPTS JAN., FEB. & MAR.	TOTAL RECEIPTS	%
100-000-400 EDUCATIONAL FUND					
100-000-410 Local Governmental Sources					
100-000-411.01 1/2 1990 Taxes	\$806,000.00	\$768,752.12	\$20,124.42	\$788,876.54	97.88%
100-000-411.02 1/2 1991 Taxes	\$822,000.00	\$0.00	\$611.25	\$611.25	0.07%
100-000-414 Chargeback Revenue	\$4,000.00	\$4,764.78	\$3,845.67	\$8,610.45	215.26%
Back Taxes	\$0.00	\$45.20	\$0.00	\$45.20	
TOTAL LOCAL GOVERNMENT REVENUE	\$1,632,000.00	\$773,562.10	\$24,581.34	\$798,143.44	48.91%
100-000-420 State Governmental Sources					
100-000-421 - ICCB Credit Hour Grants	\$1,430,625.00	\$397,885.75	\$317,426.74	\$715,312.49	50.00%
100-000-421.02 - State Equalization Grants	\$519,282.00	\$129,820.50	\$129,821.16	\$259,641.66	50.00%
100-000-423 - Vocational Technical Education					
100-000-423.01.1 - Regular Reimbursement	\$75,000.00	\$0.00	\$8,339.00	\$8,339.00	11.12%
100-000-427 - Corporate Personal Property Replacement Tax	\$184,000.00	\$34,407.79	\$21,456.07	\$55,863.86	30.36%
TOTAL STATE GOVERNMENT REVENUE	\$2,208,907.00	\$562,114.04	\$477,042.97	\$1,039,157.01	47.04%
100-000-430 Federal Governmental Sources					
Federal WorkStudy	\$0.00	\$108,157.73	\$50,322.10	\$158,479.83	
100-000-439 - Other Federal	\$6,800.00	\$455.00	\$455.00	\$910.00	13.38%
TOTAL FEDERAL GOVERNMENT REVENUE	\$6,800.00	\$108,612.73	\$50,777.10	\$159,389.83	2343.97%
100-000-440 Student Tuition and Fees					
100-000-441.01 Summer	\$135,700.00	\$146,769.34	\$0.00	\$146,769.34	108.16%
100-000-441.02 Fall	\$644,000.00	\$200,000.00	\$451,995.93	\$651,995.93	101.24%
100-000-441.03 - Spring	\$642,000.00	\$0.00	\$0.00	\$0.00	0.00%
TOTAL TUITION	\$1,421,700.00	\$346,769.34	\$451,995.93	\$798,765.27	56.18%
100-000-442.01 - Graduation Fees	\$4,600.00	\$690.00	\$2,110.00	\$2,800.00	60.87%
100-000-442.04 Transcript Fees	\$1,900.00	\$707.00	\$638.00	\$1,345.00	70.79%
100-000-442.05 Lab Fees	\$38,800.00	\$3,220.80	\$19,629.20	\$22,850.00	58.89%
100-000-442 Total Fees	\$45,300.00	\$4,617.80	\$22,377.20	\$26,995.00	59.59%
100-000-442.09 Public Service Income	\$34,300.00	\$0.00	\$0.00	\$0.00	0.00%
TOTAL TUITION AND FEES REVENUE	\$1,501,300.00	\$351,387.14	\$474,373.13	\$825,760.27	55.00%

100-000-470	Other Facilities Rental	\$0.00	\$141.88	\$469.23	\$611.11	
100-000-470	Investment Interest Revenue	\$50,000.00	\$18,440.64	\$13,622.16	\$32,062.80	64.13%
100-000-499	Miscellaneous Revenue	\$73,393.00	\$48,308.54	\$6,625.70	\$54,934.24	74.85%
100-000-721	Transfer from Working Cash	\$156,000.00	\$0.00	\$0.00	\$0.00	0.00%
100-000-721.01	Transfer from Auxiliary Fund	\$194,600.00	\$0.00	\$0.00	\$0.00	0.00%
TOTAL OTHER SOURCES REVENUE		\$473,993.00	\$66,891.06	\$20,717.09	\$87,608.15	18.48%
TOTAL EDUCATIONAL FUND REVENUE		\$5,823,000.00	\$1,862,567.07	\$1,047,491.63	\$2,910,058.70	49.98%
=====						
200-000-400 OPERATIONS AND MAINTENANCE FUND						
200-000-410 Local Governmental Sources						
200-000-411.01	- 1990 Taxes	\$99,000.00	\$93,443.01	\$2,452.90	\$95,895.91	96.86%
200-000-411.02	- 1991 Taxes	\$101,000.00	\$0.00	\$75.67	\$75.67	0.07%
	Back Taxes	\$0.00	\$5.54	\$0.00	\$5.54	0.00%
Total Local Government		\$200,000.00	\$93,448.55	\$2,528.57	\$95,977.12	47.99%
200-000-420 State Governmental Sources						
200-000-427	- Replacement of Corporate Personal Property Tax	\$22,600.00	\$8,191.30	\$0.00	\$8,191.30	36.24%
200-000-469	Facilities Revenue	\$5,000.00	\$1,408.75	\$1,559.53	\$2,968.28	0.00%
200-000-470	Investment Interest Revenue	\$30,000.00	\$17,246.81	\$13,051.93	\$30,298.74	101.00%
	Other Revenue	\$0.00	\$3,073.19	\$850.88	\$3,924.07	\$0.00
200-000-721	Transfer from Working Cash Fund	\$19,000.00	\$0.00	\$0.00	\$0.00	0.00%
200-000-721.01	Transfer from Auxiliary Fund	\$5,400.00	\$0.00	\$0.00	\$0.00	0.00%
TOTAL OPERATIONS AND MAINTENANCE FUND REVENUE		\$282,000.00	\$123,368.60	\$17,990.91	\$141,359.51	50.13%
=====						
TOTAL OPERATING BUDGETED REVENUE		\$6,105,000.00	\$1,985,935.67	\$1,065,482.54	\$3,051,418.21	49.98%
=====						

SPECIAL REVENUE

LIABILITY, PROTECTION, AND SETTLEMENT FUND

1200-000-410 Local Governmental Sources

1200-000-411.01	1990 Taxes	\$130,000.00	\$122,069.13	\$3,200.95	\$125,270.08	96.36%
1200-000-411.02	1991 Taxes	\$115,000.00	\$0.00	\$99.13	\$99.13	0.09%
	Back Taxes	\$0.00	\$7.21	\$0.00	\$7.21	0.00%
1200-000-470	Interest Income	\$7,000.00	\$7,098.99	\$4,459.07	\$11,558.06	165.12%

TOTAL LIABILITY, PROTECTION, AND
SETTLEMENT FUND REVENUE

\$252,000.00	\$129,175.33	\$7,759.15	\$136,934.48	54.34%
--------------	--------------	------------	--------------	--------

=====

AUDIT FUND

1100-000-410 Local Governmental Sources

1100-000-411.01	1990 Taxes	\$11,260.00	\$10,588.58	\$276.81	\$10,865.39	96.50%
1100-000-411.02	1991 Taxes	\$11,260.00	\$0.00	\$8.58	\$8.58	0.08%
	Back Taxes	\$0.00	\$0.63	\$0.00	\$0.63	0.00%
1100-000-470	Interest Income	\$1,480.00	\$540.88	\$212.02	\$752.90	50.87%

TOTAL AUDIT FUND REVENUE

\$24,000.00	\$11,130.09	\$497.41	\$11,627.50	48.45%
-------------	-------------	----------	-------------	--------

=====

DEBT SERVICES

WORKING CASH FUND

700-000-470 Other Sources

700-000-470	- Interest Income	\$175,000.00	\$39,915.83	\$39,011.91	\$78,927.74	45.10%
-------------	-------------------	--------------	-------------	-------------	-------------	--------

TOTAL WORKING CASH FUND REVENUE

\$175,000.00	\$39,915.83	\$39,011.91	\$78,927.74	45.10%
--------------	-------------	-------------	-------------	--------

=====

CAPITAL PROJECTS

BUILDING BOND PROCEEDS FUND

1300-000-470 Other Sources

1300-000-470 Interest Income	\$52,000.00	\$20,986.96	\$14,118.51	\$35,105.47	67.51%
------------------------------	-------------	-------------	-------------	-------------	--------

TOTAL BUILDING BOND PROCEEDS FUND REVENUE	\$52,000.00	\$20,986.96	\$14,118.51	\$35,105.47	67.51%
-------------------------------------------	-------------	-------------	-------------	-------------	--------

PROTECTION, HEALTH, AND SAFETY FUND

0300-000-410 Local Governmental Sources

0300-000-411.01 - 1990 Taxes	\$165,000.00	\$155,730.32	\$4,088.68	\$159,819.00	96.86%
------------------------------	--------------	--------------	------------	--------------	--------

0300-000-411.02 - 1991 Taxes	\$168,000.00	\$0.00	\$126.12	\$126.12	0.08%
------------------------------	--------------	--------	----------	----------	-------

Back Taxes	\$0.00	\$9.22	\$0.00	\$9.22	0.00%
------------	--------	--------	--------	--------	-------

Total Local Government Sources	\$333,000.00	\$155,739.54	\$4,214.80	\$159,954.34	48.03%
--------------------------------	--------------	--------------	------------	--------------	--------

0300-000-470 - Interest Income	\$1,000.00	\$2,671.86	\$1,724.80	\$4,396.66	439.67%
--------------------------------	------------	------------	------------	------------	---------

	\$1,000.00	\$2,671.86	\$1,724.80	\$4,396.66	
--	------------	------------	------------	------------	--



TOTAL PROTECTION, HEALTH, AND SAFETY FUND REVENUE	\$334,000.00	\$158,411.40	\$5,939.60	\$164,351.00	49.21%
---------------------------------------------------	--------------	--------------	------------	--------------	--------

PROPRIETARY FUNDS

BOOKSTORE	\$667,000.00	\$353,778.25	\$194,555.60	\$548,333.85	82.21%
-----------	--------------	--------------	--------------	--------------	--------

TOTAL REVENUE	\$7,609,000.00	\$2,699,333.53	\$1,327,364.72	\$4,026,698.25	52.92%
---------------	----------------	----------------	----------------	----------------	--------

SANTA VALLEY COMMUNITY COLLEGE

APPROVED BY

PRESIDENT

SECRETARY
DATE 3-23-92