

**SAUK VALLEY COMMUNITY COLLEGE
BOARD OF TRUSTEES
AGENDA**

**Third Floor Board Room
Dixon, IL**

**June 25, 2012
7:00 p.m.**

- 1.0 Call to Order/Roll Call**
- 2.0 Consent Agenda**
 - 2.1 Approval of Agenda**
 - 2.2 Approval of Minutes, May 21, 2012**
 - 2.3 Treasurer's Report**
 - 2.4 Bills Payable**
 - 2.5 Payrolls**

| | |
|---------------|--------------|
| May 31, 2012 | \$182,334.52 |
| June 14, 2012 | \$195,100.49 |
 - 2.6 Budget Report**
 - 2.7 Prevailing Wages Resolution**
 - 2.8 ICCB RAMP Project**
- 3.0 Reports/Information**
 - 3.1 President's Report**
 - 3.2 Reports/Comments from Board Members**
 - 3.3 Communication from Visitors**
 - 3.4 Board Policy Review – Board Policies: 103.02 Trustee Compensation and Expenses; 103.03 Trustee Workshops and Seminars; 104.01 Adopting, Rescinding and Revising Board Policies**
- 4.0 Action Items**
 - 4.1 Tentative 2012-2013 Budget – First Reading**
 - 4.2 Bid Award – Classroom Technology Equipment Purchase**
 - 4.3 Bid Award – Fire Science Clothing Purchase**
- 5.0 Closed Session – (Appointment, employment, compensation, discipline, performance or dismissal of specific employees of the College; closed session minutes consideration; pending litigation probable or imminent; for the discussion of matters relating to an individual student)**
- 6.0 Action Items**
 - 6.1 Academic Appeal Decision**
 - 6.2 Faculty Appointment – Electrical and Industrial Technology**
 - 6.3 Approval of Closed Session Minutes of May 21, 2012**
- 7.0 Adjournment**

**SAUK VALLEY COMMUNITY COLLEGE BOARD OF TRUSTEES MEETING
MINUTES
June 25, 2012**

The Board of Trustees of Sauk Valley Community College met in regular session at 7:00 p.m. on June 25, 2012 in the Board Room at Sauk Valley Community College, 173 Illinois Route #2, Dixon, Illinois.

Call to Order: Chair Andersen called the meeting to order at 7:00 p.m. and the following members answered roll call:

| | |
|-----------------|-----------------|
| Ed Andersen | Lisa Wiersema |
| Andrew Bollman | Margaret Tyne |
| Robert Thompson | William Simpson |
| Scott Stoller | |

SVCC Staff:

President George J. Mihel
Attorney Miller
Academic Vice President Alan Pfeifer
Dean of Business Services Paula Meyer
Coordinator of Marketing and Public Relations Rachel Marco
Dean of Health Professions Janet Lynch
Director of Human Resources Kathryn Snow
Faculty Member Penny Duncan
Faculty Member Robert Duncan
Faculty Member Towana Ernst
Administrative Assistant Debra Dillow

Absent: Student Trustee Karrow

Consent Agenda: It was moved by Member Tyne and seconded by Member Simpson that the Board approve the Consent Agenda. In a roll call vote, all voted aye. Motion carried.

President's Report: Dr. Mihel shared with the Board that ICCB approved the degree program for Fire Science; the Foundation is planning a fundraiser event on September 29, 2012, "Red Solo Cup" Casino Night; science lab remodel is on schedule; Sauk is working with Woodlawn Arts Academy with a performance of "A Midsummer Night's Dream" and the 2011-2012 Annual Report to the Community is in the final stage. This report will be sent out primarily electronically and available on our website. Paula Meyer provided an overview of state funding for fiscal year 2012.

Board Policy Review: Dr. Mihel reviewed Board Policies 103.02 Trustee Compensation and Expenses; 103.03 Trustee Workshops and Seminars; and 104.01 Adopting, Rescinding and Revising Board Policies and will recommend no changes.

Reports: *ICCTA Report:* Member Bollman reported on the recent ICCTA meeting held on June 1. He indicated that new officers were elected and discussed the FY 2013 budget reductions. He also distributed a report presented by ICCTA on "Illinois: A Demographic and Educational Profile".

Foundation: No report

Student Trustee Report: Not Present

Budget 2012-2013 – First Reading: It was moved by Member Bollman and seconded by Member Stoller that the Board approve the 2012-2013 Tentative Budget for first reading. In a roll call vote, all voted aye. Motion carried.

Bid Award – Classroom Technology Equipment Purchase: It was moved by Member Thompson and seconded by Member Wiersema that the Board approve the purchase of the Classroom Technology Equipment from Inter Pacific, Inc. in the amount of \$107,291.50. In a roll call vote, all voted aye. Motion carried.

Bid Award – Fire Science Clothing Purchase: It was moved by Member Bollman and seconded by Member Stoller that the Board approve the purchase of Fire Science Clothing from the Illinois Fire Store in the amount of \$16,930. In a roll call vote, all voted aye. Motion carried.

Closed Session: At 7:35 p.m. it was moved by Member Tyne and seconded by Member Wiersema that the Board go into closed session for the purpose of appointment, employment, compensation, discipline, performance or dismissal of specific employees of the College; closed session minutes consideration; pending litigation probable or imminent; for the discussion of matters relating to an individual student. In a roll call vote, all voted aye. Motion carried.

The Board returned to regular session at 9:20 p.m.

Academic Appeal Decision: It was moved by Member Tyne and seconded by Member Simpson that the Board uphold the administration's decision of the Academic Appeal. In a roll call vote, all voted aye. Motion carried.

Faculty Appointment -
Electrical and Industrial
Technology:

It was moved by Member Bollman and seconded by Member Stoller that the Board approve the employment of Mr. Jeffrey Johnson as an Assistant Instructor of Electrical and Industrial Technology starting August 17, 2012 at an annual salary of \$43,257. In a roll call vote, all voted aye. Motion carried.

Closed Session Minutes
May 21, 2012:

It was moved by Member Stoller and seconded by Member Wiersema that the Board approve the closed session minutes of May 21, 2012 as presented. In a roll call vote, all voted aye. Motion carried.

Adjournment:

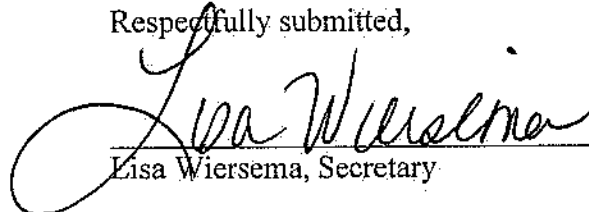
Since the scheduled business was completed, it was moved by Member Bollman and seconded by Member Stoller that the Board adjourn. In a roll call vote, all voted aye. Motion carried.

The meeting adjourned at 9.24 p.m.

Next Meeting:

The next regular meeting of the Board will be at 7:00 p.m. on July 30, 2012 in the Board Room.

Respectfully submitted,



Lisa Wiersema, Secretary

Edward A. ...
BOARD CHAIR
John ...
BOARD SECRETARY

SAUK VALLEY COMMUNITY COLLEGE
BOARD OF TRUSTEES - TREASURER'S REPORT
As of May 31, 2012

CHECKING ACCOUNTS

INTEREST BEARING ACCOUNTS

General Account - Sterling Federal Bank

Illinois Funds - Firststar Bank, Springfield

SUBTOTAL

MONEY MARKET

Merrill Lynch Wealth Management

SFB Investment Center

SUBTOTAL

TOTAL CHECKING ACCOUNTS

INTEREST

RATE

DATE 6/25/12

AMOUNT

0.015

\$2,135,385.39

0.089

5,388,144.13

7,523,529.52

1.000

398,781.08

0.000

3,458,731.48

3,857,512.56

\$11,381,042.08

INVESTMENTS

FINANCIAL INSTITUTION

First National Bank, Amboy

Farmers State Bank, Sublette

Farmers State Bank, Sublette

SUBTOTAL

MATURITY

DATE

07-23-2012

0.600

500,000

02-13-2013

0.550

1,000,000

02-17-2013

0.650

1,010,052

2,510,052

MERRILL LYNCH:

Federal Farm Cr Bks Cons Bd

Federal Farm Cr Bks Global Cons Bd

Federal Natl Mtg Assn Call

State Bank of India CD

Goldman Sachs Bank USA CD

Discover Bank CD

Federal Home Loan Bank

Federal Home Loan Bank

Federal Home Loan Bank

Federal Natl Mtg Assn

Federal Natl Mtg Assn

SUBTOTAL

YIELD

1.740

2.147

4.750

1.010

0.960

1.010

1.375

2.750

1.250

2.050

3.724

PRICE

583,172.60

610,038.00

412,860.00

247,038.75

205,055.28

247,024.86

648,633.45

510,714.70

686,265.75

501,245.00

721,562.40

\$5,373,610.79

SFB INVESTMENT CENTER - CHALLENGE GRANTS

Farmers State Bank, Hartland, MN

Southwest Cap Bk Natl Assn Ft Myers, FL

American Express Centurion Bk Salt

Bridgeview Bk Group IL CTF

Doral Bk Catano P R

Goldman Sachs Bank

09-24-2012

12-26-2012

03-25-2013

03-25-2013

05-28-2013

10-21-2013

1.350

1.500

2.000

1.700

2.000

1.050

150,000.00

200,000.00

250,000.00

250,000.00

250,000.00

250,000.00

1,350,000.00

SFB INVESTMENT CENTER - FUNDING BONDS

| | | | |
|---------------------------------------|------------|-------|--------------------|
| Bank of China New York City NY | 07-16-2012 | 1.000 | 250,000.00 |
| Florida Cap Bk Natl Assn Jacksonville | 07-19-2012 | 1.150 | 250,000.00 |
| Wilmington TR CO DEL | 01-14-2013 | 1.250 | 250,000.00 |
| GE Money Bk Instl, Draper, UT | 01-16-2013 | 1.250 | 250,000.00 |
| Banco Bilbao Vizcaya | 01-23-2013 | 1.450 | 250,000.00 |
| Citizens Bk Flint, MI | 01-28-2013 | 1.300 | 250,000.00 |
| Avenue Bk Nashville, TN | 01-28-2013 | 1.200 | 250,000.00 |
| BMW BK North Amer, Salt Lake City, UT | 01-30-2013 | 1.250 | 250,000.00 |
| Middleton Community Bank, WI | 04-05-2013 | 1.250 | 250,000.00 |
| | | | <hr/> 2,250,000.00 |

TOTAL INVESTMENTS

\$11,483,663.17

REPORT SVCRNR
FISCAL YEAR 2012

Sauk Valley Community College
Check Register
From 05/17/12 To 06/25/12

RUN DATE: 06/18/12
TIME: 12:09 PM
PAGE: 5

| <u>PAYEE/VENDOR</u> | <u>FUND</u> | <u>ORGANIZATION</u> | <u>ACCOUNT</u> | <u>COMMODITY</u> | <u>ITEM AMOUNT</u> |
|---------------------------------|-------------|----------------------------|----------------------------|--|--------------------|
| Karrow, Kala | 01 | | Scholarship Payable | 2140 Student Emergency Aid | 500.00 |
| Consolidated Management Co | 01 | | Cafeteria payable | Punch A Lunch Sales May 2012 | 443.55 |
| Whiteside County Senior Center | 01 | | Whiteside Bus payable | Bus Sales May 12 | 40.00 |
| Whiteside County ROE | 01 | | Other Liabilities | GED Application Fee | 50.00 |
| Brown Hay & Stephens LLP | 01 | Board of Trustees | Legal Services | Legal Fees | 198.00 |
| Brown Hay & Stephens LLP | 01 | Board of Trustees | Legal Services | Legal Fees | 3,217.50 |
| Ward Murray Pace & Johnson P.C. | 01 | Board of Trustees | Legal Services | Legal Fees | 2,765.00 |
| Sauk Valley Media | 01 | Board of Trustees | Advertising | Certificate of Publications | 22.75 |
| Sauk Valley Media | 01 | Board of Trustees | Advertising | Legal Notice | 68.25 |
| Consolidated Management Co | 01 | Board of Trustees | Conference/Meeting Expense | Commencement | 16.09 |
| Consolidated Management Co | 01 | Board of Trustees | Conference/Meeting Expense | Board Meeting-May | 46.65 |
| Fifth Third Bank | 01 | Board of Trustees | Conference/Meeting Expense | Legislative Dinner & AACC Conference | 1,251.26 |
| Karrow, Kala | 01 | Board of Trustees | Conference/Meeting Expense | Advanced Travel for Conference Bloomington | 172.00 |
| Baldwin Cooke Company | 01 | President's Office | Office Supplies | 2013 Calendar Refill | 15.08 |
| Follett Bookstore | 01 | President's Office | Office Supplies | Department Bookstore Charges | 8.95 |
| Rotary Club of Sterling | 01 | President's Office | Publications and Dues | Rotary Club Expenss | 130.00 |
| Higher Learning Commission | 01 | President's Office | Conference/Meeting Expense | HLC Conference Registration | 435.00 |
| Creative Printing | 01 | College Relations's Office | Office Supplies | Business Cards | 35.00 |
| ComCast Spotlight Inc | 01 | College Relations's Office | Advertising | April TV Ads | 2,658.00 |
| Follett Bookstore | 01 | College Relations's Office | Advertising | Department Bookstore Charges | 20.72 |
| Northern Public Radio | 01 | College Relations's Office | Advertising | Contracted Ads | 481.00 |
| Northern Public Radio | 01 | College Relations's Office | Advertising | Monthly Radio Contract | 481.00 |
| Pinney Printing Company | 01 | College Relations's Office | Advertising | ViewBook | 19,748.22 |
| Sauk Valley Media | 01 | College Relations's Office | Advertising | Internet Display | 240.00 |
| Sauk Valley Media | 01 | College Relations's Office | Advertising | SVCC Grads | 697.50 |
| WIXN FM - WIXN AM-WRCV-FM | 01 | College Relations's Office | Advertising | Monthly Radio Ads | 200.00 |

REPORT SVRCHK
FISCAL YEAR 2012

Sauk Valley Community College
Check Register
From 05/17/12 To 06/25/12

RUN DATE: 06/18/12
TIME: 12:09 PM
PAGE: 3

| <u>PAYEE/VENDOR</u> | <u>FUND</u> | <u>ORGANIZATION</u> | <u>ACCOUNT</u> | <u>COMMODITY</u> | <u>ITEM AMOUNT</u> |
|---------------------------|-------------|---------------------|------------------|------------------|--------------------|
| Maginnis, Diane | 01 | | Accounts Payable | Foundation | 35.00 |
| Markel, Diane | 01 | | Accounts Payable | Online Refund | 35.00 |
| May, Jessica | 01 | | Accounts Payable | Online Refund | 35.00 |
| Meier, Branden | 01 | | Accounts Payable | Pell | 13.09 |
| Messer, Kate | 01 | | Accounts Payable | Online Refund | 138.67 |
| Minnick, Angela | 01 | | Accounts Payable | Online Refund | 297.00 |
| Montes-Gonzalez, Baltazar | 01 | | Accounts Payable | Pell | 693.00 |
| Montes-Gonzalez, Baltazar | 01 | | Accounts Payable | Pell | 2,775.00 |
| Nares, Ryan | 01 | | Accounts Payable | Online Refund | 20.00 |
| Oostenryk, Meredith | 01 | | Accounts Payable | Online Refund | 237.60 |
| Ortgiesen, Parker | 01 | | Accounts Payable | Online Refund | 297.00 |
| Peterson, Emelia | 01 | | Accounts Payable | Online Refund | 297.00 |
| Pratt, Mariessa | 01 | | Accounts Payable | Online Refund | 297.00 |
| Ringle, Ethan | 01 | | Accounts Payable | Online Refund | 406.00 |
| Rodriguez, Lindsay | 01 | | Accounts Payable | Alternative Loan | 3,048.73 |
| Roe, Kahley | 01 | | Accounts Payable | Online Refund | 297.00 |
| Schmidt, Hannah | 01 | | Accounts Payable | Foundation | 35.00 |
| Schneiderbauer, Sarah | 01 | | Accounts Payable | Online Refund | 297.00 |
| Shankar, Sumana | 01 | | Accounts Payable | Online Refund | 272.00 |
| Slauwhite, Josh | 01 | | Accounts Payable | Online Refund | 15.00 |
| Smith, Ian | 01 | | Accounts Payable | Online Refund | 297.00 |
| Thornton, Benjamin | 01 | | Accounts Payable | Online Refund | 297.00 |
| Trost, Alexandria | 01 | | Accounts Payable | Online Refund | 99.00 |
| Truckenmiller, Jamie | 01 | | Accounts Payable | Online Refund | 36.00 |
| Tumleson, Kayla | 01 | | Accounts Payable | Online Refund | 465.00 |
| Tumleson, Kayla | 01 | | Accounts Payable | Online Refund | 303.00 |

| <u>PAYEE/VENDOR</u> | <u>FUND</u> | <u>ORGANIZATION</u> | <u>ACCOUNT</u> | <u>COMMODITY</u> | <u>ITEM AMOUNT</u> |
|------------------------------------|-------------|---------------------|-------------------------------|---|--------------------|
| Quill Corporation | 01 | | Dislocated Worker Expense | Supplies | 145.97 |
| State Universities Retirement Sy01 | | | SURS Payable | Accrued Surs | 25,641.79 |
| State Universities Retirement Sy01 | | | SURS Payable | Accrued Surs | 22,771.49 |
| Select Employees Credit Union | 01 | | Credit Union Payable | ACCURED W/H Select Employees Credit Union | 2,663.09 |
| Select Employees Credit Union | 01 | | Credit Union Payable | ACCURED W/H Select Employees Credit Union | 1,710.09 |
| SVCC Faculty Association | 01 | | Faculty Association Payable | Accrued SVCC Faculty Assoc. Dues | 1,072.35 |
| Meyer, Lydia | 01 | | Wage Garnishment Payable | Wage Garnishment | 580.00 |
| Meyer, Lydia | 01 | | Wage Garnishment Payable | WAGE GARNISHMENT | 580.00 |
| Community Health Charities of IL01 | | | United Way Payable | ACCURED W/H-Community Health Charities | 40.06 |
| Community Health Charities of IL01 | | | United Way Payable | ACCURED W/H-Community Health Charities | 20.83 |
| United Way of Lee County | 01 | | United Way Payable | Accrued United Way Dixon | 33.50 |
| United Way of Lee County | 01 | | United Way Payable | Accrued United Way Dixon | 10.42 |
| United Way of Whiteside County | 01 | | United Way Payable | Accrued United Way Sterling/Rock Falls | 42.75 |
| United Way of Whiteside County | 01 | | United Way Payable | Accrued United Way Sterling/Rock Falls | 42.75 |
| Gallagher Benefit Services, Inc 01 | | | Optional Life Insurance | Optional Life | 707.07 |
| Gallagher Benefit Services, Inc 01 | | | Optional Life Insurance | Optional Life | 705.53 |
| Gallagher Benefit Services, Inc 01 | | | Optional Disability Insurance | LTD Billing | 746.19 |
| JEM fbo Sauk Valley CC 403b Plan01 | | | Fidelity Investments | ACCURED ANNUITIES-Fidelity Investments | 3,525.00 |
| JEM fbo Sauk Valley CC 403b Plan01 | | | Fidelity Investments | ACCURED ANNUITIES-Fidelity Investments | 300.00 |
| JEM fbo Sauk Valley CC 403b Plan01 | | | Vanguard | ACCURED ANNUITIES-Vanguard | 1,300.00 |
| JEM fbo Sauk Valley CC 403b Plan01 | | | Vanguard | ACCURED ANNUITIES-Vanguard | 1,200.00 |
| JEM fbo Sauk Valley CC 403b Plan01 | | | Valic | ACCURED ANNUITIES-VALIC | 150.00 |
| JEM fbo Sauk Valley CC 403b Plan01 | | | Valic | ACCURED ANNUITIES-VALIC | 150.00 |
| JEM fbo Sauk Valley CC 403b Plan01 | | | Accounts Payable | Foundation | 35.00 |
| Baker, Sandra | 01 | | Accounts Payable | Online Refund | 198.00 |
| Bahrens, Cody | 01 | | Accounts Payable | Online Refund | 396.00 |
| Blessman, Joseph | 01 | | Accounts Payable | Online Refund | |

REPORT SVRCHKR
FISCAL YEAR 2012

Sauk Valley Community College
Check Register
From 05/17/12 To 06/25/12

RUN DATE: 06/16/12
TIME: 12:09 PM
PAGE: 7

| <u>PAYEE/VENDOR</u> | <u>FUND</u> | <u>ORGANIZATION</u> | <u>ACCOUNT</u> | <u>COMMODITY</u> | <u>ITEM AMOUNT</u> |
|------------------------------------|-------------|----------------------------------|---------------------------------|------------------------------|--------------------|
| Smith, Matthew | 01 | Art | Consultants | Art Class 6/6/12 | 160.00 |
| Follett Bookstore | 01 | Art | Instructional Supplies | Department Bookstore Charges | 15.48 |
| Follett Bookstore | 01 | Art | Instructional Supplies | Department Bookstore Charges | 16.24 |
| Fifth Third Bank | 01 | Art | Other Conference & Meeting | Milwaukee Art Museum | 140.00 |
| Follett Bookstore | 01 | English | Instructional Supplies | Department Bookstore Charges | 1.58 |
| Follett Bookstore | 01 | English | Instructional Supplies | Department Bookstore Charges | 54.87 |
| Pinney Printing Company | 01 | English | Instructional Supplies | The Works Perfect Booklet | 1,850.00 |
| MSB Hospital | 01 | Physical Education | Instructional Service Contracts | FED 213 | 1,182.00 |
| American Red Cross | 01 | Physical Education | Instructional Supplies | First Aid/CPR Cards | 567.00 |
| Professional Fitness Concepts, 101 | 01 | Fitness Center | Maintenance Services | Service Call | 1,648.50 |
| Follett Bookstore | 01 | Fitness Center | Instructional Supplies | Department Bookstore Charges | 7.49 |
| Follett Bookstore | 01 | Fitness Center | Instructional Supplies | Department Bookstore Charges | 1.43 |
| Mandrell, Jonathan | 01 | Criminal Justice | Conference/Meeting Expense | Travel-HCC for CJS Classes | 77.70 |
| Follett Bookstore | 01 | Psychology | Instructional Supplies | Department Bookstore Charges | 38.87 |
| Eichman, Amanda | 01 | Education | Conference/Meeting Expense | Travel-5/31 & 6/6/12 | 282.50 |
| Conderman, Carrie | 01 | Mathematics | Instructional Supplies | Supplies | 38.40 |
| Baldwin Cooke Company | 01 | Dean of Instruction | Office Supplies | 2013 Calendar Refill | 15.08 |
| Consolidated Management Co | 01 | Dean of Instruction | Conference/Meeting Expense | Lunch-Perkins Audit | 125.20 |
| Higher Learning Commission | 01 | Dean of Instruction | Conference/Meeting Expense | HLC Conference Registration | 265.00 |
| Creative Printing | 01 | Business | Instructional Supplies | Business Cards | 22.50 |
| Creative Printing | 01 | Computer Information Systems | Instructional Supplies | Business Cards | 22.50 |
| Xerox Corporation | 01 | Office & Administrative Services | Instructional Supplies | Xerox Meter Usage | 48.07 |
| Follett Bookstore | 01 | Electronics | Instructional Supplies | Department Bookstore Charges | 106.00 |
| MSC Industrial Supply Company | 01 | Welding | Instructional Supplies | Supplies | 921.70 |
| Rockford Industrial Welding Suppl | | Welding | Instructional Supplies | Alum Wire | 255.50 |
| Rockford Industrial Welding Suppl | | Welding | Instructional Supplies | Contact Tape | 173.95 |

REPORT SVCRKR
FISCAL YEAR 2012

Sauk Valley Community College
Check Register
From 05/17/12 To 06/25/12

RUN DATE: 06/16/12
TIME: 12:09 PM
PAGE: 9

| <u>PAYEE/VENDOR</u> | <u>FUND</u> | <u>ORGANIZATION</u> | <u>ACCOUNT</u> | <u>COMMODITY</u> | <u>ITEM AMOUNT</u> |
|--------------------------------|-------------|--------------------------|----------------------------------|------------------------------------|--------------------|
| Secretary of State | 01 | Fire Science Program | Office Supplies | Title Transfer 1978 Chev C65 | 95.00 |
| Secretary of State | 01 | Fire Science Program | Office Supplies | Title Transfer 1982 | 95.00 |
| Creative Printing | 01 | Fire Science Program | Instructional Supplies | Business Cards | 40.00 |
| Carolina Biological Supply Co | 01 | Biology | Instructional Supplies | Protozoa & Brine Shrimp | 114.26 |
| Film Scientific | 01 | Chemistry | Instructional Supplies | Ring Stand Support | 790.47 |
| S J Smith Welding Supply | 01 | Chemistry | Instructional Supplies | Gases for Chemistry | 10.44 |
| Siemens Industry Inc | 01 | Chemistry | Instructional Supplies | DI Water for Chemistry | 285.00 |
| Creative Printing | 01 | Learning Resource Center | Library Supplies | Business Cards | 35.00 |
| Fifth Third Bank | 01 | Learning Resource Center | Library Supplies | Staples Gaylord | 507.58 |
| Follett Bookstore | 01 | Learning Resource Center | Library Supplies | Department Bookstore Charges | 2.07 |
| Amazon.com | 01 | Learning Resource Center | Books and Binding Costs | Books for Library | 2,563.25 |
| EBSCO | 01 | Learning Resource Center | Books and Binding Costs | Books for Library | 4,990.21 |
| Fifth Third Bank | 01 | Learning Resource Center | Books and Binding Costs | Books | 11.95 |
| Gale Group | 01 | Learning Resource Center | Books and Binding Costs | Incl Dir Co Hist V 135 | 304.33 |
| Fifth Third Bank | 01 | Learning Resource Center | Publications and Dues | Wall Street Journal | 102.35 |
| Fifth Third Bank | 01 | Academic Computing | Instructional Supplies | Amazon.com | 749.95 |
| AVI Systems Inc | 01 | Academic Computing | Instructional Technology Materia | Replacement lamps | 417.73 |
| CDM-G | 01 | Academic Computing | Instructional Technology Materia | Emegizer Battery | 358.72 |
| Shelley, Chris | 01 | Academic Computing | Instructional Technology Materia | IT Supplies | 46.07 |
| Staples | 01 | Academic Computing | Instructional Technology Materia | Office Supplies | 120.95 |
| Arthur's Garden Deli | 01 | Academic Computing | Conference/Meeting Expense | Food Moodle Boot Camp | 33.75 |
| Fisch, Robin | 01 | Academic Computing | Conference/Meeting Expense | Food Moodle Boot Camp | 29.29 |
| Fisch, Robin | 01 | Academic Computing | Conference/Meeting Expense | Travel-FSI Conference | 284.16 |
| Noack, Gregory | 01 | Academic Computing | Conference/Meeting Expense | Travel-Urbana IL Faculty Institute | 393.21 |
| Strata Information Group (SIG) | 01 | Administrative Computing | Consultants | Consultant | 400.00 |
| Fifth Third Bank | 01 | Administrative Computing | Office Supplies | Survey Monkey | 24.00 |

REPORT SVCHKR
FISCAL YEAR 2012

Sauk Valley Community College
Check Register
From 05/17/12 To 06/25/12

RUN DATE: 06/18/12
TIME: 12:09 PM
PAGE: 11

| <u>PAYEE/VENDOR</u> | <u>FUND</u> | <u>ORGANIZATION</u> | <u>ACCOUNT</u> | <u>COMMODITY</u> | <u>ITEM AMOUNT</u> |
|---------------------------------|-------------|----------------------------------|----------------------------|--|--------------------|
| Xerox Corporation | 01 | Financial Aid & Veterans Affairs | Maintenance Services | Copier-Maint & Sply | 67.43 |
| Follett Bookstore | 01 | Financial Aid & Veterans Affairs | Office Supplies | Department Bookstore Charges | 133.22 |
| Xerox Corporation | 01 | Counseling | Maintenance Services | Copier-Maint & Sply | 67.43 |
| 4 Imprint Inc. | 01 | Counseling | Office Supplies | Javelin Pen | 561.67 |
| Creative Printing | 01 | Counseling | Office Supplies | Business Cards | 40.00 |
| American Counseling Association | 01 | Counseling | Publications and Dues | FY 12 Dues | 161.00 |
| NACADA | 01 | Counseling | Publications and Dues | FY 12 Dues | 225.00 |
| Breed, Thomas | 01 | Counseling | Conference/Meeting Expense | Travel - Area HS Registrations | 106.01 |
| Kern-Lyons, Valerie | 01 | Counseling | Conference/Meeting Expense | Travel - Area HS Registration | 24.84 |
| Johnson, Jeddiah | 01 | Other Institutional | Tuition Reimbursement | Tuition Reimbursement Fall 2011 & Spr 2012 | 1,150.00 |
| Federal Express Corp | 01 | Other Institutional | Postage | Shipping Charges | 219.07 |
| Fifth Third Bank | 01 | Other Institutional | Postage | Pitney Bowes | 193.48 |
| Pitney Bowes | 01 | Other Institutional | Postage | Equipment Charge | 259.00 |
| Pitney Bowes | 01 | Other Institutional | Postage | Postage Meter Refill | 12,000.00 |
| United Parcel Service | 01 | Other Institutional | Postage | UPS Charges | 119.80 |
| United Parcel Service | 01 | Other Institutional | Postage | Shipping | 150.78 |
| Arthur's Garden Deli | 01 | Other Institutional | Conference/Meeting Expense | May 23rd Presentation | 244.50 |
| CGH Medical Center | 01 | Other Institutional | Conference/Meeting Expense | Schoend for 5/23/12 for Sheila Brune | 150.00 |
| Culver's | 01 | Other Institutional | Conference/Meeting Expense | Custard Bar for Presentation | 148.05 |
| Fifth Third Bank | 01 | Other Institutional | Other Conference & Meeting | NAAC Conference & Lodging | 2,461.75 |
| Xerox Corporation | 01 | Contingency | Interest | Copier Lease Payment-Interest | 194.04 |
| Acom Solutions, Inc | 01 | Business Office | Maintenance Services | Software Maintenance | 1,984.00 |
| Xerox Corporation | 01 | Business Office | Maintenance Services | Copier-Maint & Sply | 67.44 |
| Baldwin Cooke Company | 01 | Business Office | Office Supplies | 2013 Calendar Refill | 30.16 |
| Staples | 01 | Business Office | Office Supplies | Office Supplies | 3.23 |
| Breed, Nancy | 01 | Business Office | Conference/Meeting Expense | Travel-TIF MTG & ICCRMC | 124.14 |

REPORT SVCRKR
FISCAL YEAR 2012

Sauk Valley Community College
Check Register
From 05/17/12 To 06/25/12

RUN DATE: 06/18/12
TIME: 12:09 PM
PAGE: 13

| <u>PAYEE/VENDOR</u> | <u>FUND</u> | <u>ORGANIZATION</u> | <u>ACCOUNT</u> | <u>COMMODITY</u> | <u>ITEM AMOUNT</u> |
|-----------------------------------|-------------|---------------------|----------------------|--------------------------|--------------------|
| H-O-H Water Technology Inc | 02 | Maintenance | Maintenance Services | Water Treatment | 801.20 |
| Illinois Environmental Protection | 02 | Maintenance | Maintenance Services | Annual Air Pollution Fee | 235.00 |
| Most Plumbing & Mechanical LLC | 02 | Maintenance | Maintenance Services | Work On Septic Tank | 1,824.69 |
| Plunkett's Pest Control | 02 | Maintenance | Maintenance Services | Pest Control Services | 200.00 |
| Schumacher Elevator Company | 02 | Maintenance | Maintenance Services | Maintenance | 1,600.56 |
| Crescent Electric Supply Co | 02 | Maintenance | Maintenance Supplies | Fan Speed Control | 43.91 |
| Dixon Glass Company | 02 | Maintenance | Maintenance Supplies | Repair Glass in Gym | 1,015.00 |
| Faustal Company | 02 | Maintenance | Maintenance Supplies | Maintenance Supplies | 385.08 |
| Granger | 02 | Maintenance | Maintenance Supplies | Fuses | 290.15 |
| Granger | 02 | Maintenance | Maintenance Supplies | Fan Control | 56.76 |
| Granger | 02 | Maintenance | Maintenance Supplies | Ballast | 748.00 |
| Menards | 02 | Maintenance | Maintenance Supplies | Maintenance Supplies | 13.88 |
| Menards | 02 | Maintenance | Maintenance Supplies | Masonry Bits | 19.54 |
| Menards | 02 | Maintenance | Maintenance Supplies | Masonry Bits | 25.31 |
| Menards | 02 | Maintenance | Maintenance Supplies | Maintenance Supplies | 202.74 |
| Menards | 02 | Maintenance | Maintenance Supplies | Maintenance Supplies | 77.29 |
| Menards | 02 | Maintenance | Maintenance Supplies | Aluminum & Plywood | 247.92 |
| Napa Auto Parts | 02 | Maintenance | Maintenance Supplies | Fittings | 9.04 |
| North's Oil Company, Inc | 02 | Maintenance | Maintenance Supplies | Gas Nozzle Replacement | 1,212.31 |
| Quality Ready-Mix Concrete | 02 | Maintenance | Maintenance Supplies | White Road Rock | 215.40 |
| Sherwin-Williams | 02 | Maintenance | Maintenance Supplies | Paint | 193.74 |
| Aramark Uniform Services Inc | 02 | Custodial | Maintenance Services | Towel Service | 82.13 |
| Aramark Uniform Services Inc | 02 | Custodial | Maintenance Services | Towel Service | 101.37 |
| Aramark Uniform Services Inc | 02 | Custodial | Maintenance Services | Towel Service | 99.15 |
| Jeff's Automotive | 02 | Custodial | Maintenance Services | U Joints Ford F 350 | 146.17 |
| Ace Hardware | 02 | Custodial | Maintenance Supplies | Propane Tanks | 33.98 |

REPORT SVRCHKR
FISCAL YEAR 2012

Sauk Valley Community College
Check Register
From 05/17/12 to 06/25/12

RUN DATE: 06/18/12
TIME: 12:09 PM
PAGE: 15

| NAME/VENDOR | FUND | ORGANIZATION | ACCOUNT | COMMODITY | ITEM AMOUNT |
|--|--------|----------------------------------|------------------------------|---------------------------------|-------------|
| Moring Disposal Inc | 02 | Utilities | Refuse Disposal | Monthly Service | 251.00 |
| Creative Printing | 02 | Building and Grounds Administrat | Office Supplies | Business Cards | 75.00 |
| Quill Corporation | 02 | Building and Grounds Administrat | Office Supplies | Office Supplies | 50.06 |
| Quill Corporation | 02 | Building and Grounds Administrat | Office Supplies | Office Supplies | 306.33 |
| Lance's Refrigeration Inc | 02 | Cafeteria | Maintenance Services | Repairs on Freezer | 139.00 |
| Xerox Corporation | 030200 | | Other Noncurrent Obligations | Copier Lease Payment -Principal | 319.59 |
| Fitch Third Bank | 030200 | Fund Bond- Instruc & Computer | Capital Supplies | Liebovich Steel | 3,018.74 |
| Hampden Engineering | 030200 | Fund Bond- Instruc & Computer | Instructional Equipment | Power Supply | 8,645.00 |
| Porter Pipe & Supply Co | 030200 | Fund Bond- Instruc & Computer | Instructional Equipment | HVAC Supplies | 5,165.95 |
| Fitch Third Bank | 030200 | Fund Bond- Facilities | Capital Supplies | Farm & Fleet | 499.00 |
| Granger | 030200 | Fund Bond- Facilities | Capital Supplies | Bottle Filling Station | 950.00 |
| Johnson Upholstery | 030200 | Fund Bond- Furniture & Office | Capital Supplies | Reupholster Sofa & Chairs | 926.00 |
| Johnson Upholstery | 030200 | Fund Bond- Furniture & Office | Capital Supplies | Reupholster & Repair Furniture | 1,868.45 |
| SEM Business Equipment Center | 030200 | Fund Bond- Furniture & Office | Capital Supplies | Desks | 2,642.70 |
| Fitch Third Bank | 030200 | Fund Bond- Furniture & Office | Capital Supplies | Mono Machines/Amazon.com | 1,455.51 |
| Frank Cooney Company | 030200 | Fund Bond- Furniture & Office | Capital Supplies | Fleetwood Welded Frame | 3,892.50 |
| Johnson Upholstery | 030200 | Fund Bond- Furniture & Office | Capital Supplies | Reupholster Sofa & Chairs | 792.50 |
| Krueger International, Inc (KI | 030200 | Fund Bond- Furniture & Office | Capital Supplies | Task Chairs | 3,243.00 |
| Menards | 030200 | Fund Bond- Other | Building Remodeling | Fire Science Supplies | 860.57 |
| Menards | 030200 | Fund Bond- Other | Building Remodeling | Steel | 569.64 |
| Consolidated Management Co | 050600 | Men's Basketball | Other Supplies | Muffins | 8.75 |
| Consolidated Management Co | 050600 | Men's Basketball | Other Supplies | Muffins | 20.00 |
| Illini Trophy | 050600 | Men's Basketball | Other Supplies | Basketball Banquet | 165.00 |
| Illinois Basketball Services (IB050600 | | Men's Basketball | Other Supplies | FY 12 Recruiting Service | 75.00 |
| Follett Bookstore | 050600 | Golf | Other Supplies | Department Bookstore Charges | 1.96 |
| Williams, David | 050600 | Golf | Other Supplies | Golf Balls | 339.00 |

REPORT SVRCHKR
FISCAL YEAR 2012

Sauk Valley Community College
Check Register
From 05/17/12 To 06/25/12

RUN DATE: 06/18/12
TIME: 12:09 PM
PAGE: 17

| <u>PAYEE/VENDOR</u> | <u>FUND</u> | <u>ORGANIZATION</u> | <u>ACCOUNT</u> | <u>COMMODITY</u> | <u>ITEM AMOUNT</u> |
|---------------------------------|-------------|----------------------------------|----------------------------|---|--------------------|
| Gallagher Benefit Services, Inc | 051000 | Medical Insurance | Life & AD&D | Life Billing | 973.84 |
| Gallagher Benefit Services, Inc | 051000 | Medical Insurance | Life & AD&D | Life Billing | 985.32 |
| Atlano, Jose | 051400 | Student Loans | Student Loans | Student Loan Due 6/28/12 | 69.34 |
| Fifth Third Bank | 062051 | Student Leadership Academy | Office Supplies | Custom Monogram | 826.10 |
| Fifth Third Bank | 062051 | Student Leadership Academy | Conference/Meeting Expense | Mama Cimino's/Wal-Mart | 220.90 |
| Fifth Third Bank | 062051 | Women in Criminal Justice | Instructional Supplies | Wal-Mart/Staples | 116.86 |
| Fifth Third Bank | 062051 | Women in Criminal Justice | Conference/Meeting Expense | Angelo's | 140.60 |
| Anderson, Erika | 062056 | ICCB Adult Ed-Federal Basic | Instructional Supplies | Citizenship Workshop Supplies | 14.92 |
| Anderson, Erika | 062056 | ICCB Adult Ed-Federal Basic | Instructional Supplies | CD Players | 154.70 |
| Anderson, Erika | 062056 | ICCB Adult Ed-Federal Basic | Instructional Supplies | Workbooks & Skillbooks | 825.41 |
| New Readers Press | 062056 | ICCB Adult Ed-Federal Basic | Instructional Supplies | My Foundation Labs | 10,050.00 |
| Pearson Education | 062056 | ICCB Adult Ed-Federal Basic | Instructional Supplies | Office Supplies | 253.09 |
| Staples | 062056 | ICCB Adult Ed-Federal Basic | Instructional Supplies | Tassell's | 304.69 |
| Tassell Depot | 062056 | ICCB Adult Ed-Federal Basic | Instructional Supplies | Citizenship Lunch & Water | 53.79 |
| Anderson, Erika | 062056 | ICCB Adult Ed-Federal Basic | Other | Copier Charges | 123.98 |
| SBM Business Equipment Center | 062057 | ICCB Adult Ed-Public Aid -Instru | Instructional Supplies | Supplies for ESL Graduation | 54.92 |
| Anderson, Erika | 062057 | ICCB Adult Ed-Public Aid -Instru | Conference/Meeting Expense | Supplies for Citizenship Meeting | 17.27 |
| Anderson, Erika | 062057 | ICCB Adult Ed-Public Aid -Instru | Conference/Meeting Expense | AFC Meeting | 60.97 |
| Consolidated Management Co | 062057 | ICCB Adult Ed-Public Aid -Instru | Conference/Meeting Expense | Workforce Mentoring | 78.82 |
| Consolidated Management Co | 062057 | ICCB Adult Ed-Public Aid -Instru | Conference/Meeting Expense | GED Graduation | 70.20 |
| Consolidated Management Co | 062057 | ICCB Adult Ed-Public Aid -Instru | Conference/Meeting Expense | Travel-Conference Adult Learning Center | 119.88 |
| Hughes, Kathleen | 062057 | ICCB Adult Ed-Public Aid -Instru | Other | Gift Cards | 900.00 |
| Johnson Oil Company | 062057 | ICCB Adult Ed-Public Aid -Instru | Instructional Supplies | GED Math Skills | 44.53 |
| Houghton Mifflin Harcourt | 062058 | ICCB Adult Ed-State Basic-Instru | Instructional Supplies | GED Books | 308.36 |
| Houghton Mifflin Harcourt | 062058 | ICCB Adult Ed-State Basic-Instru | Instructional Supplies | GED Books | 5,358.46 |
| Anderson, Erika | 062058 | ICCB Adult Ed-State Basic-Instru | Conference/Meeting Expense | Travel-Citizenship Open House | 110.34 |

REPORT SVRCHKR
FISCAL YEAR 2012

Sauk Valley Community College
Check Register
From 05/17/12 To 06/25/12

RUN DATE: 06/18/12
TIME: 12:09 PM
PAGE: 19

| PAVEE/VENDOR | FUND | ORGANIZATION | ACCOUNT | COMMODITY | ITEM AMOUNT |
|--|--------|-----------------------------------|----------------------------|---------------------------------------|-------------|
| Accurate Biometrics, Inc | 063075 | IDHS AmeriCorps - Member Activit | Other Contractual Services | Member Background Checks | 180.00 |
| Accurate Biometrics, Inc | 063075 | IDHS AmeriCorps - Member Activit | Other Contractual Services | Member Background Check | 360.00 |
| Downtown Sports | 063075 | IDHS AmeriCorps - Member Activit | Office Supplies | Summer Member Shifts | 62.42 |
| Good Deed Organization | 063075 | IDHS AmeriCorps - Member Activit | Office Supplies | Member Uniforms | 347.41 |
| Dolan, Katrina | 063075 | IDHS AmeriCorps - Member Activit | Conference/Meeting Expense | Lunch Summer Orientation | 86.45 |
| Andersen, Kirsten | 063075 | IDHS AmeriCorps - Member Activit | Other Conference & Meeting | Travel-AmeriCorp Orientation | 44.95 |
| Clark, Latrice | 063075 | IDHS AmeriCorps - Member Activit | Other Conference & Meeting | Travel- Retreat | 74.37 |
| Nelson, Natalie | 063075 | IDHS AmeriCorps - Member Activit | Other Conference & Meeting | Travel-AmeriCorp Orientation | 83.25 |
| Scarborough, Zachary | 063075 | IDHS AmeriCorps - Member Activit | Other Conference & Meeting | Travel-Orientat | 59.38 |
| Siebert, Sarah | 063075 | IDHS AmeriCorps - Member Activit | Other Conference & Meeting | Travel- Meeting | 62.16 |
| Slusser, Mary Ann | 063075 | IDHS AmeriCorps - Member Activit | Other Conference & Meeting | Travel-Retreat | 68.82 |
| Sterling High School | 063075 | IDHS AmeriCorps - Member Activit | Other Conference & Meeting | Field Trip Cost 5/23/12 | 75.00 |
| Creative Cuisine | 063075 | IDHS AmeriCorps - Member Activit | Other | Meal for Member Graduation | 772.50 |
| Dolan, Katrina | 063075 | IDHS AmeriCorps - Member Activit | Other | Award Prizes | 7.54 |
| Dolan, Katrina | 063075 | IDHS AmeriCorps - Member Activit | Other | Graduation Supplies | 188.26 |
| Flowers Etc of Dixon Inc | 063075 | IDHS AmeriCorps - Member Activit | Other | Flowers for Graduation | 100.00 |
| Hyron Corp | 063075 | IDHS AmeriCorps - Member Activit | Other | Member Awards | 124.34 |
| Oriental Trading Company | 063075 | IDHS AmeriCorps - Member Activit | Other | Graduation Supplies | 307.40 |
| Sauk Valley Media | 063075 | IDHS AmeriCorps - Member Activit | Other | AmeriCorp Ad Recruitment | 574.25 |
| State Universities Retirement SY063075 | 063075 | IDHS AmeriCorps - Nonmember Activ | SUNS | Matching Funds | 279.77 |
| State Universities Retirement SY063075 | 063075 | IDHS AmeriCorps - Nonmember Activ | SUNS | Matching Funds | 260.96 |
| Fifth Third Bank | 063075 | IDHS AmeriCorps - Nonmember Activ | Office Supplies | Camelback Displays | 170.86 |
| RK Dixon | 063075 | IDHS AmeriCorps - Nonmember Activ | Office Supplies | Printer Copies | 438.21 |
| Staples | 063075 | IDHS AmeriCorps - Nonmember Activ | Office Supplies | Office Supplies | 934.92 |
| Hyatt Regency | 063075 | IDHS AmeriCorps - Nonmember Activ | Other Conference & Meeting | Accomodations Natl Conference Chicago | 398.06 |
| Peck, Lisa | 063075 | IDHS AmeriCorps - Nonmember Activ | Other Conference & Meeting | Travel-Area Site Visits | 72.26 |

| <u>PAYEE/VENDOR</u> | <u>FUND</u> | <u>ORGANIZATION</u> | <u>ACCOUNT</u> | <u>COMMODITY</u> | <u>ITEM AMOUNT</u> |
|---------------------------------|-------------|----------------------------------|----------------------------|--------------------------------------|--------------------|
| Dolan, Katrina | 063075 | IDHS AmeriCorps- Nonmember Activ | Other | Water | 3.74 |
| Shuler, Nancy | 064010 | Online Nursing Program | Conference/Meeting Expense | Travel-Area Clinical Site Visits | 635.59 |
| Shuler, Nancy | 064010 | Online Nursing Program | Conference/Meeting Expense | Travel-NLN Conference | 263.98 |
| Quill Corporation | 064060 | VITAL Donation Grant | Office Supplies | Note Books | 129.90 |
| Follett Bookstore | 101060 | Magic Club | Other | Department Bookstore Charges | 2.00 |
| Hamilton, Jane | 101060 | Magic Club | Other | Magic Club Purchases for Draft Party | 166.08 |
| Gallentine, Lyndsey | 101080 | Rad Tech Senior | Other | Services for Pinning | 30.00 |
| Mama Cimino's | 101080 | Rad Tech Senior | Other | Rad Tech Class Party | 167.60 |
| Nunez, Steven | 101140 | Phi Theta Kappa Club | Other | PTK Membership & Armstrong | 60.00 |
| Sterling Rock Falls Family YMCA | 101272 | Criminal Justice Club | Other | Donation | 100.00 |
| McCladrey & Pullen LLP | 11 | Audit | Audit Services | First Billing for 2012 Audit | 6,500.00 |
| American DataBank LLC | 12 | Risk Management | Consultants | Staff Background Checks | 200.00 |
| Travelers Companies Inc | 12 | Risk Management | General Insurance | Builders Risk Policy for Science Lab | 3,231.00 |
| CenturyLink | 12 | Risk Management | Telephone | 911 Cama Trunk Lines | 90.52 |
| Verizon Wireless | 12 | Public Safety | Maintenance Services | Security Cell Phones | 85.53 |
| Stewart & Associates Inc | 12 | Public Safety | Other Contractual Services | Contract Security | 783.00 |
| Stewart & Associates Inc | 12 | Public Safety | Other Contractual Services | Security Contract | 904.50 |
| Fyr-Fyter Inc | 12 | Public Safety | Other Supplies | Fire Extinguishers | 358.69 |
| Radio Ranch Inc | 12 | Public Safety | Other Supplies | Security Radio | 275.00 |

BANK ACCOUNT 1 TOTAL:

456,466.10

ALL ACCOUNTS TOTAL:

456,466.10

SAUK VALLEY COMMUNITY COLLEGE
REVENUES, EXPENDITURES, AND TRANSFERS
AS OF MAY 31

| EDUCATION FUND | 2011-2012 YTD | 2011-2012 Budget | YTD / Budget % | 2010-2011 YTD | YTD % Chng fm Prev Yr | 2010-2011 Total |
|--------------------------------|------------------|---------------------|-------------------|------------------|--------------------------|--------------------|
| Revenues | | | | | | |
| Local Governmental Sources | 1,889,180 | 3,825,000 | 49.3% | 1,846,259 | 2.3% | 3,740,138 |
| State Governmental Sources | 2,116,700 | 2,893,180 | 73.1% | 1,999,971 | 5.8% | 2,954,241 |
| Federal Governmental Sources | 8,375 | 7,000 | 119.6% | 6,423 | 30.3% | 6,423 |
| Student Tuition and Fees | 6,680,158 | 5,065,000 | 131.8% | 7,113,863 | -6.1% | 5,182,840 |
| Sales and Service | 95,562 | 200,000 | 47.8% | 129,335 | -26.0% | 134,218 |
| Investment Revenue | 11,286 | 40,000 | 28.2% | 39,488 | -71.4% | 26,263 |
| Other Revenues | 11,928 | 515,000 | 2.3% | 26,297 | -54.6% | 1,400,592 |
| TOTALS | 10,813,292 | 12,545,180 | 86.1% | 11,161,638 | -3.1% | 13,444,716 |
| Expenditures | | | | | | |
| Salaries | 5,796,620 | 7,022,875 | 82.5% | 6,122,003 | -5.3% | 6,670,899 |
| Employee Benefits | 1,585,719 | 2,212,648 | 71.6% | 1,524,127 | 4.0% | 2,981,637 |
| Contractual Services | 452,334 | 613,515 | 73.7% | 413,493 | 9.3% | 476,130 |
| General Materials and Supplies | 561,992 | 885,687 | 74.7% | 693,303 | -4.5% | 828,703 |
| Conference & Meeting | 121,627 | 185,995 | 65.3% | 92,619 | 31.3% | 103,800 |
| Fixed Charges | 1,654 | | | | 0.0% | |
| Capital Outlay | 939,774 | 930,000 | 101.0% | 1,015,479 | -7.4% | 5,300 |
| Other Expenditures | | | | | | 980,716 |
| TOTALS | 9,559,723 | 11,850,720 | 80.6% | 9,861,026 | -3.0% | 12,047,187 |
| Transfers | | | | | | |
| Transfers to Other Funds | | 110,000 | | | | 40,000 |
| CHANGE IN NET ASSETS | 1,253,568 | 584,460 | | 1,300,611 | | 1,357,529 |
| FUND BALANCE | 5,757,776 | | | | | 4,504,208 |

06/18/2012

SAUK VALLEY COMMUNITY COLLEGE
REVENUES, EXPENDITURES, AND TRANSFERS
AS OF MAY 31

Page 3

| OPERATION & MAINTENANCE - RESTRICTED | 2011-2012 YTD | 2011-2012 Budget | YTD / Budget % | 2010-2011 YTD | YTD % Chng fm Prev Yr | 2010-2011 Total |
|--------------------------------------|------------------|---------------------|-------------------|------------------|--------------------------|--------------------|
| Revenues | | | | | | |
| Local Governmental Sources | 385,828 | 775,000 | 49.7% | 14,075,522 | -97.2% | 14,462,028 |
| Investment Revenue | 16,640 | 5,000 | 332.8% | 17,307 | -3.8% | 64,875 |
| Other Revenues | 32,987 | 30,000 | 109.9% | 44,464 | -25.8% | 44,464 |
| TOTALS | 435,456 | 810,000 | 53.7% | 14,137,294 | -96.9% | 14,571,368 |
| Expenditures | | | | | | |
| Salaries | 5,114 | | | 990 | 416.5% | 3,960 |
| Contractual Services | -26,566 | | | 29,524 | -189.9% | 237,236 |
| General Materials and Supplies | 107,235 | 321,250 | 33.3% | 105,297 | 1.8% | 160,304 |
| Fixed Charges | | | | 6,912,955 | 546.1% | 6,912,955 |
| Capital Outlay | 3,958,340 | 5,085,000 | 77.8% | 612,648 | | 736,508 |
| TOTALS | 4,044,123 | 5,406,250 | 74.8% | 7,661,415 | -47.2% | 8,050,965 |
| CHANGE IN NET ASSETS | -3,608,666 | -4,596,250 | | 6,475,878 | | 6,520,403 |
| FUND BALANCE | 6,863,488 | | | | | 10,472,155 |

06/18/2012

SAUK VALLEY COMMUNITY COLLEGE
REVENUES, EXPENDITURES, AND TRANSFERS
AS OF MAY 31

Page 5

AUXILIARY ENTERPRISES FUND

Revenues

| | 2011-2012 YTD | 2011-2012 Budget | YTD / Budget % | 2010-2011 YTD | YTD % Chng fm Prev Yr | 2010-2011 Total |
|--------------------------|------------------|---------------------|-------------------|------------------|--------------------------|--------------------|
| Student Tuition and Fees | 359,315 | 265,000 | 135.5% | 389,677 | -7.7% | 283,347 |
| Sales and Service | 48,352 | 58,000 | 83.3% | 41,083 | 17.6% | 44,884 |
| Facilities Revenue | 97,573 | 110,000 | 88.7% | 107,558 | -9.2% | 117,515 |
| Investment Revenue | 1,935 | 2,000 | 96.7% | 2,074 | -6.7% | 2,135 |
| Other Revenues | 2,090,712 | 2,186,000 | 95.6% | 1,976,207 | 5.7% | 2,164,477 |
| TOTALS | 2,597,889 | 2,621,000 | 99.1% | 2,516,602 | 3.2% | 2,612,360 |

Expenditures

| | | | | | | |
|--------------------------------|-----------|-----------|-------|-----------|---------|-----------|
| Salaries | 120,465 | 142,934 | 84.2% | 121,434 | -.8% | 127,369 |
| Employee Benefits | 14,450 | 16,901 | 85.5% | 17,541 | -17.6% | 45,082 |
| Contractual Services | 2,096,715 | 2,249,174 | 93.2% | 1,925,417 | 8.9% | 2,037,216 |
| General Materials and Supplies | 61,366 | 71,990 | 85.2% | 52,172 | 17.6% | 61,045 |
| Conference & Meeting | 52,912 | 58,883 | 89.8% | 54,358 | -2.6% | 53,533 |
| Fixed Charges | 15,181 | 15,450 | 98.2% | 14,851 | 2.2% | 16,613 |
| Capital Outlay | 3,469 | | | -88 | 0.0% | -88 |
| Other Expenditures | 39 | | | -88 | -144.7% | -88 |
| TOTALS | 2,364,600 | 2,555,332 | 92.5% | 2,185,687 | 8.1% | 2,340,773 |

Transfers

| | | | | | | |
|----------------------------|--|----------|--|--|--|----------|
| Transfers to Other Funds | | 110,000 | | | | 100,000 |
| Transfers From Other Funds | | -100,000 | | | | -100,000 |

| | | | | | | |
|----------------------|-----------|--------|--|---------|--|-----------|
| CHANGE IN NET ASSETS | 233,288 | 55,668 | | 330,914 | | 271,587 |
| FUND BALANCE | 1,298,177 | | | | | 1,064,888 |

06/18/2012

SAUK VALLEY COMMUNITY COLLEGE
REVENUES, EXPENDITURES, AND TRANSFERS
AS OF MAY 31

Page 7

| WORKING CASH FUND | 2011-2012 YTD | 2011-2012 Budget | YTD / Budget % | 2010-2011 YTD | YTD % Chang fm Prev Yr | 2010-2011 Total |
|----------------------------|------------------|---------------------|-------------------|------------------|---------------------------|--------------------|
| Revenues | | | | | | |
| Local Governmental Sources | | | | 510,000 | | 510,000 |
| Investment Revenue | 3,374 | 30,000 | 11.2% | 25,251 | -86.6% | 9,531 |
| TOTALS | 3,374 | 30,000 | 11.2% | 535,251 | -99.3% | 519,531 |
| Expenditures | | | | | | |
| Investment Revenue | | | | | | |
| TOTALS | | | | | | |
| Transfers | | | | | | |
| Transfers to Other Funds | | 30,000 | | | | |
| CHANGE IN NET ASSETS | 3,374 | | | 535,251 | | 519,531 |
| FUND BALANCE | 2,493,689 | | | | | 2,490,315 |

06/18/2012

SAUK VALLEY COMMUNITY COLLEGE
REVENUES, EXPENDITURES, AND TRANSFERS
AS OF MAY 31

Page 9

| AUDIT FUND | 2011-2012 YTD | 2011-2012 Budget | YTD / Budget % | 2010-2011 YTD | YTD % Chng fm Prev Yr | 2010-2011 Total |
|----------------------------|------------------|---------------------|-------------------|------------------|--------------------------|--------------------|
| Revenues | | | | | | |
| Local Governmental Sources | 32,468 | 65,000 | 49.9% | 21,072 | 54.0% | 53,539 |
| Investment Revenue | 9 | 25 | 38.3% | 10 | -10.0% | 7 |
| TOTALS | 32,478 | 65,025 | 49.9% | 21,082 | 54.0% | 53,546 |
| Expenditures | | | | | | |
| Salaries | 7,809 | 8,361 | 93.4% | 5,389 | 44.9% | 6,085 |
| Employee Benefits | 2,908 | 3,253 | 89.4% | 1,449 | 100.6% | 1,711 |
| Contractual Services | 58,087 | 38,000 | 152.8% | 38,575 | 50.5% | 38,575 |
| TOTALS | 68,805 | 49,614 | 138.6% | 45,413 | 51.5% | 46,371 |
| CHANGE IN NET ASSETS | -36,327 | 15,411 | | -24,330 | | 7,174 |
| FUND BALANCE | -34,984 | | | | | 1,343 |

06/18/2012

SAUK VALLEY COMMUNITY COLLEGE
REVENUES, EXPENDITURES, AND TRANSFERS
AS OF MAY 31

Page 10

| LIABILITY, PROTECTION & SETTLEMENT | 2011-2012 YTD | 2011-2012 Budget | YTD / Budget % | 2010-2011 YTD | YTD % Chng fm Prev Yr | 2010-2011 Total |
|------------------------------------|------------------|---------------------|-------------------|------------------|--------------------------|--------------------|
| Revenues | | | | | | |
| Local Governmental Sources | 11 | | | | | |
| Investment Revenue | 56,954 | 151,100 | 37.6% | 178,863 | -99.9% | 178,863 |
| Other Revenues | | 20,000 | 0.0% | 50,688 | 12.3% | 92,955 |
| TOTALS | 56,966 | 171,100 | 33.2% | 229,551 | -75.1% | 309,268 |
| Expenditures | | | | | | |
| Salaries | 157,735 | 189,485 | 83.2% | 169,227 | -6.7% | 182,923 |
| Employee Benefits | 308,154 | 349,421 | 88.1% | 292,027 | 5.5% | 352,295 |
| Contractual Services | 34,584 | 40,100 | 86.2% | 31,355 | 10.3% | 54,975 |
| General Materials and Supplies | 6,708 | 13,100 | 51.2% | 6,809 | -1.4% | 7,902 |
| Conference & Meeting | 345 | 2,100 | 16.4% | 1,283 | -73.1% | 1,283 |
| Fixed Charges | 35,727 | 30,000 | 119.0% | 33,515 | 6.6% | 32,476 |
| Utilities | 905 | 1,500 | 60.3% | 903 | .1% | 1,085 |
| TOTALS | 544,161 | 625,706 | 86.9% | 535,121 | 1.6% | 632,942 |
| CHANGE IN NET ASSETS | -487,194 | -454,606 | | -305,570 | | -323,673 |
| FUND BALANCE | 5,656,436 | | | | | 6,143,631 |

Lee County Prevailing Wage for June 2012

(See explanation of column headings at bottom of wages)

| Trade Name Trng | RG | TYP | C | Base | FRMAN | *M-F>8 | OSA | OSH | H/W | Pensn | Vac |
|-------------------------------|----|-----|---|--------|--------|--------|-----|-----|-------|-------|-------|
| ===== | == | === | = | ===== | ===== | ===== | == | == | ===== | ===== | ===== |
| ASBESTOS ABT-GEN 0.800 | | BLD | | 29.400 | 30.400 | 1.5 | 1.5 | 2.0 | 8.040 | 12.02 | 0.000 |
| ASBESTOS ABT-MEC 0.520 | | BLD | | 31.540 | 0.000 | 1.5 | 1.5 | 2.0 | 9.670 | 9.610 | 0.000 |
| BOILERMAKER 0.300 | | BLD | | 35.010 | 38.010 | 2.0 | 2.0 | 2.0 | 7.070 | 13.83 | 0.000 |
| BRICK MASON 0.570 | | BLD | | 35.710 | 38.460 | 1.5 | 1.5 | 2.0 | 7.400 | 11.73 | 0.000 |
| CARPENTER 0.600 | | BLD | | 32.040 | 35.560 | 1.5 | 1.5 | 2.0 | 8.520 | 12.87 | 0.000 |
| CARPENTER 0.490 | | HWY | | 32.440 | 34.190 | 1.5 | 1.5 | 2.0 | 9.250 | 11.99 | 0.000 |
| CEMENT MASON 0.250 | | ALL | | 32.520 | 35.270 | 1.5 | 1.5 | 2.0 | 7.400 | 13.78 | 0.000 |
| CERAMIC TILE FNSHER 0.500 | | BLD | | 32.240 | 0.000 | 1.5 | 1.5 | 2.0 | 7.400 | 4.840 | 0.000 |
| COMMUNICATION TECH 0.720 | | BLD | | 36.000 | 39.600 | 1.5 | 1.5 | 2.0 | 9.740 | 11.20 | 0.000 |
| ELECTRIC PWR EQMT OP 0.270 | | ALL | | 35.400 | 48.110 | 1.5 | 1.5 | 2.0 | 5.000 | 10.97 | 0.000 |
| ELECTRIC PWR GRNDMAN 0.210 | | ALL | | 27.380 | 48.110 | 1.5 | 1.5 | 2.0 | 5.000 | 8.490 | 0.000 |
| ELECTRIC PWR LINEMAN 0.320 | | ALL | | 42.390 | 48.110 | 1.5 | 1.5 | 2.0 | 5.000 | 13.14 | 0.000 |
| ELECTRIC PWR TRK DRV 0.220 | | ALL | | 28.350 | 48.110 | 1.5 | 1.5 | 2.0 | 5.000 | 8.790 | 0.000 |
| ELECTRICIAN 0.800 | | BLD | | 40.000 | 44.000 | 1.5 | 1.5 | 2.0 | 9.740 | 15.83 | 0.000 |
| ELEVATOR CONSTRUCTOR 0.000 | | BLD | | 44.940 | 50.560 | 2.0 | 2.0 | 2.0 | 11.03 | 11.96 | 2.760 |
| GLAZIER 1.250 | | BLD | | 30.770 | 32.770 | 1.5 | 1.5 | 2.0 | 9.700 | 7.700 | 0.000 |
| HT/FROST INSULATOR 0.720 | | BLD | | 43.800 | 46.300 | 1.5 | 1.5 | 2.0 | 10.82 | 11.86 | 0.000 |
| IRON WORKER 0.950 | N | ALL | | 35.000 | 36.750 | 2.0 | 2.0 | 2.0 | 8.000 | 19.59 | 0.000 |
| IRON WORKER 0.700 | S | ALL | | 37.000 | 38.000 | 2.0 | 2.0 | 2.0 | 8.890 | 18.20 | 0.000 |
| LABORER 0.800 | | BLD | | 29.400 | 30.400 | 1.5 | 1.5 | 2.0 | 8.040 | 12.02 | 0.000 |
| LABORER 0.800 | | HWY | | 30.100 | 30.850 | 1.5 | 1.5 | 2.0 | 8.040 | 12.02 | 0.000 |
| LABORER, SKILLED 0.800 | | HWY | | 32.250 | 33.000 | 1.5 | 1.5 | 2.0 | 8.040 | 12.02 | 0.000 |
| LATHER 0.600 | | BLD | | 32.040 | 35.560 | 1.5 | 1.5 | 2.0 | 8.520 | 12.87 | 0.000 |
| MACHINIST 0.000 | | BLD | | 43.160 | 45.160 | 1.5 | 1.5 | 2.0 | 7.980 | 8.950 | 0.000 |
| MARBLE FINISHERS 0.500 | | BLD | | 32.240 | 0.000 | 1.5 | 1.5 | 2.0 | 7.400 | 4.840 | 0.000 |

| | | | | | | | | | |
|-------------------------|---------|--------|--------|-----|-----|-----|-------|-------|-------|
| TERRAZZO MASON 0.540 | BLD | 35.090 | 35.340 | 1.5 | 1.5 | 2.0 | 7.400 | 6.980 | 0.000 |
| TILE LAYER 0.600 | BLD | 32.040 | 35.560 | 1.5 | 1.5 | 2.0 | 8.520 | 12.87 | 0.000 |
| TILE MASON 0.540 | BLD | 35.090 | 35.340 | 1.5 | 1.5 | 2.0 | 7.400 | 6.980 | 0.000 |
| TRUCK DRIVER 0.250 | O&C 1 | 24.280 | 0.000 | 1.5 | 1.5 | 2.0 | 10.05 | 4.610 | 0.000 |
| TRUCK DRIVER 0.250 | O&C 2 | 24.630 | 0.000 | 1.5 | 1.5 | 2.0 | 10.05 | 4.610 | 0.000 |
| TRUCK DRIVER 0.250 | O&C 3 | 24.790 | 0.000 | 1.5 | 1.5 | 2.0 | 10.05 | 4.610 | 0.000 |
| TRUCK DRIVER 0.250 | O&C 4 | 25.020 | 0.000 | 1.5 | 1.5 | 2.0 | 10.05 | 4.610 | 0.000 |
| TRUCK DRIVER 0.250 | O&C 5 | 25.670 | 0.000 | 1.5 | 1.5 | 2.0 | 10.05 | 4.610 | 0.000 |
| TRUCK DRIVER 0.000 | E ALL 1 | 32.550 | 33.100 | 1.5 | 1.5 | 2.0 | 6.500 | 4.350 | 0.000 |
| TRUCK DRIVER 0.000 | E ALL 2 | 32.700 | 33.100 | 1.5 | 1.5 | 2.0 | 6.500 | 4.350 | 0.000 |
| TRUCK DRIVER 0.000 | E ALL 3 | 32.900 | 33.100 | 1.5 | 1.5 | 2.0 | 6.500 | 4.350 | 0.000 |
| TRUCK DRIVER 0.000 | E ALL 4 | 33.100 | 33.100 | 1.5 | 1.5 | 2.0 | 6.500 | 4.350 | 0.000 |
| TRUCK DRIVER 0.250 | W ALL 1 | 30.350 | 0.000 | 1.5 | 1.5 | 2.0 | 10.05 | 4.610 | 0.000 |
| TRUCK DRIVER 0.250 | W ALL 2 | 30.790 | 0.000 | 1.5 | 1.5 | 2.0 | 10.05 | 4.610 | 0.000 |
| TRUCK DRIVER 0.250 | W ALL 3 | 30.990 | 0.000 | 1.5 | 1.5 | 2.0 | 10.05 | 4.610 | 0.000 |
| TRUCK DRIVER 0.250 | W ALL 4 | 31.270 | 0.000 | 1.5 | 1.5 | 2.0 | 10.05 | 4.610 | 0.000 |
| TRUCK DRIVER 0.250 | W ALL 5 | 32.090 | 0.000 | 1.5 | 1.5 | 2.0 | 10.05 | 4.610 | 0.000 |
| TUCKPOINTER 0.570 | BLD | 35.710 | 38.460 | 1.5 | 1.5 | 2.0 | 7.400 | 11.73 | 0.000 |

Legend: RG (Region)

TYP (Trade Type - All, Highway, Building, Floating, Oil & Chip, Rivers)

C (Class)

Base (Base Wage Rate)

FRMAN (Foreman Rate)

M-F>8 (OT required for any hour greater than 8 worked each day, Mon through Fri.)

OSA (Overtime (OT) is required for every hour worked on Saturday)

OSH (Overtime is required for every hour worked on Sunday and Holidays)

H/W (Health & Welfare Insurance)

Pensn (Pension)

Vac (Vacation)

Trng (Training)

SAUK VALLEY COMMUNITY COLLEGE, DIXON, ILLINOIS

RESOLUTION

ESTABLISHING PREVAILING WAGES

WHEREAS, Illinois Compiled Statutes, 820 ILCS 130/0.01-130/12, the Prevailing Wage Law, as amended, requires that the public body awarding any contract for construction of public works, exclusive of maintenance work, shall ascertain the general prevailing hourly rate of wages for employees engaged in such work; and

WHEREAS, the statutes further provide that said rate of pay be publicly posted and/or kept available for inspection by any interested party and certified copy thereof promptly filed in the Office of the Secretary of State;

NOW THEREFORE BE IT RESOLVED by the Board of Trustees of Sauk Valley Community College, Lee County, Illinois, to the extent as required by AN ACT regulating "wages of laborers, mechanics, and other workers employed in any public works by the State, county, city, or by any public body or political sub-division or by anyone under contract public works," as amended, the general prevailing rate of wages in this locality for laborers, mechanics and other workers engaged in the construction of public works coming under the jurisdiction of the Board of Trustees is hereby ascertained to be the same as the prevailing rate of wage for construction work in Lee County area as determined by the Department of Labor of the State of Illinois as of June 1, 2012; a copy of that determination being attached hereto and incorporated herein by reference. As required by said Act, any and all revisions of the prevailing rate of wages by the Department of Labor of the State of Illinois shall supersede the Department's June determination and apply to any and all public works construction undertaken by the College. The definition of any terms appearing in this resolution which are also used in aforesaid Act shall be the same as in said Act.

BE IT FURTHER RESOLVED that nothing herein contained shall be construed to apply to the prevailing hourly rate of wages in the locality for employment other than public works construction as defined in the ACT; and

BE IT FURTHER RESOLVED that the Secretary to the Board of Trustees be and is hereby directed to file a certified copy of this Resolution with the Secretary of State and the Department of Labor of the State of Illinois;

BE IT FURTHER RESOLVED that the Notice of this determination shall be published in the Dixon Telegraph in the City of Dixon, Illinois, a newspaper of general circulation within the area;

BE IT FURTHER RESOLVED that the Secretary shall publicly post or keep available for inspection by any interested party in the main office of the Board of Trustees this determination of such prevailing rate of wages; and

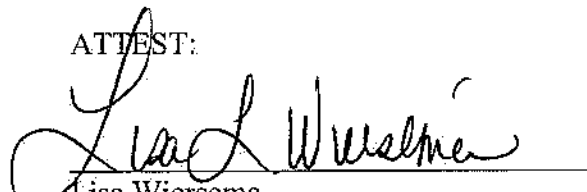
BE IT FURTHER RESOLVED that the Secretary to the Board of Trustees shall mail a copy of this determination to any employer and to any person or association of employees who have filed their names and addresses requesting copies of any determination stating the particular rates and the particular class of workmen whose wages will be affected by such rates.

Approved this 25th day of June, 2012.

Board of Trustees of Sauk Valley
Community College District #506
Lee County, Illinois


Ed Andersen, Chair

ATTEST:


Lisa Wiersema
Secretary to the Board of Trustees
District #506

Lee County Prevailing Wage for June 2012

(See explanation of column headings at bottom of wages)

| Trade Name | RG | TYP | C | Base | FRMAN | *M-F>8 | OSA | OSH | H/W | Pensn | Vac | Trng |
|----------------------|----|-------|---|--------|--------|--------|-----|-----|-------|-------|-------|-------|
| ===== | == | === | = | ===== | ===== | ===== | === | === | ===== | ===== | ===== | ===== |
| ASBESTOS ABT-GEN | | BLD | | 29.400 | 30.400 | 1.5 | 1.5 | 2.0 | 8.040 | 12.02 | 0.000 | 0.800 |
| ASBESTOS ABT-MEC | | BLD | | 31.540 | 0.000 | 1.5 | 1.5 | 2.0 | 9.670 | 9.610 | 0.000 | 0.520 |
| BOILERMAKER | | BLD | | 35.010 | 38.010 | 2.0 | 2.0 | 2.0 | 7.070 | 13.83 | 0.000 | 0.300 |
| BRICK MASON | | BLD | | 35.710 | 38.460 | 1.5 | 1.5 | 2.0 | 7.400 | 11.73 | 0.000 | 0.570 |
| CARPENTER | | BLD | | 32.040 | 35.560 | 1.5 | 1.5 | 2.0 | 8.520 | 12.87 | 0.000 | 0.600 |
| CARPENTER | | HWY | | 32.440 | 34.190 | 1.5 | 1.5 | 2.0 | 9.250 | 11.99 | 0.000 | 0.490 |
| CEMENT MASON | | ALL | | 32.520 | 35.270 | 1.5 | 1.5 | 2.0 | 7.400 | 13.78 | 0.000 | 0.250 |
| CERAMIC TILE FNISHER | | BLD | | 32.240 | 0.000 | 1.5 | 1.5 | 2.0 | 7.400 | 4.840 | 0.000 | 0.500 |
| COMMUNICATION TECH | | BLD | | 36.000 | 39.600 | 1.5 | 1.5 | 2.0 | 9.740 | 11.20 | 0.000 | 0.720 |
| ELECTRIC PWR EQMT OP | | ALL | | 35.400 | 48.110 | 1.5 | 1.5 | 2.0 | 5.000 | 10.97 | 0.000 | 0.270 |
| ELECTRIC PWR GRNDMAN | | ALL | | 27.380 | 48.110 | 1.5 | 1.5 | 2.0 | 5.000 | 8.490 | 0.000 | 0.210 |
| ELECTRIC PWR LINEMAN | | ALL | | 42.390 | 48.110 | 1.5 | 1.5 | 2.0 | 5.000 | 13.14 | 0.000 | 0.320 |
| ELECTRIC PWR TRK DRV | | ALL | | 28.350 | 48.110 | 1.5 | 1.5 | 2.0 | 5.000 | 8.790 | 0.000 | 0.220 |
| ELECTRICIAN | | BLD | | 40.000 | 44.000 | 1.5 | 1.5 | 2.0 | 9.740 | 15.83 | 0.000 | 0.800 |
| ELEVATOR CONSTRUCTOR | | BLD | | 44.940 | 50.560 | 2.0 | 2.0 | 2.0 | 11.03 | 11.96 | 2.760 | 0.000 |
| GLAZIER | | BLD | | 30.770 | 32.770 | 1.5 | 1.5 | 2.0 | 9.700 | 7.700 | 0.000 | 1.250 |
| HT/FROST INSULATOR | | BLD | | 43.800 | 46.300 | 1.5 | 1.5 | 2.0 | 10.82 | 11.86 | 0.000 | 0.720 |
| IRON WORKER | N | ALL | | 35.000 | 36.750 | 2.0 | 2.0 | 2.0 | 8.000 | 19.59 | 0.000 | 0.950 |
| IRON WORKER | S | ALL | | 37.000 | 38.000 | 2.0 | 2.0 | 2.0 | 8.890 | 18.20 | 0.000 | 0.700 |
| LABORER | | BLD | | 29.400 | 30.400 | 1.5 | 1.5 | 2.0 | 8.040 | 12.02 | 0.000 | 0.800 |
| LABORER | | HWY | | 30.100 | 30.850 | 1.5 | 1.5 | 2.0 | 8.040 | 12.02 | 0.000 | 0.800 |
| LABORER, SKILLED | | HWY | | 32.250 | 33.000 | 1.5 | 1.5 | 2.0 | 8.040 | 12.02 | 0.000 | 0.800 |
| LATHER | | BLD | | 32.040 | 35.560 | 1.5 | 1.5 | 2.0 | 8.520 | 12.87 | 0.000 | 0.600 |
| MACHINIST | | BLD | | 43.160 | 45.160 | 1.5 | 1.5 | 2.0 | 7.980 | 8.950 | 0.000 | 0.000 |
| MARBLE FINISHERS | | BLD | | 32.240 | 0.000 | 1.5 | 1.5 | 2.0 | 7.400 | 4.840 | 0.000 | 0.500 |
| MARBLE MASON | | BLD | | 35.090 | 35.340 | 1.5 | 1.5 | 2.0 | 7.400 | 6.980 | 0.000 | 0.540 |
| MATERIAL TESTER I | | ALL | | 21.550 | 0.000 | 1.5 | 1.5 | 2.0 | 7.460 | 4.840 | 0.000 | 0.170 |
| MATERIALS TESTER II | | ALL | | 26.550 | 0.000 | 1.5 | 1.5 | 2.0 | 7.460 | 4.840 | 0.000 | 0.170 |
| MILLWRIGHT | | BLD | | 34.400 | 37.840 | 1.5 | 1.5 | 2.0 | 7.100 | 11.94 | 0.000 | 0.500 |
| OPERATING ENGINEER | | BLD 1 | | 40.350 | 44.350 | 2.0 | 2.0 | 2.0 | 14.55 | 9.300 | 2.350 | 1.300 |
| OPERATING ENGINEER | | BLD 2 | | 39.650 | 44.350 | 2.0 | 2.0 | 2.0 | 14.55 | 9.300 | 2.350 | 1.300 |
| OPERATING ENGINEER | | BLD 3 | | 37.200 | 44.350 | 2.0 | 2.0 | 2.0 | 14.55 | 9.300 | 2.350 | 1.300 |
| OPERATING ENGINEER | | BLD 4 | | 35.200 | 44.350 | 2.0 | 2.0 | 2.0 | 14.55 | 9.300 | 2.350 | 1.300 |
| OPERATING ENGINEER | | BLD 5 | | 44.100 | 44.350 | 2.0 | 2.0 | 2.0 | 14.55 | 9.300 | 2.350 | 1.300 |
| OPERATING ENGINEER | | BLD 6 | | 43.350 | 44.350 | 2.0 | 2.0 | 2.0 | 14.55 | 9.300 | 2.350 | 1.300 |
| OPERATING ENGINEER | | BLD 7 | | 40.350 | 44.350 | 2.0 | 2.0 | 2.0 | 14.55 | 9.300 | 2.350 | 1.300 |
| OPERATING ENGINEER | | HWY 1 | | 40.200 | 44.200 | 1.5 | 1.5 | 2.0 | 14.55 | 9.300 | 2.350 | 1.300 |
| OPERATING ENGINEER | | HWY 2 | | 39.650 | 44.200 | 1.5 | 1.5 | 2.0 | 14.55 | 9.300 | 2.350 | 1.300 |
| OPERATING ENGINEER | | HWY 3 | | 38.350 | 44.200 | 1.5 | 1.5 | 2.0 | 14.55 | 9.300 | 2.350 | 1.300 |
| OPERATING ENGINEER | | HWY 4 | | 36.900 | 44.200 | 1.5 | 1.5 | 2.0 | 14.55 | 9.300 | 2.350 | 1.300 |
| OPERATING ENGINEER | | HWY 5 | | 35.450 | 44.200 | 1.5 | 1.5 | 2.0 | 14.55 | 9.300 | 2.350 | 1.300 |
| OPERATING ENGINEER | | HWY 6 | | 43.200 | 44.200 | 1.5 | 1.5 | 2.0 | 14.55 | 9.300 | 2.350 | 1.300 |
| OPERATING ENGINEER | | HWY 7 | | 41.200 | 44.200 | 1.5 | 1.5 | 2.0 | 14.55 | 9.300 | 2.350 | 1.300 |
| PAINTER | | ALL | | 35.000 | 37.000 | 1.5 | 1.5 | 1.5 | 8.950 | 8.200 | 0.000 | 1.250 |
| PILEDRIIVER | | BLD | | 33.040 | 36.670 | 1.5 | 1.5 | 2.0 | 8.520 | 12.87 | 0.000 | 0.600 |
| PILEDRIIVER | | HWY | | 32.440 | 34.190 | 1.5 | 1.5 | 2.0 | 9.250 | 11.99 | 0.000 | 0.490 |
| PIPEFITTER | | ALL | | 36.250 | 39.880 | 1.5 | 1.5 | 2.0 | 5.400 | 11.85 | 0.000 | 1.000 |
| PLASTERER | | BLD | | 33.360 | 36.700 | 2.0 | 2.0 | 2.0 | 7.650 | 11.05 | 0.000 | 0.250 |

| | | | | | | | | | | |
|-------------------|---------|--------|--------|-----|-----|-----|-------|-------|-------|-------|
| PLUMBER | ALL | 36.250 | 39.880 | 1.5 | 1.5 | 2.0 | 5.400 | 11.85 | 0.000 | 1.000 |
| ROOFER | BLD | 37.650 | 40.650 | 1.5 | 1.5 | 2.0 | 8.380 | 6.820 | 0.000 | 0.430 |
| SHEETMETAL WORKER | BLD | 35.450 | 37.380 | 1.5 | 1.5 | 2.0 | 5.250 | 14.77 | 0.520 | 0.290 |
| SPRINKLER FITTER | BLD | 36.140 | 38.890 | 1.5 | 1.5 | 2.0 | 8.100 | 8.200 | 0.000 | 0.350 |
| STONE MASON | BLD | 35.710 | 38.460 | 1.5 | 1.5 | 2.0 | 7.400 | 11.73 | 0.000 | 0.570 |
| TERRAZZO FINISHER | BLD | 32.240 | 0.000 | 1.5 | 1.5 | 2.0 | 7.400 | 4.840 | 0.000 | 0.500 |
| TERRAZZO MASON | BLD | 35.090 | 35.340 | 1.5 | 1.5 | 2.0 | 7.400 | 6.980 | 0.000 | 0.540 |
| TILE LAYER | BLD | 32.040 | 35.560 | 1.5 | 1.5 | 2.0 | 8.520 | 12.87 | 0.000 | 0.600 |
| TILE MASON | BLD | 35.090 | 35.340 | 1.5 | 1.5 | 2.0 | 7.400 | 6.980 | 0.000 | 0.540 |
| TRUCK DRIVER | O&C 1 | 24.280 | 0.000 | 1.5 | 1.5 | 2.0 | 10.05 | 4.610 | 0.000 | 0.250 |
| TRUCK DRIVER | O&C 2 | 24.630 | 0.000 | 1.5 | 1.5 | 2.0 | 10.05 | 4.610 | 0.000 | 0.250 |
| TRUCK DRIVER | O&C 3 | 24.790 | 0.000 | 1.5 | 1.5 | 2.0 | 10.05 | 4.610 | 0.000 | 0.250 |
| TRUCK DRIVER | O&C 4 | 25.020 | 0.000 | 1.5 | 1.5 | 2.0 | 10.05 | 4.610 | 0.000 | 0.250 |
| TRUCK DRIVER | O&C 5 | 25.670 | 0.000 | 1.5 | 1.5 | 2.0 | 10.05 | 4.610 | 0.000 | 0.250 |
| TRUCK DRIVER | E ALL 1 | 32.550 | 33.100 | 1.5 | 1.5 | 2.0 | 6.500 | 4.350 | 0.000 | 0.000 |
| TRUCK DRIVER | E ALL 2 | 32.700 | 33.100 | 1.5 | 1.5 | 2.0 | 6.500 | 4.350 | 0.000 | 0.000 |
| TRUCK DRIVER | E ALL 3 | 32.900 | 33.100 | 1.5 | 1.5 | 2.0 | 6.500 | 4.350 | 0.000 | 0.000 |
| TRUCK DRIVER | E ALL 4 | 33.100 | 33.100 | 1.5 | 1.5 | 2.0 | 6.500 | 4.350 | 0.000 | 0.000 |
| TRUCK DRIVER | W ALL 1 | 30.350 | 0.000 | 1.5 | 1.5 | 2.0 | 10.05 | 4.610 | 0.000 | 0.250 |
| TRUCK DRIVER | W ALL 2 | 30.790 | 0.000 | 1.5 | 1.5 | 2.0 | 10.05 | 4.610 | 0.000 | 0.250 |
| TRUCK DRIVER | W ALL 3 | 30.990 | 0.000 | 1.5 | 1.5 | 2.0 | 10.05 | 4.610 | 0.000 | 0.250 |
| TRUCK DRIVER | W ALL 4 | 31.270 | 0.000 | 1.5 | 1.5 | 2.0 | 10.05 | 4.610 | 0.000 | 0.250 |
| TRUCK DRIVER | W ALL 5 | 32.090 | 0.000 | 1.5 | 1.5 | 2.0 | 10.05 | 4.610 | 0.000 | 0.250 |
| TUCKPOINTER | BLD | 35.710 | 38.460 | 1.5 | 1.5 | 2.0 | 7.400 | 11.73 | 0.000 | 0.570 |

Legend: RG (Region)

TYP (Trade Type - All, Highway, Building, Floating, Oil & Chip, Rivers)

C (Class)

Base (Base Wage Rate)

FRMAN (Foreman Rate)

M-F>8 (OT required for any hour greater than 8 worked each day, Mon through Fri.)

OSA (Overtime (OT) is required for every hour worked on Saturday)

OSH (Overtime is required for every hour worked on Sunday and Holidays)

H/W (Health & Welfare Insurance)

Pensn (Pension)

Vac (Vacation)

Trng (Training)

Explanations**LEE COUNTY**

IRONWORKERS (SOUTH) - That part of the county South of Route 30.

TRUCK DRIVERS (EAST) - That part of the county East of U.S. 251 and North of Route 30.

The following list is considered as those days for which holiday rates of wages for work performed apply: New Years Day, Memorial Day, Fourth of July, Labor Day, Thanksgiving Day, Christmas Day and Veterans Day in some classifications/counties. Generally, any of these holidays which fall on a Sunday is celebrated on the following Monday. This then makes work performed on that Monday payable at the appropriate overtime rate for holiday pay. Common practice in a given local may alter certain days of celebration. If in doubt, please check with IDOL.

Oil and chip resealing (O&C) means the application of road oils and

liquid asphalt to coat an existing road surface, followed by application of aggregate chips or gravel to coated surface, and subsequent rolling of material to seal the surface.

EXPLANATION OF CLASSES

ASBESTOS - GENERAL - removal of asbestos material/mold and hazardous materials from any place in a building, including mechanical systems where those mechanical systems are to be removed. This includes the removal of asbestos materials/mold and hazardous materials from ductwork or pipes in a building when the building is to be demolished at the time or at some close future date.

ASBESTOS - MECHANICAL - removal of asbestos material from mechanical systems, such as pipes, ducts, and boilers, where the mechanical systems are to remain.

CERAMIC TILE FINISHER, MARBLE FINISHER, TERRAZZO FINISHER

Assisting, helping or supporting the tile, marble and terrazzo mechanic by performing their historic and traditional work assignments required to complete the proper installation of the work covered by said crafts. The term "Ceramic" is used for naming the classification only and is in no way a limitation of the product handled. Ceramic takes into consideration most hard tiles.

COMMUNICATIONS TECHNICIAN

Installing, manufacturing, assembling and maintaining sound and intercom, protection alarm (security), fire alarm, master antenna television, closed circuit television, low voltage control for computers and/or door monitoring, school communications systems, telephones and servicing of nurse and emergency calls, and the installation and maintenance of transmit and receive antennas, transmitters, receivers, and associated apparatus which operates in conjunction with above systems. All work associated with these system installations will be included EXCEPT the installation of protective metallic conduit in new construction projects (excluding less than ten-foot runs strictly for protection of cable) and 120 volt AC (or higher) power wiring and associated hardware.

LABORER, SKILLED - HIGHWAY

Individuals engaged in the following types of work, irrespective of the site of the work: asbestos abatement worker, handling of any materials with any foreign matter harmful to skin or clothing, track laborer, cement handlers, chloride handlers, the unloading and loading with steel workers and re-bars, concrete workers wet, tunnel helpers in free air, batch dumpers, mason tenders, kettle and tar men, tank cleaners, plastic installers, scaffold workers, motorized buggies or motorized unit used for wet concrete or handling of building materials, laborers with de-watering systems, sewer workers plus depth, rod and chainmen with technical engineers, rod and chainmen with land surveyors, rod and chainmen with surveyors, vibrator operators, cement silica, clay, fly ash, lime and plasters, handlers (bulk or bag), cofferdam workers plus depth, on concrete paving, placing, cutting and tying of reinforcing, deck hand, dredge hand, and shore laborers, bankmen on floating plant, grade checker, power

tools, front end man on chip spreaders, cession workers plus depth, gunnite nozzle men, lead man on sewer work, welders, cutters, burners and torchmen, chainsaw operators, jackhammer and drill operators, layout man and/or drainage tile layer, steel form setter - street and highway, air tamping hammermen, signal man on crane, concrete saw operator, screedman on asphalt pavers, laborers tending masons with hot material or where foreign materials are used, mortar mixer operators, multiple concrete duct - leadsman, lumen, asphalt raker, curb asphalt machine operator, ready mix scalemen (permanent, portable or temporary plant), laborers handling masterplate or similar materials, laser beam operator, concrete burning machine operator, coring machine operator, plaster tender, underpinning and shoring of buildings, pump men, manhole and catch basin, dirt and stone tamper, hose men on concrete pumps, hazardous waste worker, lead base paint abatement worker, lining of pipe, refusing machine, assisting on direct boring machine, the work of laying watermain, fire hydrants, all mechanical joints to watermain work, sewer worker, and tapping water service and forced lift station mechanical worker.

MATERIAL TESTER I: Hand coring and drilling for testing of materials; field inspection of uncured concrete and asphalt.

MATERIAL TESTER II: Field inspection of welds, structural steel, fireproofing, masonry, soil, facade, reinforcing steel, formwork, cured concrete, and concrete and asphalt batch plants; adjusting proportions of bituminous mixtures.

OPERATING ENGINEERS - BUILDING

Class 1. Asphalt Plant; Asphalt Spreader; Autograde; Backhoes with Caisson Attachment; Batch Plant; Benoto (requires Two Engineers); Boiler and Throttle Valve; Caisson Rigs; Central Redi-Mix Plant; Combination Back Hoe Front End-loader Machine; Compressor and Throttle Valve; Concrete Breaker (Truck Mounted); Concrete Conveyor; Concrete Paver (over 27E cu. ft.); Concrete Paver (27 cu. ft. and under); Concrete Placer; Concrete Pump (Truck Mounted); Concrete Conveyor (Truck Mounted); Concrete Tower; Cranes, All; GCI and similar types (required two operators only); Cranes, Hammerhead; Creter Crane; Crusher, Stone, etc.; Derricks, All; Derricks, Traveling; Formless Curb and Gutter Machine; Grader, Elevating; Grouting Machines; Highlift Shovels or Front Endloader 2-1/4 yd. and over; Hoists, Elevators, outside type rack and pinion and similar machines; Hoists, one, two and three Drum; Hoists, Two Tugger One Floor; Hydraulic Backhoes; Hydraulic Boom Trucks; Locomotives, All; Lubrication Technician; Manipulators; Motor Patrol; Pile Drivers and Skid Rig; Post Hole Digger; Pre-Stress Machine; Pump Cretes Dual Ram; Pump Cretes: Squeeze Cretes - Screw Type Pumps, Gypsum Bulker and Pump; Raised and Blind Hole Drill; Rock Drill (self-propelled); Rock Drill - Truck Mounted; Roto Mill Grinder; Scoops - Tractor Drawn; Slipform Paver; Scrapers Prime Movers; Straddle Buggies; Tie Back Machine; Tractor with Boom and Side Boom; Trenching Machines.

Class 2. Bobcat (over 3/4 cu. yd.); Boilers; Brick Forklift; Broom, All Power Propelled; Bulldozers; Concrete Mixer (Two Bag and Over); Conveyor, Portable; Forklift Trucks; Highlift Shovels or Front Endloaders under 2-1/4 yd.; Hoists, Automatic; Hoists, Sewer Dragging Machine; Hoists, Tugger Single Drum; Rollers, All; Steam Generators;

Tractors, All; Tractor Drawn Vibratory Roller; Winch Trucks with "A" Frame.

Class 3. Air Compressor; Asphalt Spreader; Combination - Small Equipment Operator; Generators; Heaters, Mechanical; Hoists, Inside Elevators - (Rheostat Manual Controlled); Hydraulic Power Units (Pile Driving and Extracting); Pumps, Over 3" (1 to 3 not to exceed total of 300 ft.); Pumps, Well Points; Welding Machines (2 through 5); Winches, 4 Small Electric Drill Winches; Bobcat (up to and including 3/4 cu. yd.).

Class 4. Elevator push button with automatic doors; Hoists, Inside; Oilers; Brick Forklift.

Class 5. Assistant Craft Foreman

Class 6. Mechanics

Class 7. Gradall

OPERATING ENGINEERS - HIGHWAY CONSTRUCTION

Class 1. Asphalt Plant; Asphalt Heater and Planer Combination; Asphalt Heater Scarfire; Asphalt Silo Tender; Asphalt Spreader; Autograder; ABG Paver; Backhoes with Caisson Attachment; Ballast Regulator; Belt Loader; Caisson Rigs; Car Dumper; Central Redi-Mix Plant; Backhoe w/shear attachments; Combination Backhoe Front Endloader Machine, (1 cu. yd. Backhoe Bucket or over or with attachments); Concrete Breaker (Truck Mounted); Concrete Conveyor; Concrete Paver over 27E cu. ft.; Concrete Placer; Concrete Tube Float; Cranes, all attachments; Cranes, Tower of all types; Creter Crane; Crusher, Stone, etc.; Derricks, All; Derrick Boats; Derricks, Traveling; Directional Boring Machine over 12"; Dredges; Formless Curb and Gutter Machine; Grader, Elevating; Grader, Motor Grader, Motor Patrol, Auto Patrol, Form Grader, Pull Grader, Subgrader; Guard Rail Post Driver Mounted; Hoists, One, Two and Three Drum; Hydraulic Backhoes; Lubrication Technician; Manipulators; Pile Drivers and Skid Rig; Pre-Stress Machine; Pump Cretes Dual Ram; Rock Drill - Crawler or Skid Rig; Rock Drill - Truck Mounted; Rock/Track Tamper; Roto Mill Grinder; Slip-Form Paver; Soil Test Drill Rig (Truck Mounted); Straddle Buggies; GCI Crane; Hydraulic Telescoping Form (Tunnel); Tie Back Machine; Tractor Drawn Belt Loader; Tractor Drawn Belt Loader with attached pusher; Tractor with Boom; Tractaire with Attachments; Traffic Barrier Conveyor Machine; Raised or Blind Hole Drills; Trenching Machine (over 12"); Truck Mounted Concrete Pump with Boom; Truck Mounted Concrete Conveyor; Underground Boring and/or Mining Machines; Wheel Excavator; Widener (APSCO).

Class 2. Batch Plant; Bituminous Mixer; Boiler and Throttle Valve; Bulldozers; Car Loader Trailing Conveyors; Combination Backhoe Front Endloader Machine (less than 1 cu. yd. Backhoe Bucket or over or with attachments); Compressor and Throttle Valve; Compressor, Common Receiver (3); Concrete Breaker or Hydro Hammer; Concrete Grinding Machine; Concrete Mixer or Paver 7S Series to and including 27 cu. ft.; Concrete Spreader; Concrete Curing Machine, Burlap Machine, Belting Machine and Sealing Machine; Conveyor Muck Cars (Haglund or

Similar Type); Drills, all; Finishing Machine - Concrete; Highlift Shovels or Front Endloader; Hoist - Sewer Dragging Machine; Hydraulic Boom Trucks (All Attachments); Hydro Blaster; All Locomotives, Dinky; Off-Road Hauling Units (including articulating) / 2 ton capacity or more; Non-Self Loading Ejection Dump; Pump Cretes: Squeeze Cretes - Screw Type Pumps, Gypsum Bulker and Pump; Roller, Asphalt; Rotary Snow Plows; Rototiller, Seaman, etc., self-propelled; Scoops - Tractor Drawn; Self-Propelled Compactor; Spreader - Chip - Stone, etc.; Scraper; Scraper - Prime Mover in Tandem (Regardless of Size); Tank Car Heater; Tractors, Push, Pulling Sheeps Foot, Disc, Compactor, etc.; Tug Boats.

Class 3. Boilers; Brooms, All Power Propelled; Cement Supply Tender; Compressor, Common Receiver (2); Concrete Mixer (Two Bag and Over); Conveyor, Portable; Farm-Type Tractors Used for Mowing, Seeding, etc.; Fireman on Boilers; Forklift Trucks; Grouting Machine; Hoists, Automatic; Hoists, All Elevators; Hoists, Tugger Single Drum; Jeep Diggers; Low Boys; Pipe Jacking Machines; Post-Hole Digger; Power Saw, Concrete Power Driven; Pug Mills; Rollers, other than asphalt; Seed and Straw Blower; Steam Generators; Stump Machine; Winch Trucks with "A" Frame; Work Boats; Tamper - Form - Motor Driven.

Class 4. Air Compressor - Small and Large; Asphalt Spreader, Backend Man; Bobcat (Skid Steer) all; Brick Forklift; Combination - Small Equipment Operator; Directional Boring Machine up to 12"; Generators; Heaters, Mechanical; Hydraulic Power Unit (Pile Driving, Extracting, or Drilling); Hydro-Blaster; Light Plants, All (1 through 5); Pumps, over 3" (1 to 3 not to exceed a total of 300 ft.); Pumps, Well Points; Tractaire; Trencher 12" and under; Welding Machines (2 through 5); Winches, 4 Small Electric Drill Winches.

Class 5. Oilers and Directional Boring Machine Locator.

Class 6. Field Mechanics and Field Welders

Class 7. Gradall and machines of like nature.

TRUCK DRIVER - BUILDING, HEAVY AND HIGHWAY CONSTRUCTION - WEST

Class 1. Drivers on 2 axle trucks hauling less than 9 ton. Air compressor and welding machines and brooms, including those pulled by separate units, truck driver helpers, warehouse employees, mechanic helpers, greasers and tiremen, pickup trucks when hauling materials, tools, or workers to and from and on-the-job site, and fork lifts up to 6,000 lb. capacity.

Class 2. Two or three axle trucks hauling more than 9 ton but hauling less than 16 ton. A-frame winch trucks, hydrolift trucks, vactor trucks or similar equipment when used for transportation purposes. Fork lifts over 6,000 lb. capacity, winch trucks, four axle combination units, and ticket writers.

Class 3. Two, three or four axle trucks hauling 16 ton or more. Drivers on water pulls, articulated dump trucks, mechanics and working forepersons, and dispatchers. Five axle or more combination units.

Class 4. Low Boy and Oil Distributors.

Class 5. Drivers who require special protective clothing while employed on hazardous waste work.

TRUCK DRIVER - BUILDING, HEAVY AND HIGHWAY CONSTRUCTION - EAST

Class 1. Two or three Axle Trucks. A-frame Truck when used for transportation purposes; Air Compressors and Welding Machines, including those pulled by cars, pick-up trucks and tractors; Ambulances; Batch Gate Lockers; Batch Hopperman; Car and Truck Washers; Carry-alls; Fork Lifts and Hoisters; Helpers; Mechanics Helpers and Greasers; Oil Distributors 2-man operation; Pavement Breakers; Pole Trailer, up to 40 feet; Power Mower Tractors; Self-propelled Chip Spreader; Skipman; Slurry Trucks, 2-man operation; Slurry Truck Conveyor Operation, 2 or 3 man; Teamsters; Unskilled dumpman; and Truck Drivers hauling warning lights, barricades, and portable toilets on the job site.

Class 2. Four axle trucks; Dump Crets and Adgetors under 7 yards; Dumpsters, Track Trucks, Euclids, Hug Bottom Dump Turnapulls or Turnatrailers when pulling other than self-loading equipment or similar equipment under 16 cubic yards; Mixer Trucks under 7 yards; Ready-mix Plant Hopper Operator, and Winch Trucks, 2 Axles.

Class 3. Five axle trucks; Dump Crets and Adgetors 7 yards and over; Dumpsters, Track Trucks, Euclids, Hug Bottom Dump Turnatrailers or turnapulls when pulling other than self-loading equipment or similar equipment over 16 cubic yards; Explosives and/or Fission Material Trucks; Mixer Trucks 7 yards or over; Mobile Cranes while in transit; Oil Distributors, 1-man operation; Pole Trailer, over 40 feet; Pole and Expandable Trailers hauling material over 50 feet long; Slurry trucks, 1-man operation; Winch trucks, 3 axles or more; Mechanic--Truck Welder and Truck Painter.

Class 4. Six axle trucks; Dual-purpose vehicles, such as mounted crane trucks with hoist and accessories; Foreman; Master Mechanic; Self-loading equipment like P.B. and trucks with scoops on the front.

TRUCK DRIVER - OIL AND CHIP RESEALING ONLY.

This shall encompass laborers, workers and mechanics who drive contractor or subcontractor owned, leased, or hired pickup, dump, service, or oil distributor trucks. The work includes transporting materials and equipment (including but not limited to, oils, aggregate supplies, parts, machinery and tools) to or from the job site; distributing oil or liquid asphalt and aggregate; stock piling material when in connection with the actual oil and chip contract. The Truck Driver (Oil & Chip Resealing) wage classification does not include supplier delivered materials.

Other Classifications of Work:

For definitions of classifications not otherwise set out, the Department generally has on file such definitions which are

available. If a task to be performed is not subject to one of the classifications of pay set out, the Department will upon being contacted state which neighboring county has such a classification and provide such rate, such rate being deemed to exist by reference in this document. If no neighboring county rate applies to the task, the Department shall undertake a special determination, such special determination being then deemed to have existed under this determination. If a project requires these, or any classification not listed, please contact IDOL at 217-782-1710 for wage rates or clarifications.

LANDSCAPING

Landscaping work falls under the existing classifications for laborer, operating engineer and truck driver. The work performed by landscape plantsman and landscape laborer is covered by the existing classification of laborer. The work performed by landscape operators (regardless of equipment used or its size) is covered by the classifications of operating engineer. The work performed by landscape truck drivers (regardless of size of truck driven) is covered by the classifications of truck driver.

**Sauk Valley Community College
June 25, 2012**

Agenda Item 2.8

Topic: **ICCB RAMP 2014 Project**

Presented By: **Dr. George Mihel and Paula Meyer**

Presentation:

Each year Community Colleges must submit requests to the Illinois Community College Board (ICCB) for funding of capital projects. This includes resubmitting requests for previously approved projects that are not complete. Sauk Valley Community College currently has one approved project that is waiting for state funding. The project will remodel the natural science laboratories at the college. This project has been waiting for funding several years and is currently number 5 out of 31 on the fiscal year 2013 Capital Budget Recommendation list.

This year the ICCB recommended the previously submitted project budget be increased by 2.7% to cover inflation. Based on the architect's master plan, the square footage of the remodel is 9,500 square feet. The total cost of the project is \$3,914,500 with \$978,600 in matching local funds.

The science labs are currently opened walled rooms divided only by cabinetry from each other and the hallway. This design results in safety and operational problems. This project will enclose the classrooms to provide security and eliminate sound and disruptions. In addition, the cabinetry and lab stations are very dilapidated and will be replaced.

Recommendation:

The administration recommends the Board approve the attached Resource Allocation and Management Plan for Fiscal Year 2014. This includes a 2.7% budget increase as stipulated by the ICCB.

Resource Allocation and Management Plan
Fiscal Year 2014

Submitted June 2012

Sauk Valley Community College
Illinois Community College District No. 506
173 Illinois Route 2
Dixon, IL 61021

(815) 835-6299
dittoj@svcc.edu

Sauk Valley Community College
RAMP 2014
Submitted June 2012

Project 1
Remodel Natural Science Laboratories

Fiscal Year 2014 RAMP
Community College Capital Requests

Community College Contact for Further Information

Occasionally it is necessary to contact the individual(s) responsible for completing the Capital RAMP tables in order to reconcile discrepancies or to obtain further information to clarify requested projects(s). Please list the person responsible for the Capital RAMP submission in the space provided below who should be contacted for follow up inquiries. The individual below will be the person ICCB or IBHE contacts to answer questions concerning the Capital RAMP requests.

Community College District #506 Sauk Valley Community College

Budget Year Request 2014

Capital RAMP Contact Person John Ditto, Director of Buildings and Grounds

Telephone Number (815) 835-6299

TABLE 1
FISCAL YEAR 2014 CAPITAL PROJECT REQUEST

DISTRICT/COLLEGE:

506 Sauk Valley Community College

PROJECT NAME AND/OR DESCRIPTION Remodel Natural Science Laboratories

Check one:

NEW FACILITIES CONSTRUCTION/ACQUISITION

REMODELING/REHABILITATION PROJECT

OTHER

(Complete Table 2)

(Complete Table 2)

(Complete Table 2 or provide additional information per instructions)

DISTRICT PRIORITY NUMBER 1 OUT OF 1

Check one:

NEW REQUEST

REQUESTED PREVIOUSLY

Dollars rounded to the nearest hundred (for example and per instructions enter \$1,456,789 as \$1,456.8)

| PROJECT CATEGORIES* | PRIOR YEARS FUNDING* | | | CURRENT REQUEST FY | | | BEYOND CURRENT YEAR* | | | TOTAL PROJECT COST | | |
|-----------------------------|----------------------|-------------|------------|--------------------|-------------|------------|----------------------|-------------|------------|--------------------|-------------|------------|
| | STATE FUNDS | LOCAL FUNDS | TOTAL COST | STATE FUNDS | LOCAL FUNDS | TOTAL COST | STATE FUNDS | LOCAL FUNDS | TOTAL COST | STATE FUNDS | LOCAL FUNDS | TOTAL COST |
| LAND | | | | | | | | | | | | |
| EQUIPMENT | | | | | | | | | | | | |
| UTILITIES | | | | | | | | | | | | |
| REMODELING & REHABILITATION | | | | | | | | | | | | |
| SITE IMPROVEMENTS | | | | | | | | | | | | |
| PLANNING | | | | | | | | | | | | |
| TOTAL | | | | 2,935.9 | 978.6 | 3,914.5 | | | | 2,935.9 | 978.6 | 3,914.5 |

* Describe prior year funding and/or future year funding in the scope statement section using the requested format. State funds should equal 75% of total and local funds should equal 25% of total. ICCB will adjust for credits.

| | | | | |
|--------------------------------------|----------|---------|-----------------------------|----------|
| TOTAL PROJECT REQUEST (CURRENT YEAR) | \$ | 3,914.5 | MATCHING CONTRIBUTION \$ | |
| TOTAL COMPLETED PROJECT COST | \$ | 3,914.5 | LOCAL FINANCING SOURCE | |
| DESIRED PROJECT START DATE | 5/1/2013 | | AVAILABLE FUND BALANCE | \$ 528.6 |
| ESTIMATED COMPLETION DATE | 5/1/2014 | | ICCB CONSTRUCTION CREDIT \$ | |
| ESTIMATED OCCUPANCY DATE | 5/1/2014 | | DEBT ISSUE (if any) | \$ |
| ESTIMATED ANNUAL OPERATING COST | \$ | | DATE OF APPROVAL: | |
| | | | OTHER (PHS) | \$ 350.0 |
| | | | TOTAL | \$ 978.6 |

COMPLETE ONE SHEET FOR EACH PROJECT REQUESTED

TABLE 2

***Gross Square Feet:**

COMPLETE THE APPLICABLE SECTION--ONE SHEET FOR EACH PROJECT REQUESTED

| | |
|------------------|---|
| District/College | Sauk Valley Community College |
| Location | 173 Illinois Route 2, Dixon, Illinois 61021 |
| Project Name | Remodel Natural Science Laboratories |

| Space Type | NASF | Multplier Factor | GSF | \$/GSF | Cost |
|---|---------------------|----------------------|-----------------------|---------------------|-----------|
| <u>Input field:</u> | <u>Input field:</u> | <u>Output field:</u> | <u>Formula field:</u> | <u>Input field:</u> | |
| Renovate classroom, lab and offices | 9500 | 1 | 9500 | 271.08 | \$2,576.3 |
| | | 1 | | | |
| | | 1 | | | |
| | | 1 | | | |
| | | 1 | | | |
| | | 1 | | | |
| | | | | | |
| | | | | | |
| | | | | | |
| | | | | | |
| | | | | | |
| | | | | | |
| 1. Base Total | 9500 | | 9500 | | \$2,576.3 |
| 2. Added Costs (sum of added cost components identified separately below) | | | | | \$154.5 |
| LEED design cost up to 8% of line 1 | | | | | \$124.5 |
| Green Building Design/LEED Certification Level Silver (Silver, Gold , Platinum) | | | | | |
| Other added costs: | | | | | |
| | | | | | |
| 3. Base Cost | 9500 | | 9500 | | \$2,729.8 |

Source of Cost Estimate: _____
Date of Cost Estimate: _____

Fiscal Year 2014 Ramp
Community College Capital Projects

Programmatic Justification Narrative

District/College: Sauk Valley Community College District 506
Project Name: Remodel Natural Science Laboratories

Purpose

The third floor science laboratories at Sauk Valley Community College are over 40 years old and open-walled. This causes especially serious pedagogical problems in the third floor Science labs. One wall of each lab is windows, the two walls perpendicular to that are composed of tall banks of storage cabinets with openings at each end and near the ceiling, and there is no fourth wall. Students must walk through one room to reach another. This design results in a collection of safety and operational problems: open-walled rooms filled with expensive equipment and potentially dangerous supplies are left unsecured; a separate room that could be used as a general classroom is instead reserved for lab prep and storage functions that require security; students clearly hear noise from the labs next door; fumes or fire that might originate in one room would travel quickly to the others; and classes are disrupted by people who pass through one lab on their way to another. Lab stations and cabinetry in the rooms are worn, delaminating, and some are broken. The student stations are arranged so that half of the students sit with their backs to the teacher's station. The lab stations do not meet current ADA requirements which require staff to find makeshift alternatives to accommodate handicapped students. In addition, the adjacent faculty offices are separated from each other only by half partitions, so teachers are unable to meet privately with students or work in their offices without noise distractions.

An architectural firm hired by the Board of Trustees has completed an update to the master plan at SVCC. A review of the laboratory area is included in this update, a preliminary budget has been established, and new layout drawings are attached to this justification. The proposed project will solve the problems listed above as follows: new walls that enclose the labs will provide soundproofing and security that eliminates the distraction of external foot traffic; the cabinetry and lab stations will be replaced, the teaching stations will be set up to utilize computer-aided presentation methods.

Instructional Objectives

The project will improve the instructional effectiveness of all Science classes by reducing noise, replacing worn-out lab stations, and enhancing instructional technology.

Comparison to Existing Facilities

The current labs are noisy and open, cannot be locked, and have cabinetry that is delaminating and over 40 years old. The faculty offices lack privacy and security. This project will correct all of those problems.

Facilities Currently Available

Current utilization:

The third floor labs are used by students in Chemistry, Biology, Nursing, and health-related fields. Historically, students enrollment in Chemistry and Biology account for approximately 10.9% of the College's total credit hours. The chemistry and biology labs are currently tied up almost continuously for either class instruction or lab preparations.

Inadequacy of current facilities:

The current facilities are inadequate for both safety and pedagogy. In an emergency, the open walls would encourage the spread of fire or fumes. Equipment and supplies in the labs cannot be locked up adequately. The openness of the labs lets in disruptive noise both from people passing through the rooms and from instruction taking place in neighboring classes. The surfaces of the lab stations have delaminated to the point of becoming rough and jagged. Some of the cabinetry is broken and unusable. The orientation of the student stations causes half of the students to have their backs to the teacher. The lab stations do not meet current ADA requirements which require staff to find makeshift alternatives to accommodate handicapped students. The faculty offices are open to each other and are, therefore, noisy and insecure.

Driving forces:

The driving forces for the project are a need to reduce noise and disruption in the labs, improve security and safety, replace worn fixtures, and improve instructional technology.

Master Plan

The project is a part of the updated College's facilities master plan that was submitted to the ICCB in August 2010.

Attachments

Attached is a map of renovations planned for the third floor natural science laboratories.

Fiscal Year 2014 Ramp
Community College Capital Projects

Scope of Work Narrative

District/College: Sauk Valley Community College District 506
Project Name: Remodel Natural Science Laboratories

Exact Location: 173 IL Route 2, Dixon, IL 61021

Nature of Work to be Performed

The open science laboratories on the third floor will be enclosed through installation of walls on three sides. Full walls will be installed in adjacent faculty offices. A new layout is being proposed through an architectural review for the 2010 update to the Campus Master Plan. Cabinetry and lab stations will be replaced. Plumbing, gas, and power lines leading to those stations, along with fume hoods, will be repaired and/or replaced. Heating, ventilating and air conditioning systems and lighting will be adjusted for the different needs of enclosed rooms. Computer-aided instruction projection systems will be installed.

General Building Conditions

The current floor plan of the renovation area includes four labs, two classrooms, two storage/preparation rooms, and six offices. All of the labs are open-walled, with tall cabinetry as room dividers, and have bare concrete floors. The offices have partial half-wall dividers and are open to each other. The ventilation and heating and cooling systems are designed for open rooms. The area covers 9,500 GSF.

Site Analysis

The renovation will occur inside the existing facility (Building 1) and will affect only the southwest side of the third floor laboratory and classroom area.

BOARD OF TRUSTEES MATCHING FUNDS COMMITMENT


I hereby certify that the Board of Trustees of Sauk Valley Community College, District # 506, meeting in their regular session on June 25, 2012, with a quorum present, officially authorized the submission of the attached Fiscal Year 2014 RAMP Community College Capital Project Request.

- I certify that the board reviewed and approved the attached programmatic justification, scope of work, and related forms for the project identified below.
- I further certify that board has made a commitment to either use available assets and/or credits, or to make local funds available for the project requested as indicated below, should the project be approved.

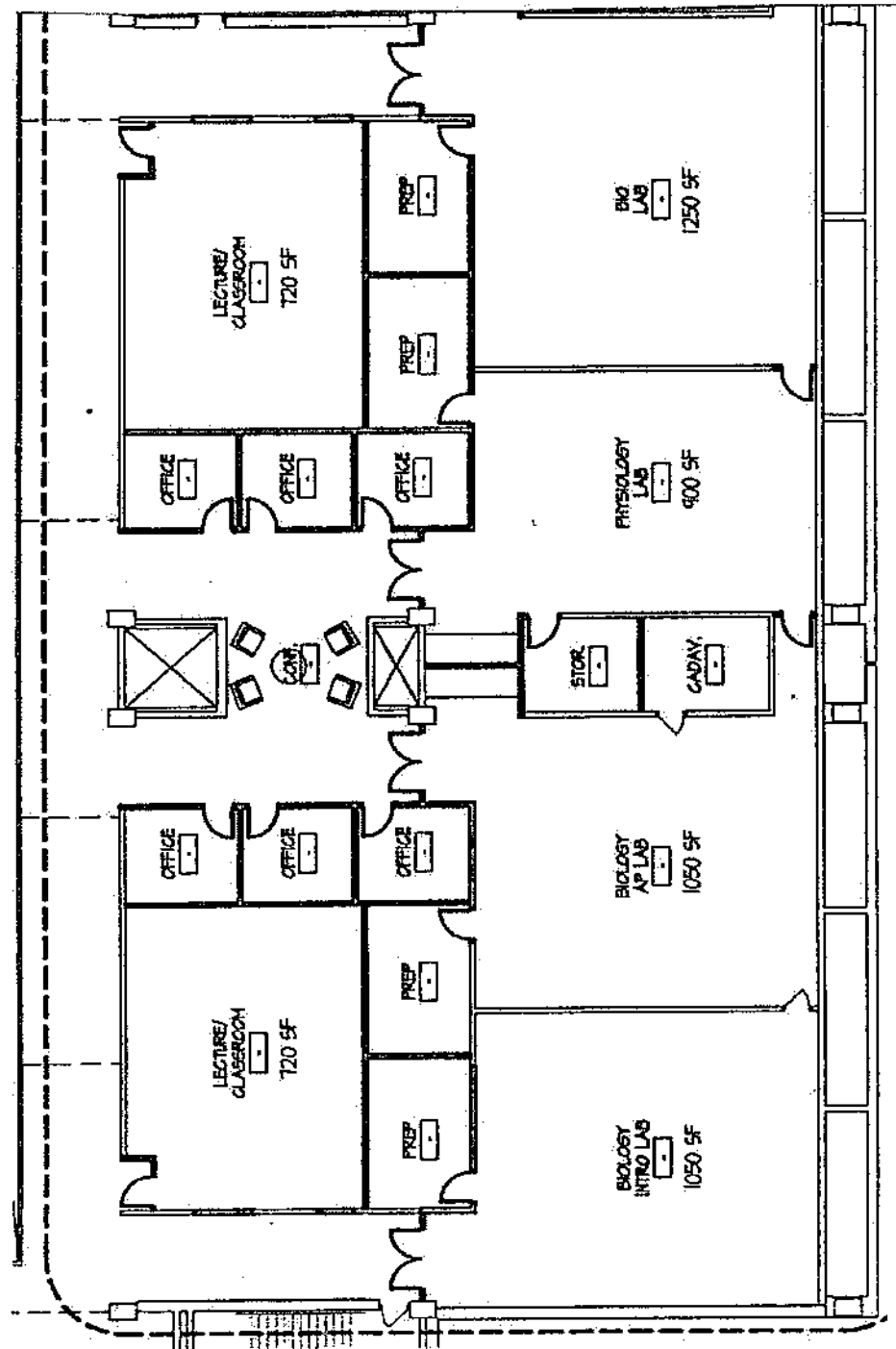
PROJECT NAME:

Proposed Source(s) of Local Funding

| | (List the Dollar Amount) |
|--|--------------------------|
| 1. Available Local Fund Balances | \$ <u>628,600</u> |
| 2. Protection, Health, and Safety Tax Levy | \$ <u>350,000</u> |
| 3. Protection, Health, and Safety Bond Proceeds | \$ _____ |
| 4. Other Debt Issue | \$ _____ |
| 5. State Certified Construction Credits (remaining from 1987) | \$ _____ |
| 6. Other (Please specify) _____ | \$ _____ |
| TOTAL LOCAL MATCH | \$ <u>978,600</u> |

Signed 
Chairperson of the Board of Trustees

Signed 
Chief Executive Officer of the College District



103.02 Trustee Compensation and Expenses

Members of the Board shall serve without compensation but shall be reimbursed for their reasonable expenses incurred in connection with their service as members.

3/23/81
10/24/83
3/27/89
3/26/90
2/25/02

104.01 Adopting, Rescinding and Revising Board Policies

The following procedures shall be observed by the Board to adopt, rescind or revise Board policies and regulations:

A. All policies of the Board shall be deleted, changed or revised by a majority vote of the full membership of the Board at the next regular or special meeting of the Board following the introduction of the matter in a regular meeting of the Board.

B. A rule or resolution of a permanent nature may be adopted by a majority vote of the full membership of the Board, if notice of the proposed action is given at a previous meeting in accordance with the above.

C. Following the election and seating of new members of the Board, the Board, recognizing that it is a continuing body, assumes all policies, regulations and rules of the preceding Board and continues them in effect until such policies, regulations and rules are amended and rescinded.

D. Unless otherwise stated to the contrary, all policies and regulations adopted by the Sauk Valley Community College Board of Trustees shall be in full force and effect at the time of their adoption by the Board.

E. The foregoing notwithstanding, the Board of Trustees may make changes in policy by resolution approved by roll call vote at any meeting, without prior written notice or reading, under the following circumstances; (i) in the event a title of a position at the College is changed, references in policies to that position can be changed to use the new title, so long as such change does not have any substantive affect on the policy, (ii) in the event of change of policy number systems, the numbers may be changed, so long as no substantive change is made in the policy or its potential applicability, (iii) in the event of change of statutory citation, the statutory citation may be changed, provided no substantive change in law or policy is reflected by the change in citation.

3/23/81

3/28/87

5/21/90

3/22/99

Sauk Valley Community College
June 25, 2012

Action Item 4.1

Topic: 2012-2013 Tentative Budget- First Reading

Presented By: Dr. George Mihel and Paula Meyer

Presentation:

Attached is the 2012-2013 Tentative Budget for Board consideration and first reading. This budget will be on public display in the Business Office, the President's Office and the Learning Resource Center for 30 days. The public hearing and final action will take place at the July Board meeting.

Recommendation:

The administration recommends the Board of Trustees approve the first reading of the FY2013 Tentative Budget.

SAUK VALLEY COMMUNITY COLLEGE
FY2013 BUDGET NARRATIVE

SVCC has nine different funds.

- **Education (Fund 1)** - academic programs, student services, technology and administration.
- **Operations & Maintenance (Fund 2)** - building maintenance, custodial, grounds and utilities.
- **Restricted Purposes (Fund 6)** - student financial aid and restricted grants.
- **Audit (Fund 11)** - audit costs.
- **Liability, Protection & Settlement (Fund 12)** - liability insurance, workers compensation insurance, unemployment insurance, FICA, Medicare and risk management.
- **Working Cash (Fund 7)** - investment income and temporary cash flow.
- **Bond & Interest (Fund 4)** - bond repayment and bond interest payment.
- **Operations & Maintenance Restricted (Fund 3)** - building renovations and funding bonds.
- **Auxiliary (Fund 5)** - student activities, athletics, bookstore and the medical self-insured fund.

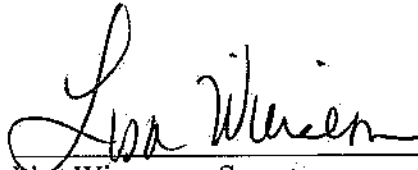
The revenue sources and uses of the nine funds are listed on the following pages. Also included are the assumptions used to determine the FY2013 budget amounts if significantly different from the prior year.

NOTICE OF PUBLIC HEARING

NOTICE IS HEREBY GIVEN BY the Board of Trustees of Sauk Valley Community College District No. 506, in the Counties of Whiteside, Lee, Ogle, Henry, Bureau and Carroll, State of Illinois, that a tentative Budget for said College district for the fiscal year beginning July 1, 2012, will be on file and conveniently available for public inspection at the Office of the President, the Business Office, and the Learning Resource Center of the College, located at 173 Illinois Route 2, Dixon, Illinois.

NOTICE IS FURTHER HEREBY GIVEN that a public hearing on this budget will be held at 7:00 p.m. on the 30th day of July, 2011, at Sauk Valley Community College, 173 Illinois Route 2, Dixon, Illinois in this Community College District No. 506.

Dated this 25th day of June, 2012.



Lisa Wiersema, Secretary
Board of Trustees, Community College
District No. 506 in the Counties of Whiteside,
Lee, Ogle, Henry, Bureau, and Carroll,
State of Illinois

Sauk Valley Community College
June 25, 2012

Action Item 4.2

Topic: **Bid Award - Classroom Technology Equipment Purchase**

Presented By: **Dr. George Mihel and Alan Pfeifer**

Presentation:

In an effort to provide the most up-to-date teaching technology in the recently renovated classrooms, the College requested bids to purchase classroom technology equipment as part of the remodeling projects.

The College sent bid documents to two companies and advertised in the *Dixon Telegraph* and the *Sterling Daily Gazette*. Three bids were received.

| Equipment | AVI Systems | Inter Pacific | CDW-G |
|--|---------------------|---------------------|--------------------|
| Projector & mount | \$12,512.90 | \$18,400.00 | Did not meet bid |
| Document presenter | \$4,833.30 | \$7,475.00 | specifications for |
| Interactive pen display | \$18,833.30 | \$21,838.50 | installation or |
| Media presentation controller | \$45,805.50 | \$21,827.00 | joining rooms |
| Speaker | \$616.00 | \$562.50 | 1C01 and 1C03 |
| Blu-ray/DVD player | \$2,111.10 | \$1,265.00 | |
| Audio amplifier combining Rooms 1C01 & 1C03 | \$0.00 | \$2,173.50 | |
| Total for Equipment | \$84,712.10 | \$73,541.50 | |
| Cabling | \$18,147.20 | \$18,750.00 | |
| Installation | \$46,880.00 | \$15,000.00 | |
| Total | \$149,739.30 | \$107,291.50 | |

The bid specifications were reviewed by Chris Shelley, Dean of Information Services and Academic Vice President Pfeifer. The equipment meets the required specifications and will be installed in 10 classrooms located in the Technology, Radiology and Science Lab areas. The company has agreed to install one room, this installation will be evaluated and approved prior to proceeding with the remaining rooms. Funding bonds will be used for this purchase.

Recommendation:

The administration recommends the Board of Trustees approve the purchase of the Classroom Technology Equipment from Inter Pacific, Inc. in the amount of \$107,291.50.

Sauk Valley Community College
June 25, 2012

Action Item 4.3

Topic: **Bid Award - Fire Science Clothing Purchase**

Presented By: **Dr. George Mihel and Alan Pfeifer**

Presentation:

In preparation for the Fire Science classes beginning this fall, the College requested bids to purchase protective jackets and trousers for students and faculty in this program. This clothing provides protection to the upper and lower body (excluding head, hands, and feet) against adverse environmental effects during structural firefighting. All materials and construction meet or exceed NFPA and OSHA standards for structural fire fighters protective clothing.

The College sent bid documents to two companies and advertised in the *Dixon Telegraph* and the *Sterling Daily Gazette*. One bid was received.

| Vendor | Model | Bid |
|--|---|-----------------|
| Illinois Fire Store, Inc. Amboy, IL | Globe Classic Turnout Gear for students | \$ 11,250.00 |
| | Cairns RSX Turnout Gear for Faculty | <u>5,680.00</u> |
| | | \$16,930.00 |

The bid specifications were reviewed by Jeff Bryant, adjunct faculty of the Fire Science program and Academic Vice President Pfeifer and determined that it meets the required specifications. Funding bonds will be used for this purchase.

Recommendation:

The administration recommends the Board of Trustees approve the purchase of Fire Science Clothing from the Illinois Fire Store in the amount of \$16,930.

Sauk Valley Community College
June 25, 2012

Action Item 6.1

Topic: Academic Appeal Decision

Presented By: Dr. George Mihel

Presentation:

Sauk Valley Community College has an appeal process for students through which students can contest academic action. The appeal process has four steps: Instructor; Academic Appeal Hearing Board; President, and Board of Trustees. The appeal has been denied at the first three levels and is being taken to the Board and is the final level.

All related materials follow this page.

Recommendation:

The Board of Trustees will render a decision of the academic appeal following deliberation.