

SAUK VALLEY COMMUNITY COLLEGE

Career Programs

A Look at Career Degrees & Certificates





Sauk Valley Community College is dedicated to helping you reach your educational and career goals. SVCC offers almost 90 transfer and career programs to consider. The purpose of this guide is to provide a glance at career degrees and certificates offered at Sauk. These programs are for individuals wishing to acquire training and education that will lead directly to employment and not transfer. These programs can take as little as one semester, but all programs provide a pathway to 2-year associate degrees. This guide will help you learn about SVCC career programs of study, the job outlook for these programs, and what resources are available.

Let's get started!



Career Technical Programs at SVCC

- **Associate in Applied Science**

The Associate in Applied Science (A.A.S.) degree is designed as a career program for students seeking specialized education which prepares them to enter or to advance in employment. These programs range from 60 to 69.5 semester hours and signify completion of a two-year program of study. Career programs are not designed to transfer to four-year colleges or universities. A.A.S. degrees are developed by the SVCC faculty with the assistance of local citizens serving on occupational workforce councils, and with the approval of personnel from state agencies.

- **Certificate Programs**

Certificate programs consist of a series of prescribed courses (in a specialized field) that prepare the student for entry-level occupations. These programs range from 4 to 43 semester hours and are designed to be completed in less than two years. Certificate programs require fewer general education requirements and are designed to develop the technical competence of the student.

Many certificate programs contain the core courses of the Associate in Applied Science degree program in the same field, thereby allowing the student to continue with additional study and earn an A.A.S. degree.

Use the program information on the following pages as you consider what you want to study at SVCC.

Program highlights include:

- Program name, description, hours needed to complete and sample courses.
- O*NET Job Titles associated with that degree. *Source: onetonline.org*

*O*NET Online provides descriptions of occupational requirements and desired attributes for perspective job seekers.*

- Bureau of Labor Statistics Wage and Outlook projections.

Source: onetonline.org

Projected outlook for IL reflects 2008-2018 data. Projected outlook for USA reflects 2010-2020 data.





Computer Information Systems at SVCC

The three degree programs are designed to provide a graduate with the entry-level job skills necessary in the computer information systems field. Majors study the theory, design, development, and application of computer technology to computer information systems, and develop in-depth knowledge on the operation and structure of major business software packages. Five certificate programs are also available to allow students to choose a specialization.

- **Associate in Applied Science:**

Computer Software Technology (B35), Networking Specialist (075), Windows Server Administrator (077)

Hours Needed: 60-62

Major Course Examples:

Database Software, Website Creation & Management, Cybersecurity Analysis, Security+ Certification.

- **Certificates:**

Business Software Specialist I (B32)

Hours Needed: 16

Major Course Examples:

Word Processing Software, Spreadsheet Software, Cloud Productivity.

Business Software Specialist II (B36)

Hours Needed: 22

Major Course Examples:

Database Software, Desktop Publishing Software, Business Presentation Graphics.

- **Certificates:**

Networking (B31)

Hours Needed: 27

Major Course Examples:

Network Certification, Switching/Routing, Wireless Essentials, etc.

PC Technician (B29)

Hours Needed: 18

Major Course Examples:

A+ Certification, Beginning Linux, Managing Modern Windows Device, etc.

Server Support Specialist (B28)

Hours Needed: 30

Major Course Examples:

Intro to Virtualization, Intro to Cloud Computing, Intro to Servers, etc.



Work & Employment

<i>O*NET Job Titles</i>	<i>US Median Wage</i>	<i>Northwest IL Median Wage</i>	<i>US Projected Outlook</i>	<i>IL Projected Outlook</i>
Computer Operators	\$39,600	\$39,600	-17%	-14%
Computer System Analyst	\$82,700	\$71,900	25%	26%
Computer Support	\$47,600	\$42,900	20%	19%
Web Developer	\$63,500	\$29,000	20%	20%



Accounting

This degree program prepares the student for entry-level positions or to be a junior member of the accounting staff of a private business, industrial enterprise, public accounting firm, or governmental agency. Emphasis is on the financial record keeping aspects of accounting and the preparation and analysis of reports as a basis for managerial decisions. The certificate program prepares students for entry-level positions in private business and industry.

Associate in Applied Science (021)

Hours Needed: 62

Major Course Examples:
Financial Accounting,
Managerial Accounting,
Introduction to Business,
Occupational Internship, etc.

Certificate (B90)

Hours Needed: 28

Major Course Examples:
Financial Accounting,
Managerial Accounting,
Cost Accounting, etc.

Work & Employment

O*NET Job Titles	US Median Wage	Northwest		US Projected Outlook	IL Projected Outlook
		IL Median Wage			
Auditor	\$65,900	\$54,000		13%	12%
Bill & Account Collector	\$33,700	\$32,400		15%	13%
Payroll Clerk	\$39,700	\$37,400		13%	12%
Bookkeeper & Auditing Clerks	\$36,400	\$30,500		11%	9%

Art • Digital Media Arts

The purpose of the digital media arts curriculum is two-fold. First, those who earn a certificate have the minimum requirements needed to secure employment as graphic designers in firms that engage in specialized design services, advertising services, printing services, and publishing. Second, those who earn a certificate may also pursue further education in a number of fields and apply those skills and expertise to in-house advertising and graphic design needs for their employers, particularly those who operate as small businesses. The media arts certificates specialize in film, video, and interactive media. It will also strengthen the marketability of students who complete other fields of study because it will enhance visual communication skills for use in advertising and marketing functions.

Entry Level Certificate (B14)

Hours Needed: 18

Major Course Examples:
Photography, Drawing,
Motion Graphics &
Animation

Advanced Level Certificate (B24)

Hours Needed: 30

Major Course Examples:
Graphic Design, Video
Production, Interactive Media

Work & Employment

O*NET Job Titles	US Median Wage	Northwest		US Projected Outlook	IL Projected Outlook
		IL Median Wage			
Desktop Publisher	\$38,200	\$42,900		-6%	-21%
Graphic Designer	\$45,900	\$31,600		7%	6%

Commercial Drivers License

This program is designed to prepare individuals to obtain employment as commercial drivers. The classroom portion of the program emphasizes information required to pass the written driving exam, such as the rules of the road, log book requirements, and load regulations. Upon successful completion of the classroom portion, students will prepare for the driving test as they gain driving experience, learn how to hitch trailers to tractors, and understand safety techniques and practices. Students will be accompanied by an instructor and will use one of the trucks in which they learned to drive when they take the CDL exam. Every community in North America is served by the trucking industry. Men and women can earn above average incomes within a year or two of successfully completing the program and earning their CDL.

Students must be at least 18 years old to obtain their CDL and meet all required testing.



Certificate (T10)

Hours Needed: 10

Major Course Examples:
Commercial Drivers License
Regulation, Commercial
Vehicle Operation

Work & Employment

O*NET Job Titles	US Median Wage	Northwest		US Projected Outlook	IL Projected Outlook
		IL Median Wage			
Heavy & Tractor-Trailer Truck	\$39,500	\$40,200		11%	13%
Light Truck/Delivery	\$29,600	\$27,800		4%	8%

Criminal Justice • Law Enforcement

This program prepares students for careers in law enforcement agencies such as municipal police departments, county sheriffs' departments, state police and private security concerns. The program includes general education courses and provides an emphasis on criminal justice courses and supportive social science courses.



To qualify for employment in the area of law enforcement, students must be a minimum of 21 years of age. A maximum age requirement can also vary among law enforcement agencies.

Associate in Applied Science (081)

Hours Needed: 61

Major Course Examples: Criminal Investigation, Criminal Evidence & Procedure, Police & Patrol Operations, Intro to Psychology, etc.

Certificate: Corrections (C50)

Hours Needed: 18

Major Course Examples: Intro to Criminal Justice, Substance Abuse, Abnormal Psychology, etc.

Work & Employment

O*NET Job Titles	US Median Wage	Northwest		US Projected Outlook	IL Projected Outlook
		IL Median Wage			
Police Patrol Officer	\$56,800	\$52,100		6%	0%
Sheriff/Deputy	\$55,300	\$70,700		6%	0%

Paraprofessional Educator

The Paraprofessional Educator degree will assist individuals in securing the education and credentials needed to obtain employment as a paraprofessional. The program incorporates general education and professional requirements, as well as related electives, and prepares individuals to obtain employment as an instructional assistant in pre-K through 12th grade. The employment of elementary and secondary paraprofessionals is dependent upon publicly-funded resources. Most employment opportunities in this occupation will result from fairly high attrition or turnover. Many employment opportunities include part-time positions but full-time employment is available on a limited basis. These positions usually merit entry-level pay.

Associate in Applied Science (041)

Hours Needed: 61-63

Major Course Examples: Computer Education for Teachers, Child Development Psychology, and Children's Literature

Work & Employment

O*NET Job Titles	US Median Wage	Northwest		US Projected Outlook	IL Projected Outlook
		IL Median Wage			
Teacher Assistant	\$26,260	\$23,333		8%	5%

Early Childhood Education

The Early Childhood Education program provides the academic background and practical experience for people interested in careers in education, including infant, preschool, and school-age child care in early childhood centers, family child care homes, parent education, and early childhood program supervision. Coursework focuses on theory, research, and program practice pertaining to children prenatal to early school age. Students have the opportunity to observe and assess children's behaviors and work directly with children in a supervised setting. This program provides a comprehensive course of study, including physical, cognitive, social and emotional development of young children, curriculum development, literature and language arts, creative activities for teaching art, music, math and science, behavior guidance, health and nutrition, and one supervised practicum experience. This program aligns to the AAS/Gateways ECE Level 4 certification.



Credential Program Description

Students enrolled in Early Childhood programs at SVCC will be eligible to complete credentials through the Gateways to Opportunities state professional development system for ECE levels 2, 3 and 4. Benefits of this credentialing process increase a student's employability through ACCESS Illinois and makes students eligible for scholarship opportunities with wage differentials.

Criminal History Check Required

Associate in Applied Science (042)

Hours Needed: 60-61

Major Course Examples:
Parent-Teacher-Child-Community Relations, Early Childhood Practicum, Child Care & Development, etc.

Certificates:

Early Childhood Education:

Educator (F16)

Hours Needed: 29

Major Course Examples:
Curriculum Development, Observation & Assessment, Rhythms and Games for Children

Educator Assistant (F15)

Hours Needed: 17

Major Course Examples:
Child Health Nutrition & Safety, Parent-Teacher-Child-Community Relations

Early Childhood Education:

Foundations of infant Toddler Care (F14)

Hours Needed: 4-

Major Course Examples:
Foundations of Infant and Toddler Care (need to have completed AASI Gateways ECE Levels 2, 3 or 4).

Work & Employment

O*NET Job Titles	US Median Wage	Northwest		US Projected Outlook	IL Projected Outlook
		IL Median Wage			
Childcare Worker	\$19,700	\$20,300		14%	7%
Preschool Teacher	\$28,100	\$30,600		17%	4%

Agriculture

Agriculture Production Technology – Associate in Applied Science (014)

Hours Needed: 60

The Agriculture Production Technology AAS program prepares students to enter employment in production agriculture through farming and farm management. Technical education is provided in crop and livestock production, mechanics skills, and farm business management.

Major Course Examples:

Soil Science, Plant Science, Animal Science

Agriculture Business – Associate in Applied Science (016)

Hours Needed: 60

The agriculture business program is a two-year program designed to prepare individuals for jobs in the field of agricultural supply, distribution, and service. Students prepare for a career in selling and retailing agricultural supplies, providing services to producers. Students will receive training in precision agriculture as well as operating and managing an agricultural business.

Major Course Examples:

Intro to Ag Business Management, Intro to Ag Economics, Intro to Ag Marketing

Agricultural Mechanics – Associate in Applied Science (018)

Hours Needed: 60

This program will provide an introduction to the various fields of agricultural mechanics. The program will train students within the Agriculture CTE area. Specifically, students will work within the Agriculture, Food, & Natural Resources Career Cluster in jobs such as precision agriculture specialists, service technicians, equipment operators, equipment parts, and equipment sales & service.

Major Course Examples:

Intro to Ag Mechanics, Industrial and Ag Wiring, Welding

- **Certificate:**

Ag Production Technology Certificate (A14)

Hours Needed: 29

Major Course Examples:

Drones, Ag Issues & Perceptions



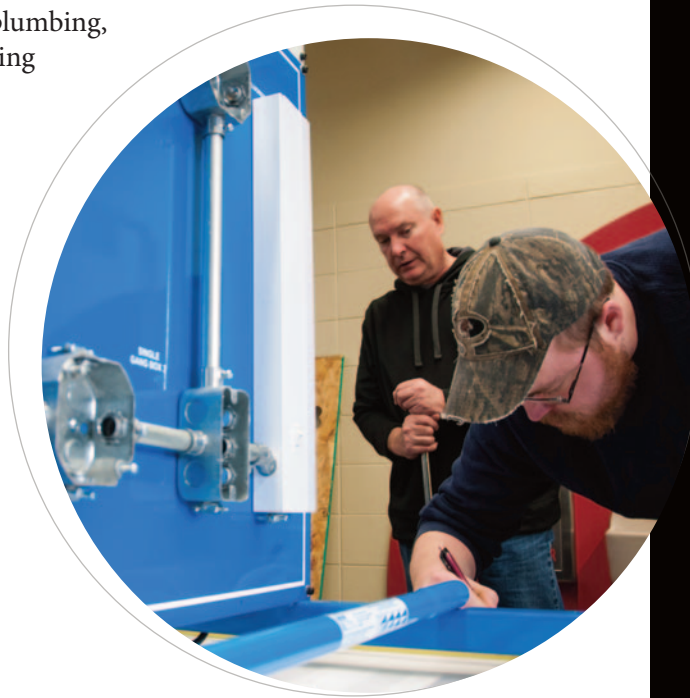
Work & Employment

<i>O*NET Job Titles</i>	<i>US Median Wage</i>	<i>Northwest IL Median Wage</i>	<i>US Projected Outlook</i>	<i>IL Projected Outlook</i>
Farm & Ranch Managers	\$64,170	\$67,930	2%	1%
Ag & Food Science Technicians	\$36,480	\$39,100	5%	7%
Buyers & Purchasing Agents, Farm Products	\$56,270	\$54,100	5%	5%



Industrial Maintenance Electrician

This program is designed to prepare individuals for work with maintenance staffs of local industries, specifically in the area of electrical control mechanisms. In our society, industries of one type or another produce almost all of our nation's goods. These industries rely on the machines, including robots that industrial mechanics maintain and repair. Maintenance workers in this field also care for buildings and work on plumbing, electrical, and air conditioning and heating systems.



Industrial Maintenance Electrician (H94)

Hours Needed: 24

Major Course Examples:
 Industrial & Agricultural Wiring, Intro to CAD & Mechanical Systems, OSHA Standards, Electrical Controls, Industrial Troubleshooting, etc.

Work & Employment

<i>O*NET Job Titles</i>	<i>US Median Wage</i>	<i>Northwest IL Median Wage</i>	<i>US Projected Outlook</i>	<i>IL Projected Outlook</i>
Home Appliance Repairers	\$35,400	\$34,600	1%	3%
Sheet Metal Worker	\$45,100	\$62,900	16%	9%

Management

This degree program has been designed for persons seeking employment or advancement in middle management positions in business and industry. The program offers a student the opportunity to combine classroom instruction with on-the-job work experience. The program is designed to prepare a student for positions in human resources, sales, advertising, merchandising, and production.

The management certificate program is designed with a core of specialized business courses that allow a student to become familiar with the various aspects of business and industrial management. The supervisory management certificate program is designed with a core of specialized business courses that allow a student to become a front-line supervisor. These certificates are well designed for those individuals wanting to enter management or for those in management with a need to upgrade their skills.



Associate in Applied Science (022)

Hours Needed: 61

Major Course Examples:
Managerial Accounting,
Business Mathematics,
Supervision Techniques,
Human Relations, etc.

Certificates:

Management (B93)

Hours Needed: 19

Major Course Examples:
Intro to Business,
Principles of Management,
Human Relations, etc.

Supervisory Management (B97)

Hours Needed: 15

Major Course Examples:
Intro to Business,
Supervision Techniques,
Principles of
Management, etc.

Entrepreneurship & Small Business Management (B89)

Hours Needed: 25-26

Major Course Examples:
Entrepreneurship
Principles

Work & Employment

O*NET Job Titles	US Median Wage	Northwest		US Projected Outlook	IL Projected Outlook
		IL Median Wage			
First-Line Supervisor-Laborers	\$46,700	\$51,400		9%	12%
First-Line Supervisor-Office	\$50,800	\$43,800		12%	9%
First-Line Supervisor-Retail	\$37,900	\$31,600		4%	5%

Marketing

This degree program prepares students for entry-level positions such as sales representative or manager trainee. Additional training may lead to other positions such as store manager and human resources or operations manager in retail, wholesale, insurance, finance, banking or real estate firms. The certificate is designed specifically for individuals who are already employed in the marketing field or are seeking employment in the industry. The emphasis of this program is on sales and retailing for a sales-related position in the marketing industry. The skills needed for marketing jobs vary by product line, market, and level of responsibility. Buyers purchase the best available merchandise at the lowest possible prices and expedite the delivery of goods from the producer to the consumer. Salespersons represent their products to potential buyers.

Wholesale buyers purchase goods directly from manufacturers or from other wholesale firms for resale to retail firms or to commercial establishments and other institutions. Retail buyers purchase goods from wholesale firms or directly from manufacturers for resale to the public.



Associate in Applied Science (020)

Hours Needed: 61

Major Course Examples:

Intro to Business,
Fundamentals of Personal
Selling, Managerial
Accounting,
Advertising, etc.

Certificate:

Marketing (B92)

Hours Needed: 18

Major Course Examples:

Marketing, E-Commerce &
Social Media Marketing,
Advertising, etc.

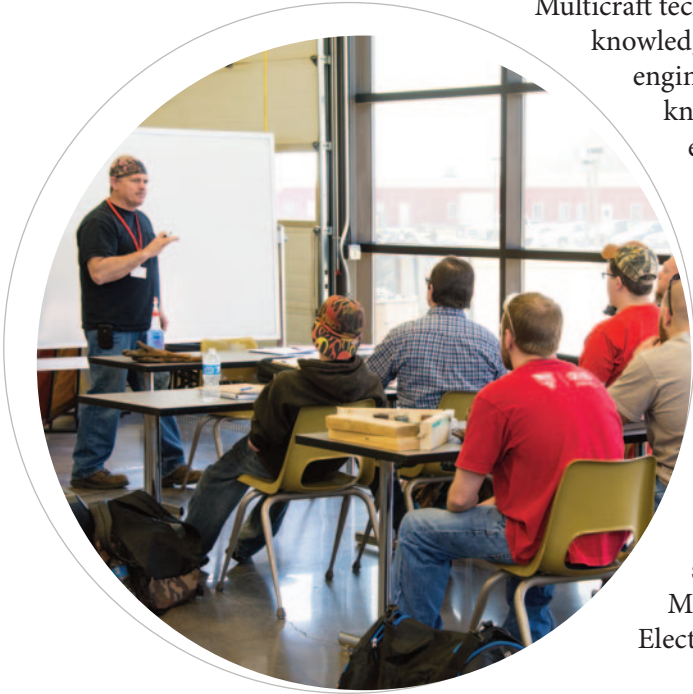
Work & Employment

<i>O*NET Job Titles</i>	<i>US Median Wage</i>	<i>Northwest IL Median Wage</i>	<i>US Projected Outlook</i>	<i>IL Projected Outlook</i>
Retail Sales	\$21,400	\$22,500	10%	8%
Sales Rep	\$51,700	\$38,300	16%	13%
Wholesale/Retail Buyers	\$52,300	\$50,900	7%	10%

Multicraft Technology

Graduates of the multicraft technology degree program are prepared to enter the work force as engineering technicians, field service engineers, plant maintenance technicians and application engineers or to move into supervisory positions. Graduates may continue their education at many colleges and universities and earn an advanced degree.

Multicraft technicians combine knowledge of mechanical engineering technology with knowledge of electrical and electronic circuits to maintain, design, develop, test, and manufacture electronic and computer-controlled mechanical systems, such as robotic assembly machines. This degree allows the student to choose electives towards a student-selected specialization in HVAC, Machining/CNC, Electrical, Electronics, and Welding.



Associate in Applied Science (061)

Hours Needed: 63

Major Course Examples: Programmable Controllers, Fundamentals of Electricity, Electrical Controls, Mechanical Systems, Fluid Power, OSHA Standards, Welding Fundamentals, CAD, Wiring Fundamentals, etc.

Certificates:

Machining & CNC (H73)

Hours Needed: 24

Major Course Examples: Beginning Computer Numeric Control, Advanced Computer Numeric Control, Machining and Manufacturing Processes, etc.

Electronics: Industrial (H65)

Hours Needed: 23

Major Course Examples: Intro to DC and AC circuits, Advanced Circuits, Programmable Controllers, etc.

HVAC: Entry Level Technician (H84)

Hours Needed: 16.5

Major Course Examples: Sheet Metal Fabrication, Basic Refrigeration, E.P.A. Certification, Basic Heating, etc.

Work & Employment

O*NET Job Titles	US Median Wage	Northwest		US Projected Outlook	IL Projected Outlook
		IL Median Wage			
First-Line Supervisor-Mechanics	\$62,200	\$65,600		8%	8%
Maintenance & Repair Technician	\$36,200	\$35,000		9%	7%
Mechanical Engineer	\$53,500	\$46,800		5%	4%



Nursing

The Associate Degree in Nursing (ADN) program prepares graduates to function with the knowledge, skill and judgment of an entry-level staff nurse in a variety of health care settings. The Licensed Practical Nursing (LPN) certificate program prepares students to function in the role of the beginning practical nurse to provide bedside care in a variety of health care settings.

The Certified Nursing Assistant (CNA) certificate curriculum is conducted over an eight or sixteen-week period and consists of classroom and clinical learning activities. The program prepares a student to assist with the care of the sick and the infirm under the supervision of registered nurses.

**Check with a Health Careers advisor regarding admissions process.*

SVCC earned accreditation from ACEN “Accreditation Commission for Education with Nursing” in April 2020 for both the ADN and LPN Programs.

Associate in Applied Science-ADN (052)

Hours Needed: 64

Major Course Examples:
Intro to Nursing, Nutrition & Diet Therapy, Medical-Surgical Nursing, Nursing of Children, etc.

Certificates:

LPN (E91)

Hours Needed: 42.5

Major Course Examples:

Beside Nursing Concept & Skills I, II, III, IV, etc.

CNA (E93)

Hours Needed: 8

Major Courses:

Basic Nursing Assistant and Advanced Nursing Assistant (both required)

Work & Employment

O*NET Job Titles	US Median Wage	Northwest		US Projected Outlook	IL Projected Outlook
		IL Median Wage			
Registered Nurse	\$66,600	\$52,200		19%	11%
Home Health Aide	\$21,400	\$24,200		49%	42%
Licensed Practical Nurse	\$42,500	\$42,000		25%	20%
Nursing Assistants	\$25,100	\$22,400		21%	15%

Radiologic Technology

Radiographers perform diagnostic imaging exams, administer contrast media, and operate radiographic equipment to perform a variety of imaging procedures including diagnostic X-rays,

CT scans, magnetic resonance imaging (MRI) exams, bone densitometry, mammography, cardiovascular interventional studies and additional specialties in nuclear medicine, ultrasound, and radiation therapy. The SVCC Radiologic Technology program is accredited by the Joint Review Committee on Education in Radiologic Technology (JRCERT).



Associate in Applied Science (051)

Hours Needed: 69.5

Major Course Examples:

Medical Terminology, Special Radiographic, Radiologic Technology Clinical Experience I, II, III, etc.

Certificate:

Computed Tomography (E90)

Hours Needed: 16

Major Course Examples:

Cross Sectional Anatomy, Computed Tomography Procedures

**Check with an academic advisor regarding admissions process.*

Work & Employment

O*NET Job Titles	US Median Wage	Northwest IL Median Wage	US Projected Outlook	IL Projected Outlook
Radiologic Technologist	\$41,400	\$41,400	27%	6%

Welding

The SVCC welding program has been specifically designed to meet the needs of the local employers, specifically the manufacturers, which make up 30% of the employment in the SVCC college district.



Certificates:

Entry Level (H48)

Hours Needed: 4

Industrial MIG Welding

Advanced (H49)

Hours Needed: 16

Major Course Examples:

Industrial MIG Welding, TIG Welding, Shielded Metal Arc Welding, Robotic Welding, etc.

Robotic Welding (H47)

Hours Needed: 5-6

Major Course Examples:

MIG Welding, Robotic Welding, etc.

Work & Employment

<i>O*NET Job Titles</i>	<i>US Median Wage</i>	<i>Northwest IL Median Wage</i>	<i>US Projected Outlook</i>	<i>IL Projected Outlook</i>
Welders, Cutters, Fitters, Brazers	\$37,400	\$33,500	6%	6%
Welding, Soldering Machine Setters	\$37,400	\$33,500	20%	5%

How to Enroll

Contact Admissions & Records at 815.835.6273

COMPLETE A STUDENT INFORMATION FORM

Submit a *Student Information Form* to Admissions & Records. Forms are available at the College, and on the College website svcc.edu/apply.

LEARN ABOUT PROGRAM/ CLASS INFORMATION

SVCC offers many types of programs to assist students in reaching their goals. This includes career and transfer programs, and individual class enrollment.

SATISFY COURSE PLACEMENT REQUIREMENTS

Multiple placement options in English/language arts and mathematics are available for all students wishing to register for any English/language arts class, mathematics class, or any other college class requiring a specific ENG/ELA/MAT co-requisite or prerequisite. College staff will discuss required placement areas and options.

Examples of Placement Options:

- ACT/SAT scores
- SVCC placement test results
- Review of credit earned at the College level
- Review of high school transcript
- GED Score

SUBMIT OTHER ACADEMIC RECORDS

Students should submit their official high school transcripts, GED scores, and college/university transcripts from institutions previously attended. Students submitting college transcripts should also file a *Transcript Evaluation Request Form* in Admissions & Records or on the college website svcc.edu/admissions. Transcripts must be delivered through an authorized electronic method or in a sealed envelope.

LEARN ABOUT TUITION COSTS & PAYMENT OPTIONS

SVCC tuition is charged per credit hour based on residence. Course fees are assessed per credit hour based on the type of course.

Students are encouraged to apply for financial assistance, scholarships, and/or veterans benefits as early as possible. Contact Financial Assistance at 815.835.6339 for more information.

MEET WITH AN ACADEMIC ADVISOR

Students will need to meet with an academic advisor to discuss their career plans, placement results, and course/program requirements. Call Academic Advising at 815.835.6354 for more information.

REGISTER FOR CLASSES

Students register for classes with Admissions & Records staff. Summer/Fall registration begins in April; Spring registration begins in November.

LEARN ABOUT SOAR, SAUK E-MAIL & OTHER ON-LINE TOOLS

Go to svcc.edu/login for assistance with accessing student accounts at SVCC.

PAY TUITION & FEES

Students may pay by check, credit card, or apply for the deferred payment plan online at svcc.edu/soar. Students who have applied for financial aid should contact Financial Assistance to confirm eligibility. Students may also pay by cash, check or credit card in the Business Office. For additional information, call 815.835.6267.

ATTEND NEW STUDENT ORIENTATION

BUY BOOKS & SUPPLIES

Visit the SVCC Bookstore to buy textbooks, supplies, and other important items.

START CLASSES!

IMPORTANT NOTE: In an effort to promote student success, students without previously earned college credit must be registered prior to the start of classes. Contact Admissions & Records for specific dates/times and registration options.

Resources to Consider on Your Program of Study Search

Academic Advising

Academic Advising provides free and confidential services pertaining to academic, career, and personal goals.

You can make an appointment by calling 815.835.6354 or online at svcc.edu/appointment. Visit svcc.edu/advising for hours and service. Plan ahead as appointments fill quickly, especially during peak advising times (i.e., registration).

Admissions & Records

Visit Admissions & Records to receive help with SOAR (Sauk Online Access to Records) and registration. Ask your questions about how to apply, add/drop classes, update contact information and file for graduation. Don't forget to stop by for a quick picture and get your free student I.D. If you have questions, call 815.835.6273. Visit svcc.edu/admissions for hours and services.

Counseling Services

Sauk provides professional mental health counseling by licensed therapists who hold to the highest ethical standards of clinical counseling. Students needing mental health support for on-going or crisis circumstances can access confidential SVCC Counseling services by clicking on the “personal counseling request” button at svcc.edu/ssc or calling the confidential line at 815.835.6204. In the event of an acute crisis, licensed therapists are typically available during office hours. After hours, students experiencing a mental health emergency can contact:

- 911
- KSB ER – 403 E 1st St, Dixon
- 800.242.7642 – Sinnissippi Crisis Line
- 800.273.8255 – National Suicide Prevention Hotline
- Text 741741 – Crisis Text Line

Financial Assistance

The Financial Assistance office can assist you with the process of seeking grants, student loans, military educational benefits, work-study opportunities or scholarships. Everyone is encouraged to apply for financial aid at fafsa.ed.gov because you might be eligible for FREE grants in addition to loans. This office can be reached at 815.835.6339. Visit svcc.edu/finaid for hours and services.

Career Services

Career Services is here to help you make the school to employment connections. Whether you are looking for full-time, part-time, internships positions or want to sharpen job skills, Career Services can provide the tools that will help you with your career needs. To make an appointment, call 815.835.6294.

Services include:

- Resume & Cover Letter Writing
- Interview Techniques
- Mock Interviews
- Job Applications Essentials
- Job Postings
- Internship Opportunities

Cross-Cultural Services

The cross-cultural coordinator provides assistance to minority students and families throughout the SVCC district in reaching educational and career goals. Some students have a clear idea of what their concerns are before seeking help; many others simply feel that some things are not going as well as they had hoped. Either way, the cross-cultural coordinator is here to help with:

- Interpreting services
- Connection with all Sauk's on-campus resources
- Connection with community resources
- On-campus club ALAS (Association of Latin American Students)
- FUSE Program (Families United for a Strong Education), and
- An open and welcoming environment

Individuals interested in more information should contact the Student Activities/Cross-Cultural Coordinator, 815.835.6432. Bilingual services are available (English/Spanish).

Disability Support Services

The Disability Support Services provides coordination of services for students with disabilities in their educational and career pursuits while attending SVCC. We engage in an interactive process with the student to determine appropriate and reasonable accommodations that effectively meet the student's needs. The Program Director acts as a liaison with faculty, staff and referral agencies to support the student's academic goals. In order to receive accommodations, students must meet with the Program Director each semester.

Students requesting accommodations for documented disabilities are encouraged to contact the DSS early in their enrollment planning. Eligibility and registration for accommodations is independent from registration for classes. For further information contact DSS at 815.835.6220 (RM 1F25) or visit svcc.edu/dss.

Learning Commons

The Learning Commons in RM 3L01 offers tutoring, library, and writing services to help students meet their academic goals. Visit svcc.edu/learning-commons for resources, contact information, and hours of service.

First Year Experience

First Year Experience (FYE 101) is a one-credit hour course designed to facilitate the self-development of the student and introduce students to the expectations of the college community.

FYE 101 is a Sauk graduation requirement and is required of degree-seeking students their first semester.

**For a complete guide of programs,
courses and course requirements, visit
catalog.svcc.edu**



173 IL Route 2 • Dixon, IL 61021
815.288.5511 • svcc.edu

Sauk Valley Community College is dedicated to teaching and scholarship while engaging the community in lifelong learning, public service, and economic development.