

## COURSE DELIVERY OPTIONS

SVCC is dedicated to our students' education as well as health and safety. To ensure both needs are met, the college has developed a variety of modes of instruction. These formats were created to offer a variety of learning environments for the comfort and safety of our students.

As always, tutoring, technical support, and student services will be available to all Skyhawks, free of charge.

### LIVE STREAMING COURSES -

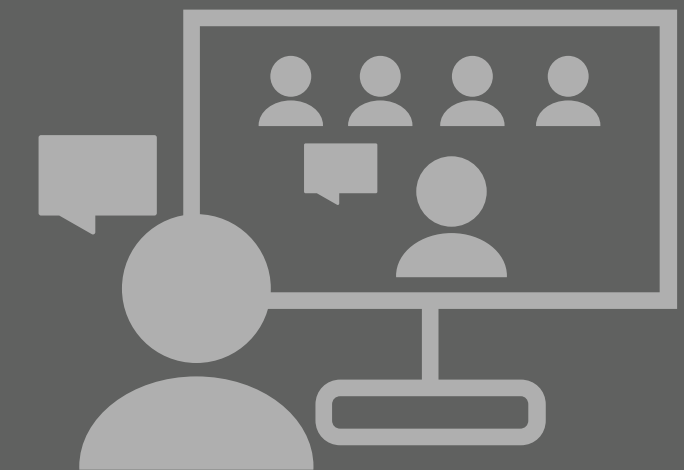
Classes meet off campus during regularly scheduled class times through a virtual meeting platform such as Google Hangouts. Shown as SY on your schedule.

### LIVE STREAM BLENDED COURSES -

Classes meet off campus during regularly scheduled class times through a virtual meeting platform such as Google Hangouts and meet on campus to complete any mandatory course work that cannot be completed virtually (i.e. labs/studio/clinical/field experience or work). Shown as SY or HY on your schedule and with LB for on campus labs.

### TRADITIONAL, FACE TO FACE -

Classes meet on campus. If deemed necessary, the academic continuity plan may be implemented, and classes will transition to a Live Stream or Live Stream Blended format. These courses are limited to career technical courses such as welding or nursing. Shown as an alphabetic letter on your schedule.



### ONLINE -

Classes that are fully online with no on campus or virtual class meetings. Some online courses may require in-person or recorded proctored tests. Shown as OL on your schedule.

## CLASSES START AUGUST 17

New students, please contact Admissions & Records at 815.835.6273 to get started.

Returning students can use Student Planning and Registration after logging in at [soar.svcc.edu](https://soar.svcc.edu).

If you are already registered and need assistance with understanding your schedule or making changes, contact Admissions & Records at 815.835.6273 or make an appointment with your assigned Academic Advisor at [svcc.edu/appointment](https://svcc.edu/appointment) or 815.835.6354.